

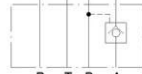
疊加式液控單向閥

Modular Pilot Operated Check Valves



閥類型符號 SYMBOL

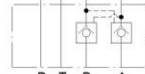
MPCV - ※



MPCV-02.03A



MPCV-02.03B



MPCV-02.03W

規格說明 SPECIFICATION :

型式 MODEL	最高使用壓力 MAX. OPERATING PRESSURE kgf/cm ²	開啓壓力 CRACKING PRESSURE kgf/cm ²	最大流量 MAX. FLOW l/min	重量 WEIGHT kg
MPCV-02-A/B	250	05 : 0.35 50 : 3.5	60	1.1
MPCV-02-W				1.2
MPCV-03-A/B			120	2.6
MPCV-03-W	2.7			

型號說明 HOW TO ORDER :

MPCV - 02 - W - 05

開啓壓力 CRACKING PRESSURE
05 : 0.35 50 : 3.5

口徑編號 SERIES NUMBER
A : A PORT B : B PORT
W : A,B PORT

閥規格 VALVE SIZE
02 : 1 / 4" 03 : 3 / 8"

系列編號 SERIES NUMBER

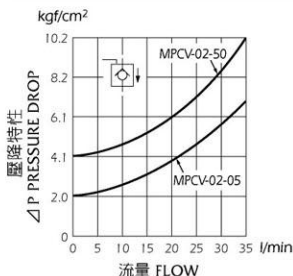
測試條件 PERFORMANCE CURVES:

測試油黏度 TEST FLUID VISCOSITY : 35 cSt

測試油溫度 TEST TEMPERATURE : 50°C

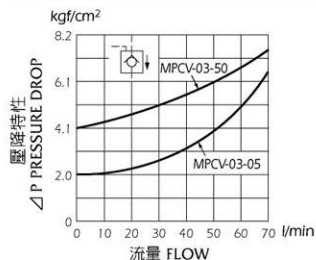
● MPCV-02

自由流壓力降特性 PRESSURE DROP - FREE FLOW



● MPCV-03

自由流壓力降特性 PRESSURE DROP - FREE FLOW

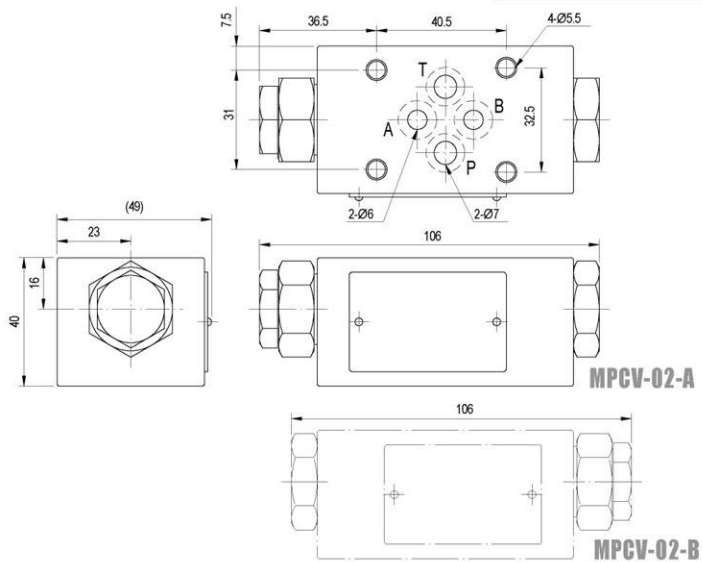


安裝尺寸

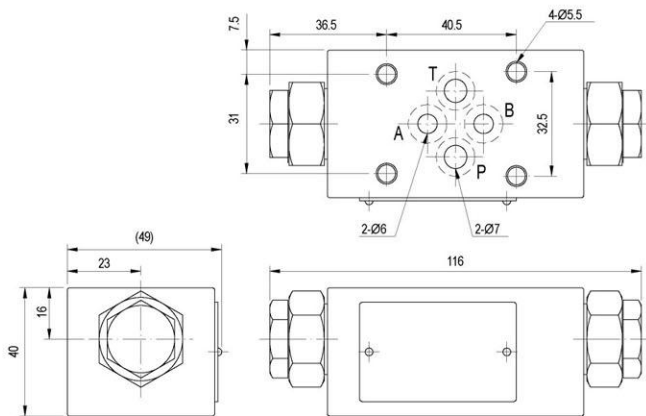
INSTALLATION DIMENSIONS

單位UNIT : mm

MPCV-02-A/B



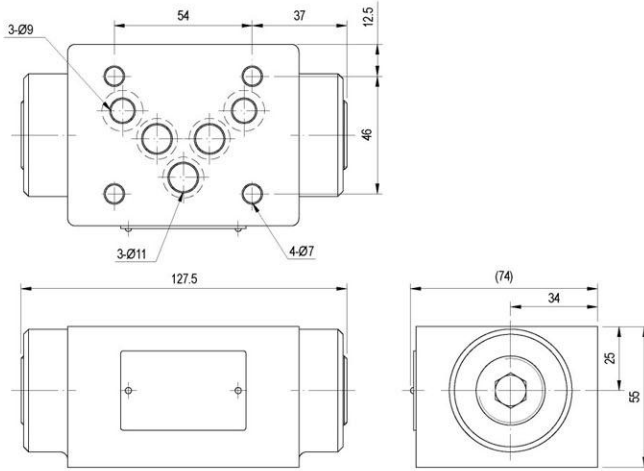
MPCV-02-W



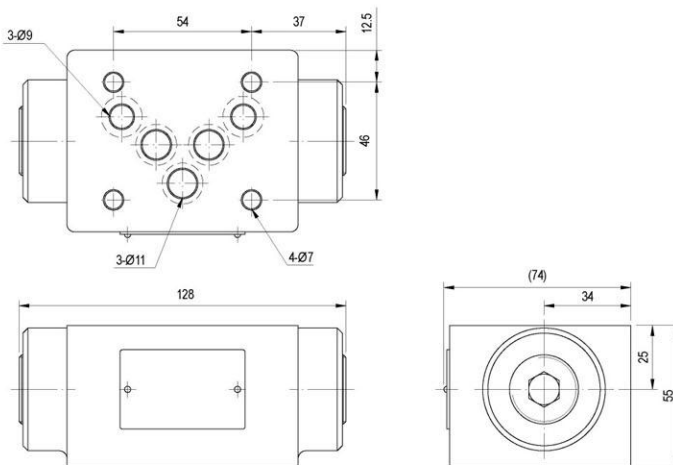
單位UNIT : mm

安裝尺寸 INSTALLATION DIMENSIONS

MPCV-03-A/B



MPCV-03-W



測試條件 PERFORMANCE CURVES

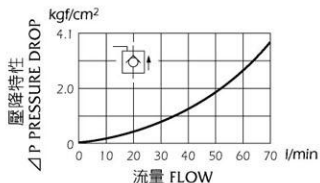
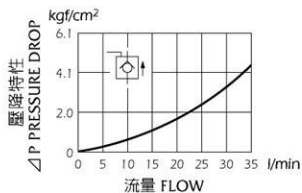
測試油黏度 TEST FLUID VISCOSITY : 35 cSt

測試油溫度 TEST TEMPERATURE : 50°C

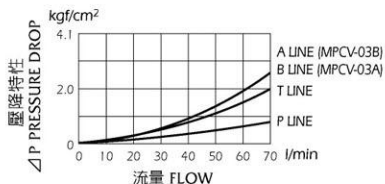
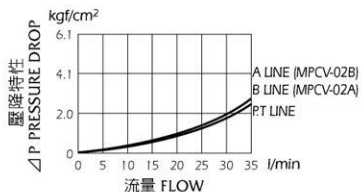
● MPCV-02

● MPCV-03

逆自由流壓力降特性 PRESSURE DROP FOR REVERSE CONTROLLED FLOW



壓力降特性 PRESSURE DROP



最小先導壓力特性 MIN. PILOT PRESSURE

