

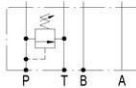
疊加式溢流閥

Modular Relief Valves

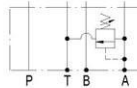


閥類型符號 SYMBOL

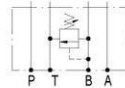
MRV - ※



MRV-02.03P



MRV-02.03A



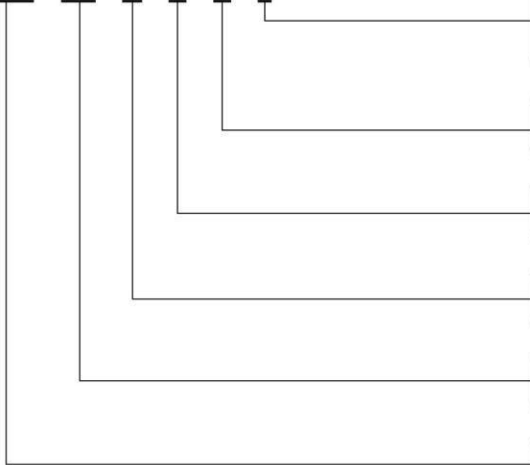
MRV-02.03B

規格說明 SPECIFICATION :

型式 MODEL	最高使用壓力 MAX. OPERATING PRESSURE kgf/cm ²	壓力調整範圍 PRESSURE ADJ. RANGE kgf/cm ²	最大流量 MAX. FLOW l/min	重量 WEIGHT kg
MRV-02-※	250	1 : 7-70	35	1.6
MRV-03-※		2 : 7-140		
		3 : 7-210	70	3.5

型號說明 HOW TO ORDER :

MRV - 02 - P - 3 - A - L



旋轉型式 KNOB TYPE
無標示為K：把手旋鈕螺桿調整（標準型式）
NO MARK FOR K : HAFT TURNING KNOB BOLT ROD ADJUST (STANDARD TYPE.)
L：內六角螺桿調整 INNER HEXANGULAR BOLT ROD ADJUST.

調整把手方向 DIRECTION OF KNOB
A：A口側 A PORT SIDE
B：B口側標準型 B PORT SIDE STANDARD TYPE

壓力調整範圍 PRESSURE ADJUSTING RANGE
1 : 7-70 kgf/cm² 2 : 7-140 kgf/cm²
3 : 7-210 kgf/cm²

口徑編號 SERIES NUMBER
P : P PORT A : A PORT
B : B PORT

閥規格 VALVE SIZE
02 : 1 / 4" 03 : 3 / 8"

系列編號 SERIES NUMBER

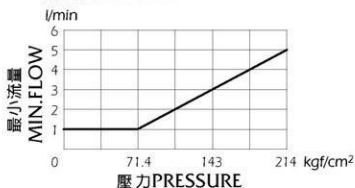
測試條件 PERFORMANCE CURVES:

測試油黏度 TEST FLUID VISCOSITY : 35 cSt

測試油溫度 TEST TEMPERATURE : 50°C

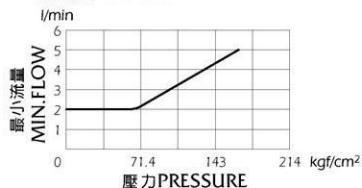
● MRV-02

最小流量 MIN.FLOW :



● MRV-02

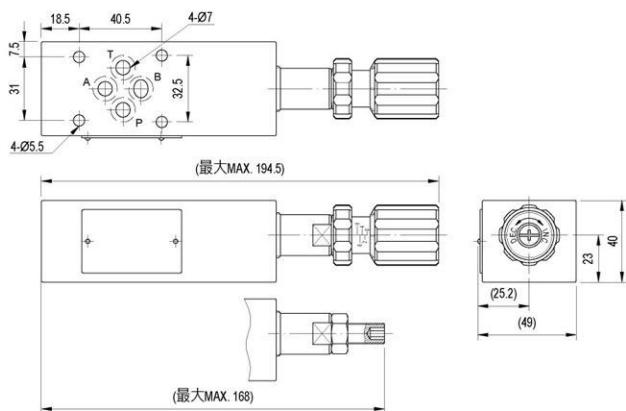
最小流量 MIN.FLOW :



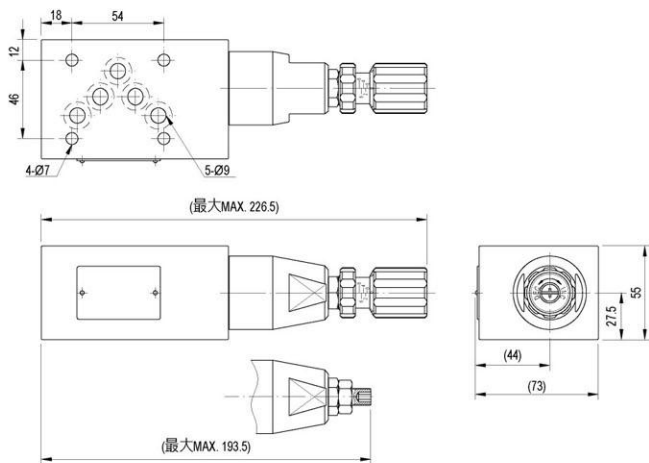
安裝尺寸 INSTALLATION DIMENSIONS

單位UNIT : mm

MRV-02



MRV-03



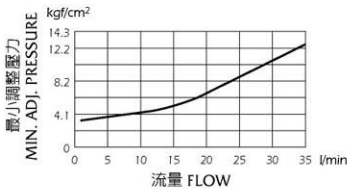
壓降特性 PRESSURE DROP

下列壓降特性是在油液黏度 35 cSt (mm/s) 和比重0.850條件下測得

Pressure drop curves based on viscosity of 35 cSt (160 SSU) and specific gravity of 0.850

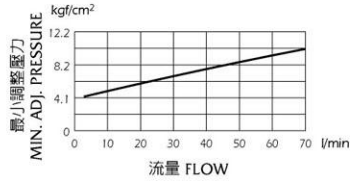
● MRV-02

最小調整壓力 MIN.ADJ PRESSURE

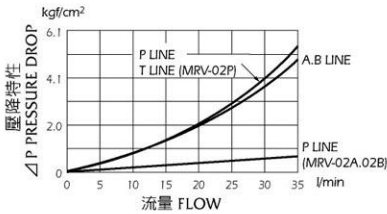


● MRV-03

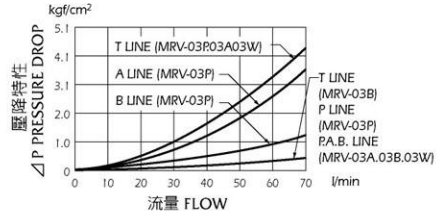
最小調整壓力 MIN.ADJ PRESSURE



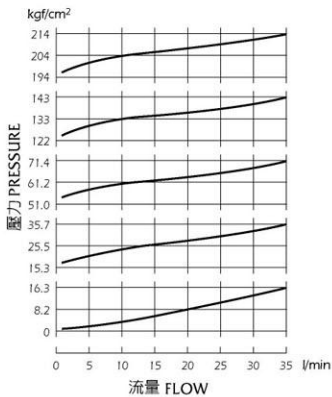
壓力降特性 PRESSURE DROP



壓力降特性 PRESSURE DROP



流量—壓力特性 NOMINAL OVERRIDE



流量—壓力特性 NOMINAL OVERRIDE

