



**DIPLOMATIC
HYDRAULICS**

64 200/197 ED



MERS

FLOW RESTRICTOR VALVE SERIES 50

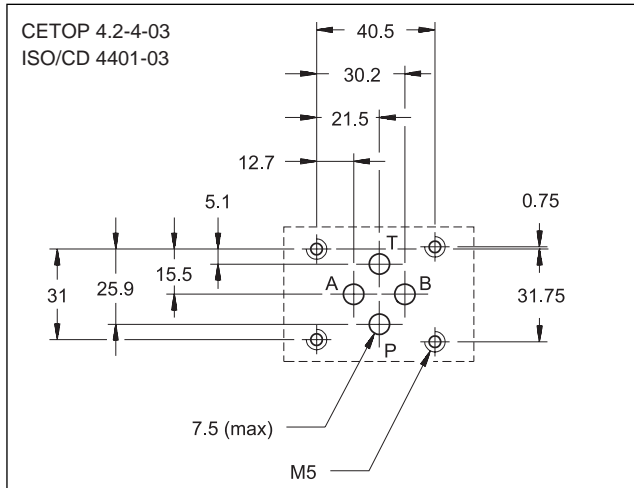
MODULAR VERSION

CETOP 03

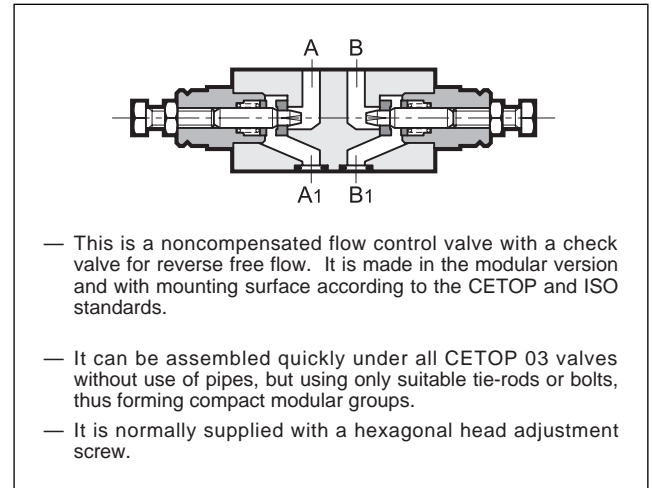
p max 350 bar

Q max (see performance ratings table)

MOUNTING INTERFACE



OPERATING PRINCIPLE



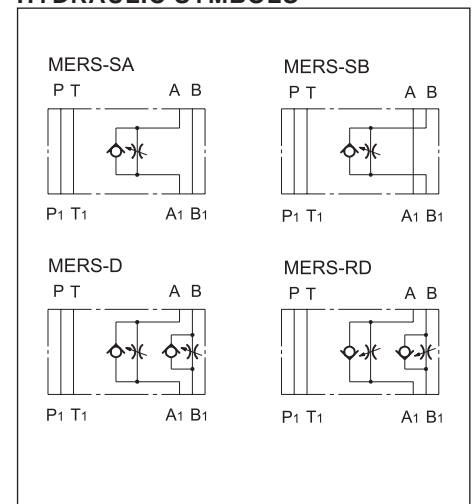
CONFIGURATIONS (see Hydraulic symbols table)

- Configuration "SA": is utilized in cases in which control of the flow exiting from the actuator on line A is desired.
- Configuration "SB": is utilized in cases in which control of the flow exiting from the actuator on line B is desired.
- Configuration "D": independently controls the flow exiting the two chambers of the actuator.
- Configuration "RD": independently controls the flow entering the two chambers of the actuator.
- All the configurations have an incorporated check valve that allows reverse free flow (cracking pressure of 0,5 bar).

PERFORMANCE RATINGS (measured with mineral oil of viscosity 36cSt at 50°C)

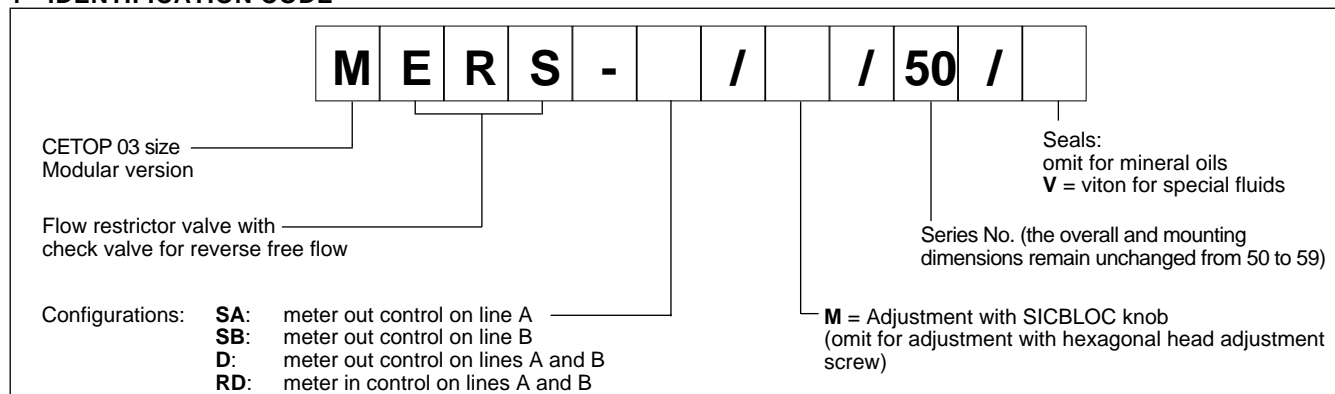
Maximum operating pressure	bar	350
Check valve cracking pressure	bar	0,5
Maximum flow rate in the controlled lines	l/min	50
Maximum flow rate in the free lines	l/min	75
Minimum controlled flow rate with Δp 10 bar	l/min	$\leq 0,060$
Ambient temperature range	°C	-20 ÷ +50
Fluid temperature range	°C	-20 ÷ +70
Fluid viscosity range	cSt	2,8 ÷ 380
Recommended filtration	μm absolute	≤ 25
Recommended viscosity	cSt	25
Mass:	kg	1,3

HYDRAULIC SYMBOLS

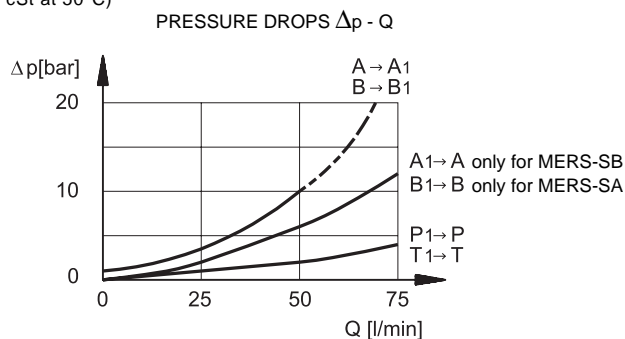
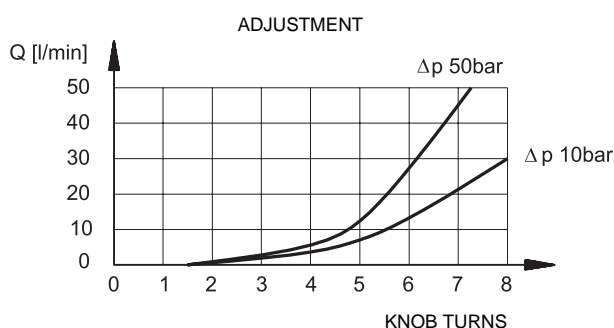




1 - IDENTIFICATION CODE



2 - CHARACTERISTIC CURVES (values obtained with viscosity of 36 cSt at 50°C)



3 - HYDRAULIC FLUIDS

Use mineral oil-based hydraulic fluids, with the addition of suitable anti-frothing and anti-oxidizing agents. For the use of other types (water glycol, phosphate esters and others), please consult our technical department.

4 - OVERALL AND MOUNTING DIMENSIONS

