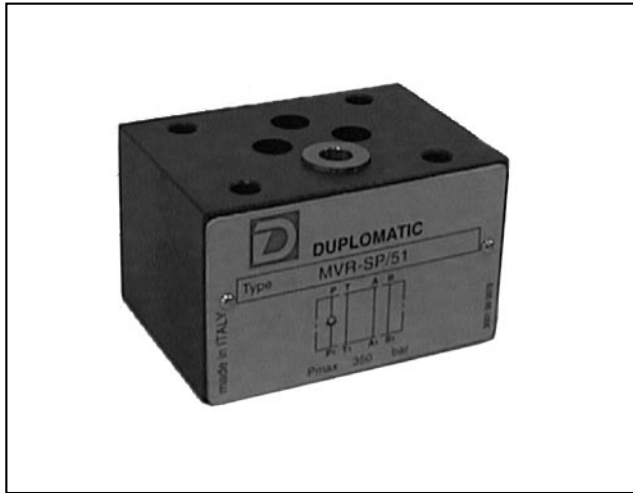




**DIPLOMATIC**  
HYDRAULICS

65 200/197 ED



# MVR

## DIRECT CHECK VALVE

### SERIES 51

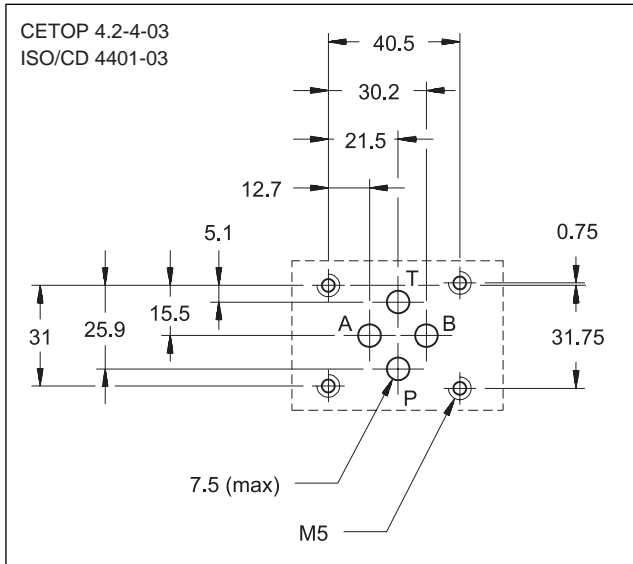
#### MODULAR VERSION

#### CETOP 03

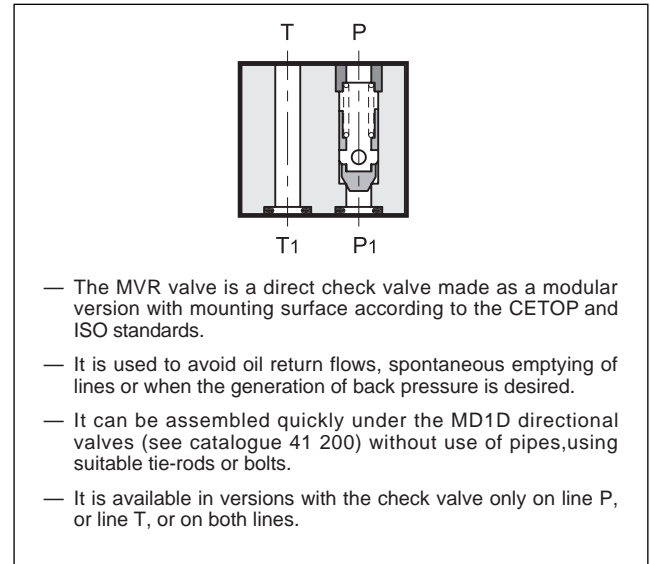
**p** max 350 bar

**Q** max (see performance ratings table)

#### MOUNTING INTERFACE



#### OPERATING PRINCIPLE



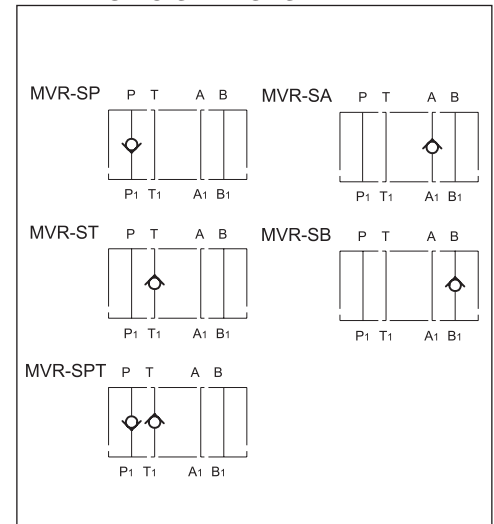
#### CONFIGURATIONS (see Hydraulic symbols table)

- MVR-SP: check valve on line P.
- MVR-SA: check valve on line A.
- MVR-ST: check valve on line T.
- MVR-SB: check valve on line B.
- MVR-SPT: check valve on lines P and T.

#### PERFORMANCE RATINGS (measured with mineral oil of viscosity 36cSt at 50°C)

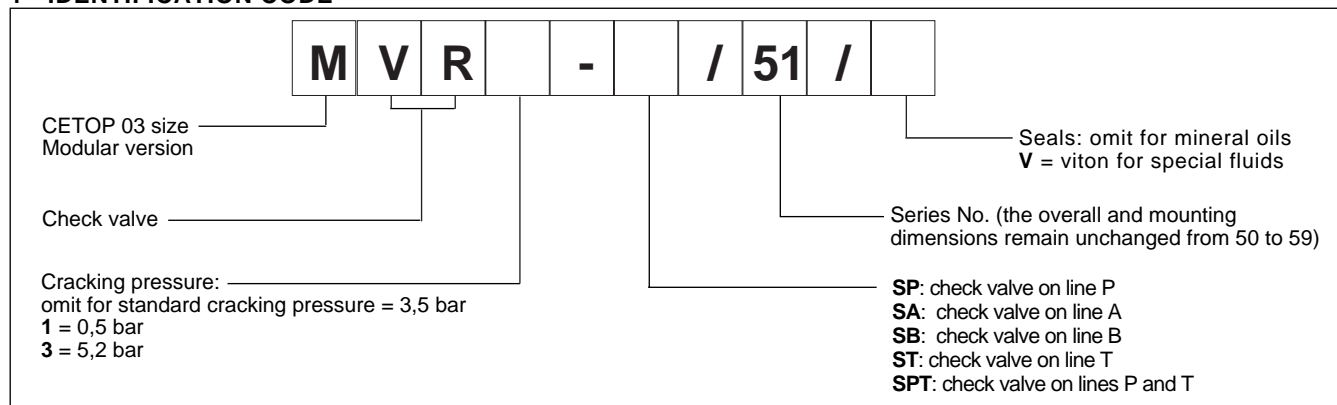
Maximum operating pressure	bar	350
Check valve cracking pressure	bar	3,5 - 0,5 - 5,2
Maximum flow rate in the controlled lines	l/min	50
Maximum flow rate in the free lines	l/min	75
Ambient temperature range	°C	-20 ÷ +50
Fluid temperature range	°C	-20 ÷ +70
Fluid viscosity range	cSt	2,8 ÷ 380
Recommended filtration	µm absolute	≤ 25
Recommended viscosity	cSt	25
Mass	kg	1

#### HYDRAULIC SYMBOLS

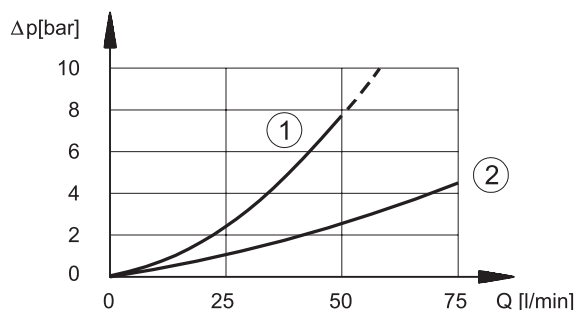




## 1 - IDENTIFICATION CODE



## 2 - CHARACTERISTIC CURVES (values obtained with viscosity of 36 cSt at 50°C)



① pressure drops on controlled lines

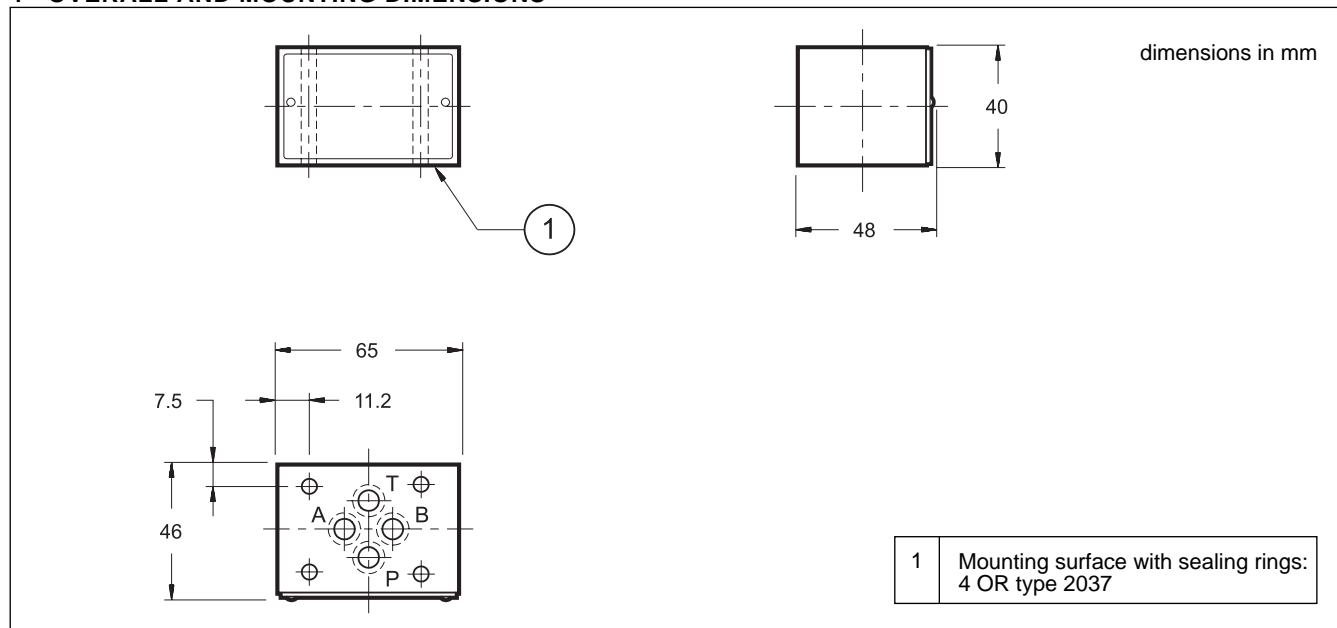
② pressure drops on free lines

**NOTE:** check valve cracking pressure must be added to the values indicated with the curve ① of the diagram

## 3 - HYDRAULIC FLUIDS

Use mineral oil-based hydraulic fluids, with the addition of suitable anti-frothing and anti-oxidizing agents. For the use of other types (water glycol, phosphate esters and others), please consult our technical department.

## 4 - OVERALL AND MOUNTING DIMENSIONS



**DIPLOMATIC OLEODINAMICA SpA**  
20025 LEGNANO (MI) - P.le Bozzi, 1 / Via Edison  
Tel. 0331/472111-472236 - Fax 0331/548328