



DIPLOMATIC
HYDRAULICS

62 200/197 ED



MZD

DIRECT OPERATED THREE-WAY PRESSURE REDUCING VALVE SERIES 50

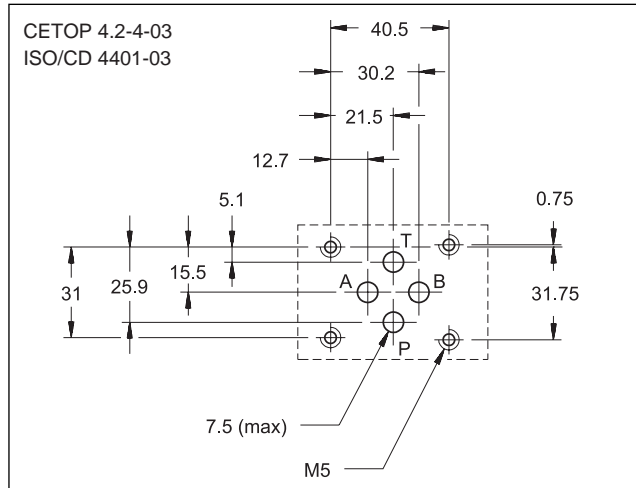
MODULAR VERSION

CETOP 03

p max 350 bar

Q max (see performance ratings table)

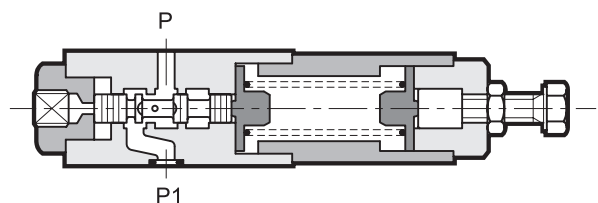
MOUNTING INTERFACE



CONFIGURATIONS (see Hydraulic symbols table)

- MZD*: pressure reduction on line P, drainage connected with line T.
- MZD*/A: pressure reduction on line A toward the actuator and maximum pressure in line B, drainage connected with line T.
- MZD*/B: pressure reduction on line B toward the actuator and maximum pressure in line A, drainage connected with line T.

OPERATING PRINCIPLE

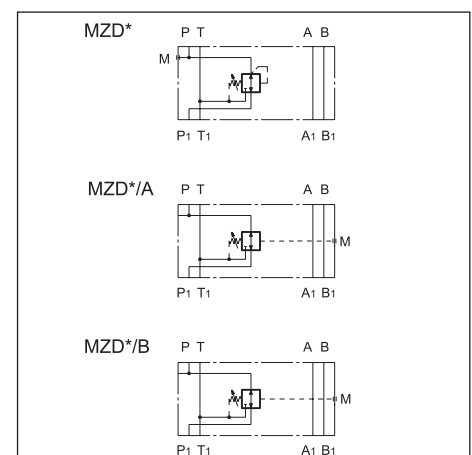


- The MZD valve is a three-way spool type direct operated pressure reducing valve. It is normally open in the rest position and the hydraulic fluid passes freely from the P₁ line to the P line.
- The spool is subjected to the line P pressure on one side, and on the other side by the adjustment spring. When the pressure in line P exceeds the value set by the spring, the valve closes until the pressure in P (reduced) equals the calibrated value.
- The valve construction provides good adjustment sensitivity with reduced drainage flow. The drainage is connected to line T inside the valve.
- The three-way design provides protection of the secondary circuit from pressure surges since it allows a reverse flow from the actuator to the T discharge line.
- It is made as a modular version with ports according to the CETOP and ISO standards and can be assembled quickly, without use of pipes, under the MD1D solenoid valves (see catalogue 41 200).
- It is normally supplied with a hexagonal head adjustment screw. Upon request, it can be equipped with a SICBLOC adjustment knob.

PERFORMANCE RATINGS (measured with mineral oil of viscosity 36cSt at 50°C)

Maximum operating pressure	bar	350
Maximum pressure on port T	bar	10
Maximum flow rate in the controlled lines	l/min	50
Maximum flow rate in the free lines	l/min	75
Drainage flow rate	l/min	≤ 0,08
Ambient temperature range	°C	-20 ÷ +50
Fluid temperature range	°C	-20 ÷ +70
Fluid viscosity range	cSt	2,8 ÷ 380
Recommended filtration	µm absolute	≤ 25
Recommended viscosity	cSt	25
Mass	kg	1,4

HYDRAULIC SYMBOLS





1 - IDENTIFICATION CODE

	M	Z	D	/	/	/	50	/	
--	----------	----------	----------	---	---	---	-----------	---	--

CETOP 03 size
Modular version

Direct operated pressure reducing valve

Pressure adjustment range:
2 = 3 ÷ 35 bar **4** = 30 ÷ 140 bar
3 = 10 ÷ 70 bar **5** = 50 ÷ 280 bar

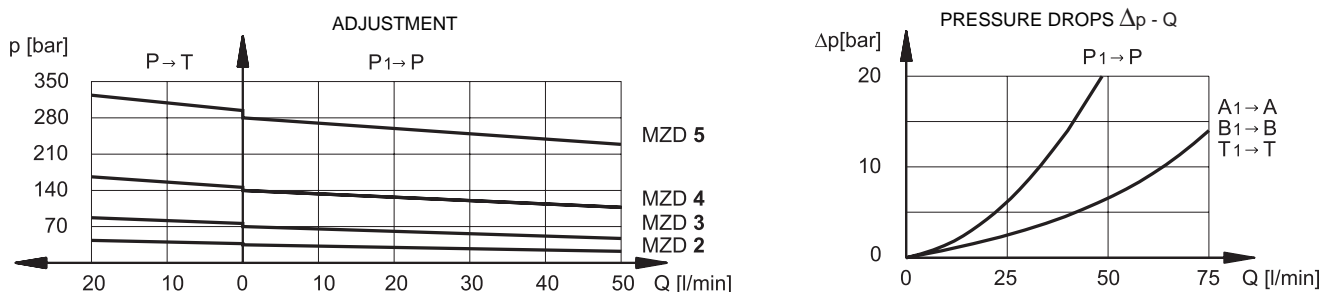
Configurations
 (omit for MZD with control on P)
A: pressure reduction on line A and full pressure on line B
B: pressure reduction on line B and full pressure on line A

Seals:
 omit for mineral oils
V = viton for special fluids

Series No. (the overall and mounting dimensions remain unchanged from 50 to 59)

M = Adjustment with SICBLOC knob
 (omit for adjustment with hexagonal head screw)

2 - CHARACTERISTIC CURVES (values obtained with viscosity of 36 cSt at 50°C)



3 - HYDRAULIC FLUIDS

Use mineral oil-based hydraulic fluids, with the addition of suitable anti-frothing and anti-oxidizing agents. For the use of other types (water glycol, phosphate esters and others), please consult our technical department.

4 - OVERALL AND MOUNTING DIMENSIONS

1	Mounting surface with sealing rings: 4 OR type 2037
2	Pressure gauge port 1/4" BSP
3	Hexagonal head adjustment screw. Spanner 17. Rotate clockwise to increase pressure
4	SICBLOC knob. To operate, push and rotate at the same time.

dimensions in mm

	<p>DUPLOMATIC OLEODINAMICA SpA 20025 LEGNANO (MI) - P.le Bozzi, 1 / Via Edison Tel. 0331/472111-472236 - Fax 0331/548328</p>
--	---