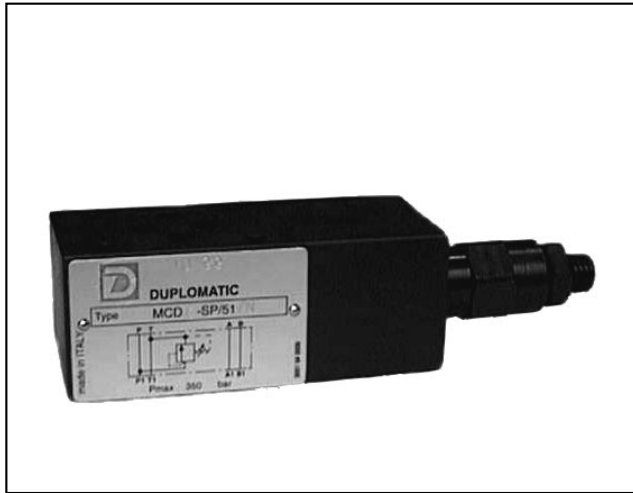




DIPLOMATIC
HYDRAULICS

61 200/199 ED



MCD

DIRECT OPERATED PRESSURE RELIEF VALVE SERIES 51

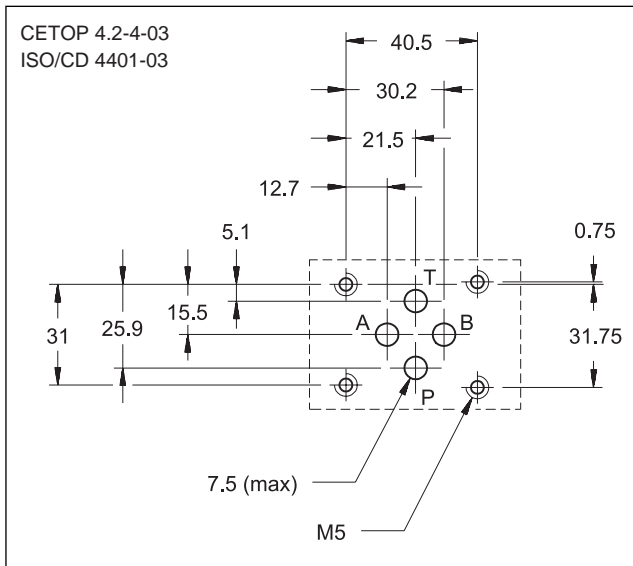
MODULAR VERSION

CETOP 03

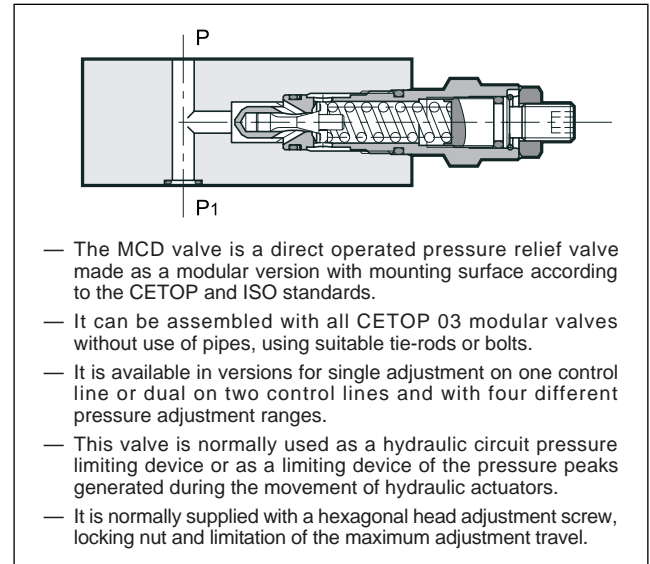
p max 350 bar

Q max (see performance ratings table)

MOUNTING INTERFACE



OPERATING PRINCIPLE



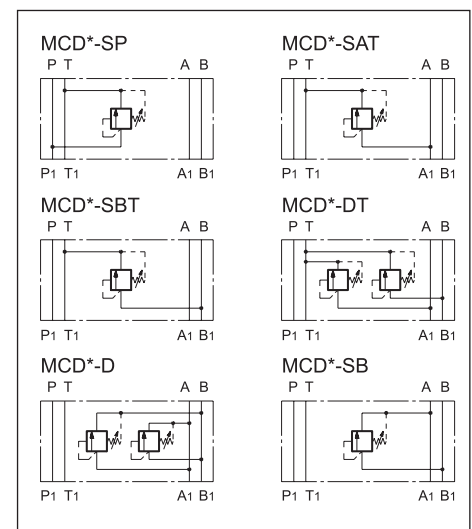
CONFIGURATIONS (see Hydraulic symbols table)

- Configuration "SP": controls the pressure on line P with discharge in T.
- Configuration "SAT": controls the pressure on line A with discharge in T.
- Configuration "SBT": controls the pressure on line B with discharge in T.
- Configuration "DT": controls the pressure on lines A-B with discharge in T.
- Configuration "D": controls the pressure on lines A-B with crossed discharges
- Configuration "SB": controls the pressure on line B with discharge in A.

PERFORMANCE RATINGS (measured with mineral oil of viscosity 36cSt at 50°C)

Maximum operating pressure	bar	350
Minimum controlled pressure	see Δp -Q diagram	
Maximum flow rate in the controlled lines	l/min	50
Maximum flow rate in the free lines	l/min	75
Ambient temperature range	°C	-20 ÷ +50
Fluid temperature range	°C	-20 ÷ +70
Fluid viscosity range	cSt	2,8 ÷ 380
Recommended filtration	μm absolute	≤ 25
Recommended viscosity	cSt	25
Mass: MCD - SP / MCD - SAT / MCD - SBT / MCD - SB	kg	1,4
MCD - DT / MCD - D	kg	2,0

HYDRAULIC SYMBOLS



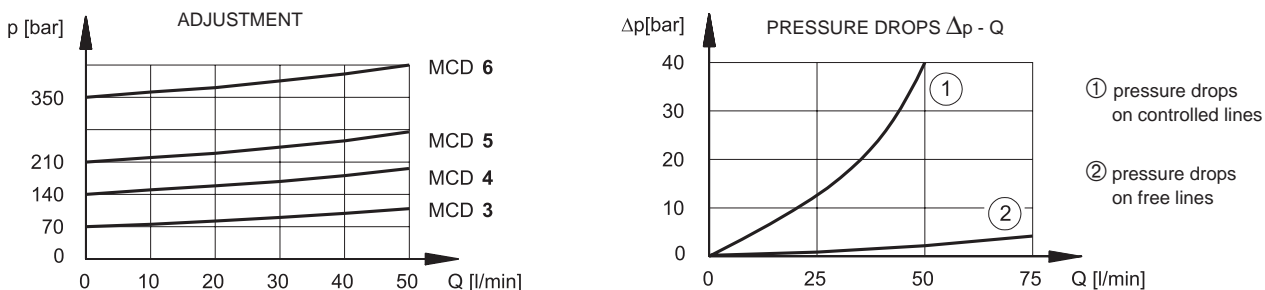


1 - IDENTIFICATION CODE

M	C	D	-	/	51	/	/
----------	----------	----------	----------	----------	-----------	----------	----------

M: CETOP 03 size
C: Modular version
D: Direct operated pressure relief valve
3: Pressure adjustment range up to 70 bar
4: Pressure adjustment range up to 140 bar
5: Pressure adjustment range up to 210 bar
6: Pressure adjustment range up to 350 bar
Seals:
N: NBR seals for mineral oils (**standard**)
V: FPM seals for special fluids
Series No. (the overall and mounting dimensions remain unchanged from 50 to 59)
omit for adjustment with countersunk hex screw - standard
K = Adjustment knob
Configurations:
SP: single on line P with discharge in T
SAT: single on line A with discharge in T
SBT: single on line B with discharge in T
DT: double on lines A-B with discharge in T
D: double on lines A-B with crossed discharges
SB: single on line B with discharge in A

2 - CHARACTERISTIC CURVES (values obtained with viscosity of 36 cSt at 50°C)



3 - HYDRAULIC FLUIDS

Use mineral oil-based hydraulic fluids, with the addition of suitable anti-frothing and anti-oxidizing agents. For the use of other types (water glycol, phosphate esters and others), please consult our technical department.

4 - OVERALL AND MOUNTING DIMENSIONS

dimensions in mm

1	Locking nut: spanner 19
2	Countersunk hex adjustment screw: spanner 6 (standard) Rotate clockwise to increase pressure
3	Mounting surface with sealing rings: 4 OR type 2037
4	Adjustment knob: K
5	Locking ring



DIPLOMATIC OLEODINAMICA SpA
 20025 LEGNANO (MI) - P.le Bozzi, 1 / Via Edison
 Tel. 0331/472111-472236 - Fax 0331/548328