



PILOT OPERATED CHECK MODULAR VALVE



PILOT OPERATED CHECK MODULAR VALVE

50~300 ℓ/min
25,35MPa

특징

①ACTUATOR의 자유낙하방지, 위치 유지 등에 사용하는 PILOT CHECK

VALVE를 MODULAR 화 한 VALVE 입니다.

②최고사용압력 25, 35Mpa{255, 357kgf/cm²}입니다.

사양

형식	호칭경 (SIZE)	최고사용압력 MPa(kgf/cm ²)	최대유량 ℓ/min	CRACKING 압력 MPa(kgf/cm ²)	면적비			질량 kg	GASKET 면 치수
					PILOT PISTON	CHECK VALVE SEAT 부분	NEEDLE VALVE SEAT 부분		
OCP-G01-W1-21 W2	1/8	25{255}	50	0.2{2.0} 0.5{5.1}	1	0.37	-	1.2	ISO 4401-03-02-0-94
OCP-G01-A1-21 A2				0.2{2.0} 0.5{5.1}					
OCP-G01-B1-21 B2				0.2{2.0} 0.5{5.1}					
OCP-G01-W1-F-21 W2				1	0.51	0.06	0.2{2.0} 0.5{5.1}		
OCP-G01-A1-F-21 A2							0.2{2.0} 0.5{5.1}		
OCP-G01-B1-F-21 B2							0.2{2.0} 0.5{5.1}		
OCP-G03-W1-J50 W2	3/8	25{255}	100	0.2{2.0} 0.5{5.1}	1	0.49	0.07	3.6	ISO 4401-05-04-0-94
OCP-G03-A1-J50 A2				0.2{2.0} 0.5{5.1}					
OCP-G03-B1-J50 B2				0.2{2.0} 0.5{5.1}					
OCP-G03-W1-D-J50 W2				1	0.49	-	0.2{2.0} 0.5{5.1}		
OCP-G03-A1-D-J50 A2							0.2{2.0} 0.5{5.1}		
OCP-G03-B1-D-J50 B2							0.2{2.0} 0.5{5.1}		
OPH-G04-W1-10 W2	1/2	35{357}	300	0.2{2.0} 0.5{5.1}	1	0.50	0.07	6.8	ISO 4401-07-06-0-94
OPH-G04-A1-10 A2				0.2{2.0} 0.5{5.1}					
OPH-G04-B1-10 B2				0.2{2.0} 0.5{5.1}					
OPH-G04-W1-D-10 W2				1	0.50	-	0.2{2.0} 0.5{5.1}		
OPH-G04-A1-D-10 A2							0.2{2.0} 0.5{5.1}		
OPH-G04-B1-D-10 B2							0.2{2.0} 0.5{5.1}		

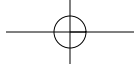
●취급

- ①01-SIZE에서 보조기호 "F"가 있는 경우는, TANK PORT 배압으로 인하여 작은 POPPET가 열려서 압력유지가 되지 않을 수 있으므로 주의하여 주십시오.
- ②03, 04-SIZE에서 TANK PORT 배압으로 인하여 작은 POPPET가 열려서, 압력유지가 되지 않을 경우에는 보조기호 "D" DIRECT-TYPE을

- 사용하여 주십시오.
- ③최저 PILOT 압력은 역류할 때 입구 측의 압력에 의하여 변화합니다. 최저 PILOT 압력 특성 그래프에서 구한 필요 압력보다 20% 이상 높은 압력으로 작동시켜 주십시오.
- ④SUB-PLATE 및 설치 BOLT는 포함되어 있지 않으므로 필요할 때에는 D-90~D-95 페이지에서 지정하여

- 주십시오.
- ⑤04-SIZE MODULAR VALVE에는 DRAIN-PORT L(DR2)이 설치되어 있지 않으므로 PRESSURE CENTER TYPE SOLENOID VALVE(D-TYPE)와 조합하여 사용할 수 없습니다.

D MODULAR VALVE

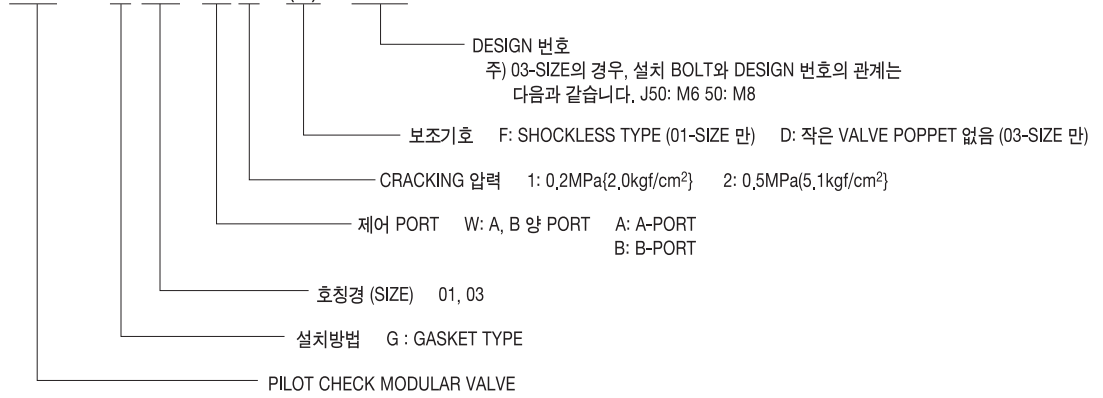


D
MODULAR VALVE

형식설명

01. 03 SIZE

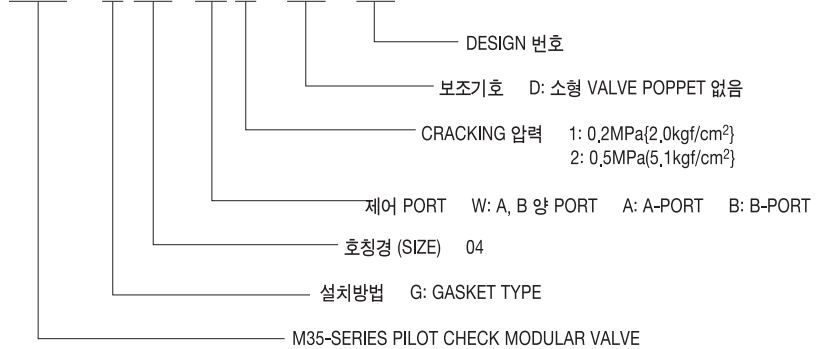
OCP - G 03 - W 1 - (D) - J50



형식설명

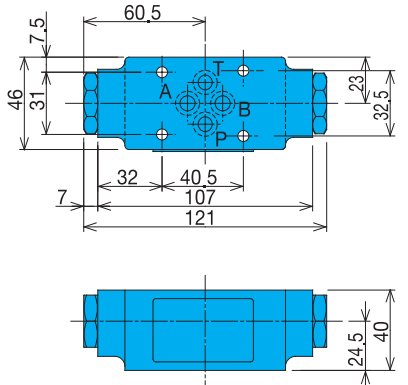
SIZE

OPH - G 04 - W 1 - (D) - 10

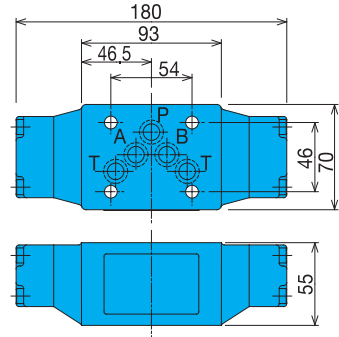


설치치수도

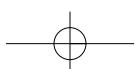
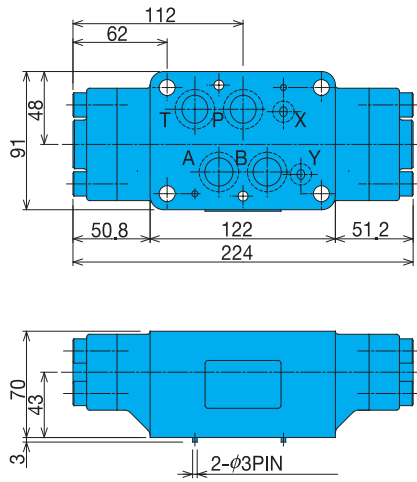
OCP-G01-**-*(F)-21



OCP-G03-**-*(D)-J50



OPH-G04-**-*(D)-10

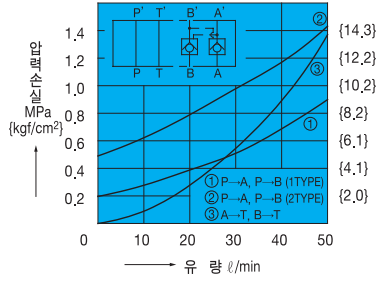


성능곡선

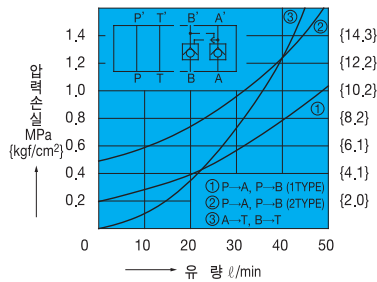
작동유 동점도 32mm²/s

압력손실특성

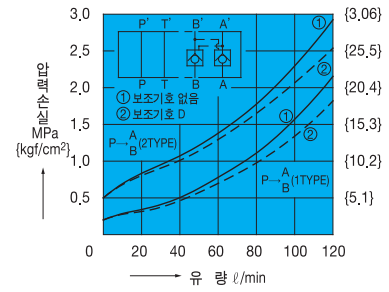
OCP-G01-W*-21



OCP-G01-W*-F-21

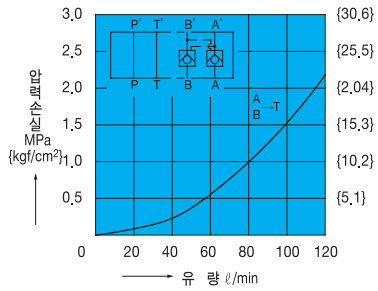


OCP-G03-W*-(D)-J50

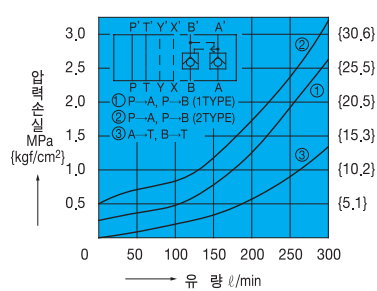


압력손실특성 (역자유흐름)

OCP-G03-W*-J50

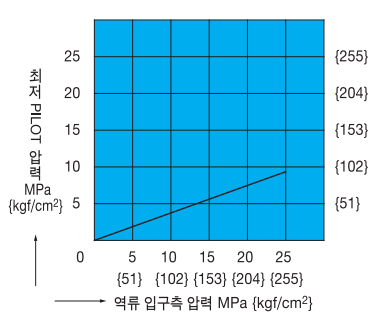


OPH-G04-W*-10

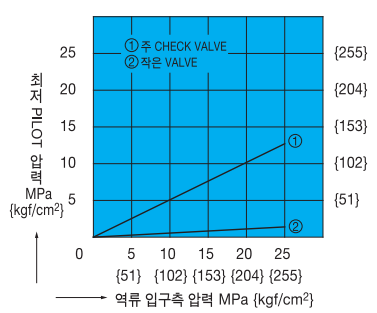


최저 PILOT 압력특성

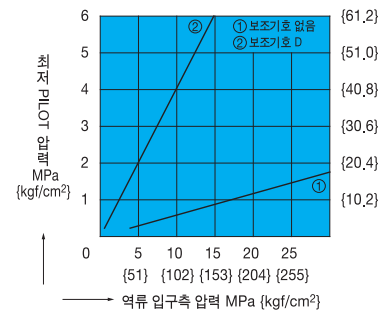
OCP-G01-**-21



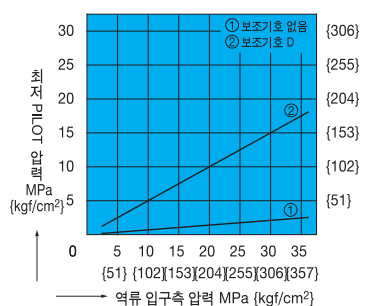
OCP-G01-**-F-21



OCP-G03-W*-(D)-J50



OPH-G04-W*-(D)-10

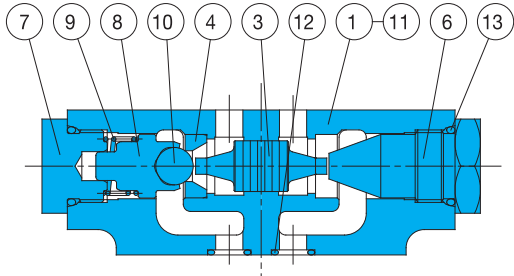


D
MODULAR VALVE

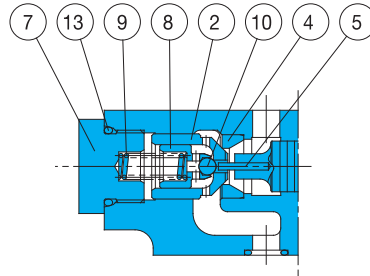
D
MODULAR VALVE

단면구조도

OCP-G01-A*-21



OCP-G01-A*-F-21



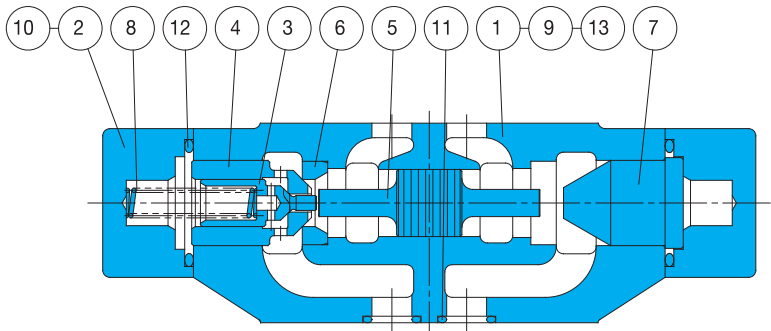
품번	부품명칭
1	BODY
2	POPPET
3	PISTON
4	SEAT
5	ROD
6	BUSHING
7	GUIDE
8	GUIDE
9	SPRING
10	BALL
11	PLATE
12	O-RING
13	O-RING

SEAL 부품 일람표 (KIT 형식 BDBS-O1CP*)

품번	부품명칭	부품형식번호	개수		
			W	A	B
12	O-RING	1B-P9	4	4	4
13	O-RING	1B-P18	2	2	2

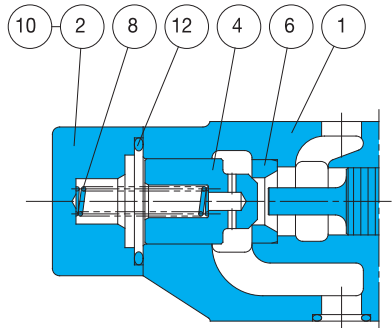
주) 1. O-RING1 A, B-**는 JIS B2401-1A/B-**를 나타냅니다.
 2. KIT 형식의 *표시는 W, A, B의 어느 하나로 지시하여 주십시오.

OCP-G03-A*-J50



품번	부품명칭
1	BODY
2	COVER
3	POPPET
4	POPPET
5	PISTON
6	SEAT
7	BUSHING
8	SPRING
9	PLATE
10	SCREW
11	O-RING
12	O-RING
13	PIN

OCP-G03-**-D-J50

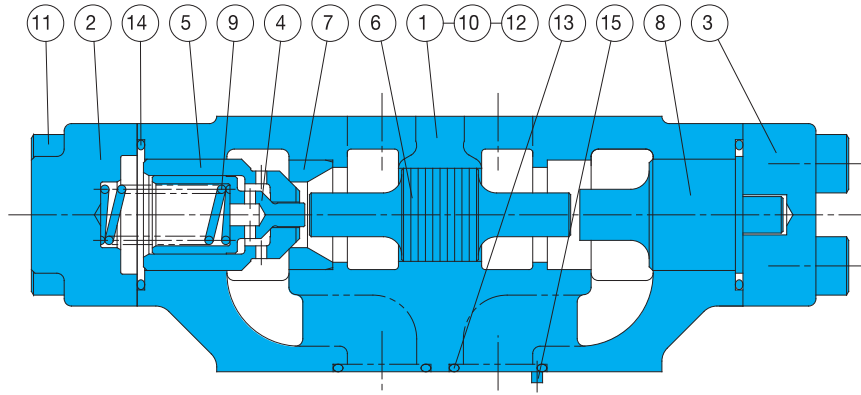


SEAL 부품 일람표 (KIT 형식 BDES-O3CP*)

품번	부품명칭	부품형식번호	개수		
			W	A	B
11	O-RING	AS568-014(Hs90)	5	5	5
12	O-RING	1B-P29	2	2	2

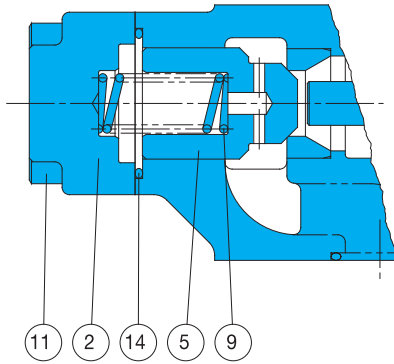
주) 1. O-RING1 A, B-**는 JIS B2401-1A/B-**를 나타냅니다.
 2. KIT 형식의 *표시는 W, A, B의 어느 하나로 지시하여 주십시오.

OPH-G04-A*-10



품번	부품명칭
1	BODY
2	COVER
3	COVER
4	POPPET
5	PISTON
6	PISTON
7	SEAT
8	BUSHING
9	SPRING
10	PLATE
11	SCREW
12	O-RING
13	O-RING
14	O-RING
15	PIN

OPH-G04-**-D-10



SEAL 부품 일람표 (KIT 형식 BDKS-O4CP*)

품번	부품명칭	부품형식번호	개수		
			W	A	B
12	O-RING	AS568-012(Hs90)	2	2	2
13	O-RING	AS568-118(Hs90)	4	4	4
14	O-RING	AS568-127(Hs90)	2	2	2

주) KIT 형식의 *표시는 W, A, B의 어느 하나로 지시하여 주십시오.