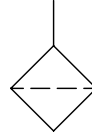


OFS

Inlet strainers



가

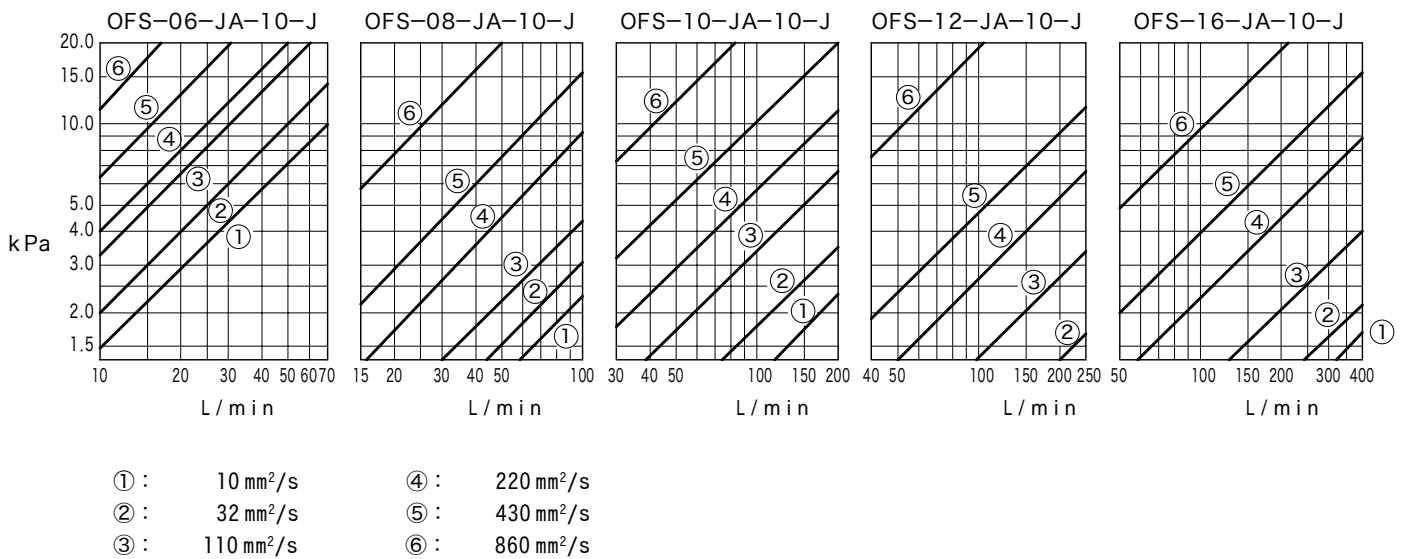
形式

OFS-06-JA-10-J

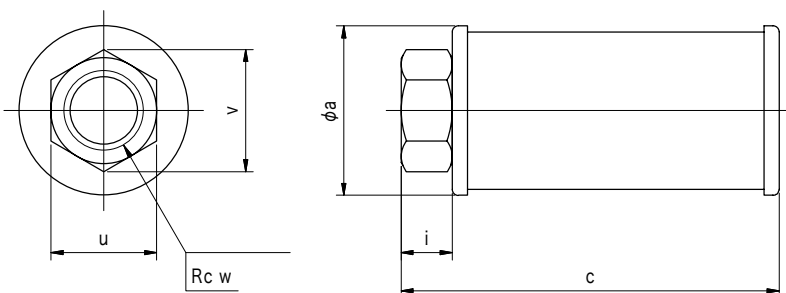
1 2 3

- 1 「 」
- 2 「 」
- 3 「 」

	Rc	L/min	μm	kg
OFS-06	3/4	35	150	0.2
OFS-08	1	60		0.4
OFS-10	1-1/4	90		0.6
OFS-12	1-1/2	140		0.8
OFS-16	2	240		1.3



R
2

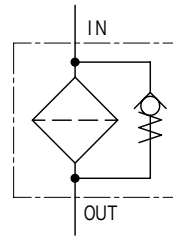


	a	c	i	u	v	w
OFS-06	56	125	17	35 ⁰ _{-0.35}	40.4	3/4
OFS-08	80	190	19	46 ⁰ _{-0.4}	53.1	1
OFS-10	100	233	23	58 ⁰ _{-0.5}	67.0	1-1/4
OFS-12	119	258	25	63 ⁰ _{-0.6}	72.7	1-1/2
OFS-16	147	333	30	77 ⁰ _{-0.7}	88.9	2

Return Line

Return line filters

OFR



●Return Line
가

가

OFR-08F-10

- 1 2 3 4

1 Return Line

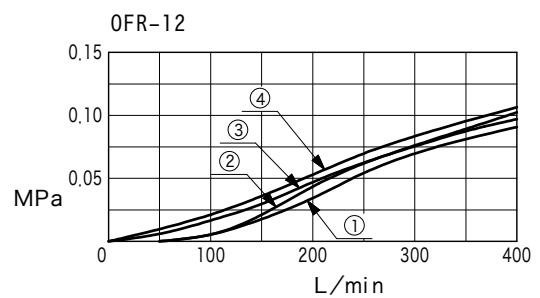
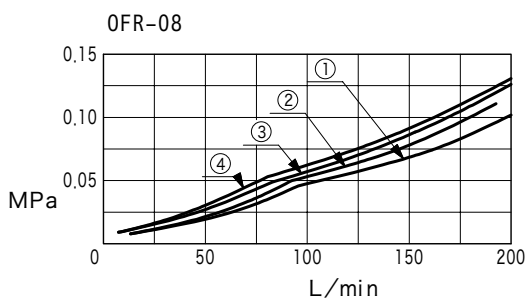
2 「 」

3 F:

4
10:10 μm
25:25 μm

		MPa	L/min	MPa	kg
OFR-08	1	1.5	80	0.06 ※	2.7
OFR-12	1-1/2		200		6

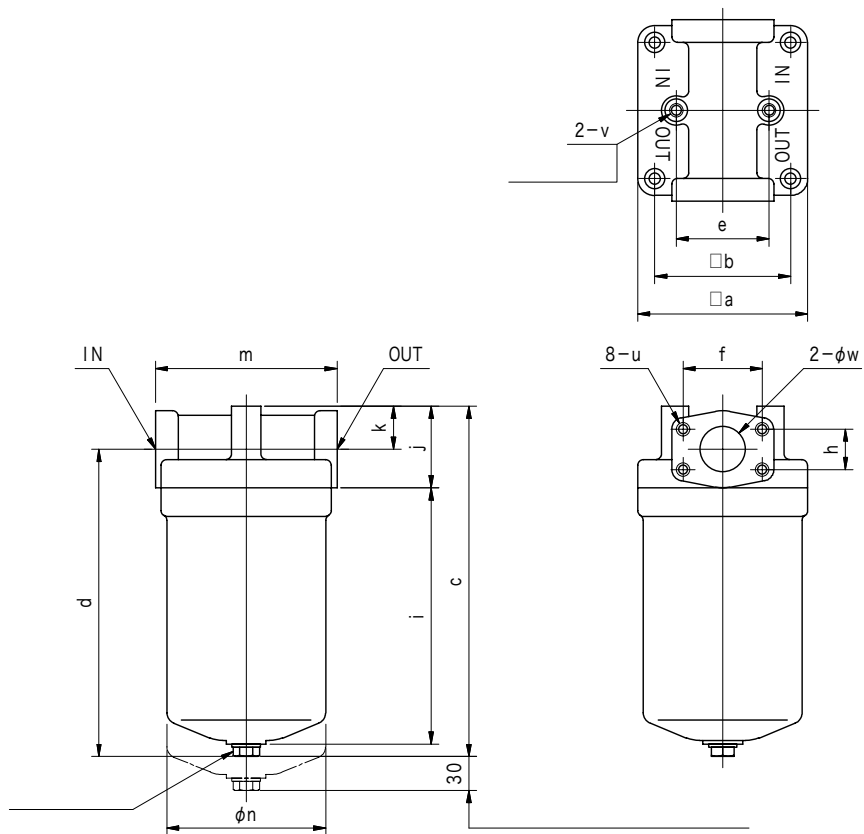
※:



- ① : 22 mm²/s, 25 μm
- ② : 22 mm²/s, 10 μm
- ③ : 68 mm²/s, 25 μm
- ④ : 68 mm²/s, 10 μm

● IN,OUT . OUT

● 가 가



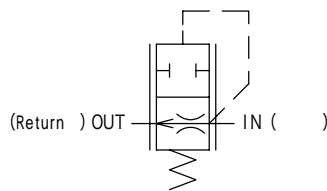
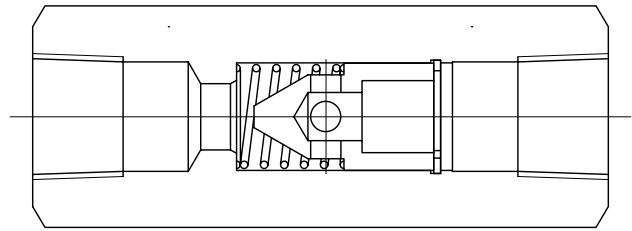
	w	a	b	c	d	e	f	h	i	j	k	m	n	u	v
OFR-08	28	120	95	229	197	60	52.4	26.2	156	64	32	128	106	M10深20	M10深20
OFR-12	40	150	120	309	271	82	69.9	35.7	226	72	38	160	140	M12×1.25深24	M12×1.25深24

OFR-08	FL1-8-08P-10-JA-S4-J	FL1-8-08W-10-JA
OFR-12	FL1-12-12P-10-JA-S4-J	FL1-12-12W-10-JA

- (OFR-08 M10, OFR-12 M12 X 1.25)
-

ABT

Air bleed valves



-
- 0.14Mpa(104kgf/cm²)

ABT-03-10-JA-(S4)-J

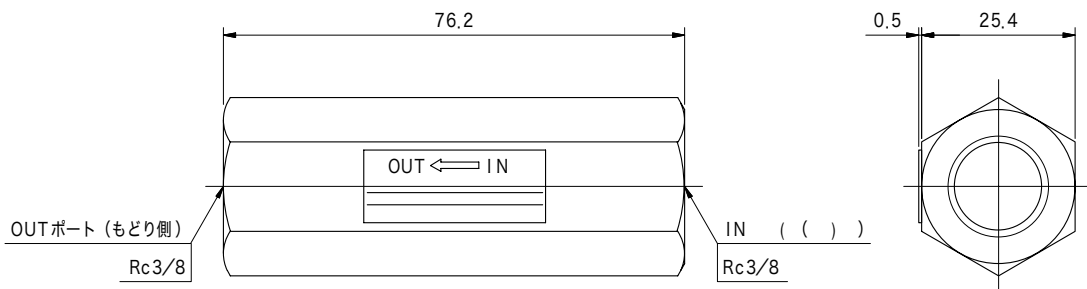
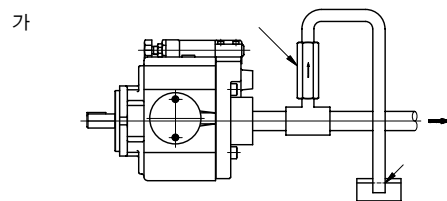
1 2 3 4

1
2
3
4

: 11 L/min
S4 : 0.3 L/min
S5 : 7 L/min

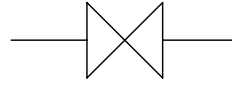
: 21Mpa(210kgf/cm²)
: 0.2 kg

- 가 가
- Return
- Non 가 Return



GT

Gauge cock



GT-3(M)

1 2 3

1
2

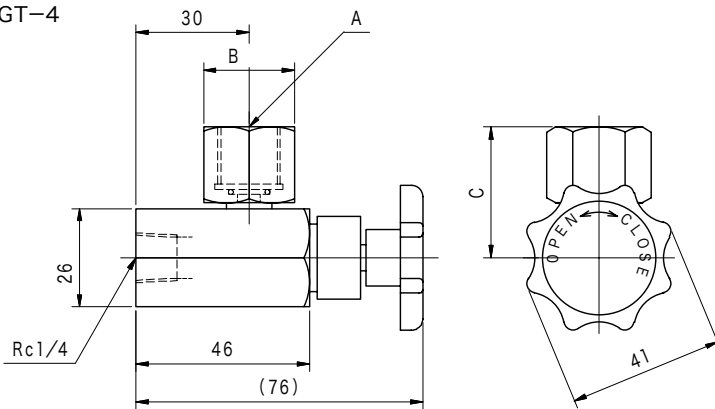
2: G1/4
3: G3/8
4: G1/2

3

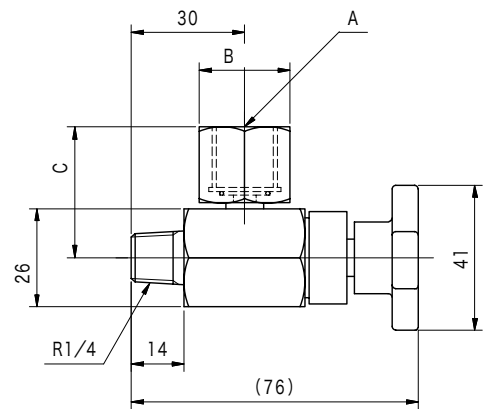
: Rc1/4
M: R1/4 (GT-3M, GT-4M)

: 28MPpa(280kgf/cm²)

GT-2
GT-3
GT-4



GT-3M
GT-4M



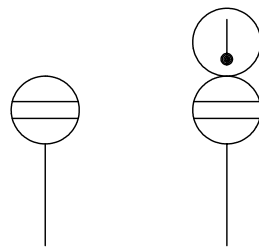
R
6

		A	B	C
GT-2	1/4	G1/4	21	34.5
GT-3	3/8	G3/8	24	34.5
GT-4	1/2	G1/2	29	37.5

		A	B	C
GT-3M	3/8	G3/8	24	34.5
GT-4M	1/2	G1/2	29	37.5

OLGT

Oil level indicators with thermometer



OLGT2-100

1 2 3

1

OLG:
OLGT:

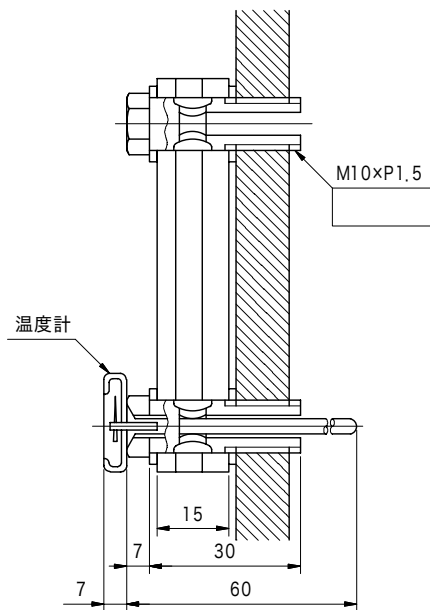
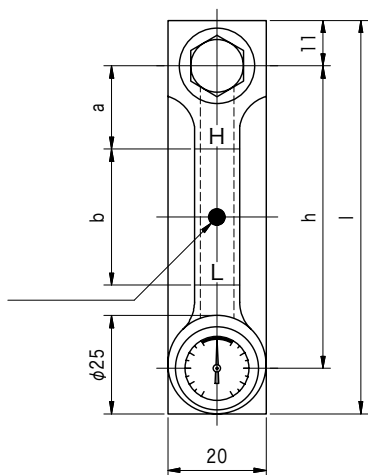
2

1: 1 (H)
2: 2 (H L)

3

100: 100 mm
200: 200 mm

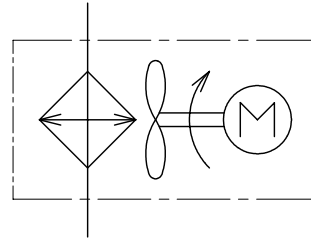
; 85°C
: 0°C~+100°C
: 17~19 N·m



	l	h	a	b
OLG(T) 1-100	122	100	20	—
OLG(T) 1-200	222	200	30	—
OLG(T) 2-100	122	100	20	40
OLG(T) 2-200	222	200	30	60

MF

Minifan coolers



가

MF-2-100V-30-01

- 1 2 3 4 5

1

2

2:MF-2

3:MF-3

3

100V:AC100 V 50/60 Hz

200V:AC200 V 50/60 Hz

4

30:MF-2

31:MF-3

32: ()

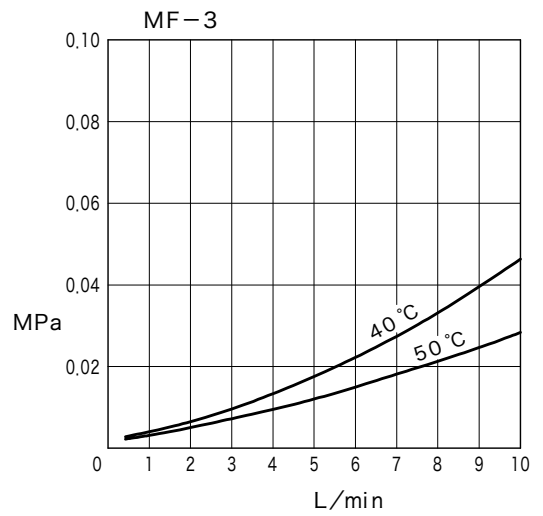
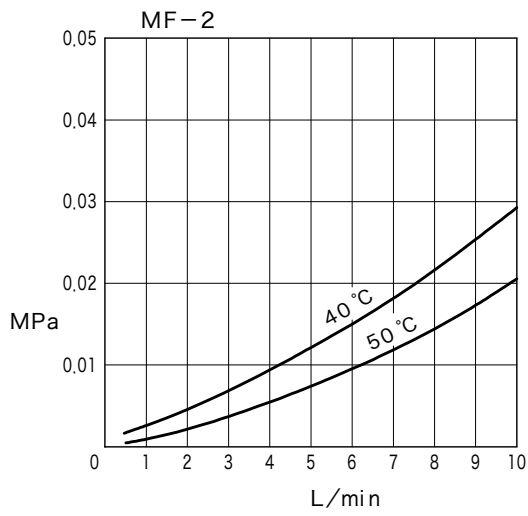
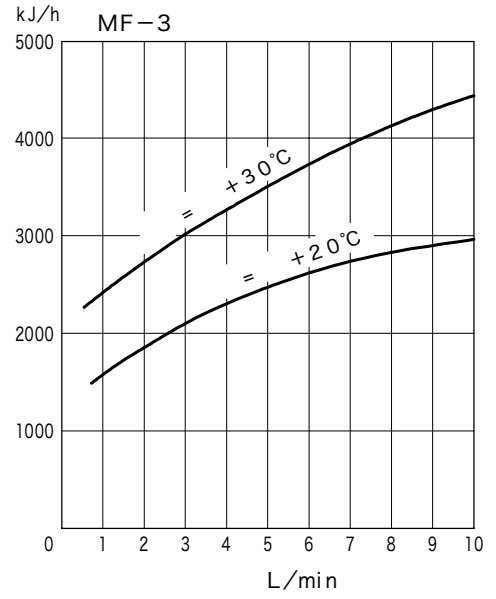
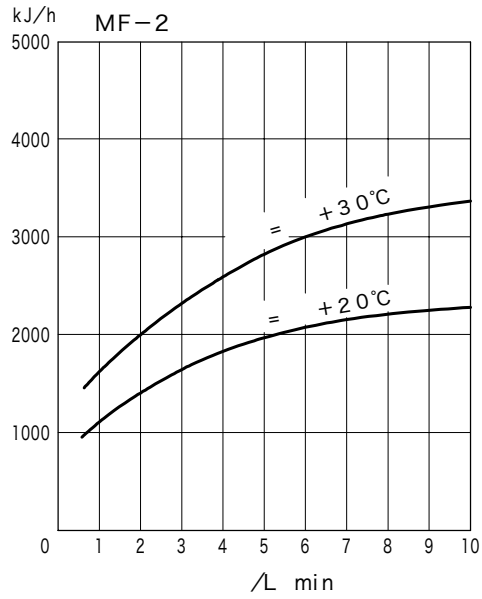
MF-2, MF-3

5

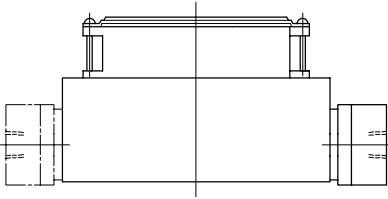
01:

02: 가
(MF-2)

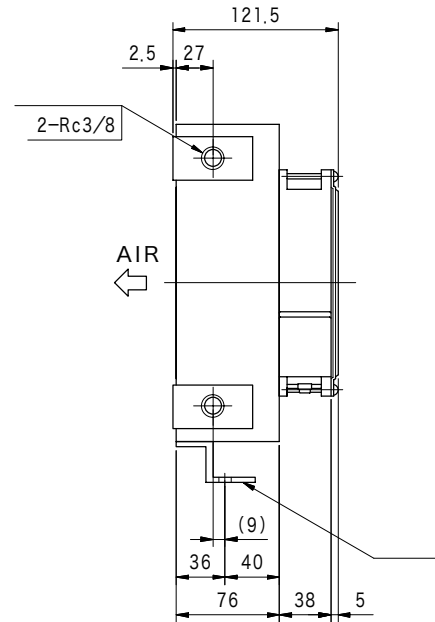
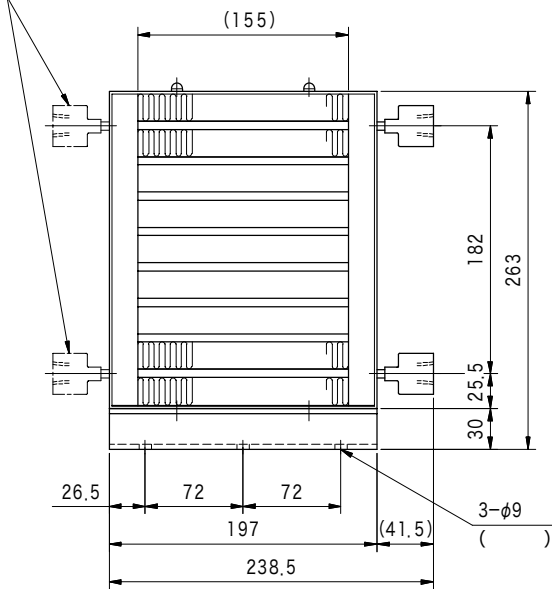
		MF-2	MF-3
		3.5 kg	5.5 kg
		1 MPa	
		100 V 50/60 Hz	50/48 W 0.62/0.52 A
		200 V 50/60 Hz	50/48 W 0.31/0.26 A
		0.5 mm ² 2	1 m



MF-2-***V-30/32-01/02



MF-2-***V-32-02



MF-3-***V-31/32-01

