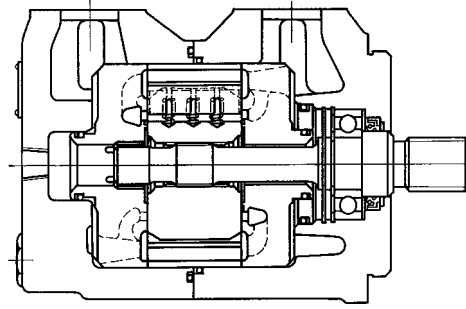
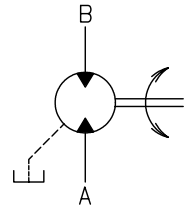




High speed vane motors



-
- 가



25M65A(2)-1C20-JA-J

- 1 2 3 4 5 6 7

1

25M
35M
45M
50M

2

25M: 42, 55, 65
35M: 80, 95, 115
45M: 130, 155, 185
50M: 220, 255, 300

3

A: SAE 4

4

:
2: foot

5

1:
11:

6

B ()
A: A ()
B: A () 90°
C: A ()
D: A () 90°

7

	cm ³ /rev		MPa	N·m	min ⁻¹	min ⁻¹	kg	
								foot
25M	42	44.0	15.7	103	2600	100	18	24
	55	57.7		135				
	65	68.7		162				
35M	80	83.6		196			29	35
	95	100		236				
	115	122		287				
45M	130	138		317	38.5	44.5		
	155	163		395				
	185	193		453				
50M	220	231		550	72	104		
	255	268		639				
	300	317		751				

	最高 回転数 min ⁻¹	最高 使用圧力 MPa
25M	3600	3.5
	3300	7
35M	2800	14
	2600	15.7
50M	2800	3.5
	2650	7
	2250	14
	2200	15.7

● A
● B
● 가 (1)
● 0.07MPa(0.7kgf/cm²)
(0.18MPa(108kgf/cm²))

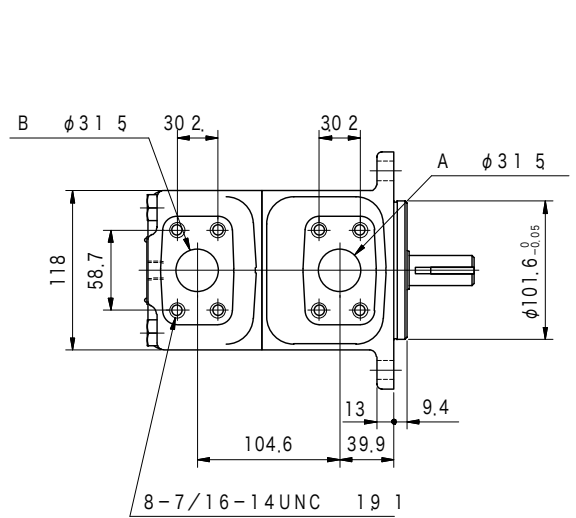
● 100min⁻¹
○ ()
○
○
● (N 2 Page)

((SAE J518c))

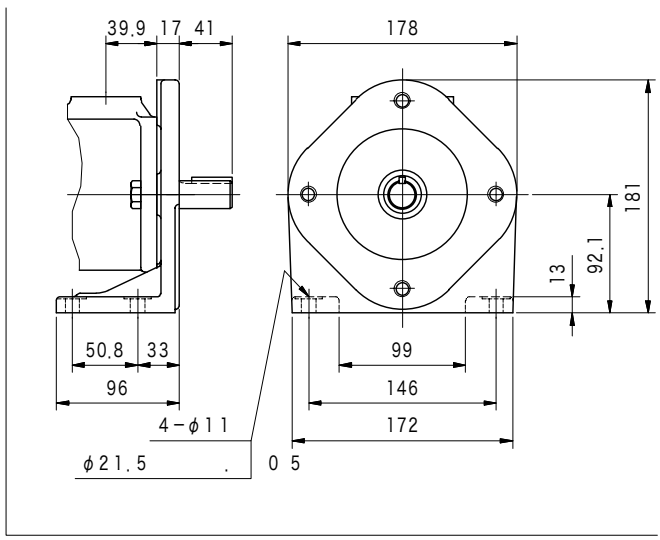
25M	1-1/4	FL1-10-10P-10-JA-S4-J FL1-10-10W-10-JA
35M	1-1/2	FL1-12-12P-10-JA-S4-J FL1-12-12W-10-JA
45M	2	FL1-16-16P-10-JA-S4-J FL1-16-16W-10-JA
50M	2-1/2	FL1-20-20P-10-JA-S4-J FL1-20-20W-10-JA

● ,0
● Q12Page
●

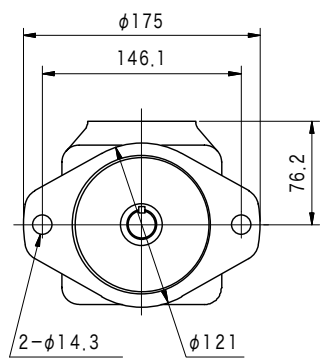
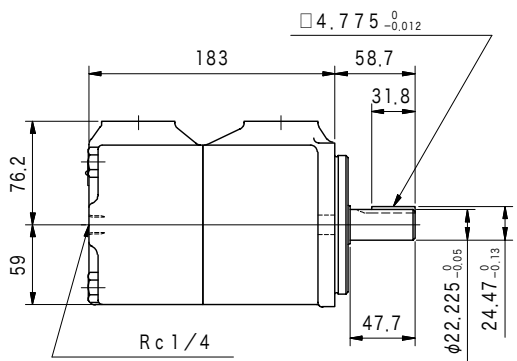
2 5 M



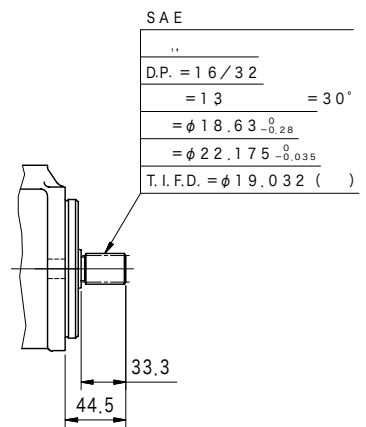
2 5 MFOOT



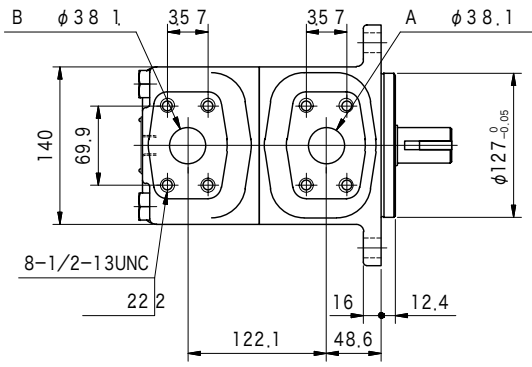
N
4
モーター(ベーン)



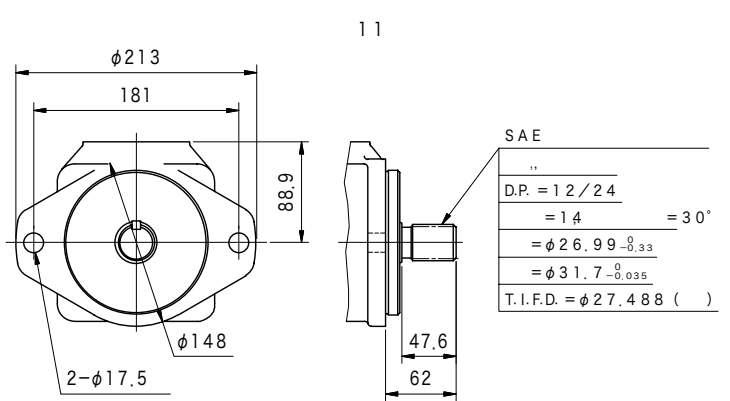
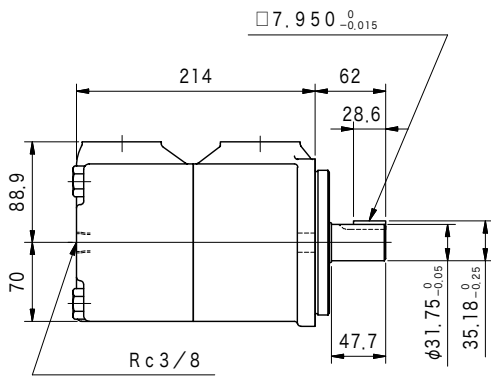
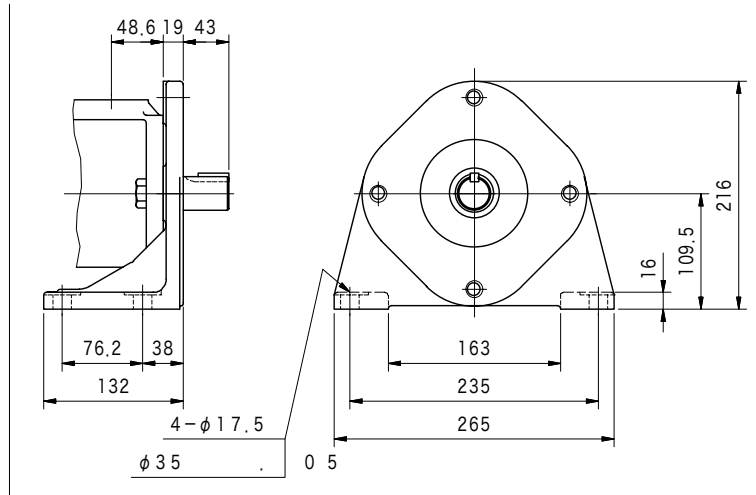
1 1



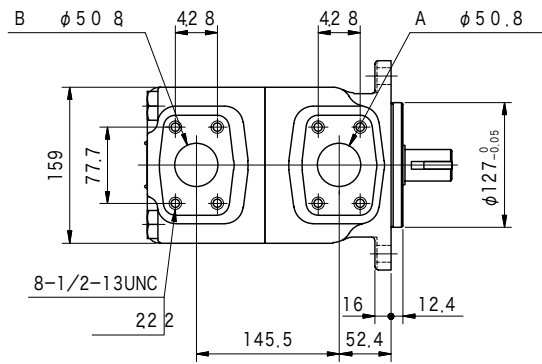
3 5 M



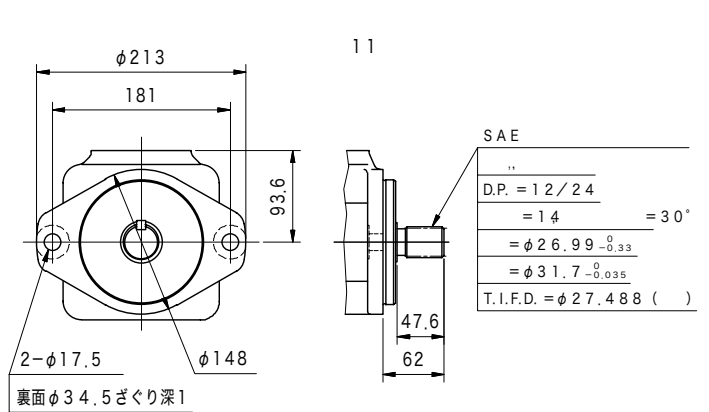
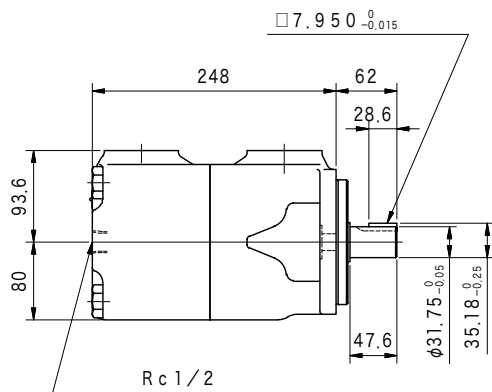
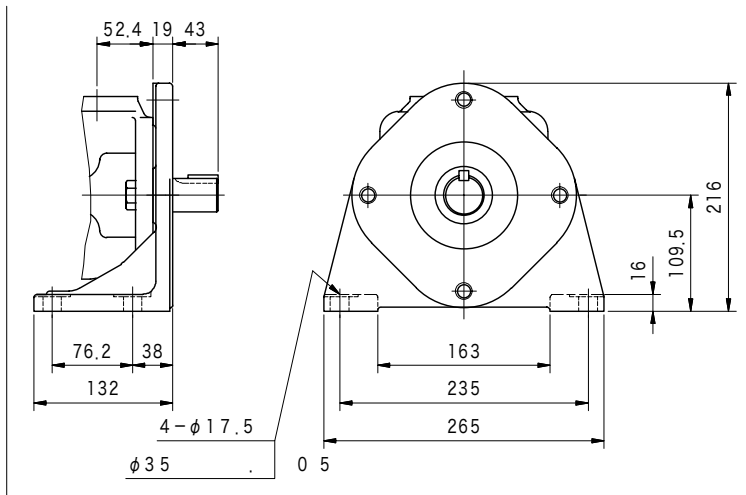
3 5 M FOOT



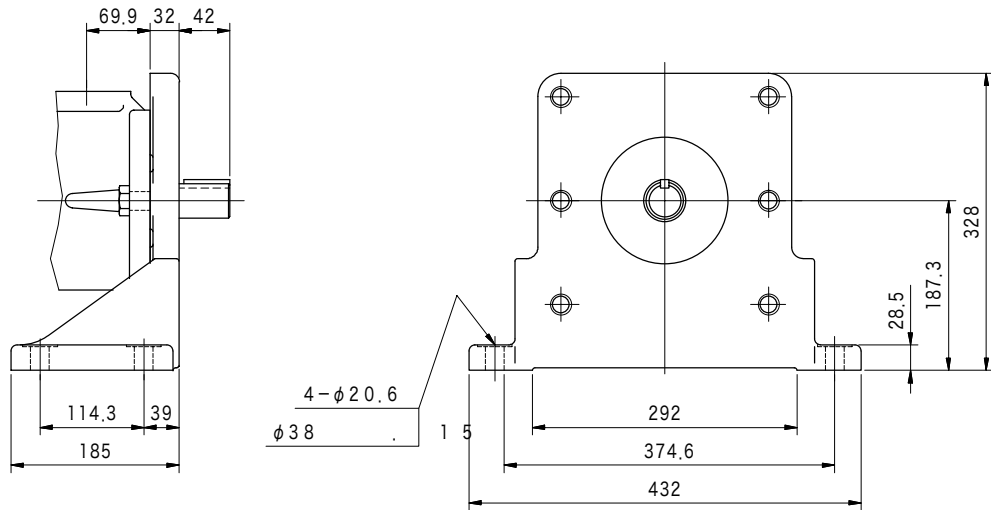
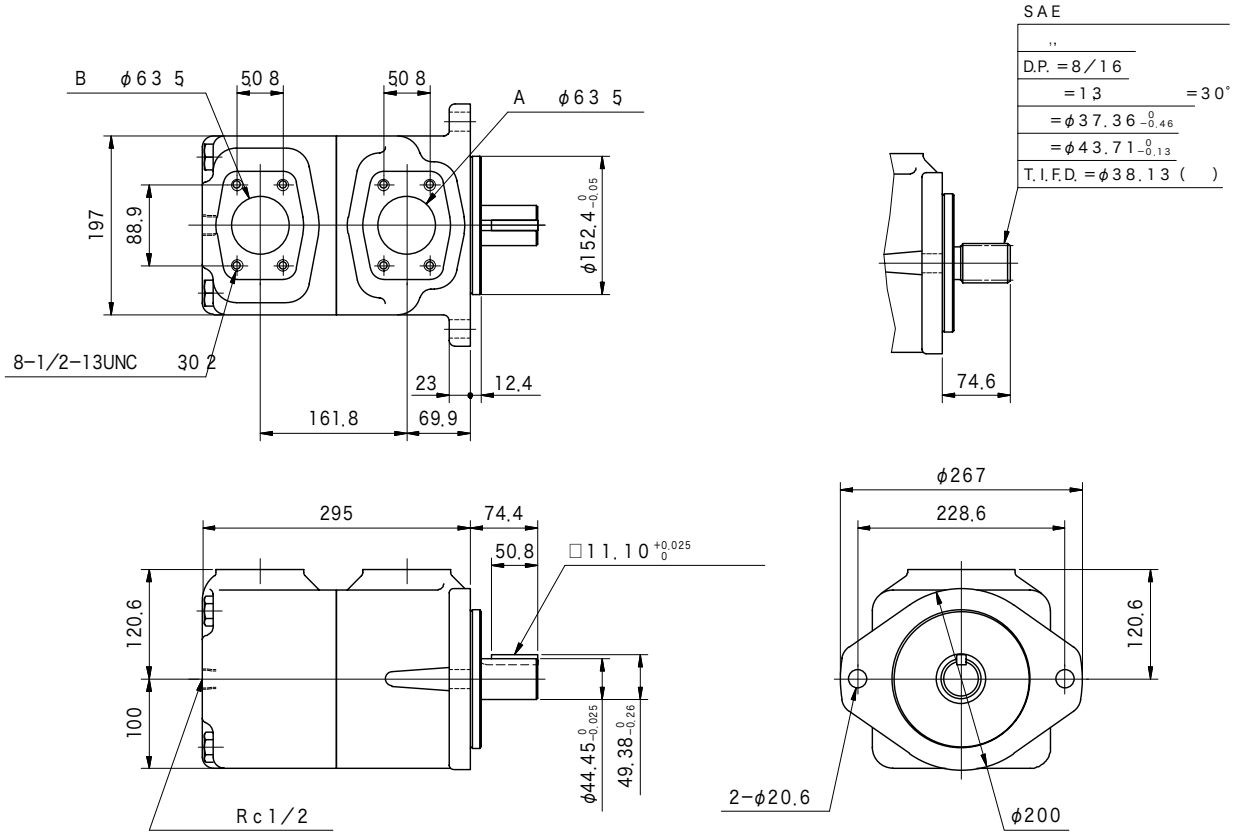
4 5 M

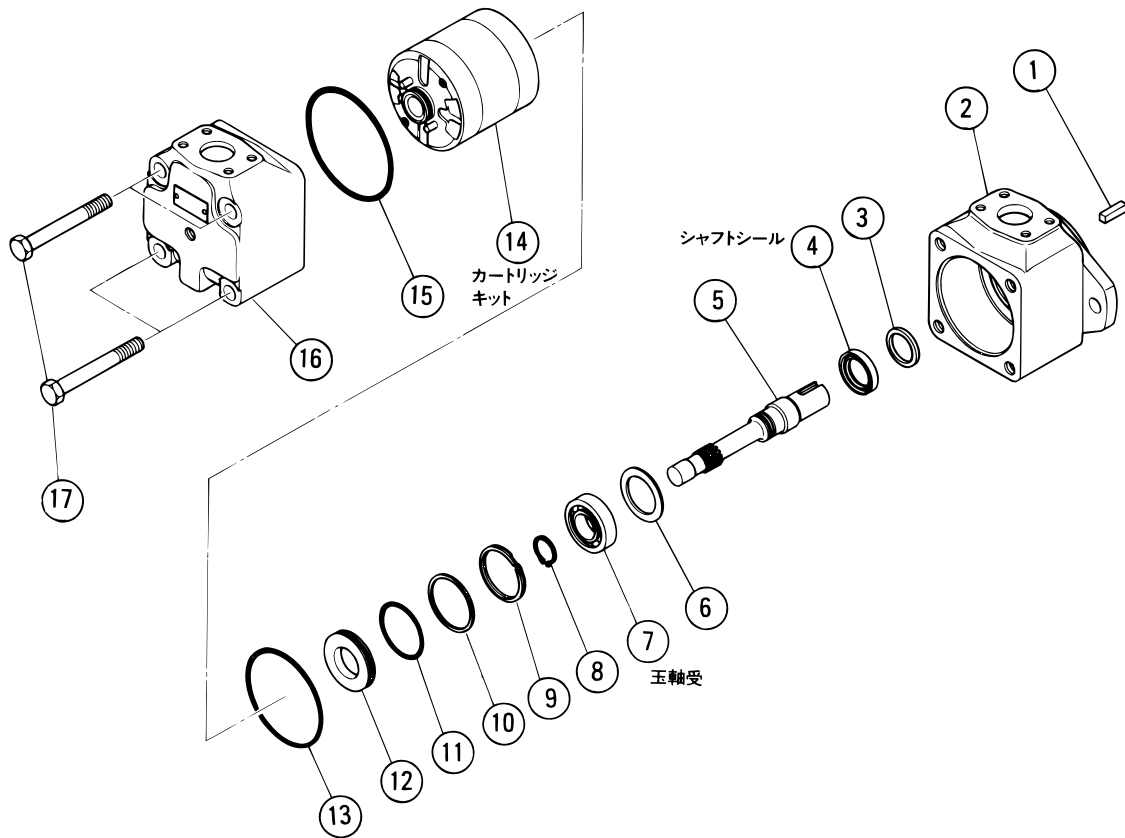


4 5 M FOOT



裏面 $\phi 34.5$ ざくり深 1





	25M		35M		45M		50M	
	VP923157A		VP923163A		VP923106A		VP923096A	
	VP191668		VP193428		VP195287		VP197412	
	007062051		007062061		007062071		007062081	
	42	VP923160A	80	VP923165A	130	VP923111A	220	VP923099A
	55	VP923161A	95	VP923166A	155	VP923110A	255	VP923100A
	65	VP923162A	115	VP923167A	185	VP923109A	300	VP923101A

() ●
●

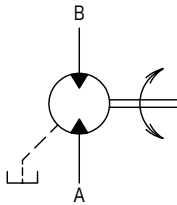
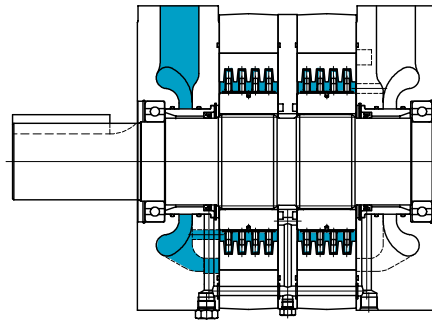
JIS B 1521

N
7

モータ(ベーン)

MHT

High torque low speed vane motors



10

가

가 가

MHT24-R1-12-JA-(S12)

1 2 3 4 5

1

2

「 」

3

R1: 四角キー付き平行軸

4

12: MHT24, 32, 70, 90

30: MHT50

35: MHT150, 190, 250, 380, 500, 750, 1000

5 特形番号

無記号: 両回転用(MHT24~90までに適用)

S12: 右回転専用(MHT150以上に適用)

(注) 左回転用モータについてはお問合せください。

N
8

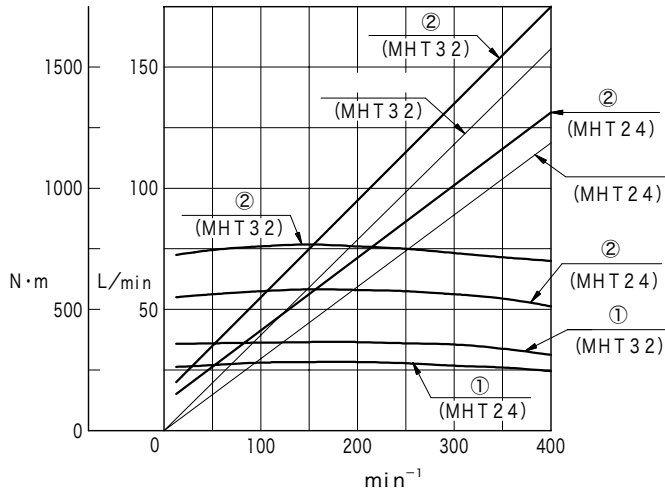
モータ(ベーン)

	cm ³ /rev	MPa	(0.7 MPa) N·m	min ⁻¹		kg
MHT24	298	14	33	10	400	55
MHT32	398		44		400	55
MHT50	620		69		350	95
MHT70	868		97		300	110
MHT90	1116		124		300	110
MHT150	1860		207		250	165
MHT190	2360		263		200	240
MHT250	3100		346		200	240
MHT380	4720		526		200	335
MHT500	6200		691		200	335
MHT750	9300		1036		100	420
MHT1000	12400		1381		75	505

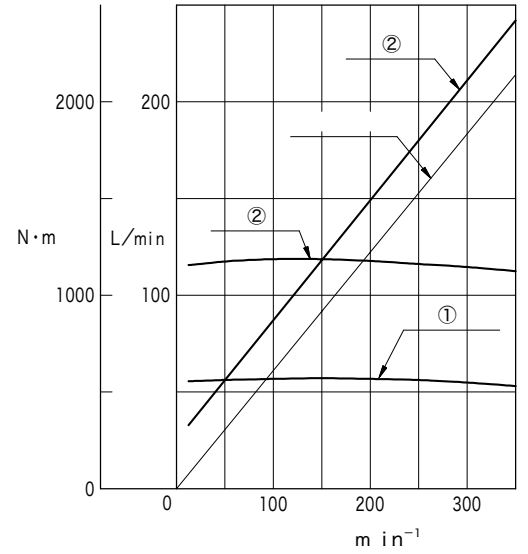
(25 mm²/s(cSt))

① : 7 MPa(70kgf/cm²) ② : 14 MPa(140kgf/cm²)

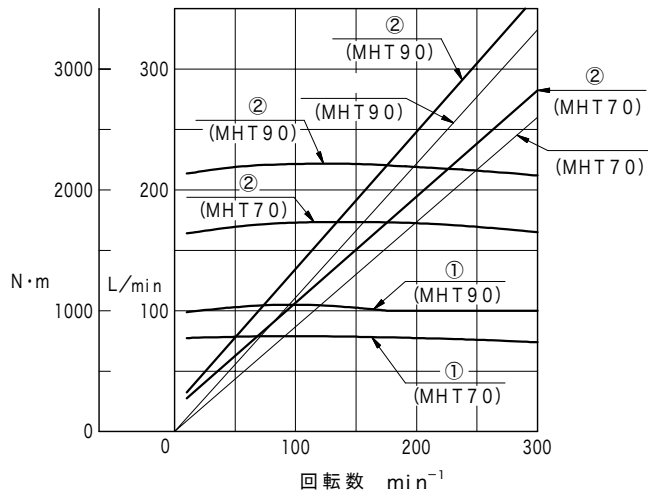
MHT 24/MHT 32



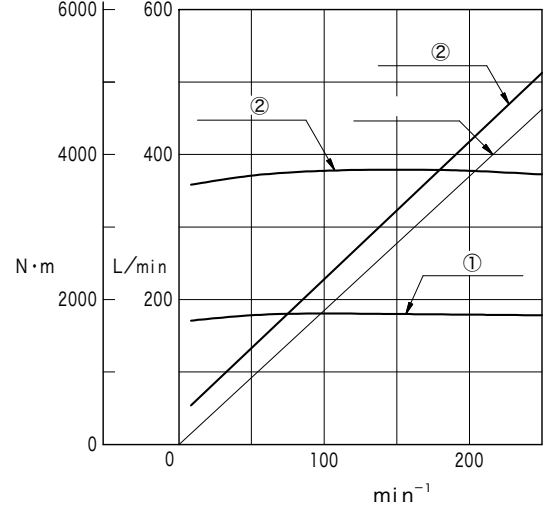
MHT 50



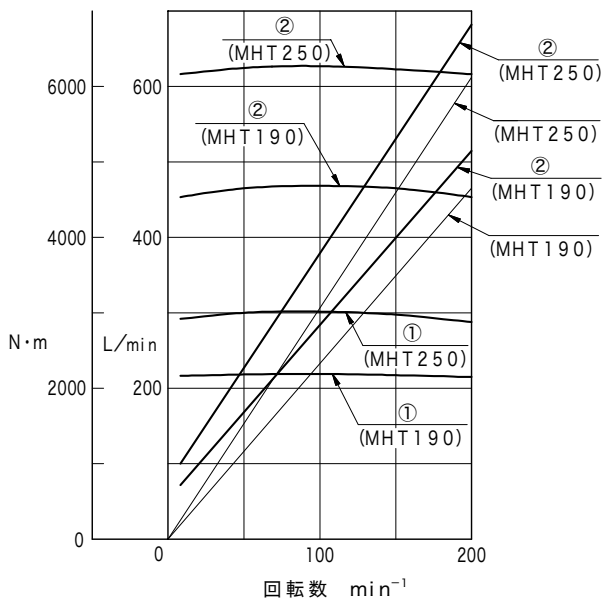
MHT 70/MHT 90



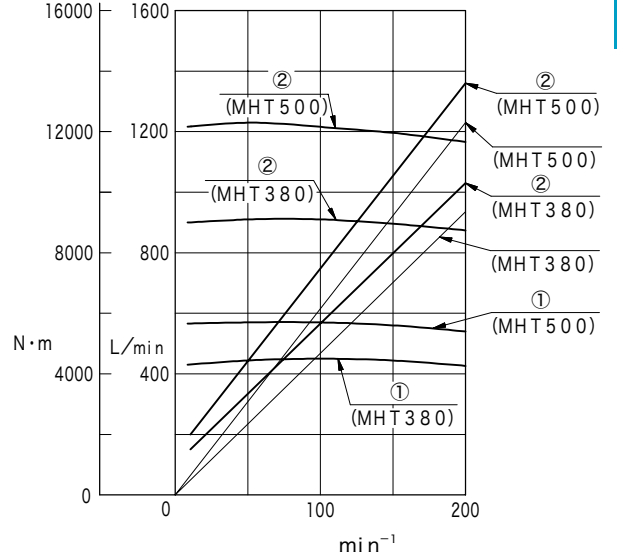
MHT 150



MHT 190/MHT 250



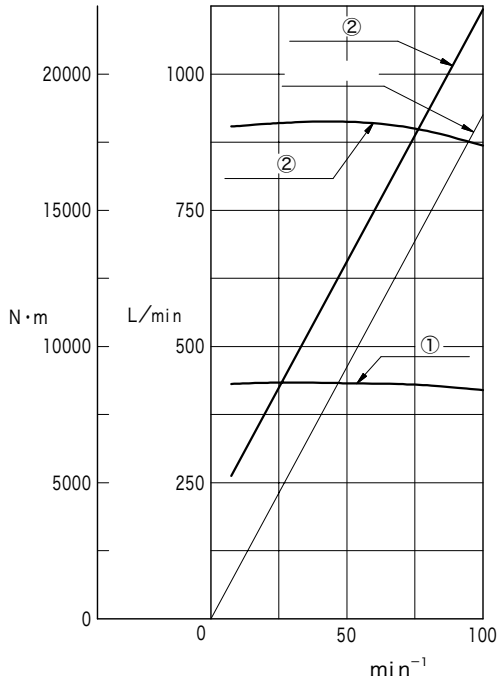
MHT 380/MHT 500



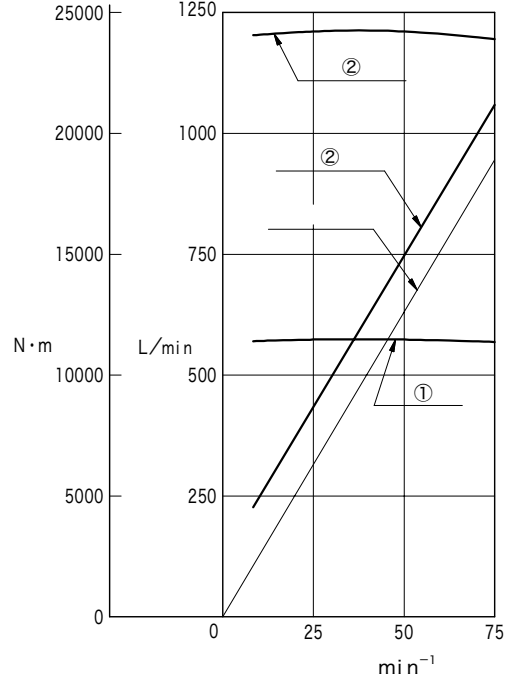
(25 mm²/s(cSt))

① : 7 MPa(70kgf/cm²) ② : 14 MPa(140kgf/cm²)

MHT 750



MHT 1000



- 6 ()
- MHT 24~90 가 MHT 150

MHT24	B	A	A	B
MHT32				
MHT50				
MHT70	A	B	B	A
MHT90				
MHT150				
MHT190				
MHT250				
MHT380	A	B	—	—
MHT500				
MHT750				
MHT1000				

- ()
- 0.17MPa(107kgf/cm²)
- 3.5MPa(35kgf/cm²) 50

	cm ³ /min		cm ³ /min
MHT24	200	MHT190	200
MHT32		MHT250	
MHT50		MHT380	380
MHT70		MHT500	
MHT90		MHT750	
MHT150	MHT1000	760	

- 28°C 가 가
- min⁻¹) 가 28°C 가 가 (50
- 가
- (N2Page)

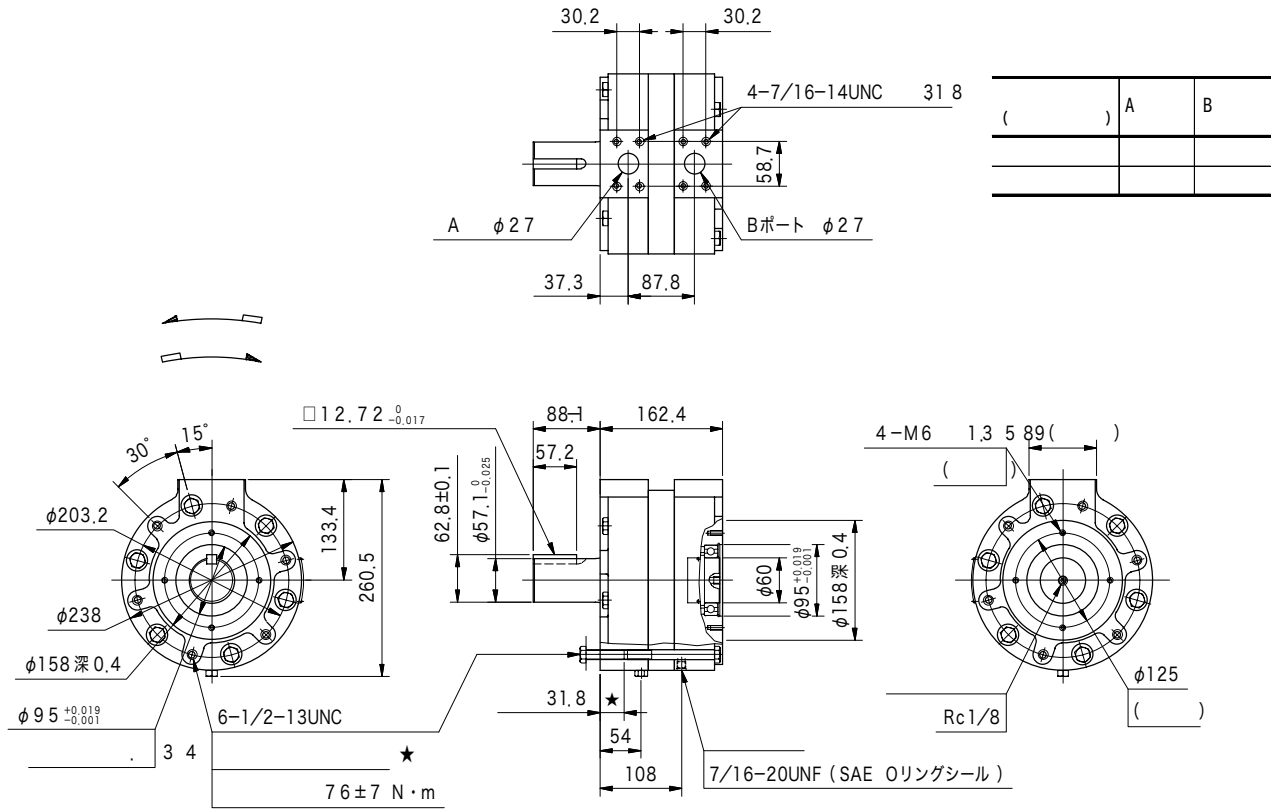
(「SAEJ518c

MHT24	1-1/4	FL1-10-10P-10-JA-S4-J	FL1-10-10W-10-JA
MHT32			
MHT50			
MHT70	1-1/2	FL1-12-12P-10-JA-S4-J	FL1-12-12W-10-JA
MHT90			
MHT150	2	FL1-16-16P-10-JA-S4-J	FL1-16-16W-10-JA
MHT190	2-1/2	FL1-20-20P-10-JA-S4-J	FL1-20-20W-10-JA
MHT250			
MHT380			
MHT500			
MHT750			
MHT1000			

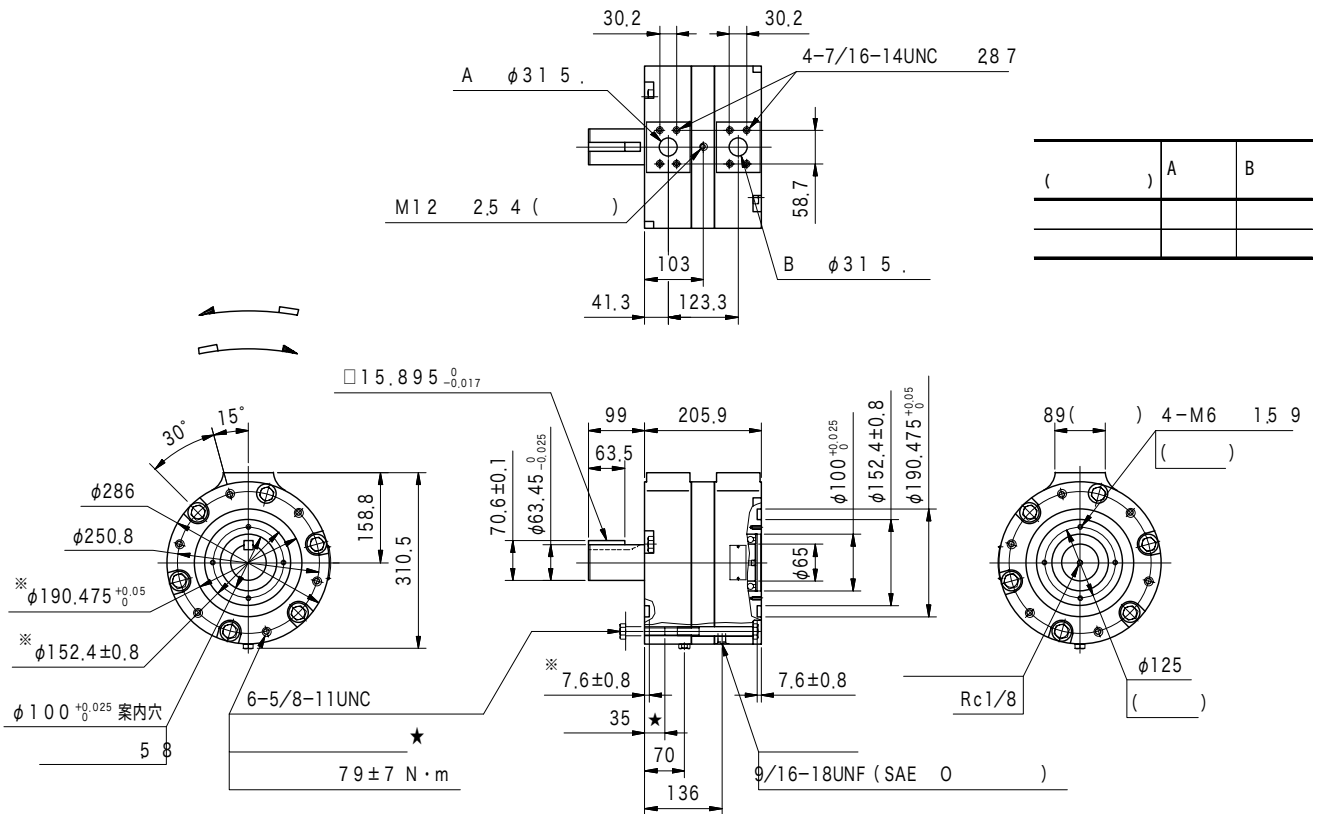
- 0
-
- Q12 Page

N10 모터(베어링)

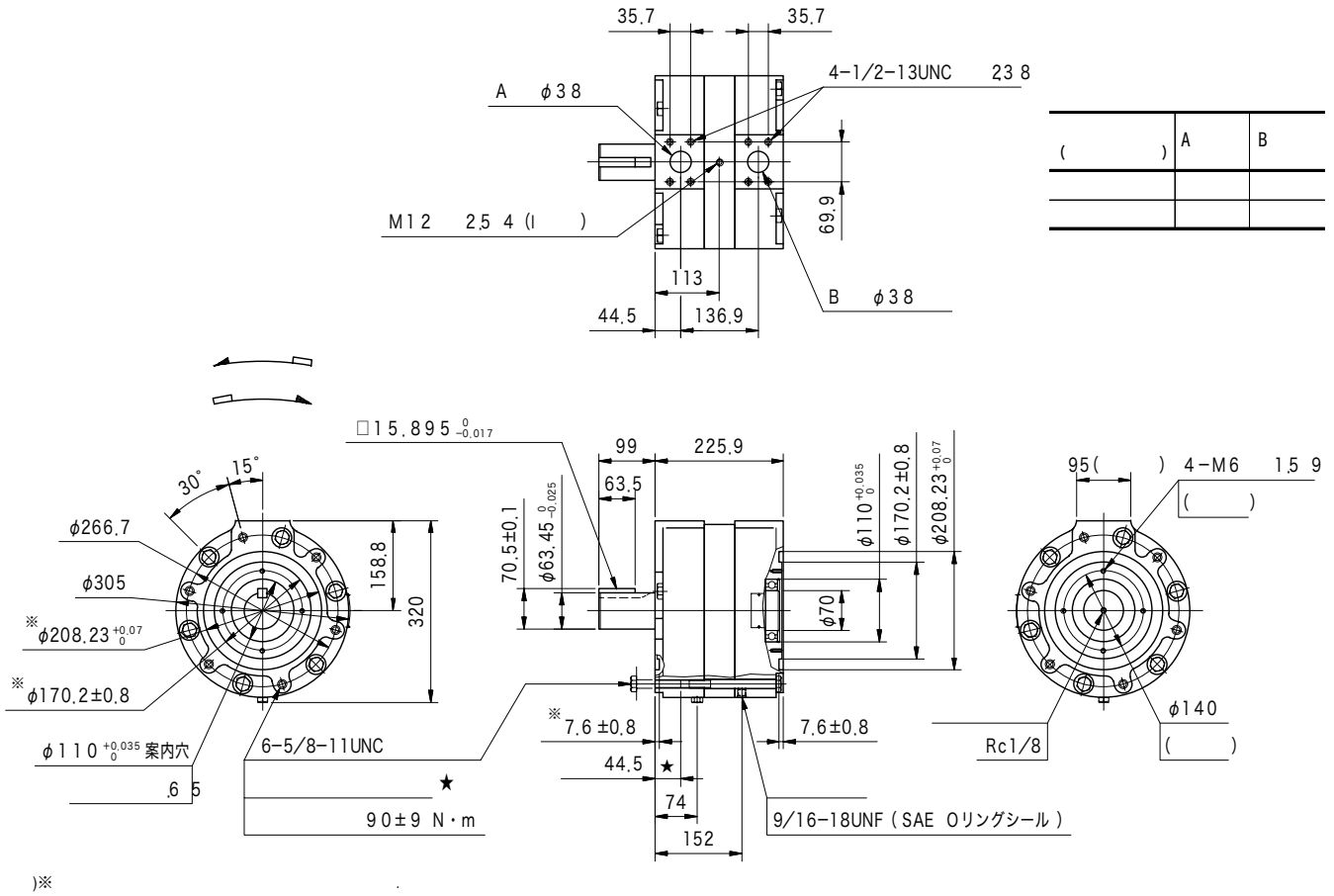
MHT24-R1-12-JA
MHT32-R1-12-JA



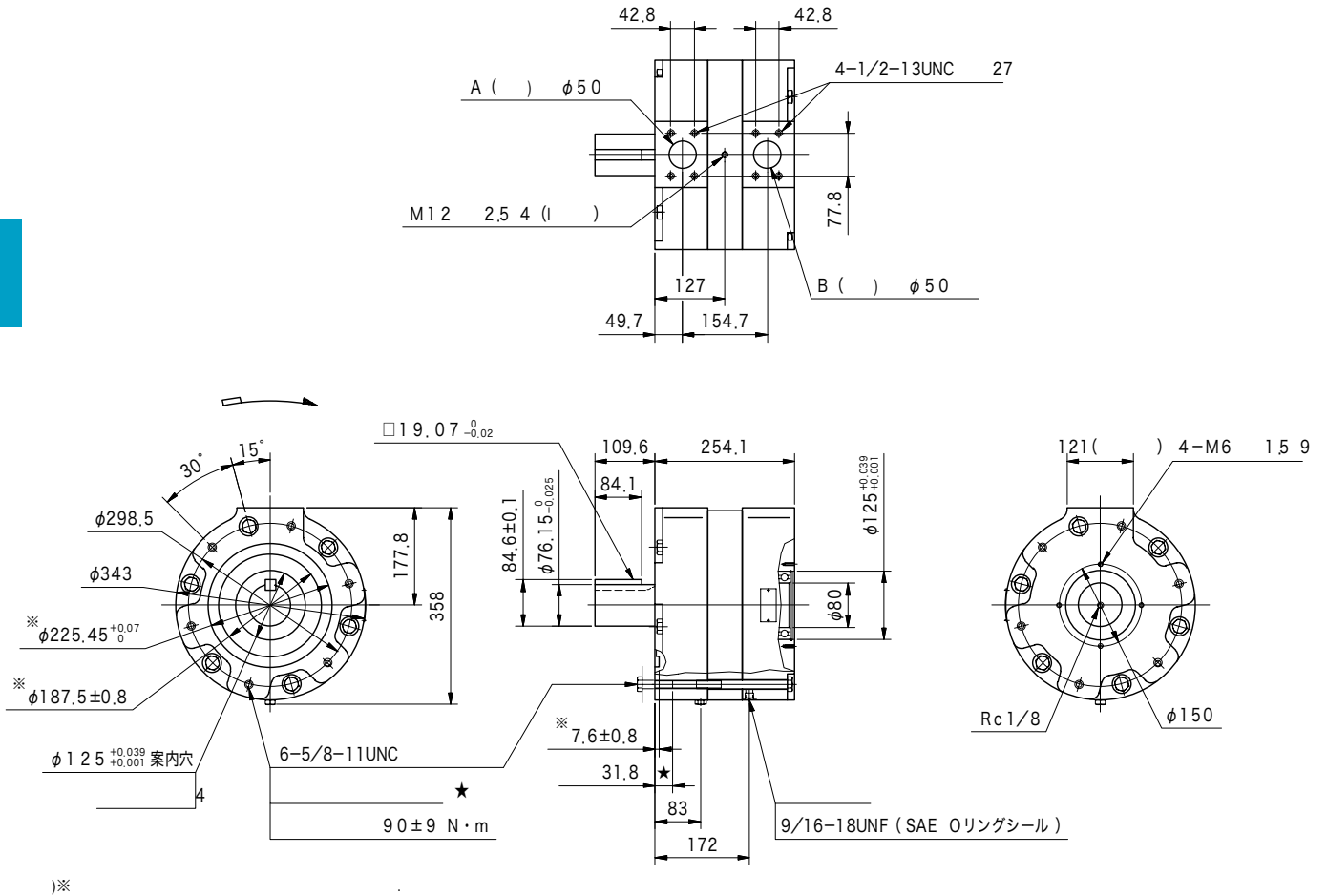
MHT50-R1-30-JA



MHT70-R1-12-JA
MHT90-R1-12-JA



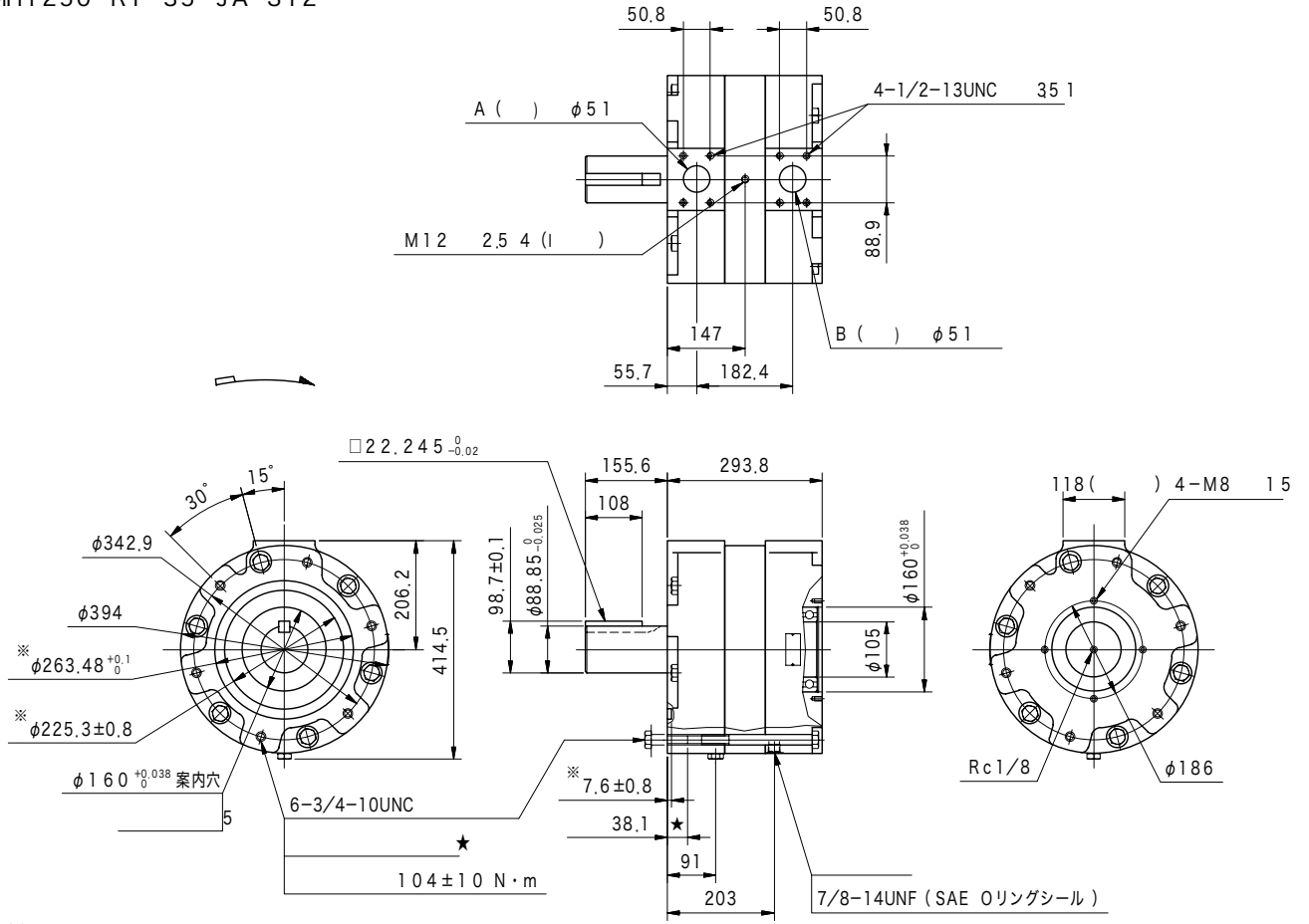
MHT150-R1-35-JA-S12



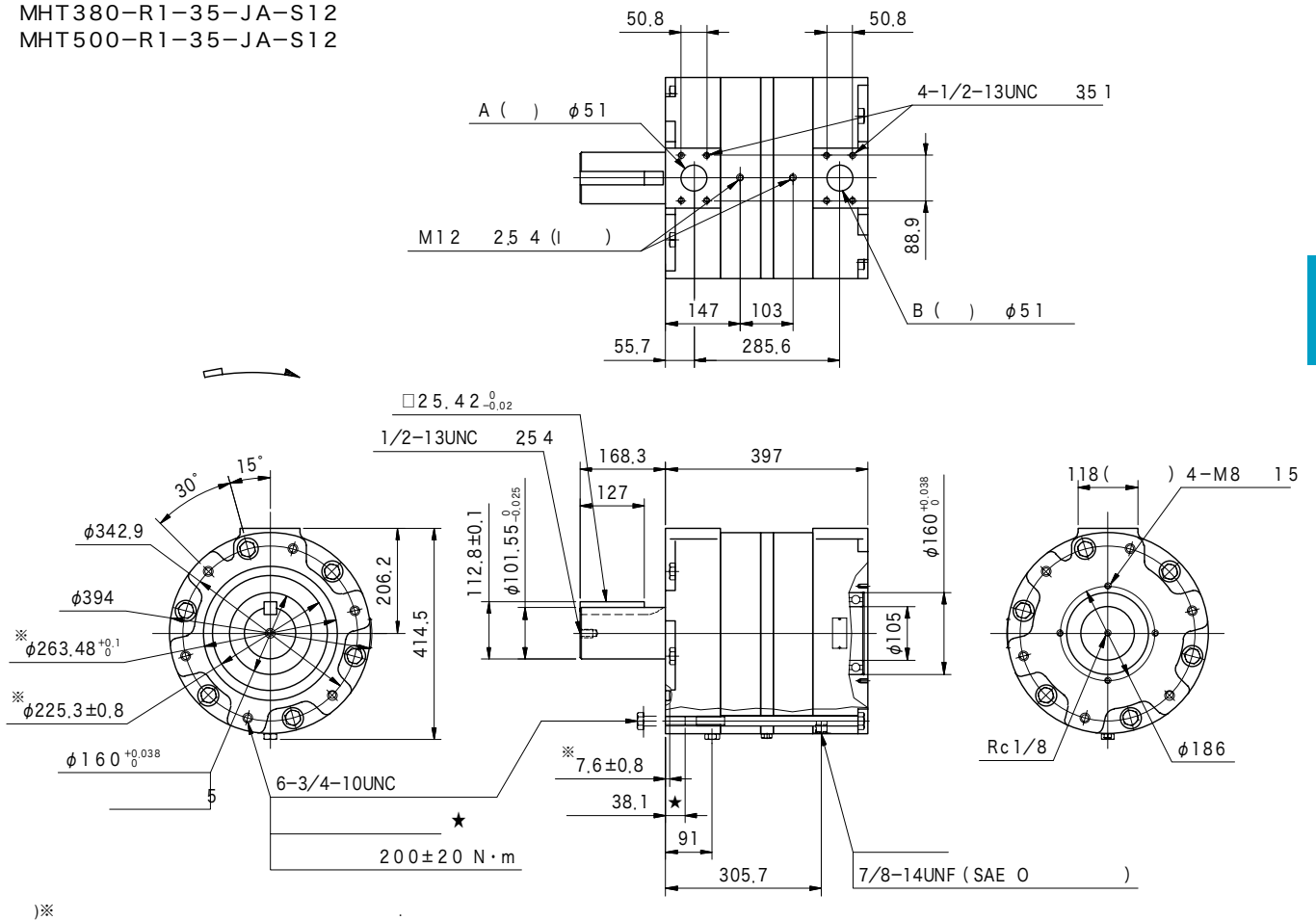
N
12

モータ(ベーン)

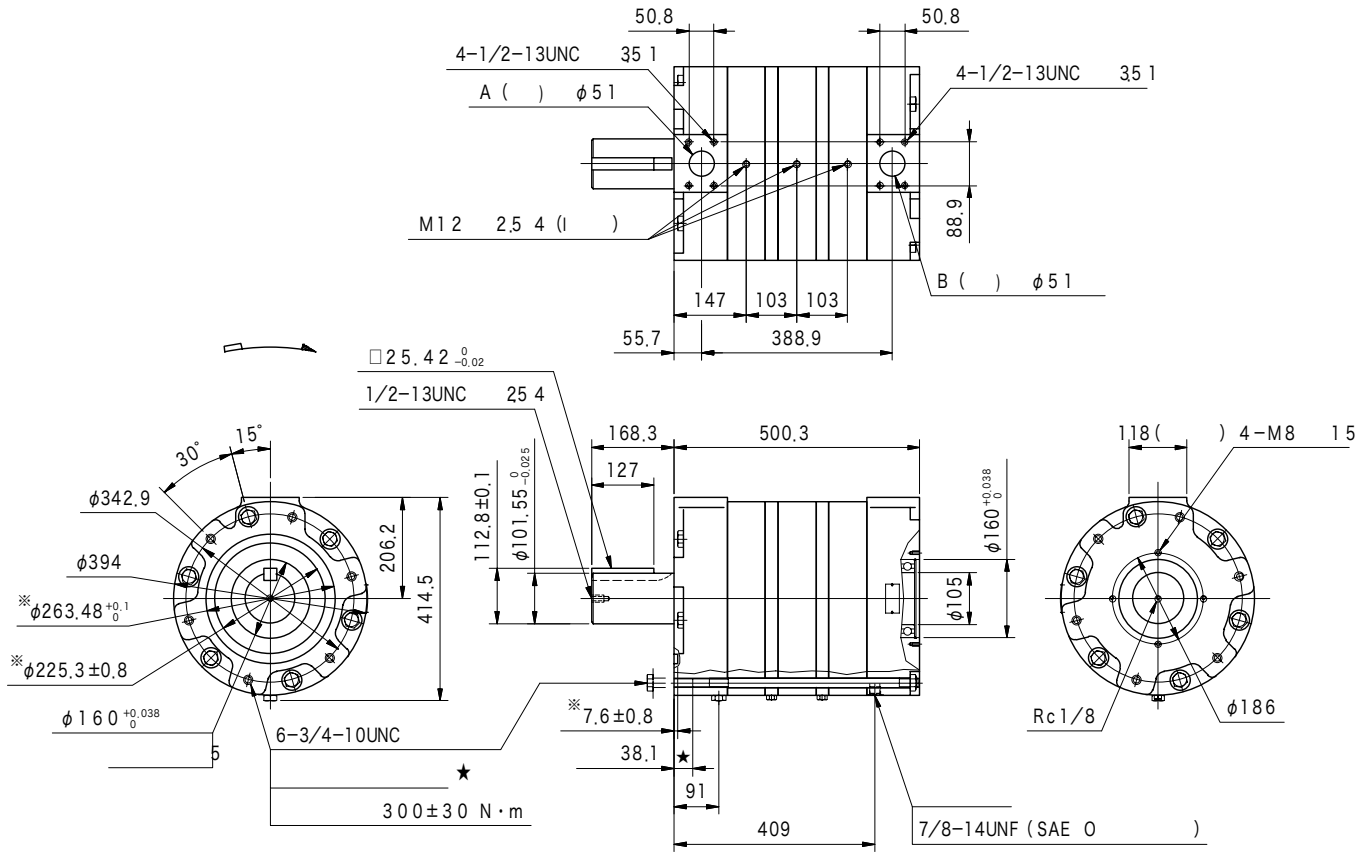
MHT190-R1-35-JA-S12
 MHT250-R1-35-JA-S12



MHT380-R1-35-JA-S12
 MHT500-R1-35-JA-S12

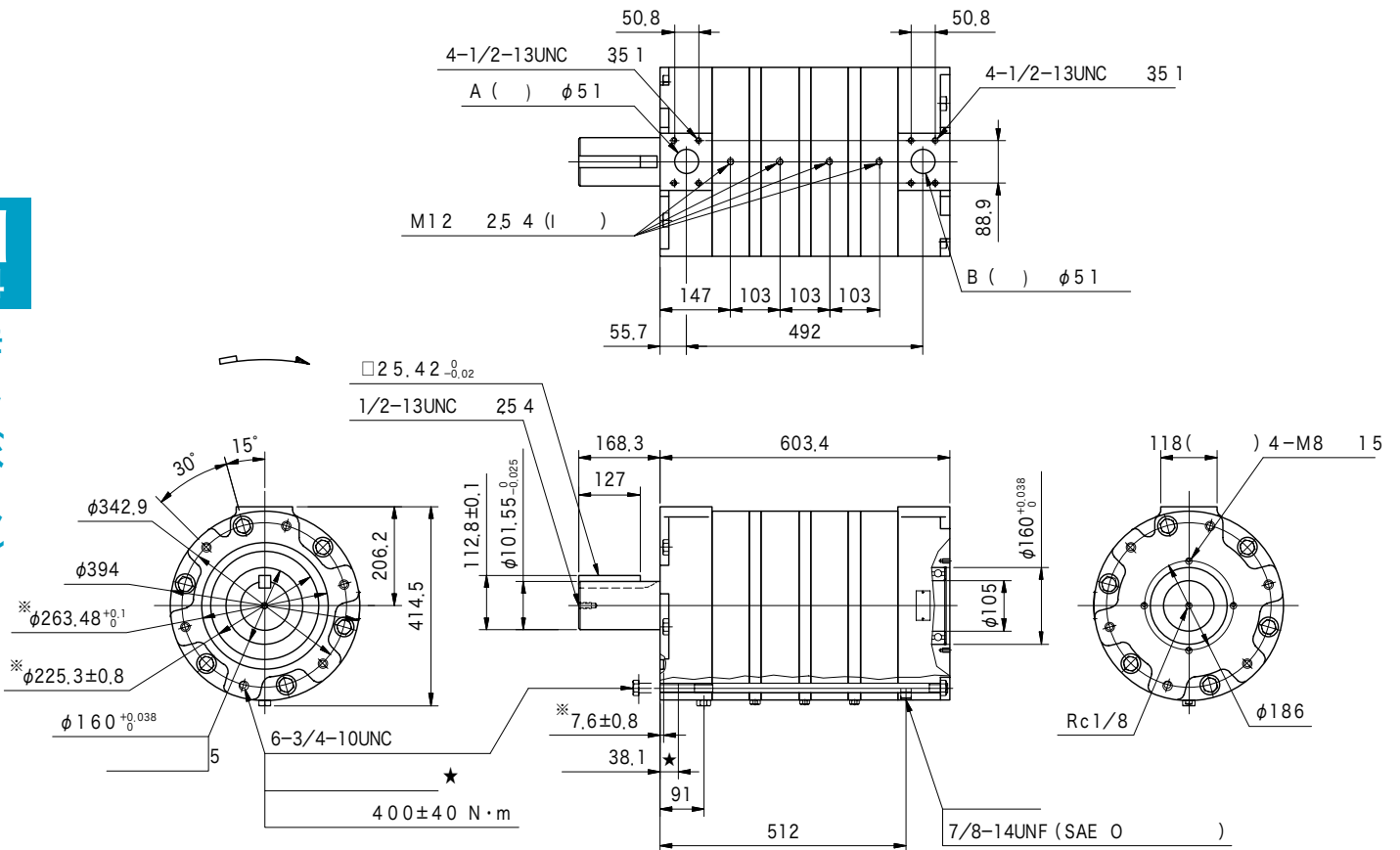


MHT750-R1-35-JA-S12



)※

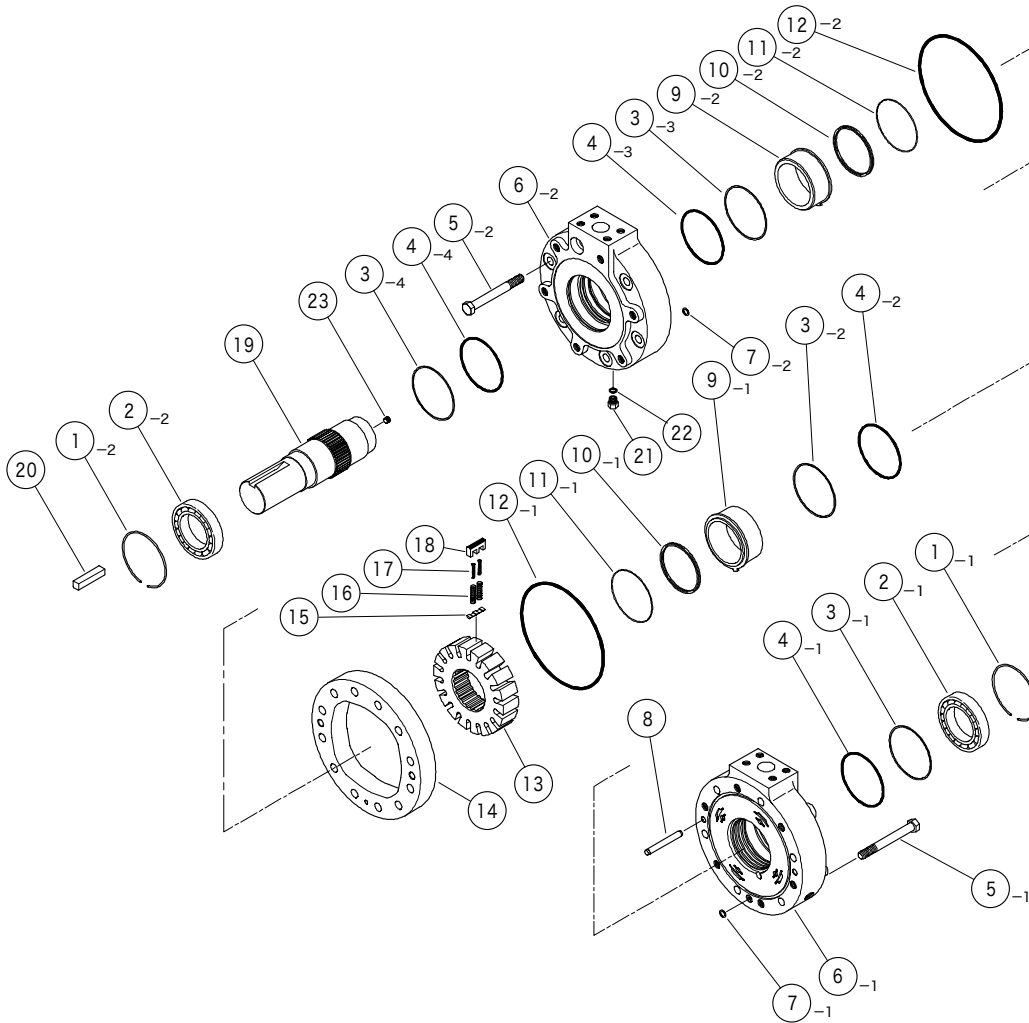
MHT1000-R1-35-JA-S12



)※

MHT24~MHT90

MHT24				
2	玉軸受	40012193	JIS B 1521 6012ZZ	2
3		VA15590		4
4	O	007915319	AS568-153 (NBR, Hs90)	4
7	O	007901219	AS568-012 (NBR, Hs90)	2
10	X	VP429290		2
12	O	007926219	AS568-262 (NBR, Hs90)	2
22	O	007990419	AS568-904 (NBR, Hs90)	1



) MHT24-R1-12-JA

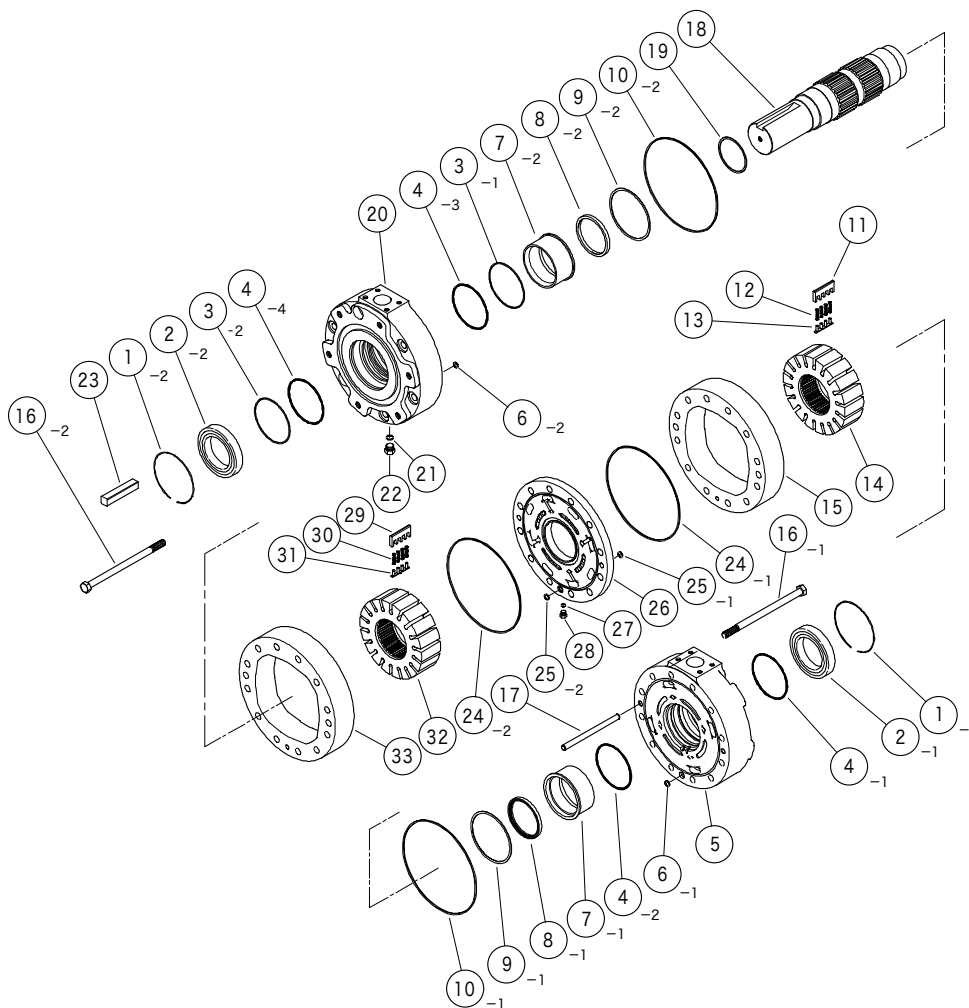
MHT50				
2	玉軸受	40012194	JIS B 1521 6013ZZ	2
3		VA15596		4
4	O	007923919	AS568-239 (NBR, Hs90)	4
7	O	007911219	AS568-112 (NBR, Hs90)	2
10	X	VP427689		2
12	O	007926819	AS568-268 (NBR, Hs90)	2
22	O	007990619	AS568-906 (NBR, Hs90)	1

MHT70				
2	玉軸受	40012195	JIS B 1521 6014ZZ	2
3		VA15591		4
4	O	007924119	AS568-241 (NBR, Hs90)	4
7	O	007911219	AS568-112 (NBR, Hs90)	2
10	X	VP429291		2
12	O	007927119	AS568-271 (NBR, Hs90)	2
22	O	007990619	AS568-906 (NBR, Hs90)	1

MHT150~MHT1000-S12

MHT150

2	玉軸受	40012196	JIS B 1521 6016ZZ	2
3		VA15593	—	2
4	O	007924619	AS568-246 (NBR, Hs90)	4
6	O	007911219	AS568-112 (NBR, Hs90)	2
8		VA3107	—	2
10		40012879	—	2
21	O	007990619	AS568-906 (NBR, Hs90)	1



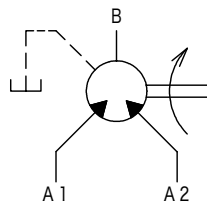
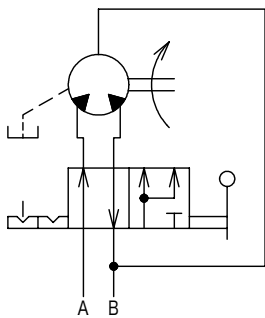
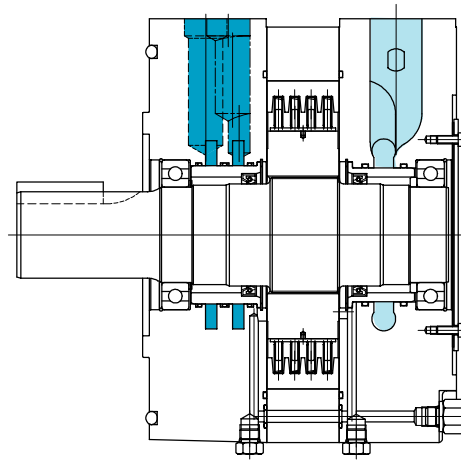
・ MHT380/500-R1-35-JA-S12

- ・ MHT150~MHT250 ②④~③③
- ・ MHT750 ②④~③③ 2
- ・ MHT1000 ②④~③③ 3

MHT190 MHT250 MHT380 MHT500 MHT750 MHT1000				MHT190	MHT380	MHT750	MHT1000
				MHT250	MHT500		
2	玉軸受	40012197	JIS B 1521 6021ZZ	2	2	2	2
3		VA15595	—	2	2	2	2
4	O	007925419	AS568-254 (NBR, Hs90)	4	4	4	4
6	O	007911419	AS568-114 (NBR, Hs90)	2	2	2	2
8		VA30972	—	2	2	2	2
10		40012880	—	2	2	2	2
21	O	007991019	AS568-910 (NBR, Hs90)	1	1	1	1
24		40012880	—	—	2	4	6
25	O	007911419	AS568-114 (NBR, Hs90)	—	2	4	6
27	O	007990619	AS568-906 (NBR, Hs90)	—	1	2	3

() MHT

High torque low speed vane motors (multi-torque type)



10

가

가

가가

MHT500/250/250-R1-35-JA-S12(9)

1 2 3 4 5 6 7

1

2

24, 32, 50, 70, 90, 150, 190, 250, 380, 500, 750, 1000

3

「 」

4

R1: ()

5

JA-12: MHT24, 32

15-JA: MHT70, 90

JA-30: MHT50

35-JA: MHT150, 190, 250, 380, 500, 750(2), 1000(2)

JA-35: MHT750(4), 1000(3)

6

() (MHT50/25/25)

S12: ()

7

()

8: (MHT70/45/25)

9: (MHT70/45/25)

() MHT750/625/500/375, MHT1000/750/500

●

DMHT500-2-10-JA

1 2 3 4

1 MHT

2

	32	50	90	150	250	500	750	1000
(MHT24 MHT32	MHT50	MHT70 MHT90	MHT150	MHT190 MHT250	MHT380 MHT500	MHT750	MHT1000

3

2: 2

3: 3 (4)

4

250, 500, 750(2), 1000(2) 가
「10-JA-S1」 750(3), 1000(3)
가 JA-10-S3」

N
17

モーター(ベーン)

		cm ³ /rev		0.7 MPa(7kgf/cm ²)					min ⁻¹		kg	
				N·m		MPa						
				分割トルク		分割トルク						

2

MHT24/12/12	JA-12	298	149	33	16.5	14	10	400	55	13
MHT32/16/16	JA-12	398	199	44	22			400	55	13
MHT50/25/25	JA-30	620	310	69	34.5			350	95	24
MHT70/35/35	15-JA	868	434	97	48.5			300	110	26.5
MHT90/45/45	15-JA	1116	558	124	62			300	110	26.5
MHT150/75/75	35-JA	1860	930	207	104			250	165	30
MHT190/95/95	35-JA	2360	1180	263	131			200	240	38
MHT250/125/125	35-JA	3100	1550	346	173			200	240	38
MHT380/190/190	35-JA	4720	2360	526	263			200	335	39
MHT500/250/250	35-JA	6200	3100	690	345			200	335	39
MHT750/375/375	35-JA	9300	4650	1040	520			100	420	40
MHT1000/500/500	35-JA	12400	6200	1380	690			75	505	41

3

MHT70/45/25	15-JA	868	558	310	97	62	34.5	14	10	300	110	26.5
MHT1000/750/500	JA-35	12400	9300	6200	1380	1040	690			150	560	81

4

MHT750/625/500/375	JA-35	9300	7750	6200	4650	1040	860	690	520	14	10	150	470	79
--------------------	-------	------	------	------	------	------	-----	-----	-----	----	----	-----	-----	----

● 3, 4

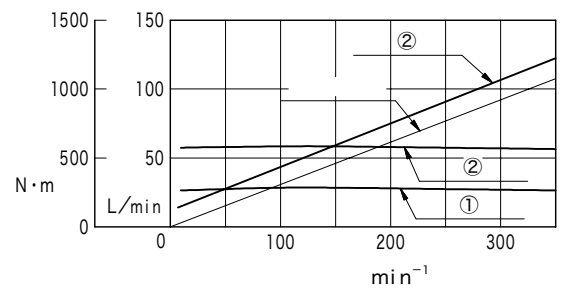
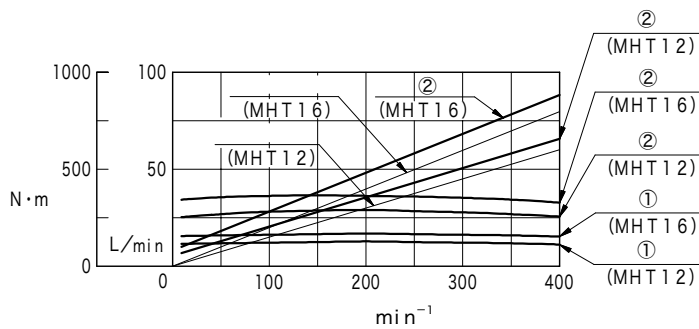
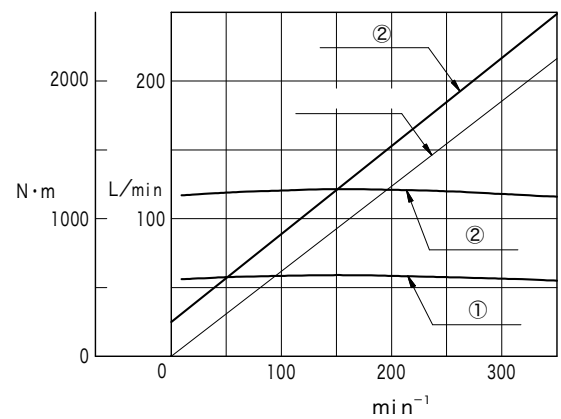
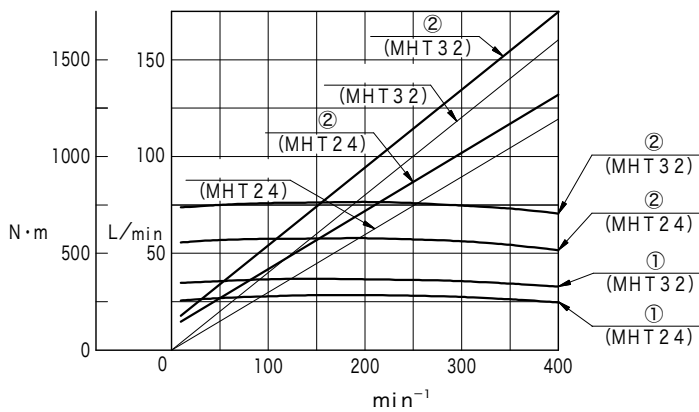
(25 mm²/s(cSt))

① : 7 MPa(kgf/cm²) ② : 14 MPa(kgf/cm²)

2

MHT 24/12/12
MHT 32/16/16

MHT 50/25/25



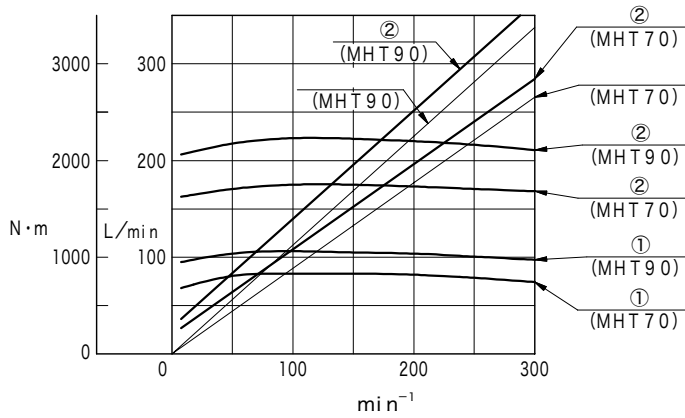
N
18

モータ(ベーン)

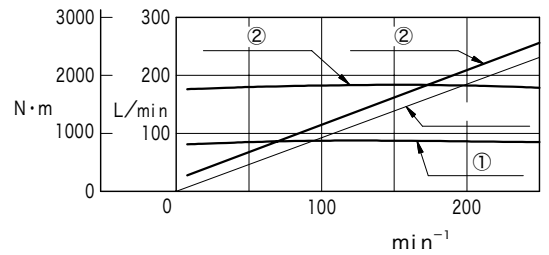
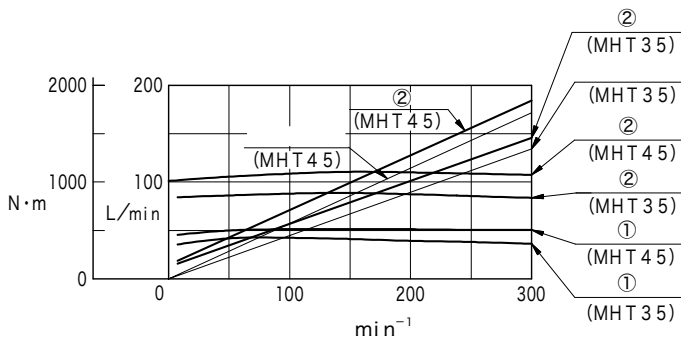
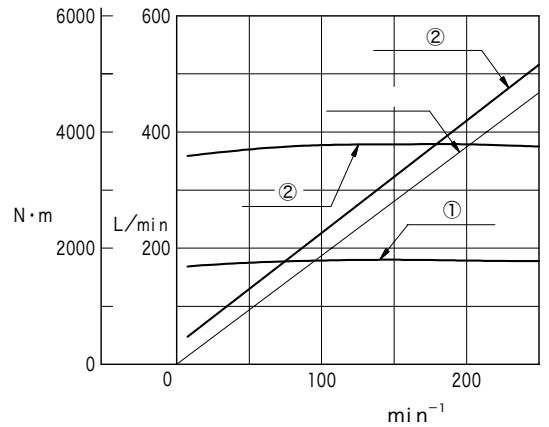
(25 mm²/s(cSt))

① : 7 MPa(70kgf/cm²) ② : 14 MPa(140kgf/cm²)

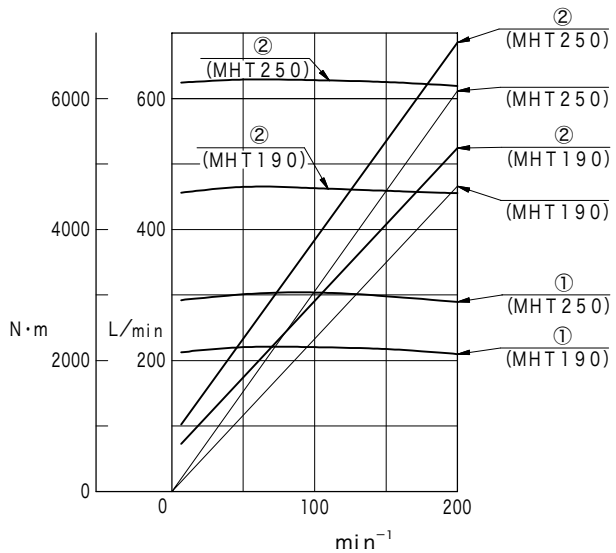
MHT 70/35/35
MHT 90/45/45



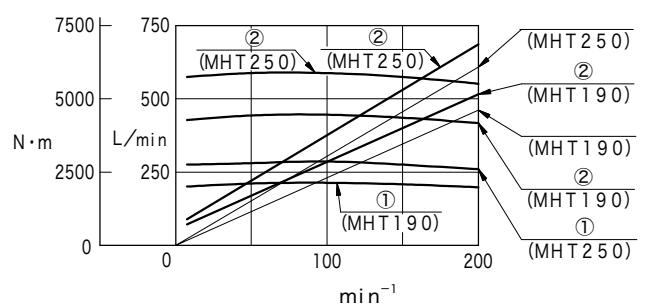
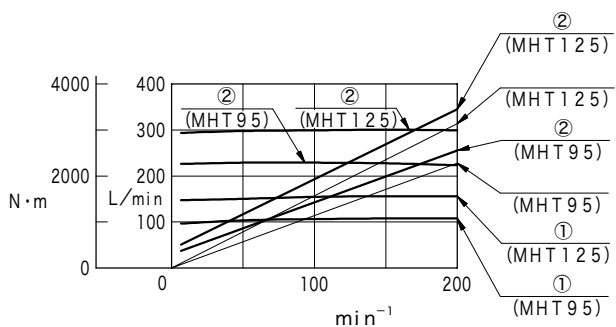
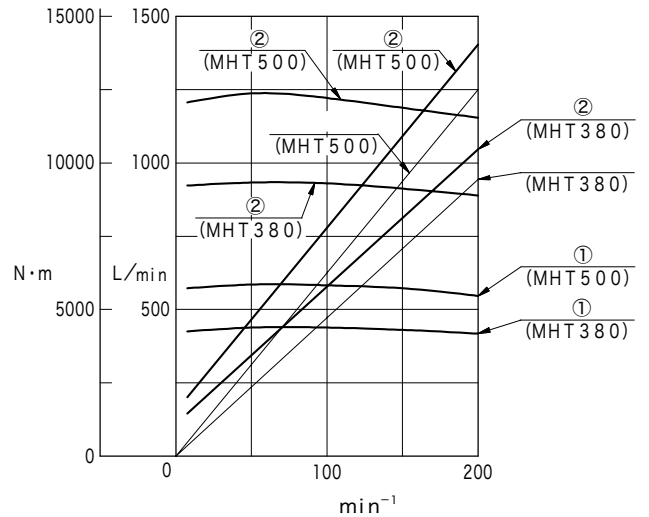
MHT 150/75/75



MHT 190/95/95
MHT 250/125/125



MHT 380/190/190
MHT 500/250/250

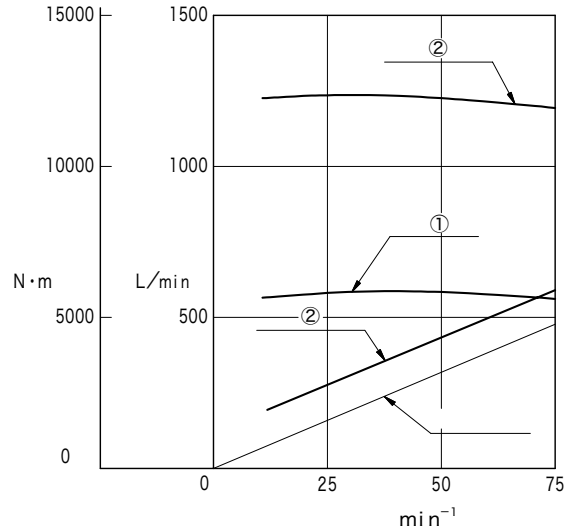
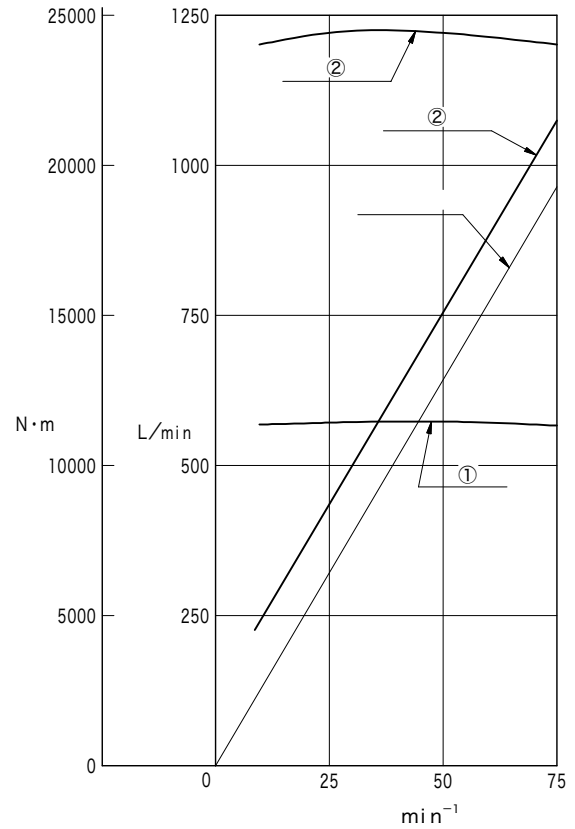
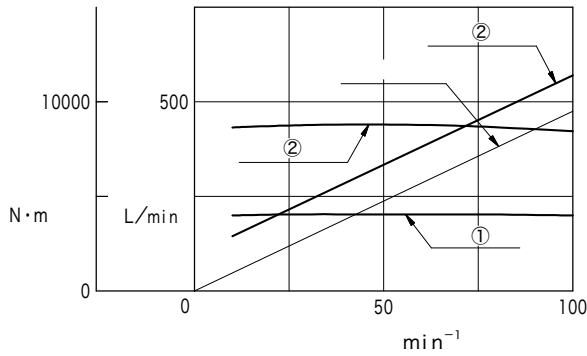
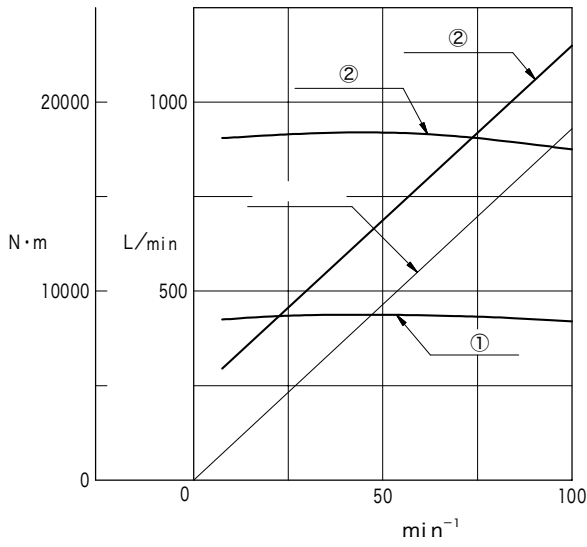


(25 mm²/s(cSt))

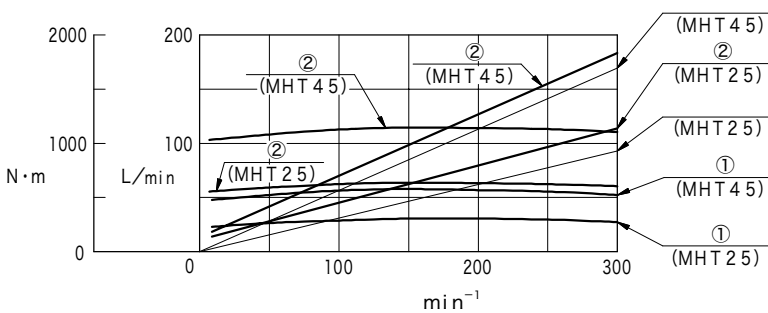
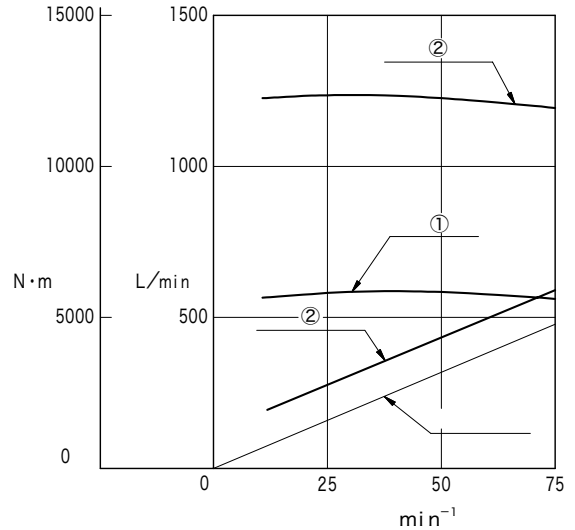
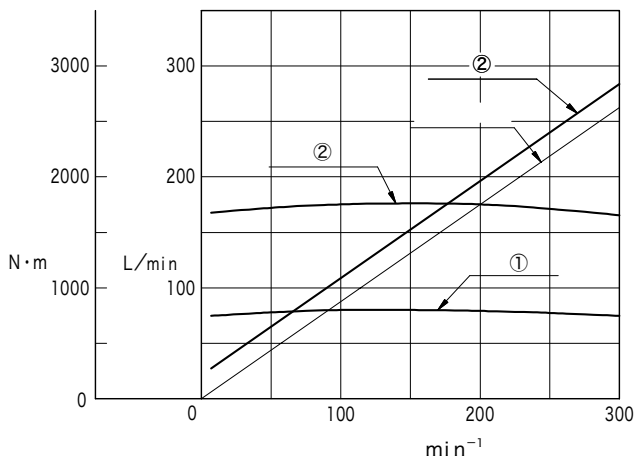
① : 7 MPa(170kgf/cm²) ② : 14 MPa(140kgf/cm²)

MHT750/375/375

MHT1000/500/500



3
MHT70/45/25



N
20

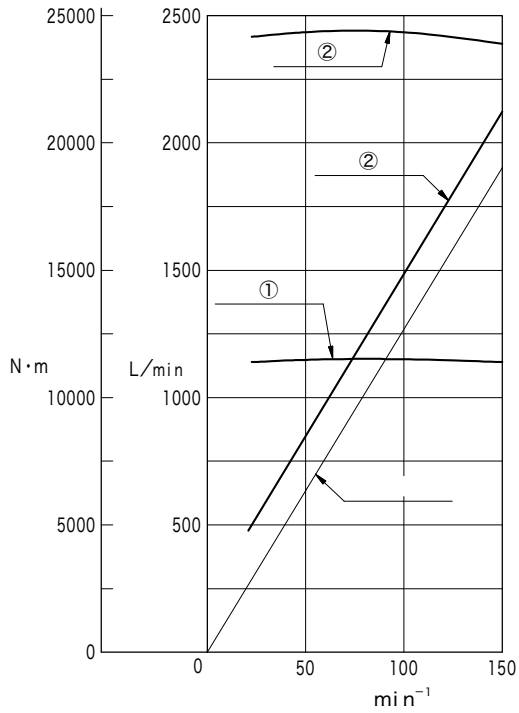
モーター(ベーン)

(25 mm²/s(cSt))

① : 7 MPa(70kgf/cm²) ② : 14 MPa(140kgf/cm²)

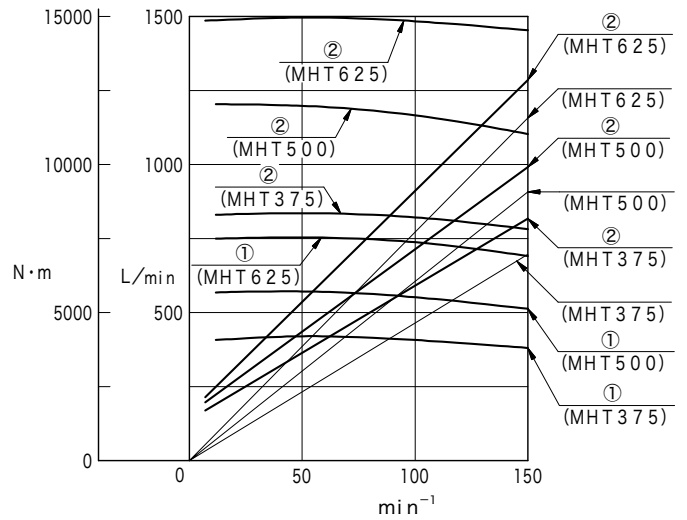
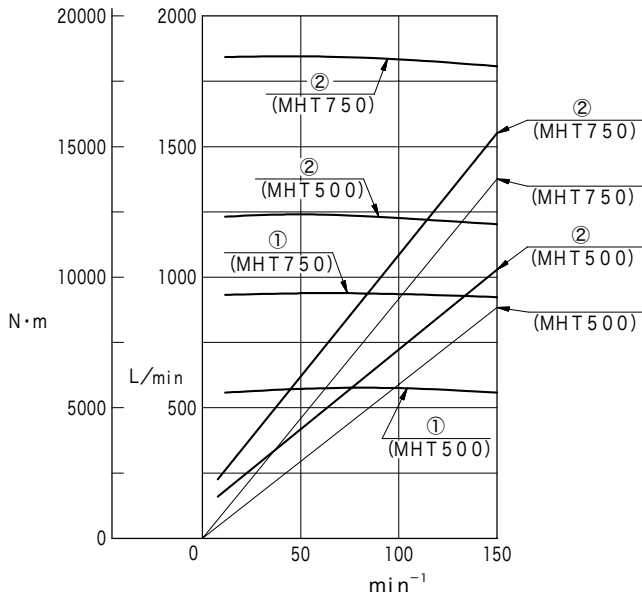
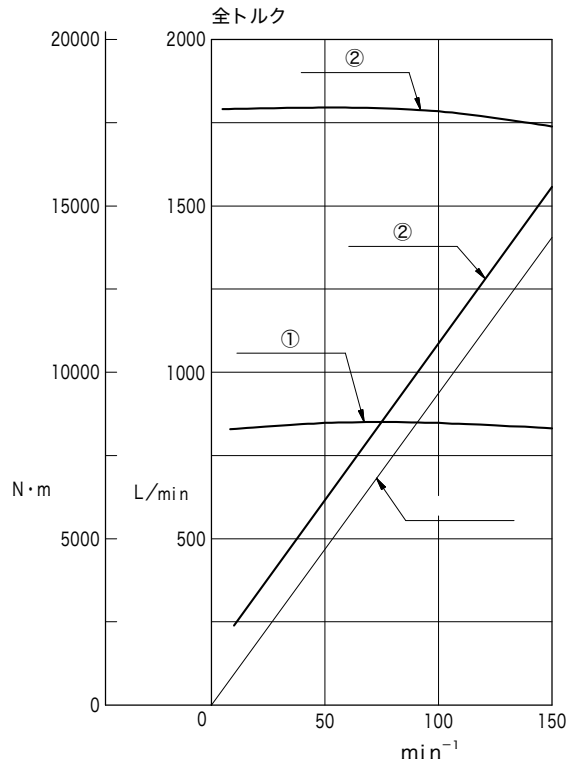
3

MHT1000/750/500



4

MHT750/625/500/375



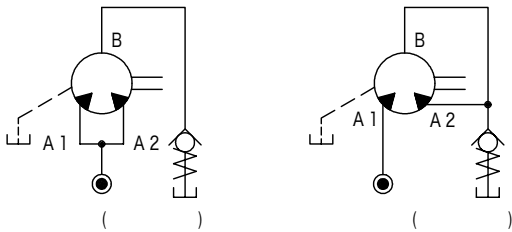
N
21

モータ(ベーン)

- A, B (MHT50/25/25) 가
- 가

2	MHT24/12/12 MHT32/16/16					
	2					
3	MHT70/45/25					
	MHT1000/750/500					
4	MHT750/625/500/375					

	A1	A2	B



● 3 (MHT70/45/25)

	A1	A2	B

- MHT750/625/500/375 MHT1000/750/500
- MHT50/25/25 가

N
22

モーター(ベーン)

- 4 (MHT24,32,50) (6)

0.17MPa(1.7kgf/cm²)
● 3.5MPa(35kgf/cm²) 50

	cm ³ /min		cm ³ /min
MHT24/12/12	200	MHT190/95/95	200
MHT32/16/16		MHT250/125/125	
MHT50/25/25		MHT380/190/190	570
MHT70/35/35		MHT500/250/250	
MHT90/45/45		MHT750/375/375	760
MHT150/75/75		MHT1000/500/500	

- 準) ((MHT50/25/25))

()
● ()
● 0.5~3.5MPa(5~35 kgf/cm²)
● 28°C 가 가 (50 min⁻¹) 28°C

- (N2 PAGE)

	A			B		
MHT24/12/12	1-1/4	FL1-10-10P-10-JA-S4-J	FL1-10-10W-10-JA	1-1/4	FL1-10-10P-10-JA-S21-J	FL1-10-10W-10-JA-S21
MHT32/16/16					FL1-10-10P-10-JA-S19-J	FL1-10-10W-10-JA-S19
MHT50/25/25	1-1/2	FL1-12-12P-10-JA-S4-J	FL1-12-12W-10-JA	1-1/2	FL1-12-12P-10-JA-S19-J	FL1-12-12W-10-JA-S19
MHT70/35/35						
MHT70/45/25						
MHT90/45/45	2	FL1-20-20P-10-JA-S4-J	FL1-20-20W-10-JA	2	FL1-16-16P-10-JA-S19-J	FL1-16-16W-10-JA-S19
MHT150/75/75						
MHT190/95/95						
MHT250/125/125						
MHT380/190/190						
MHT500/250/250						
MHT750/375/375						
MHT1000/500/500						
MHT750/625/500/375						
MHT1000/750/500						

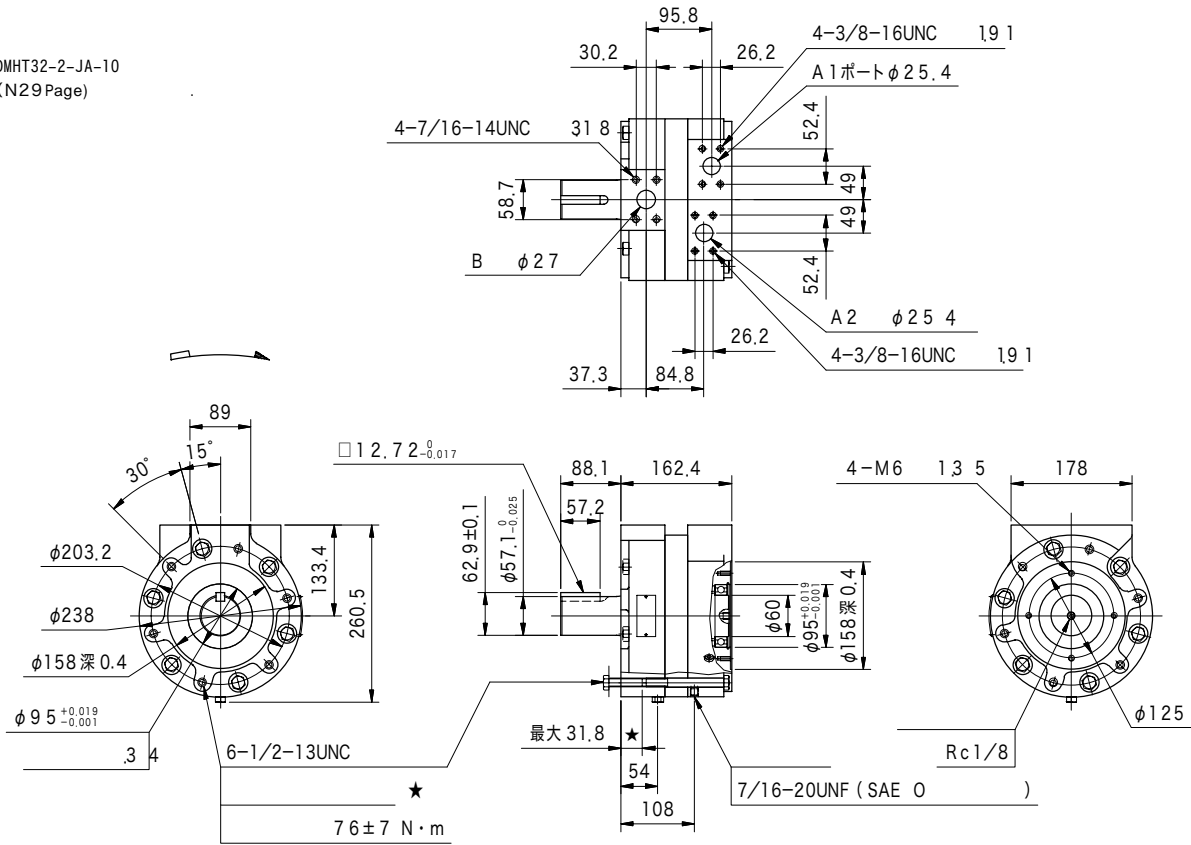
	A1, A2			B		
MHT24/12/12	1	FL1-8-08P-10-JA-S4-J	FL1-8-08W-10-JA	1-1/4	FL1-10-10P-10-JA-S4-J	FL1-10-10W-10-JA
MHT32/16/16						
MHT50/25/25	1-1/4	FL1-10-10P-10-JA-S4-J	FL1-10-10W-10-JA	1-1/2	FL1-12-12P-10-JA-S4-J	FL1-12-12W-10-JA
MHT70/35/35						
MHT70/45/25						
MHT90/45/45	1-1/2	FL1-12-12P-10-JA-S4-J	FL1-12-12W-10-JA	2	FL1-16-16P-10-JA-S4-J	FL1-16-16W-10-JA
MHT150/75/75						
MHT190/95/95						
MHT250/125/125						
MHT380/190/190						
MHT500/250/250						
MHT750/375/375						
MHT1000/500/500						

-
-
-

, 0

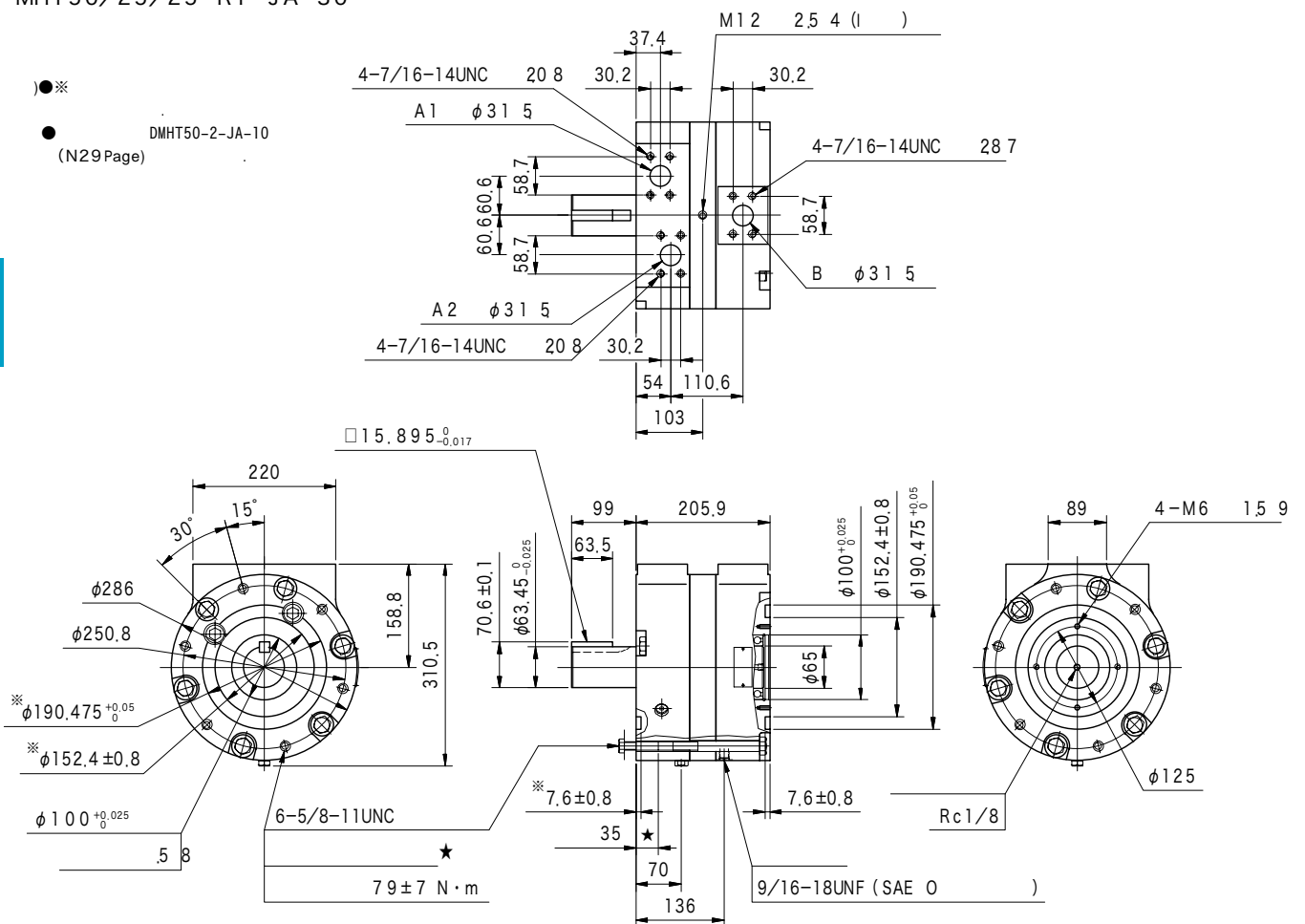
MHT24/12/12-R1-JA-12-S12
MHT32/16/16-R1-JA-12-S12

● DMHT32-2-JA-10
(N29 Page)



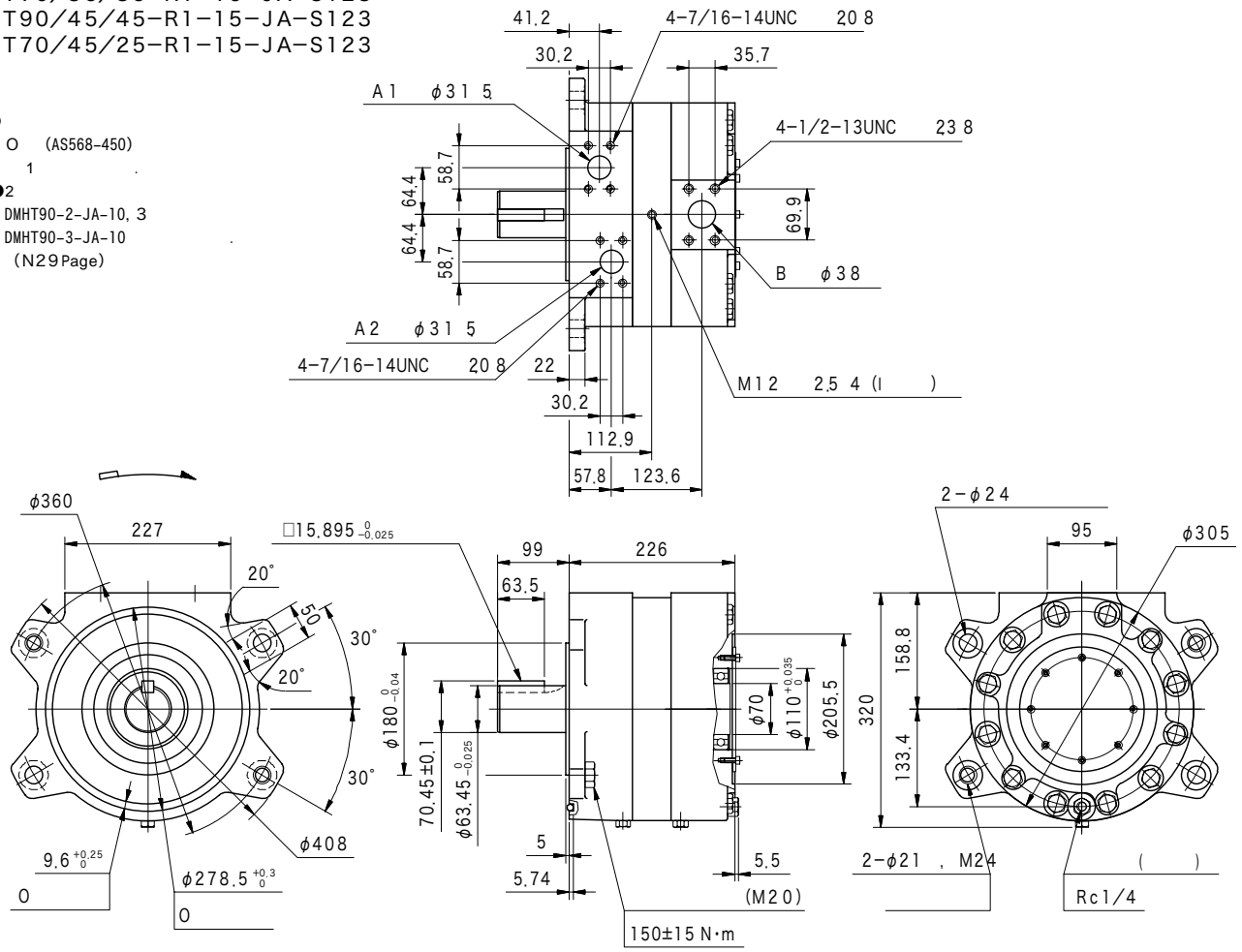
MHT50/25/25-R1-JA-30

●※ DMHT50-2-JA-10
(N29 Page)



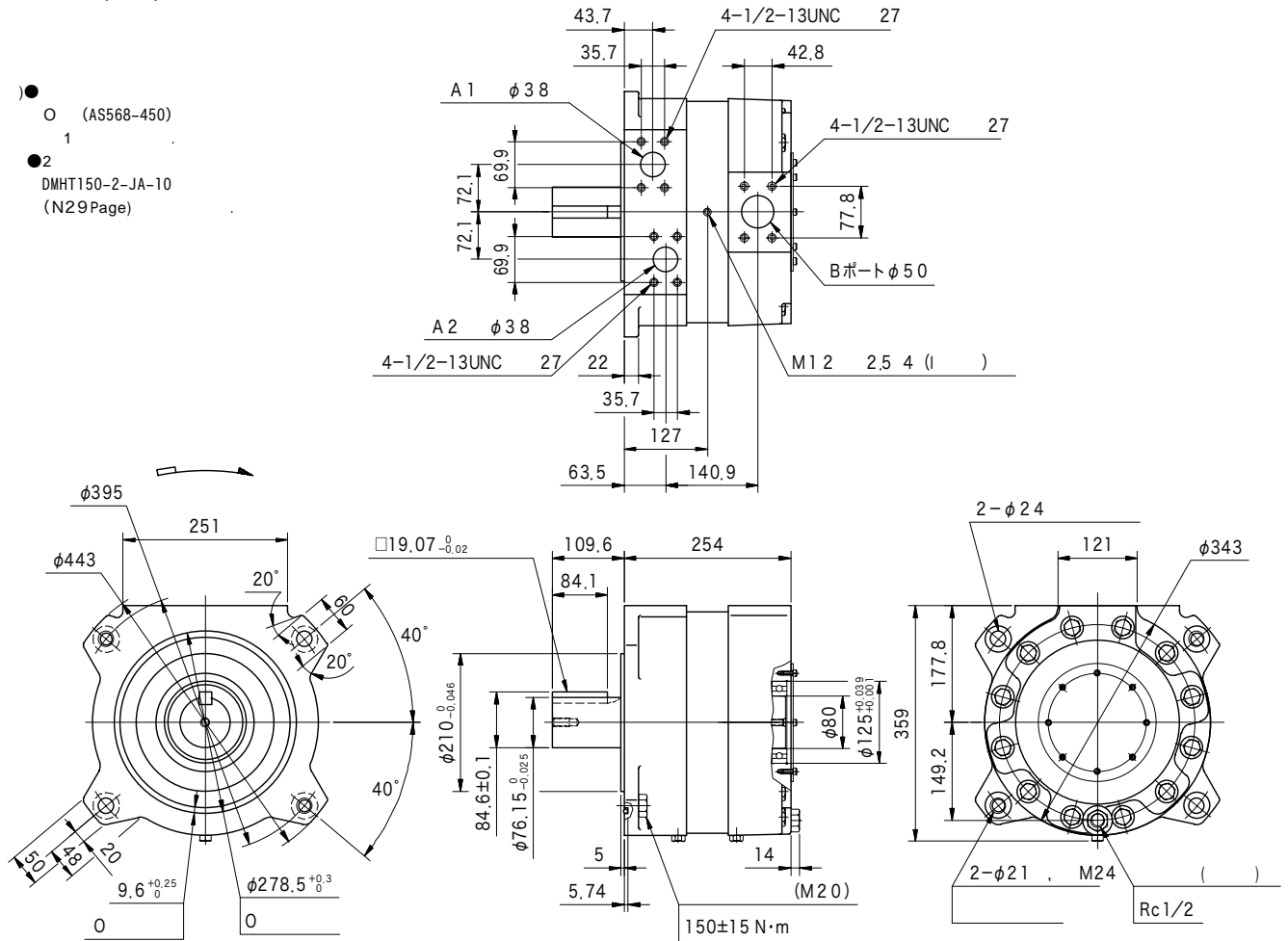
MHT70/35/35-R1-15-JA-S123
MHT90/45/45-R1-15-JA-S123
MHT70/45/25-R1-15-JA-S123

- 1 (AS568-450)
- 2 DMHT90-2-JA-10, 3
DMHT90-3-JA-10
(N29Page)



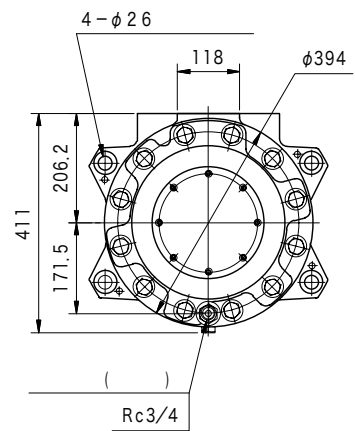
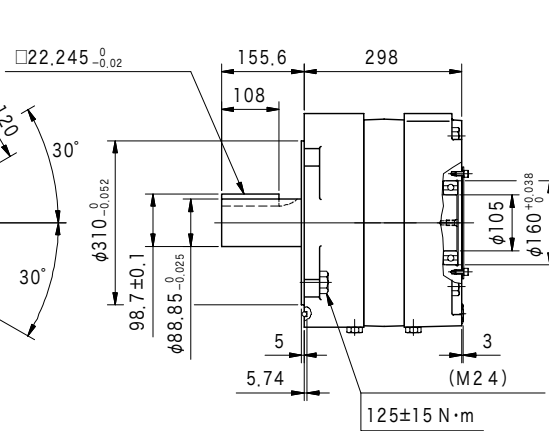
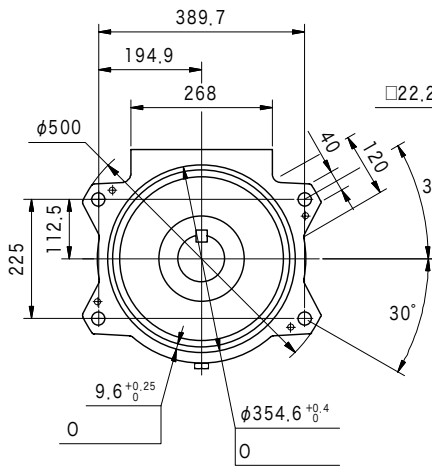
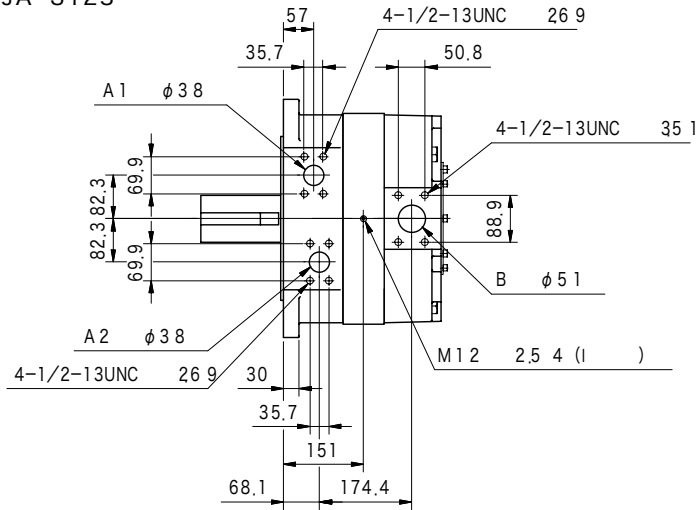
MHT150/75/75-R1-35-JA-S123

- 1 (AS568-450)
- 2 DMHT150-2-JA-10
(N29Page)



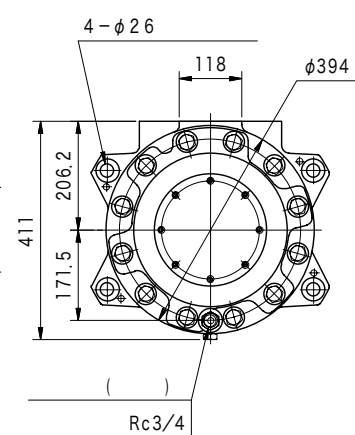
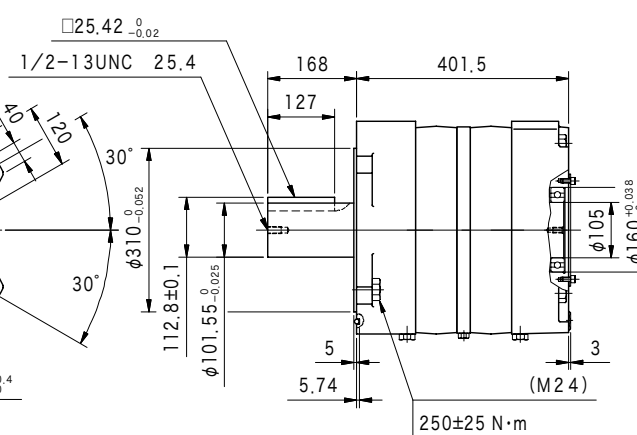
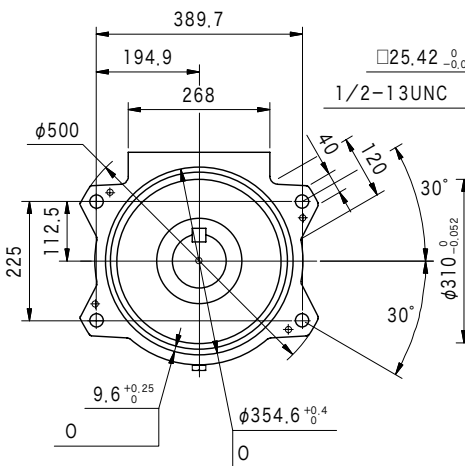
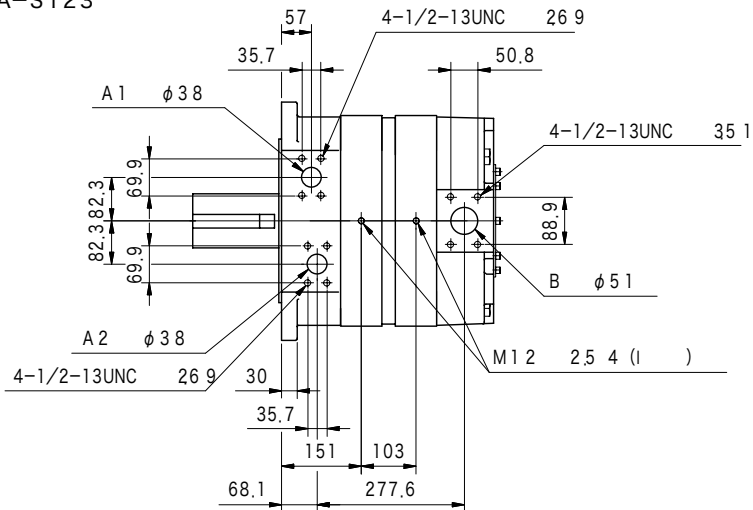
MHT190/95/95-R1-35-JA-S123
MHT250/125/125-R1-35-JA-S123

- O (AS568-456)
- 1
- DMHT250-2-10-JA-S1 (N30 Page)

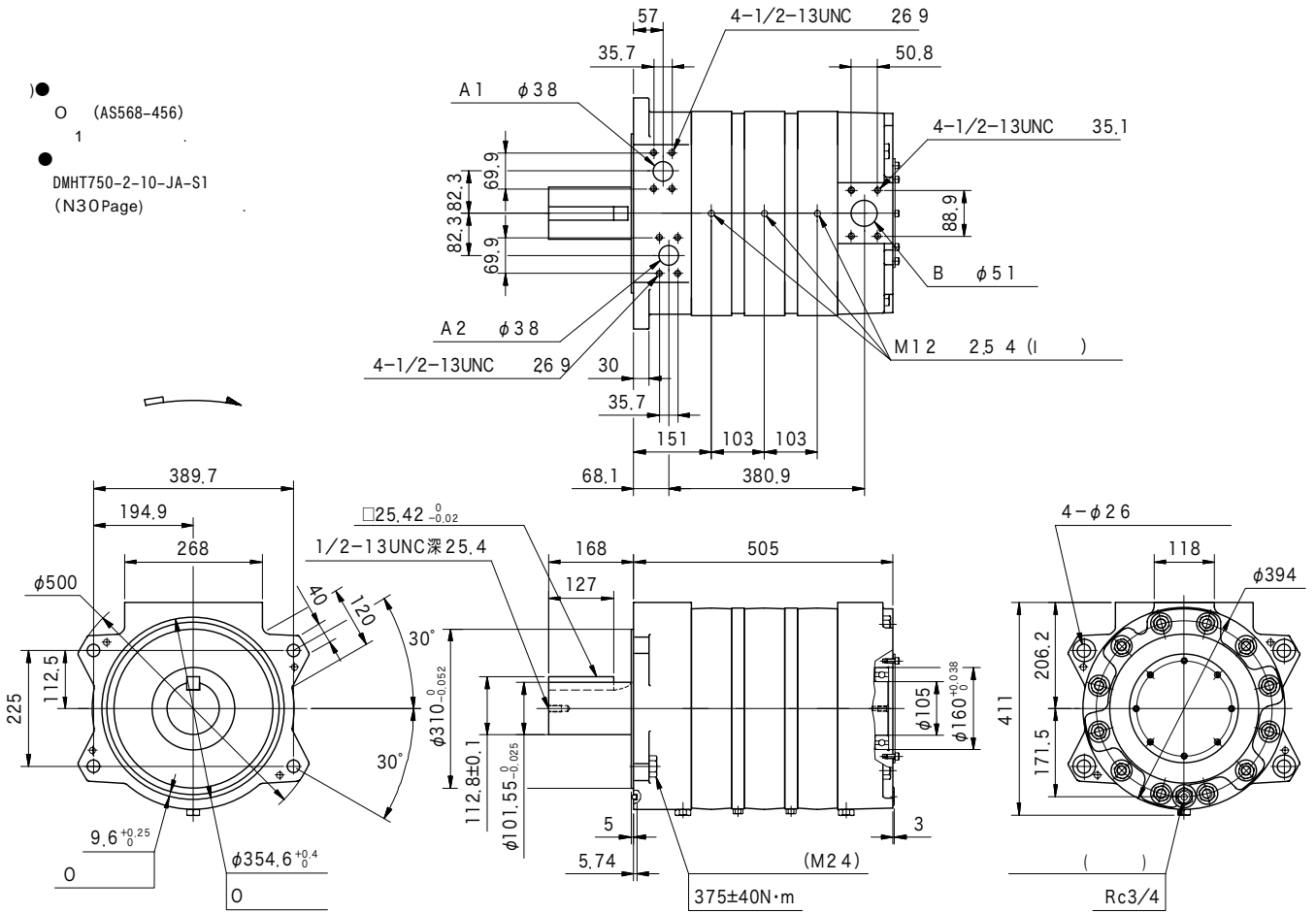


MHT380/190/190-R1-35-JA-S123
MHT500/250/250-R1-35-JA-S123

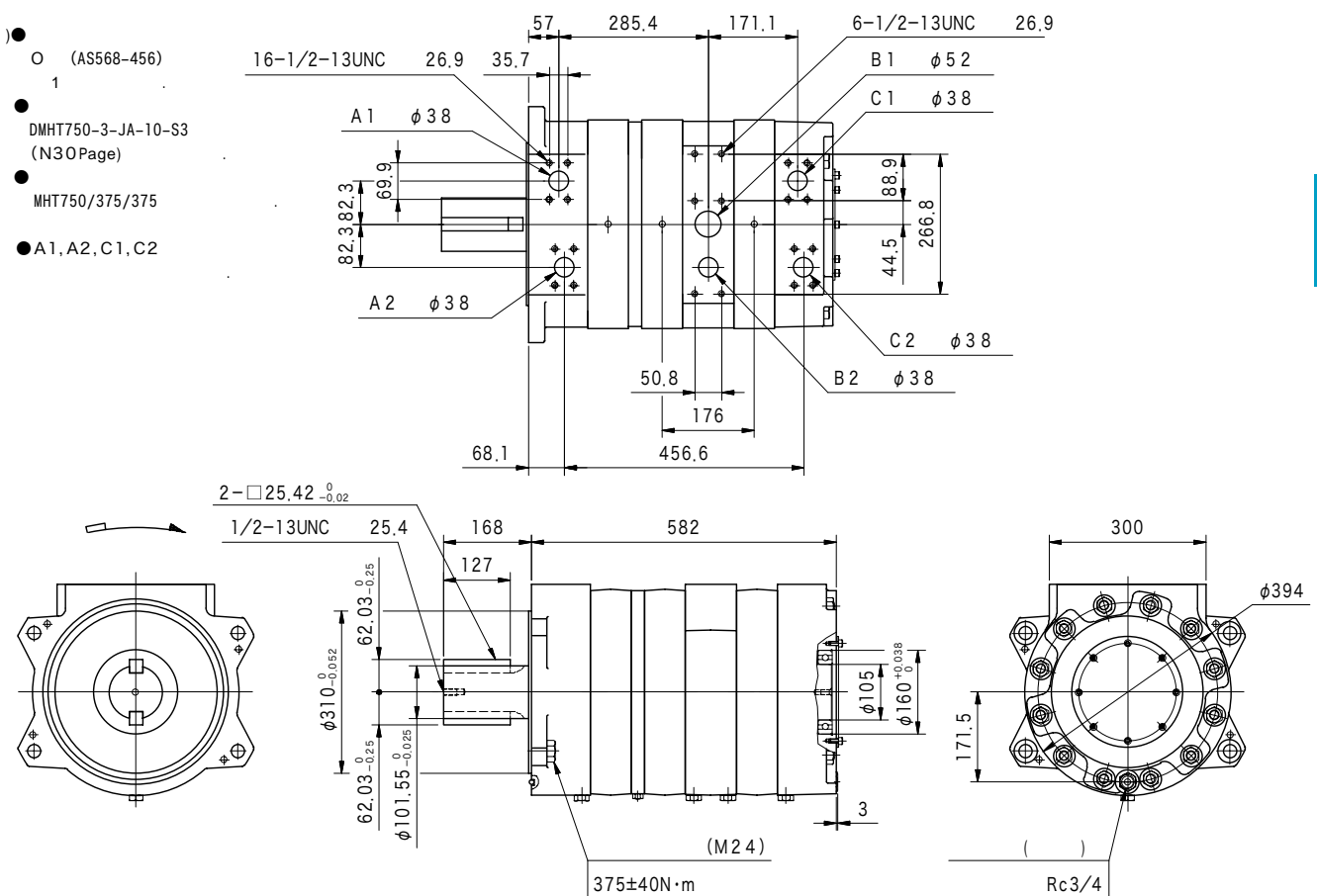
- O (AS568-456)
- 1
- DMHT500-2-10-JA-S1 (N30 Page)



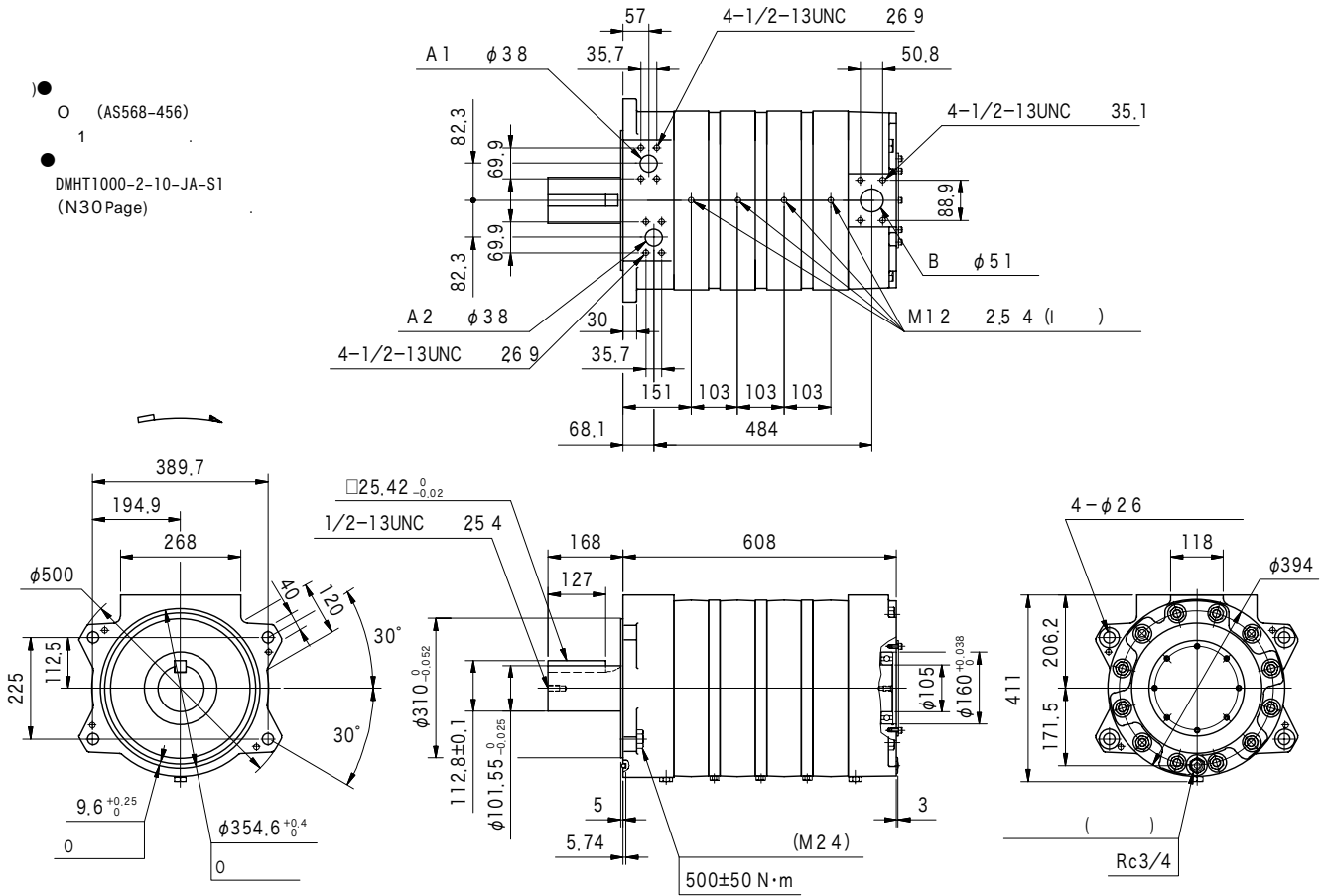
MHT750/375/375-R1-35-JA-S123



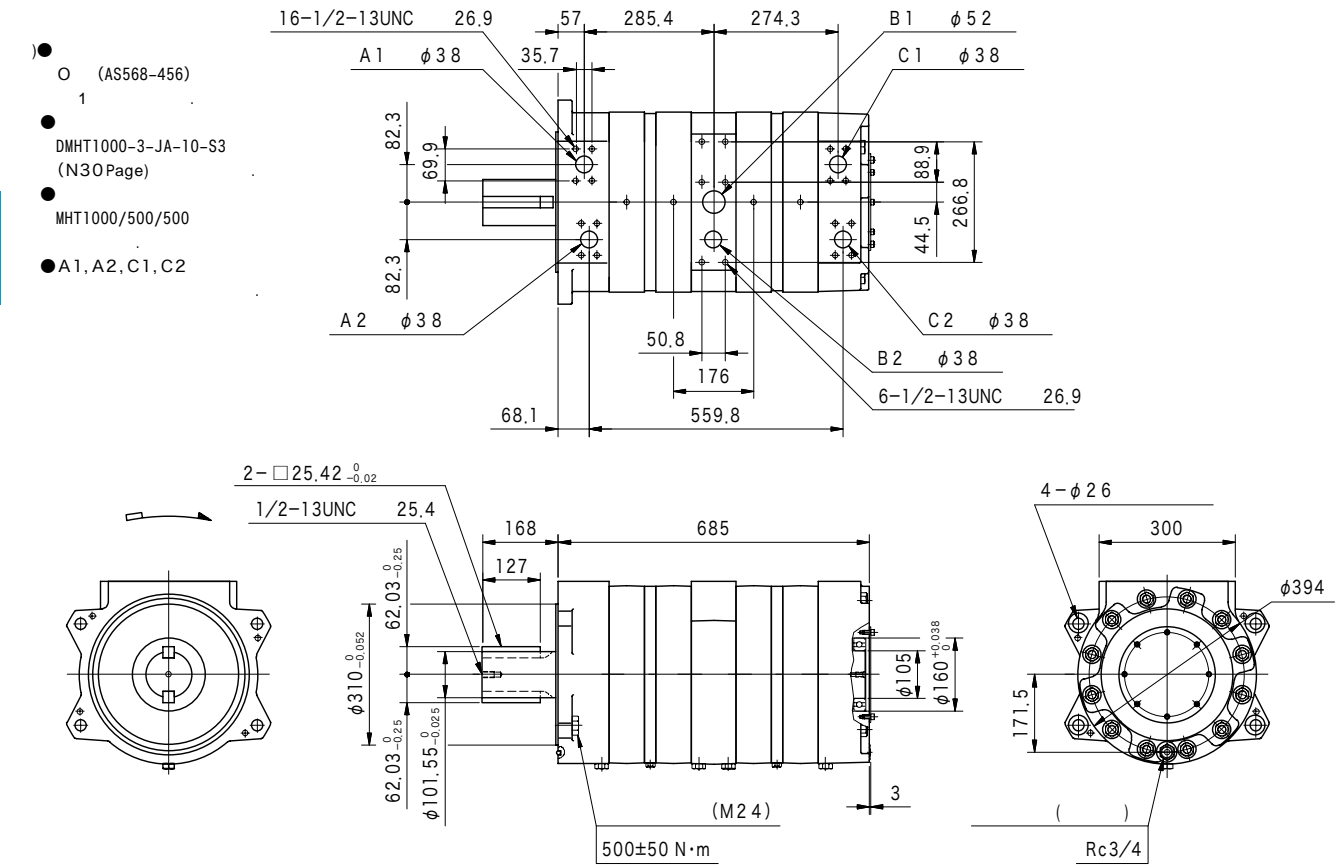
MHT750/625/500/375-R1-JA-35-S123



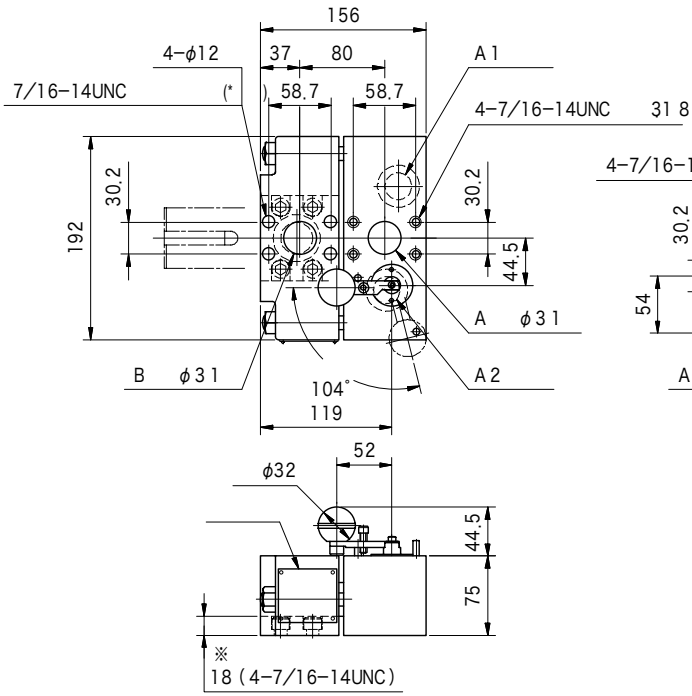
MHT1000/500/500-R1-35-JA-S123



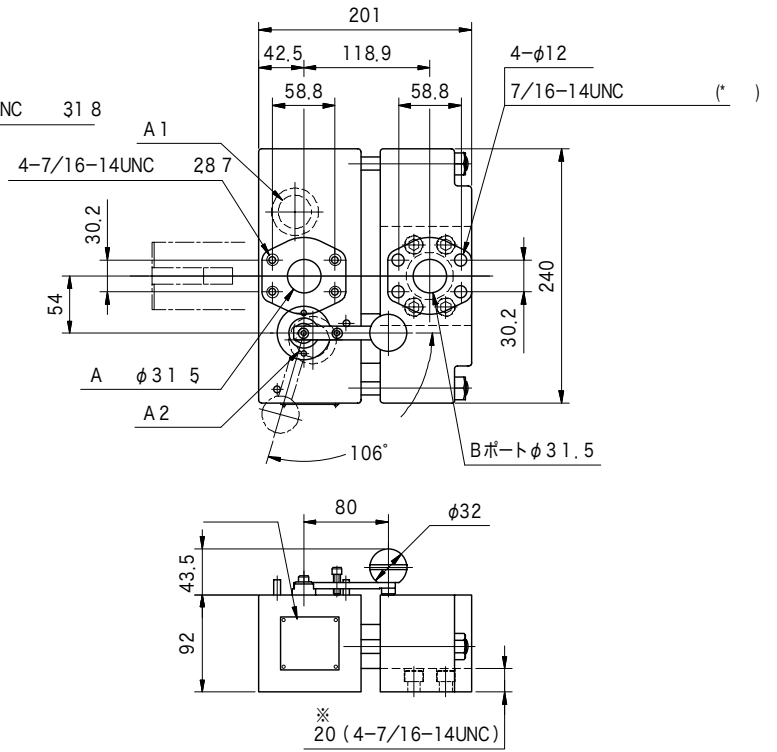
MHT1000/750/500-R1-JA-35-S123



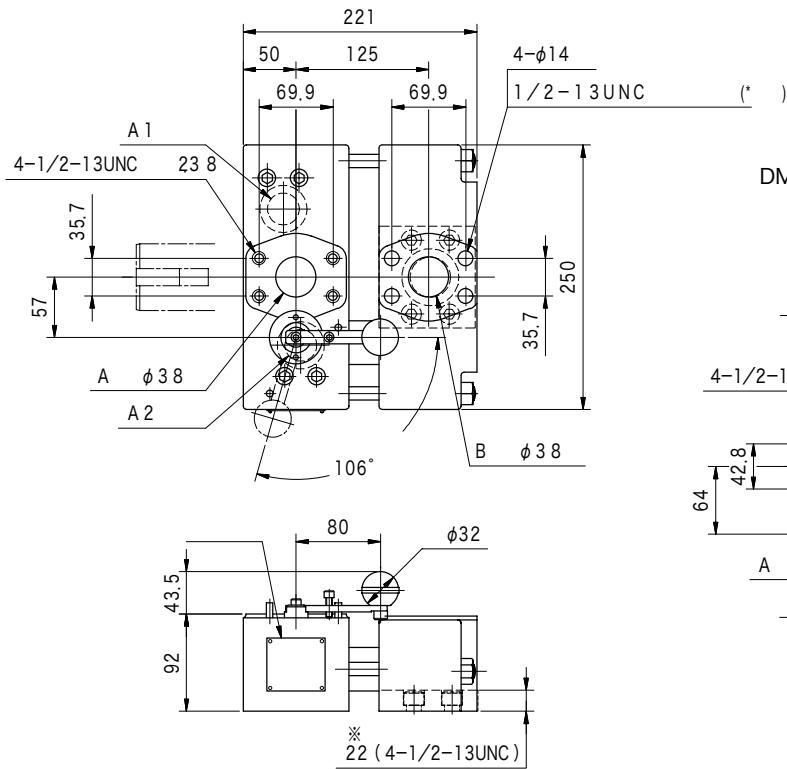
DMHT32-2-JA-10



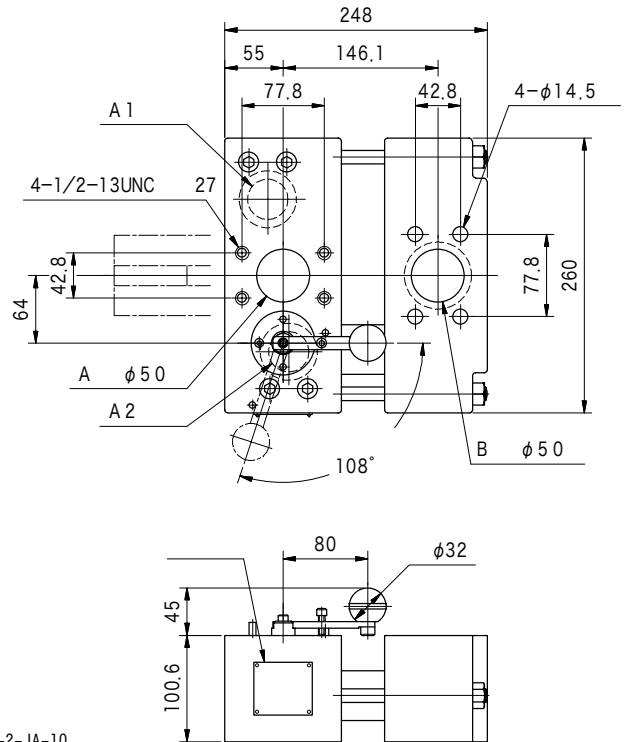
DMHT50-2-JA-10



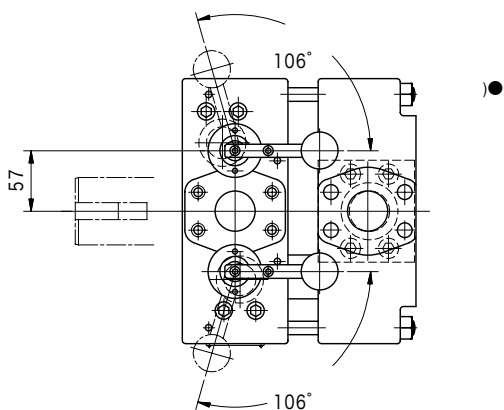
DMHT90-2-JA-10



DMHT150-2-JA-10

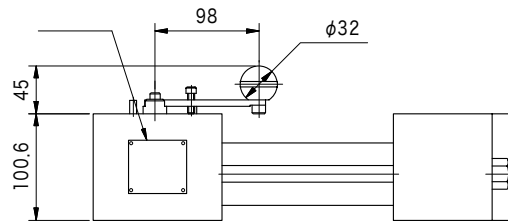
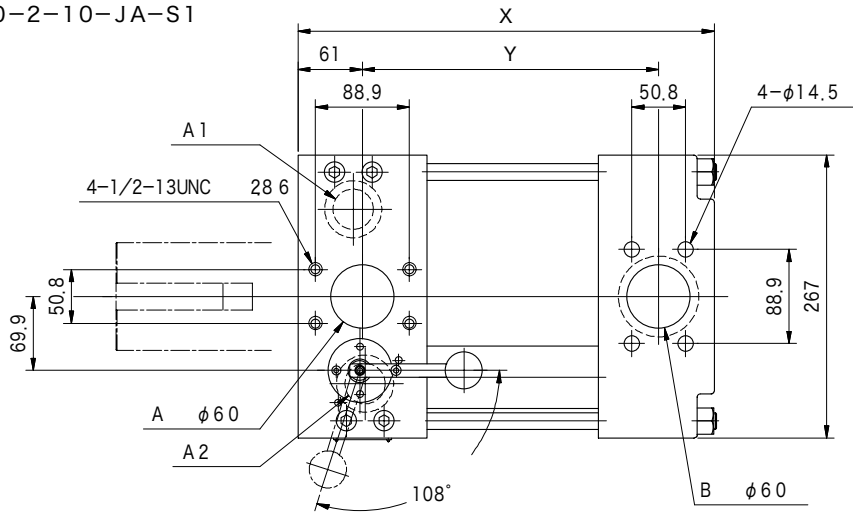


DMHT90-3-JA-10



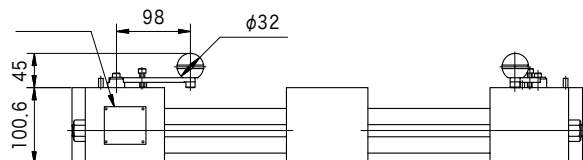
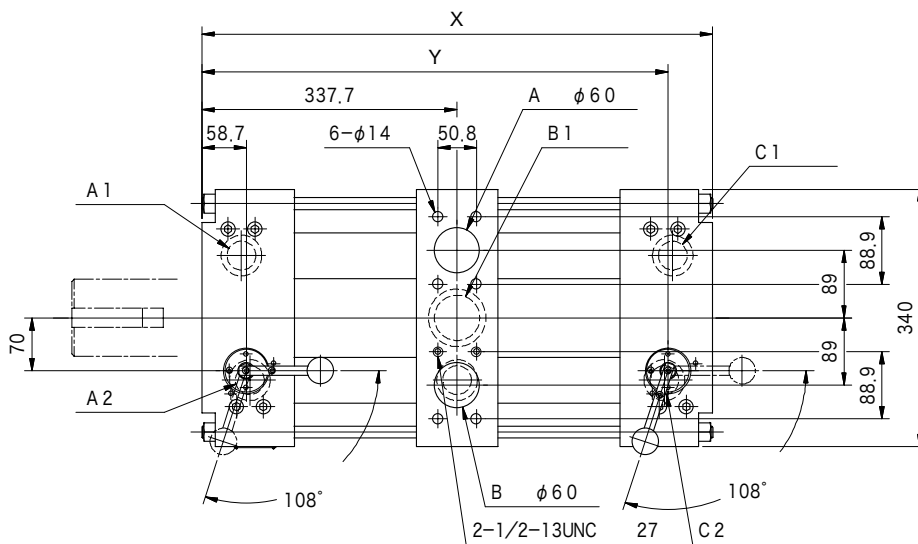
MHT90-2-JA-10

DMHT250-2-10-JA-S1
 DMHT500-2-10-JA-S1
 DMHT750-2-10-JA-S1
 DMHT1000-2-10-JA-S1



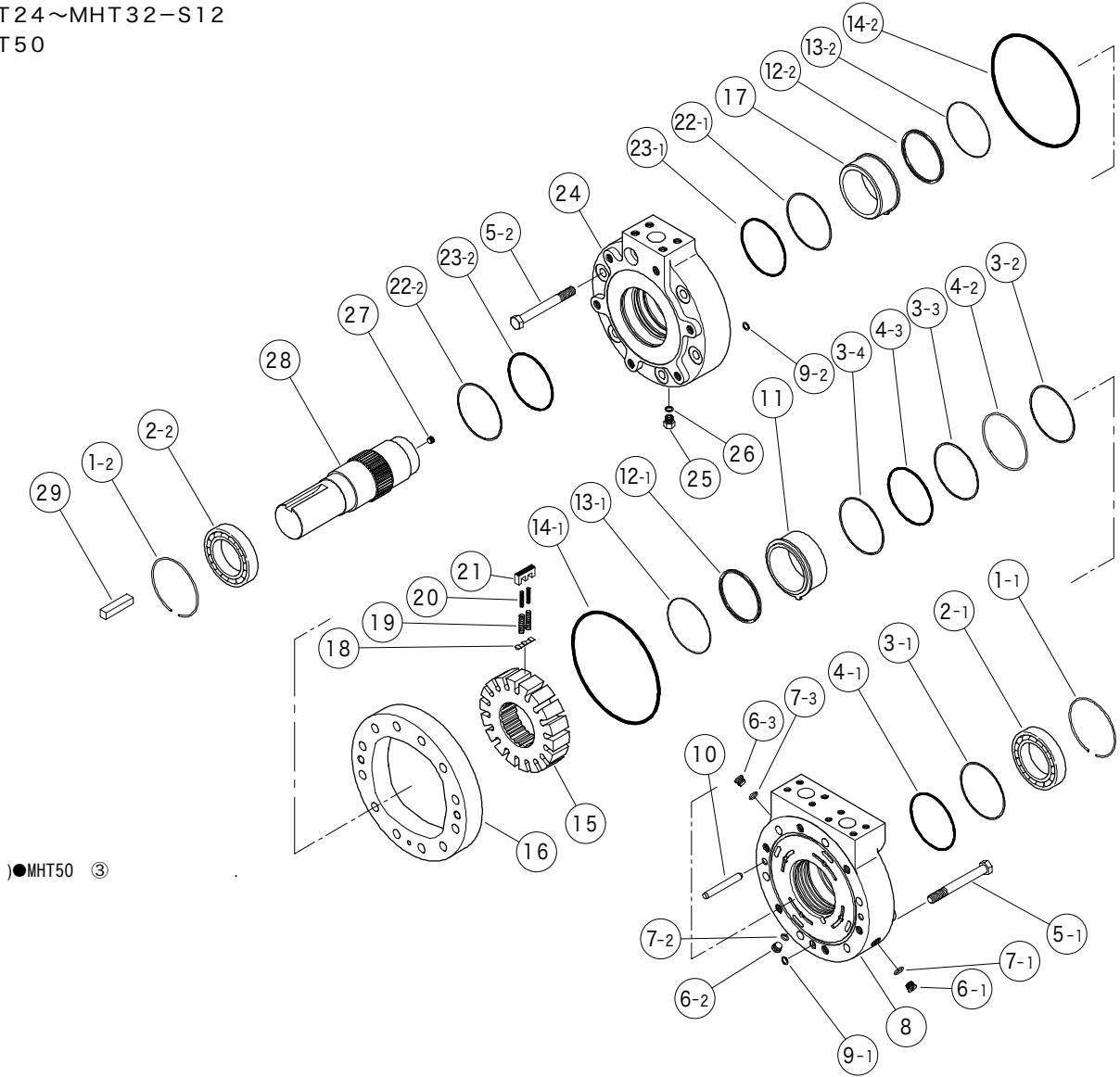
	X	Y
DMHT250	291	177
DMHT500	394	280
DMHT750	497	383
DMHT1000	600	486

DMHT750-3-JA-10-S3
 DMHT1000-3-JA-10-S3



	X	Y
DMHT750	572.3	513.6
DMHT1000	675.5	616.8

MHT24~MHT32-S12
MHT50



●MHT50 ③

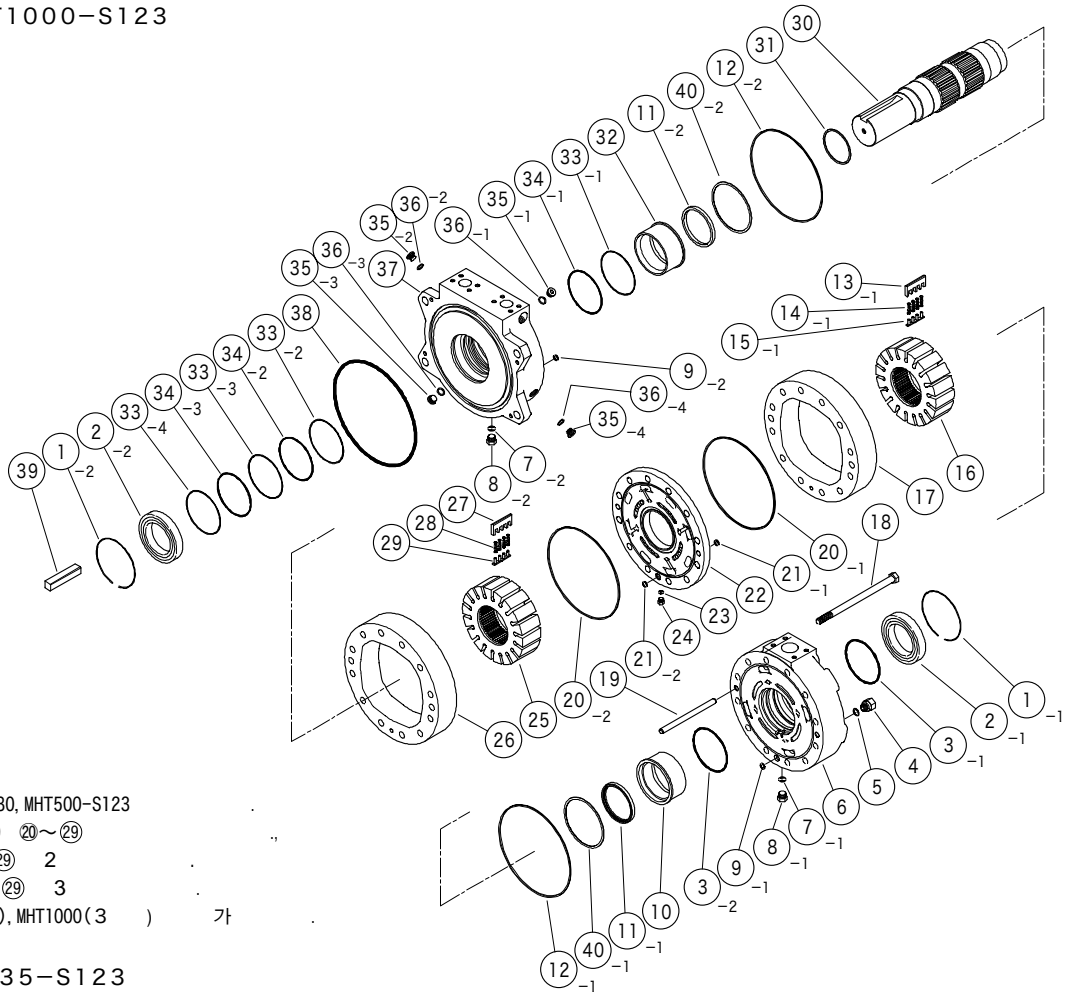
MHT24/12/12-S12
MHT32/16/16-S12

2		40012193	JIS B 1521 6012ZZ	2
3		VA21304	—	4
4	O	007904319	AS568-043 (NBR, Hs90)	3
7	O	007990619	AS568-906 (NBR, Hs90)	3
9	O	007901219	AS568-012 (NBR, Hs90)	2
12	X	VP429290	—	2
14	O	007926219	AS568-262 (NBR, Hs90)	2
22		VA15590	—	2
23	O	007915319	AS568-153 (NBR, Hs90)	2
26	O	007990419	AS568-904 (NBR, Hs90)	1

MHT50/25/25

2		40012194	JIS B 1521 6013ZZ	2
4	O	007904419	AS568-044 (NBR, Hs90)	3
7	O	007990819	AS568-908 (NBR, Hs90)	3
9	O	007911219	AS568-112 (NBR, Hs90)	2
12	X	VP427689	—	2
14	O	007926819	AS568-268 (NBR, Hs90)	2
22		VA15596	—	2
23	O	007923919	AS568-239 (NBR, Hs90)	2
26	O	007990619	AS568-906 (NBR, Hs90)	1

MHT70~MHT1000-S123



- () ● MHT380, MHT500-S123
- MHT70~MHT250 20~29
- MHT750 20~29 2
- MHT1000 20~29 3
- MHT750(4), MHT1000(3) が

MHT70/35/35-S123
 MHT70/45/25-S123
 MHT90/45/45-S123

2		40012195	JIS B 1521 6014ZZ	2
3	○ グ	007924119	AS568-241 (NBR, Hs90)	2
5	○ ング	007990619	AS568-906 (NBR, Hs90)	1
7	○ ング	007990619	AS568-906 (NBR, Hs90)	2
9	○ ング	007911219	AS568-112 (NBR, Hs90)	2
11	シ フトシール	4001705	—	—
12	○ ング	007927119	AS568-271 (NBR, Hs90)	2
33	バックアップ リング	VA15592	—	4
34	○ リング	007915519	AS568-155 (NBR, Hs90)	3
36	○ リング	007991019	AS568-910 (NBR, Hs90)	3
38	○ リング	007945019	AS568-450 (NBR, Hs90)	1

MHT150/75/75-S123

2	受	40012196	JIS B 1521 6016ZZ	2	
3	○ リング	007924619	AS568-246 (NBR, Hs90)	2	
5	○ リング	007990619	AS568-906 (NBR, Hs90)	1	
7	○ リング	007990619	AS568-906 (NBR, Hs90)	2	
9	○ リング	007911219	AS568-112 (NBR, Hs90)	2	
2	11	シャフトシール	VA31071	—	2
12	シール	40012879	—	—	2
33	バックアップ リング	VA15594	—	—	4
34	○ リング	007915719	AS568-157 (NBR, Hs90)	3	
36	○ リング	007991219	AS568-912 (NBR, Hs90)	3	
38	○ リング	007945019	AS568-450 (NBR, Hs90)	1	

MHT190/95/95-S123
 MHT500/250/250-S123

MHT250/125/125-S123
 MHT750/375/375-S123

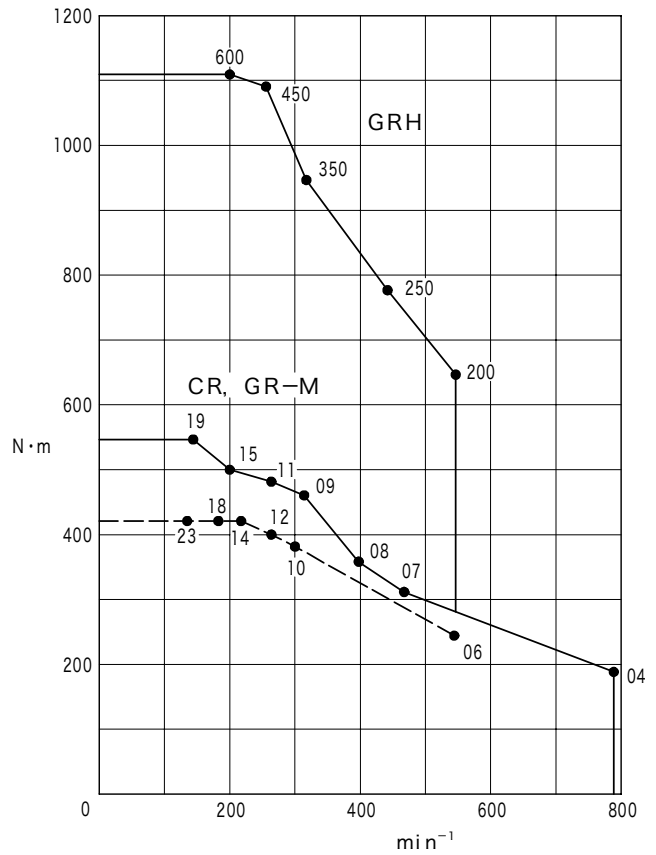
MHT380/190/190-S123
 MHT1000/500/500-S123

				個 数			
				MHT190 MHT250	MHT380 MHT500	MHT750	MHT1000
2	玉軸受	40012197	JIS B 1521 6021ZZ	2	2	2	2
3	○ リング	007925419	AS568-254 (NBR, Hs90)	2	2	2	2
5	○ リング	007991019	AS568-910 (NBR, Hs90)	1	1	1	1
7	○ リング	007991019	AS568-910 (NBR, Hs90)	2	2	2	2
9	○ リング	007911419	AS568-114 (NBR, Hs90)	2	2	2	2
11	シャフトシール	VA30972	—	2	2	2	2
12	シール	40012880	—	2	2	2	2
20	シール	40012880	—	—	2	4	6
21	○ リング	007911419	AS568-114 (NBR, Hs90)	—	2	4	6
23	○ リング	007990619	AS568-906 (NBR, Hs90)	—	1	2	3
33	バックアップリング	VA21130	—	4	4	4	4
34	○ リング	007916119	AS568-161 (NBR, Hs90)	3	3	3	3
36	○ リング	007991219	AS568-912 (NBR, Hs90)	4	4	4	4
38	○ リング	007945619	AS568-456 (NBR, Hs90)	1	1	1	1

CR/GR-M/GRH

●CR/GR-M/GRH

		cm ³ /rev	MPa	
				※
CR GR-M	04	62	21	28
	06	95	18	24
	07	106	21	28
	08	123		
	09	153	16	21.5
	10	167		
	11	184	18	24
	12	192	15	20
	14	239	12.5	16.5
	15	246	14	18.5
	18	288	10.5	14
	19	306	13	15.5
	23	383	8	10.5
GRH	200	200	23	30
	250	250	22	28.5
	350	350	19	25
	450	450	17	22.5
	600	600	13	17

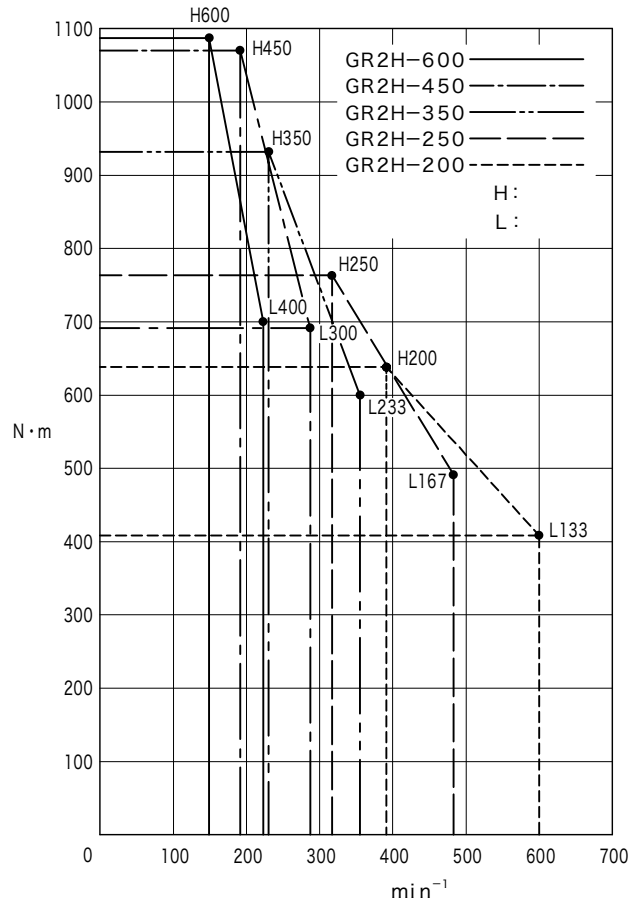


GR2H

●GR2H

		cm ³ /rev	MPa	
GR2H (2)	200	200/133	23	30
	250	250/167	22	28.5
	350	350/233	19	25
	450	450/300	17	22.5
	600	600/400	13	17

)※)



1

JIS K 2213-2 (가) ISO VG32~68(#90~180)
SAE SC,SD,SE,SF

「F3」

0.025mm

가

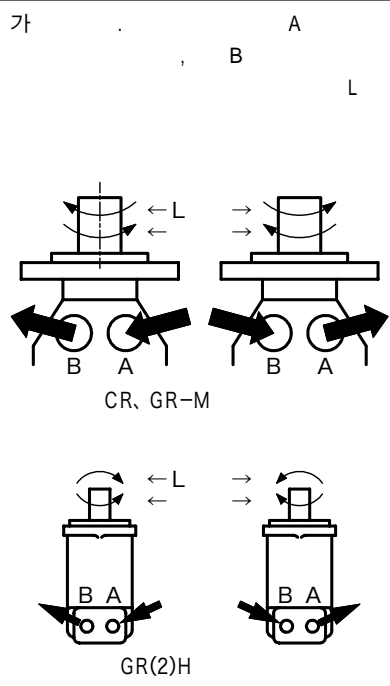
8

25 μm

10~860mm²/s(cSt)

13~54mm²/s(cSt)

65°C



7MPa(70kgf/cm²)(F3) 2MPa(20kgf/cm²)
1.8MPa(18kgf/cm²)(F3)
1MPa(10kgf/cm²)
D closed

가

CR GR(2) 1.5MPa(15kgf/cm²)
.GR-M) GR-M-1 1MPa(10kgf/cm²)
GR-M-2 2MPa(20kgf/cm²)

가

(T)

