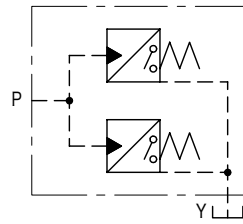


SG1/ST1-02

Pressure switch



●
●
● 가 2 on-off

形式

(F3)-ST1-02-10-11-JA-S40-J

1 2 3 4 5 6

1 : F3
2 : ST1
3 : 「 」
4 : 「 」
5 : ST1
6 : ST1

	MPa		MPa	kg
ST1-02	35	10	0.7~7	3.0
SG1-02		20	0.7~14	
		50	3.5~35	

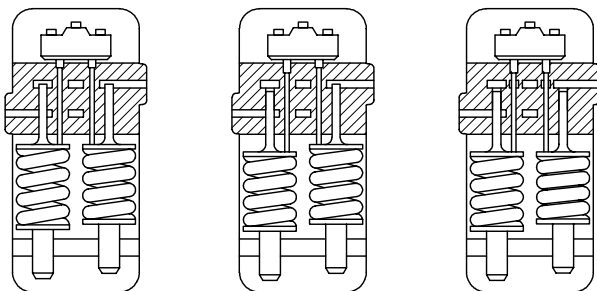
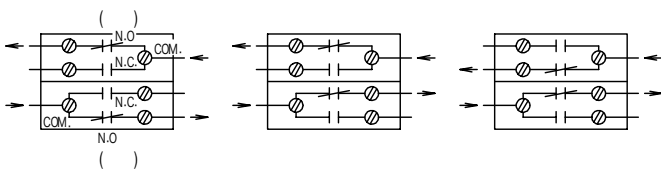
V	125, 250, 480	125	250
A	15	0.5	0.25



(JIS B 1176 強度区分12.9相当)

	× 2	
SG1-02	M6 × 50	1/4-20UNC × 50.8

● 가
● : 12~15N・m

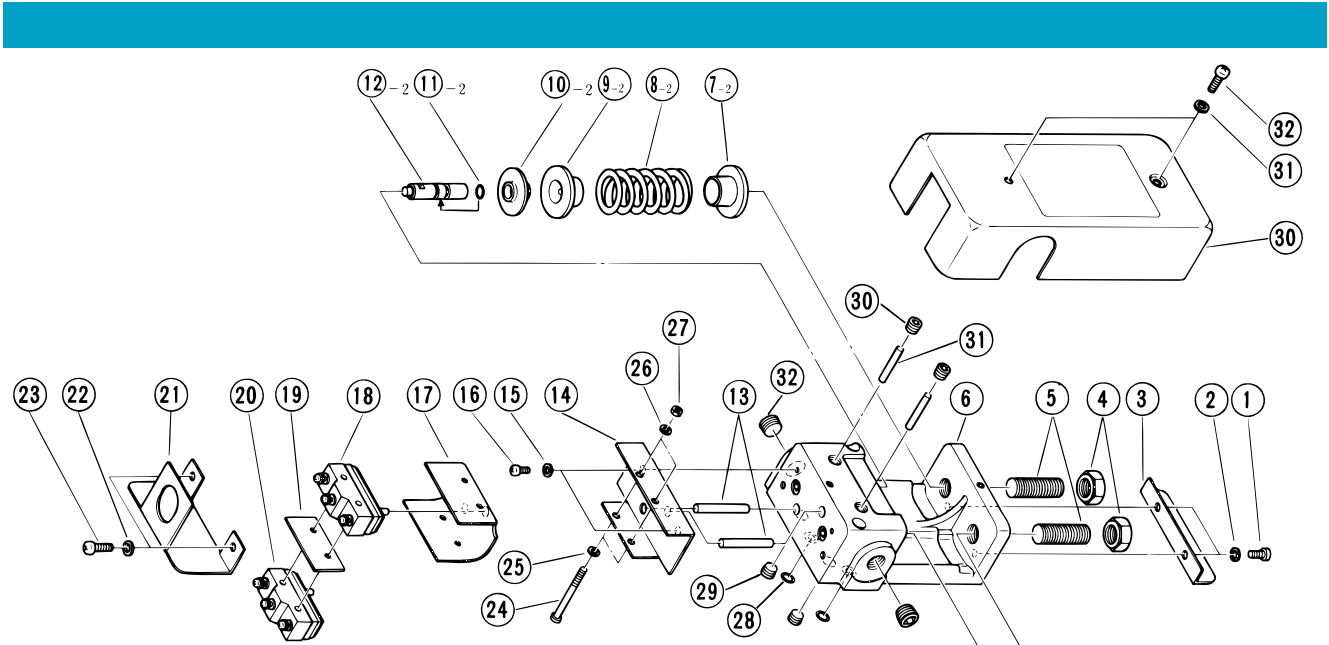
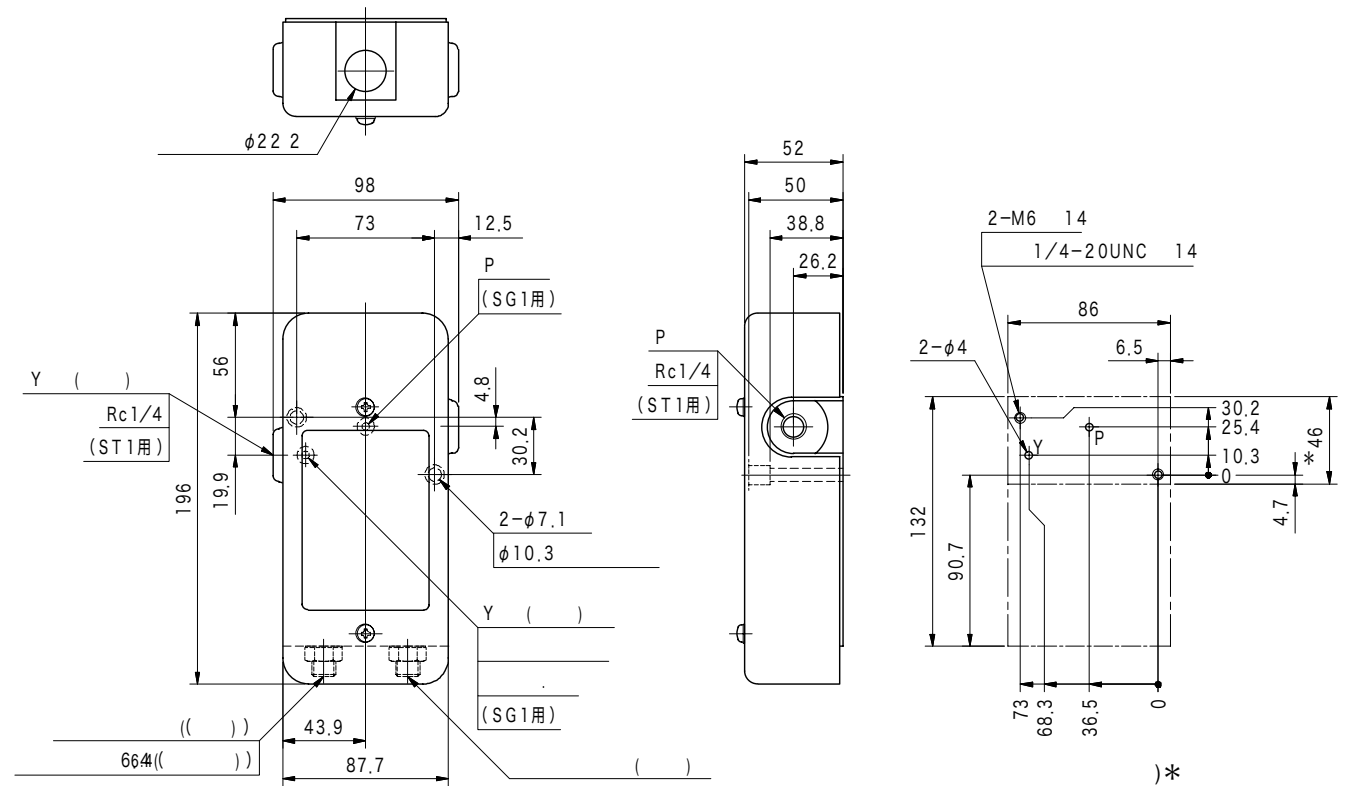


L
2

		Rc
SG1-02	SG1SM-02-10-JA-J	1/4

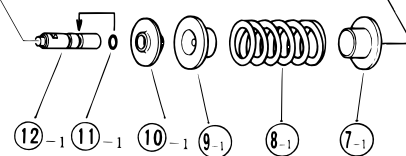


가 ()
Q11page .



11	007900917	AS568-009 (NBR, Hs70)	2
28	007901019	AS568-010 (NBR, Hs90)	2

10	VP162833	2
20	VP108903	2
50	VP108901	2

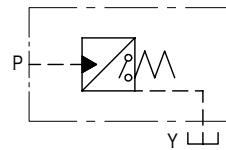
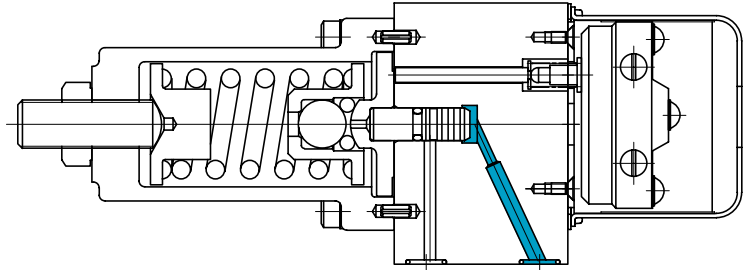
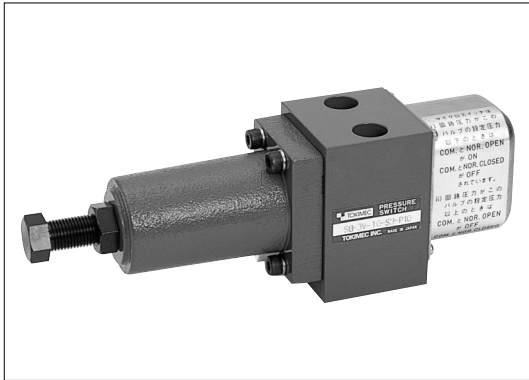


- ⑩は⑫に圧入されています。
- ⑳㉓はSG1にのみ使用します。

L
3

SG-3

Pressure switch



on-off

(F3)-SG-3F-12-(LA)

1 2 3 4 5

1 :
F3 :
2 (가)
3 「 」

4 ()
5 ()
LA :

L
4

	MPa		MPa	kg
SG-3	21	F	0.7~14	1.9
		V	3.5~21	

V	125, 250, 480	125	250
A	15	0.5	0.25

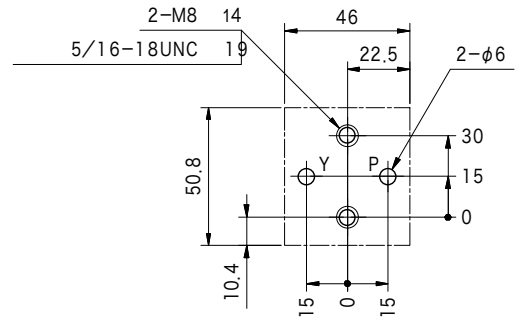
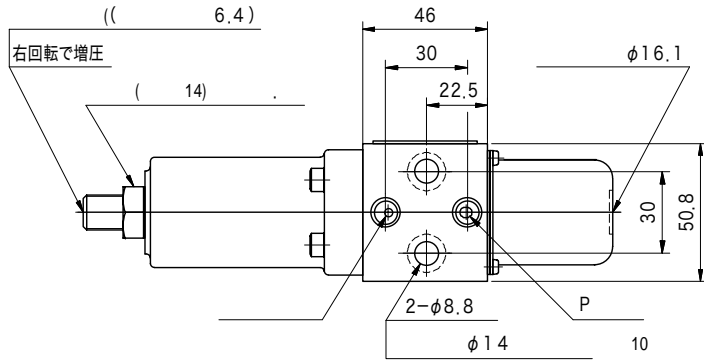
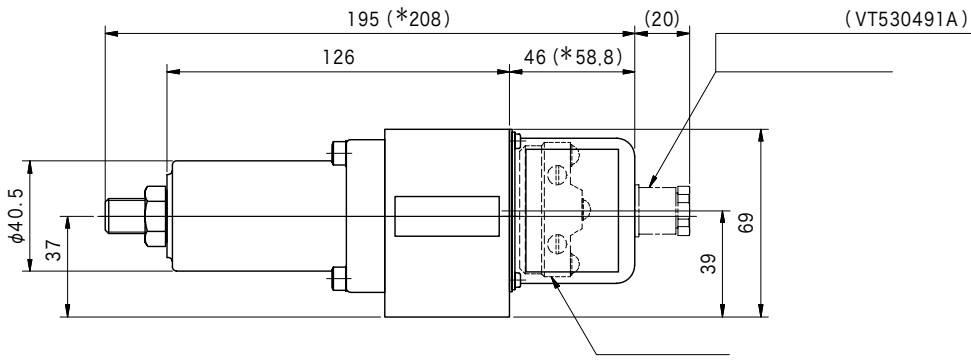
가 () 가

	× 2	
SG-3	M8 × 70	5/16-18UNC × 76.2

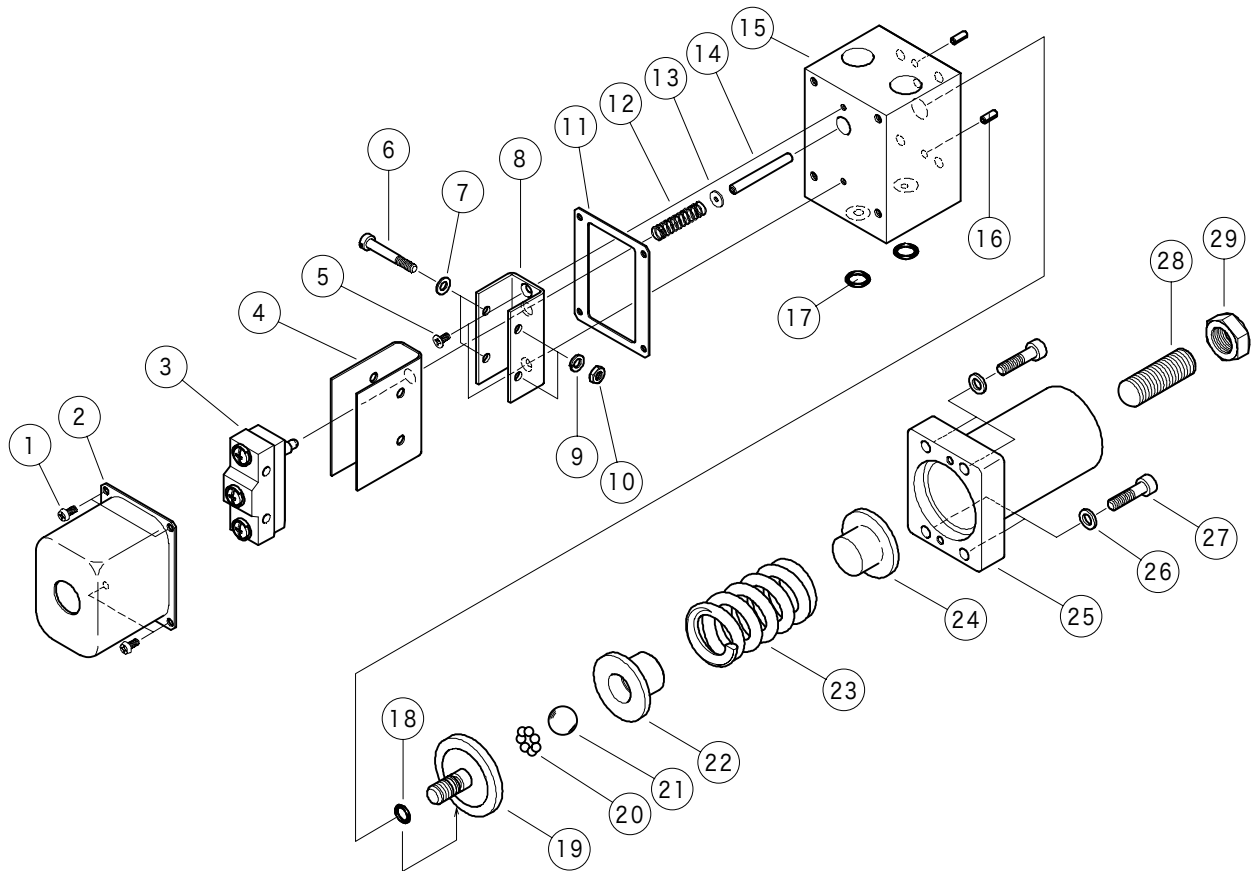
가
: 27~33 N·m

1. COMMON ● NORMALLY OPEN
○ NORMALLY CLOSED

2. COMMON ○ NORMALLY OPEN
● NORMALLY CLOSED



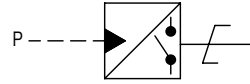
)* LA()



O			
17	007901117	AS568-011 (NBR, Hs70)	2
18	VA19495		1

ESP

Electronic pressure switch



●
●가 가

ESPP-H(2)-H(20)-10

1 2 3 4 5 6 7

1

2

P: R1/4
F: G1/4 O

3

L1: 0.02~1 MPa
L: 0.2~10 MPa
H: 0.7~35 MPa
H1: 1~50 MPa

4

: 1
2: 2
3: 1

5

H: DC24 V (10~28 V)
NPN DC30 V, 80 mA MAX.

(※1)HN: DC24 V (10~28 V)
PNP DC30 V, 80 mA MAX.
6 ()

6

(※2)20:

7

注)※1. HN 4가 (1 가)
※2. 6 20 4가3(1) 5가H

L
6

	L1	L	H	H1
MPa	2	20	52.5	75

: 가 (3)
: (on)

가	2~10 %F. S.
	1 %F. S. (TYP.)

: LED
: ()
: 3 (4) 2000 mm
: ±0.2 %F. S.

	±0.05 %F. S.
	±0.1 %F. S.

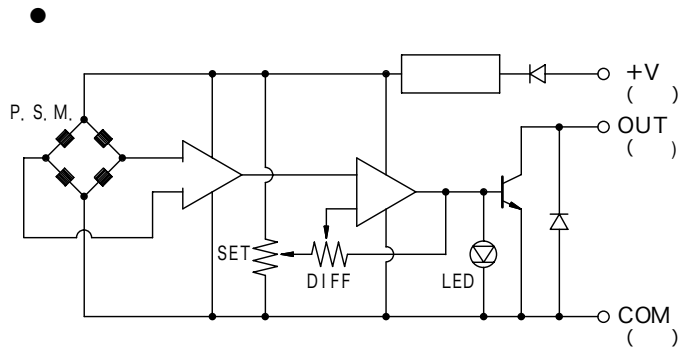
: 1 ms
: ±0.1 %F. S.

: -20~+70°C

: 5~90%RH

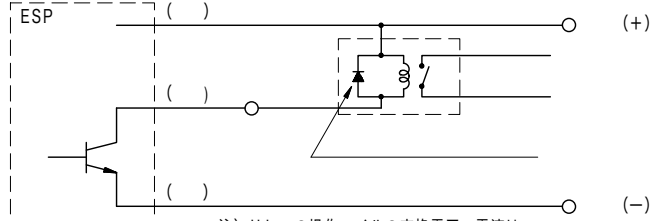
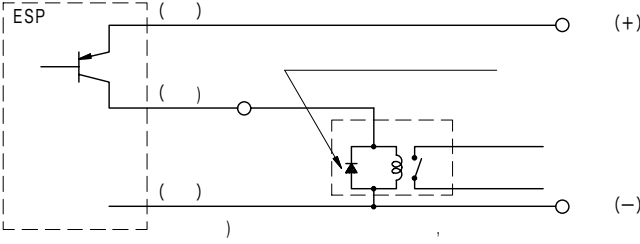
: 100 MΩ (at DC500Vmege)
: AC350 V 1 (5 mA)
: JIS D 1601 70 X, Y, Z
: JIS C 0912-1984 196 m/s² X, Y, Z
: 10⁷

JIS D 0203-D2 IEC-IP66	
JIS D 0203-M2	
:SUS630 SUS316	
:R1/4 G1/4	
440 g	
200 g	

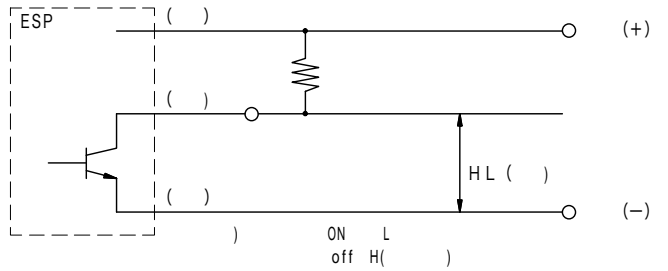
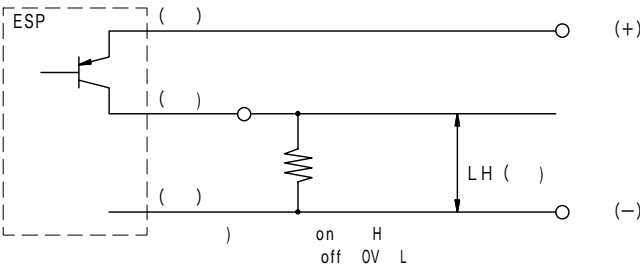
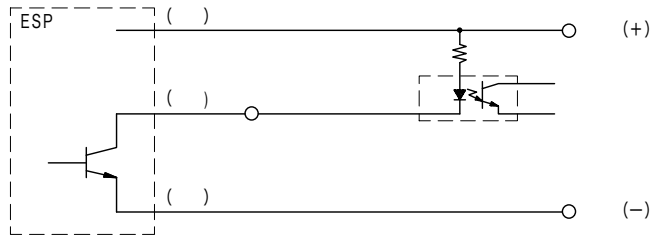
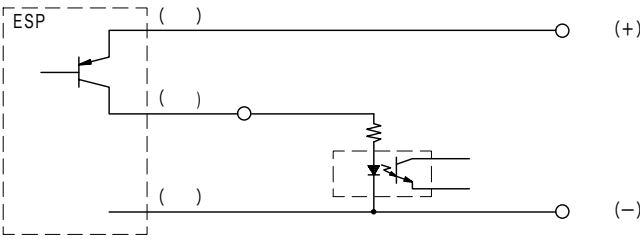


● HN (PNP-VDE)

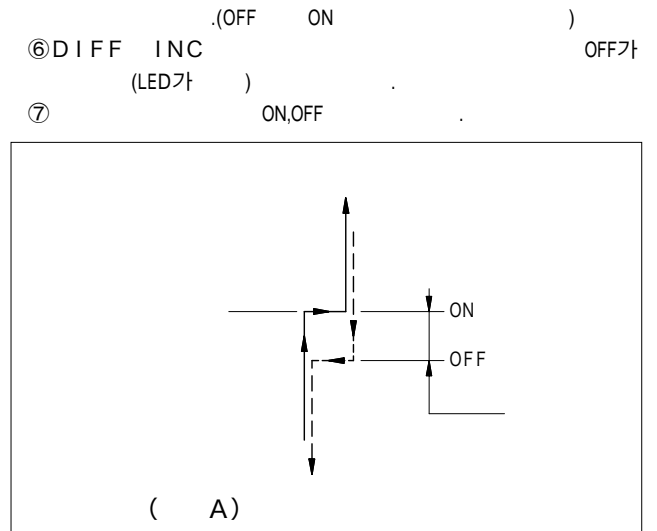
● H (NPN)



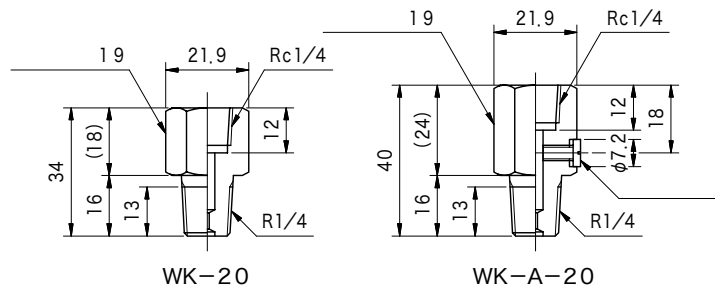
注) リレーの操作コイルの定格電圧・電流はトランジスタの定格内であること。



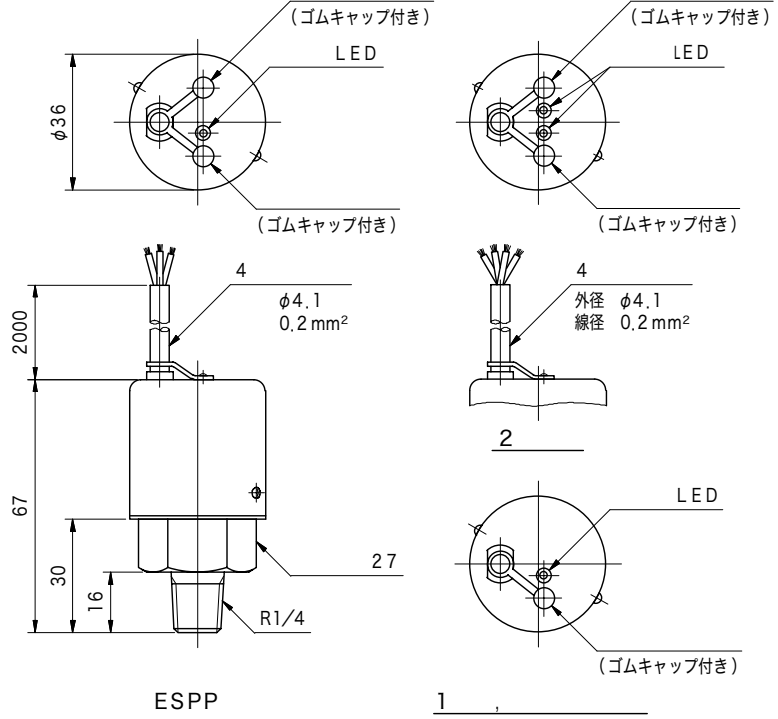
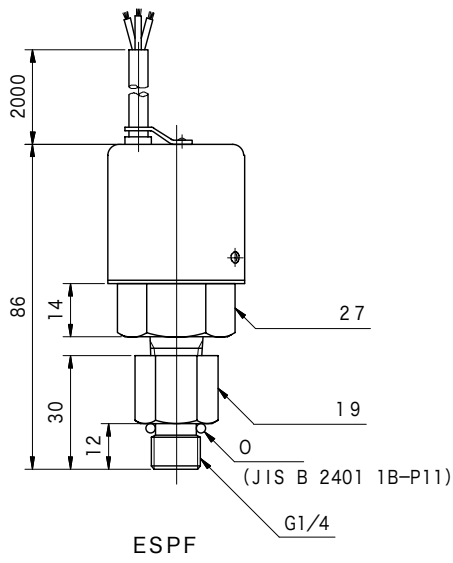
- 2-5
-
- (A)
- ① (SET) UP (DIFF) INC
- ② on 가
- ③ SET UP ON (LED가)
- ④ DIFF INC
- ⑤ OFF



- (DC24 V)
- TSP-100: AC100 V
- TSP-101: AC200 V
-
- WK-20
- WK-A-20



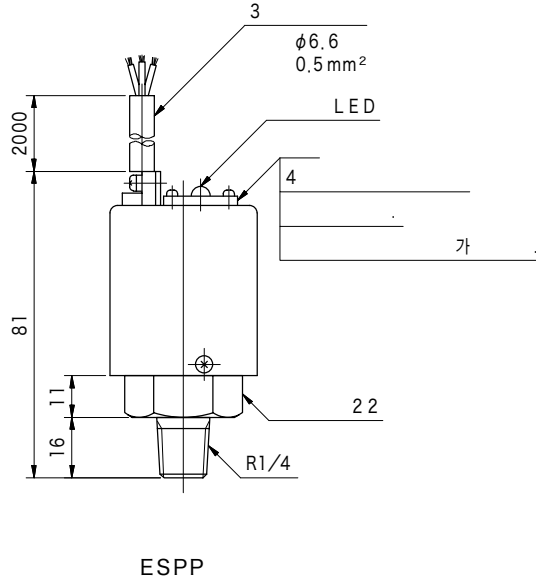
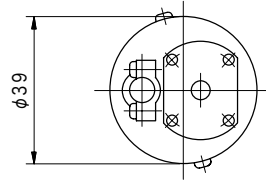
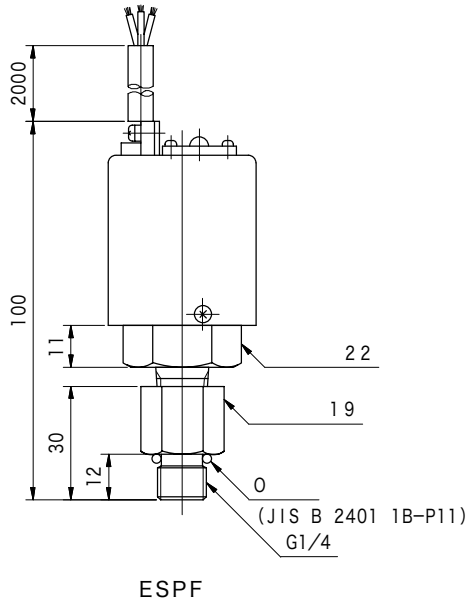
ESP**-(*)-*(*)-10()



(1)	(2)
(+)	(+)
(1)	(1)
(-)-COMMON	(2)
	(-)-COMMON



ESP*-H3-H20-10()



ETP

Pressure sensor (Pressure transmitter)



●ETP

ETPP-H1-HLD-W-(C)-11

1 2 3 4 5 6 7 8 9

- | | | |
|---|---|--|
| <p>1
2
P:R1/4
F:G1/4(O)</p> <p>3
L1:0~1 MPa
L:0~10 MPa
M:0~20 MPa
H:0~35 MPa
H1:0~50 MPa</p> | <p>4
H:DC24V
G:DC±15V
E:DC15V</p> <p>5
「 」</p> <p>6
「 」</p> <p>7
W:</p> | <p>8 Calibration
: Momentary
C : Toggle</p> <p>9</p> |
|---|---|--|

L
10

	MPa	MPa		()
L1	0~1	2	H	DC24 V ±15 % 35 mA
L	0~10	20	G	DC±15 V ±5 % 30 mA
M	0~20	40	E	DC15 V ±5 % 35 mA
H	0~35	52.5		
H1	0~50	75		

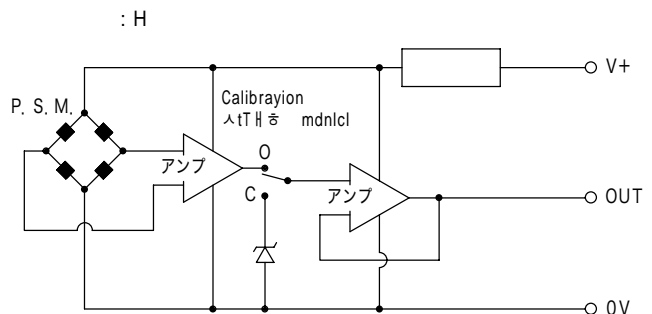
		Calibration
H	0~10 V DC (10 kΩ)	10 V
L	0~5 V DC (10 kΩ)	5 V
A	4~20 mA DC (350 Ω)	20 mA

	(※1)	
C (※2)	±0.25 % F.S.	±0.025 % F.S./°C
D	±0.5 % F.S.	±0.05 % F.S./°C

注) ※1:精度には直線性、繰返し性、ヒステリシスを含まず。
※2:精度記号Cは圧力検知範囲記号L1、L、Mのみに適用します。

電圧変動による影響:定格電圧において±0.1%F.S.以内

- : -20~+70°C (0~+70°C)
- : 5~95%RH
- : 100 MΩ (DC500 Vmege)
- : AC350 V 1
- : JIS D 1601 70 X, Y, Z 4H
- : JIS C 0912-1984 196 m/s² X, Y, Z
- : 10⁷
- : (JIS C 0920)
- : SUS630およびSUS316
- : 320 g



●

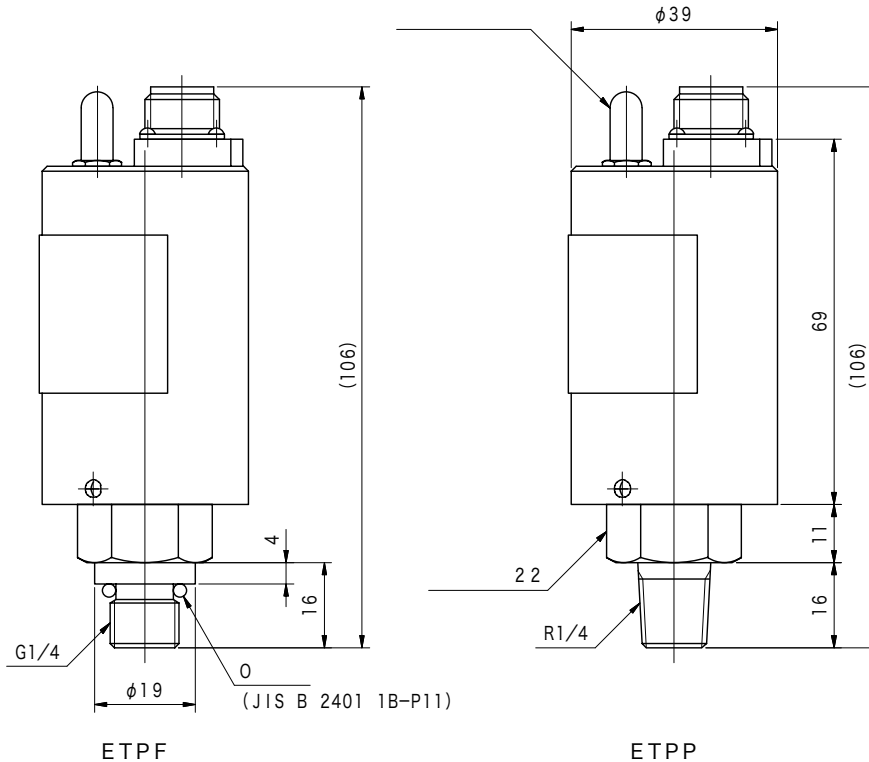
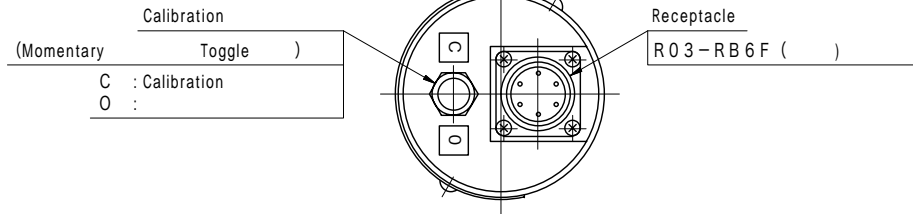
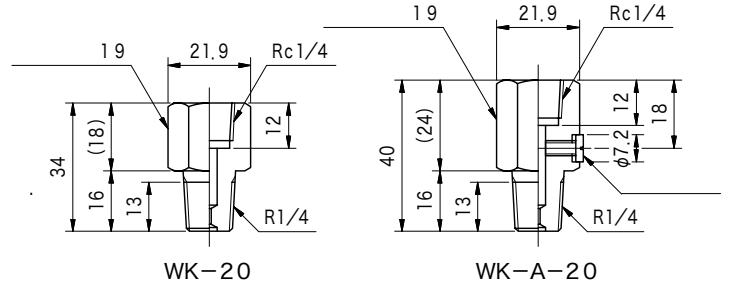
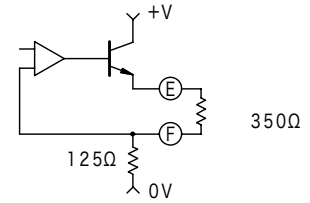
● 4~20mA ()

● (5 φ6.2, 0.18mm²)

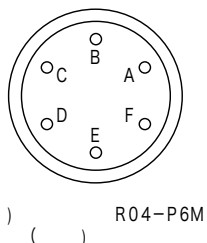
- CAY- 2-10: 2 m
- CAY- 3-10: 3 m
- CAY- 6-10: 6 m
- CAY-10-10: 10 m
- CAY-20-10: 20 m

● (DC24 V)
 TSP-100: AC100 V
 TSP-101: AC200 V

●



Receptacle



0~5, 0~10 V

		DC24 V	DC15 V
A	赤	+24V()	+15V()
B	青		-15V()
C	白	0 V	0 V
D			
E	緑	出力	
F			

4~20 mA

		DC24 V	DC15 V
A	赤	+24V()	+15V()
B	青		-15V()
C	白	0 V	0 V
D			
E	緑	出力(+)	出力(+)
F	黄	出力(-)	出力(-)

TXS

Pressure monitors



●TXS

가 , 3-1/2

●ETP

●

TXS-6505-1-21

1 2 3

1

TXS-6505:

2

I : 4~20 mA

V : 0~5 V V1 : 0~10 V

3

21:TXS-6505

		TXS-6505
		DC12 V~DC30 V
	DC12 V	90 mA
	DC15 V	70 mA
	DC24 V	55 mA
		I : 4~20 mA, V : 0~5 V, V1 : 0~10 V
A-D		
NMRR	サンプリング・レイト2.5回/秒	40dB標準50/60 Hz
	Ta=+23 °C±1 °C 20~85%RH, 1	± (0.15 % of Irdgl+1 digit)
	Ta=0~+50 °C	± (100 ppm of Irdgl+0.1 digit) /°C以内
	Ta=+23 °C±1 °C 20~85%RH	2.5 /
		5
HOLD		、5 V-CMOS・LSTTL
		() (mV)
		DC1 mA
		7 LED
		14.2 mm
		「-」
over flow	> +1999	「1」
		DP1~DP3 가 ()

		0~55 °C
		20~85 %RH
		-20~+70 °C
	Ta ≤ 40 °C	20~95 %RH
CMv	OV-INPUT Lo (GND)	±1000 V
	-DPM OV -DPM GND -DPM LO	AC2000 V 1
	-DPM OV -DPM GND -DPM LO	500 MΩ (DC500 Vmege)

TXS-6505

