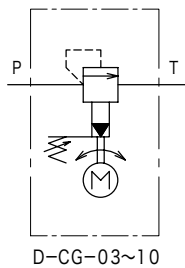
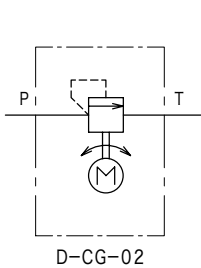
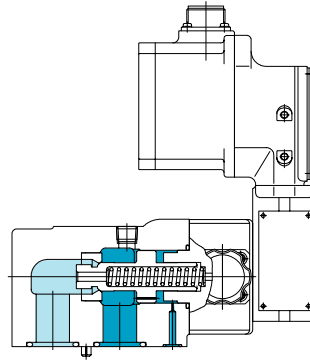
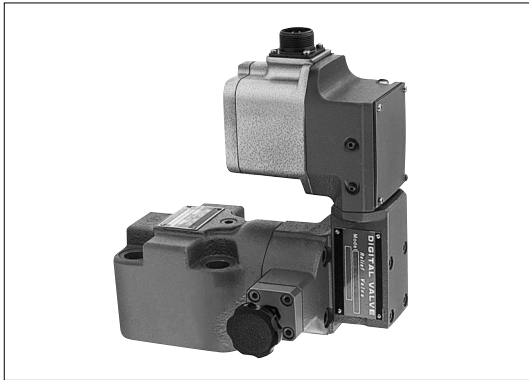


D-CG

Digital relief valves



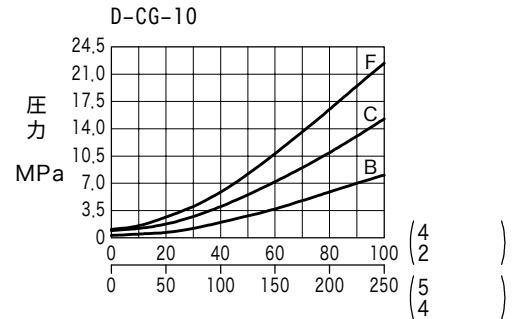
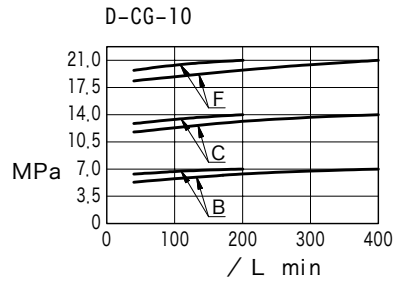
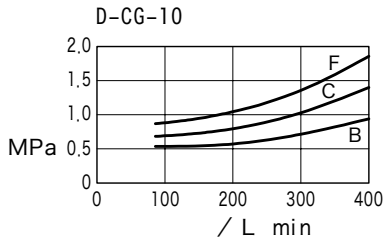
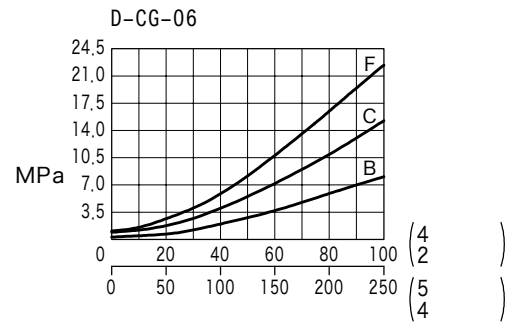
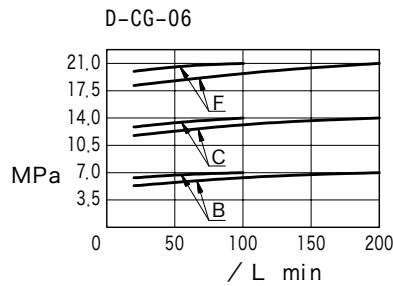
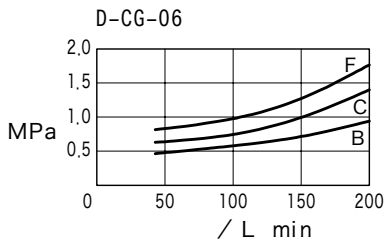
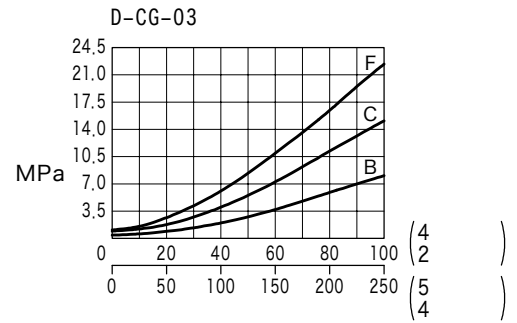
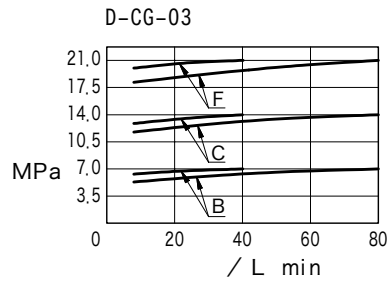
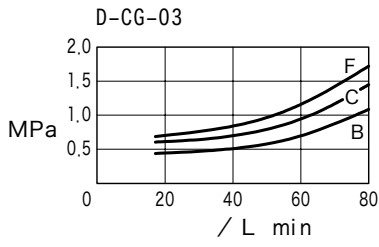
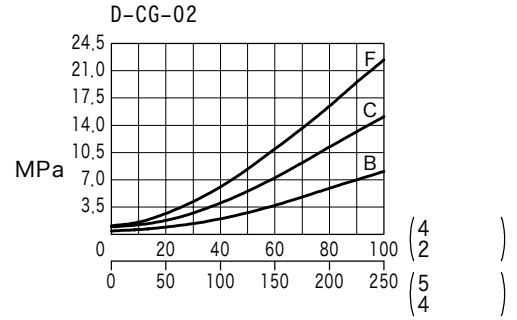
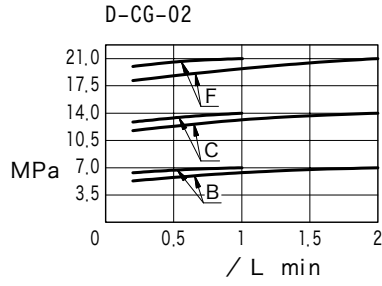
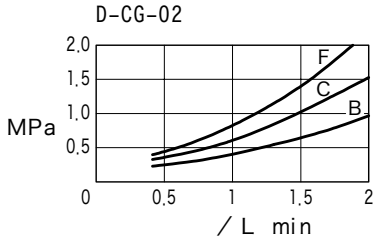
D-CG-02-C-250-20

1 2 3 4 5

- 1
 - 2
 - 3
 - 4
 - 5
- 100: 100 200 (4)
 250: 250 (5)

K
12

		02	03	06	10
MPa		21			
L/min		1	40	100	200
L/min		2	80	200	400
Mpa	B	0.4~7	0.6~7	0.6~7	0.6~7
	C	0.6~14	0.8~14	0.8~14	0.9~14
	F	0.8~21	0.9~21	1.0~21	1.1~21
13page					
0.1%					
0.1%					
● ISO VG 32 30~60°C %	B	4 %	6 %	6 %	6 %
	C	3 %	3 %	4 %	4 %
	F	4 %	1 %	1.5 %	2 %
()	2	100 (4)			
	1-2	200 (4)			
	4	250 (5)			
		2	(DC-B2B)	900PPS,	1.1ms/
		(110ms/)			
±3 %					
Mpa(kgf/cm ²)		1			
() μm		25			
kg		3.1	7.9	10	13.6



가

●D-CG-03~10d

() 180

K 16Page

34

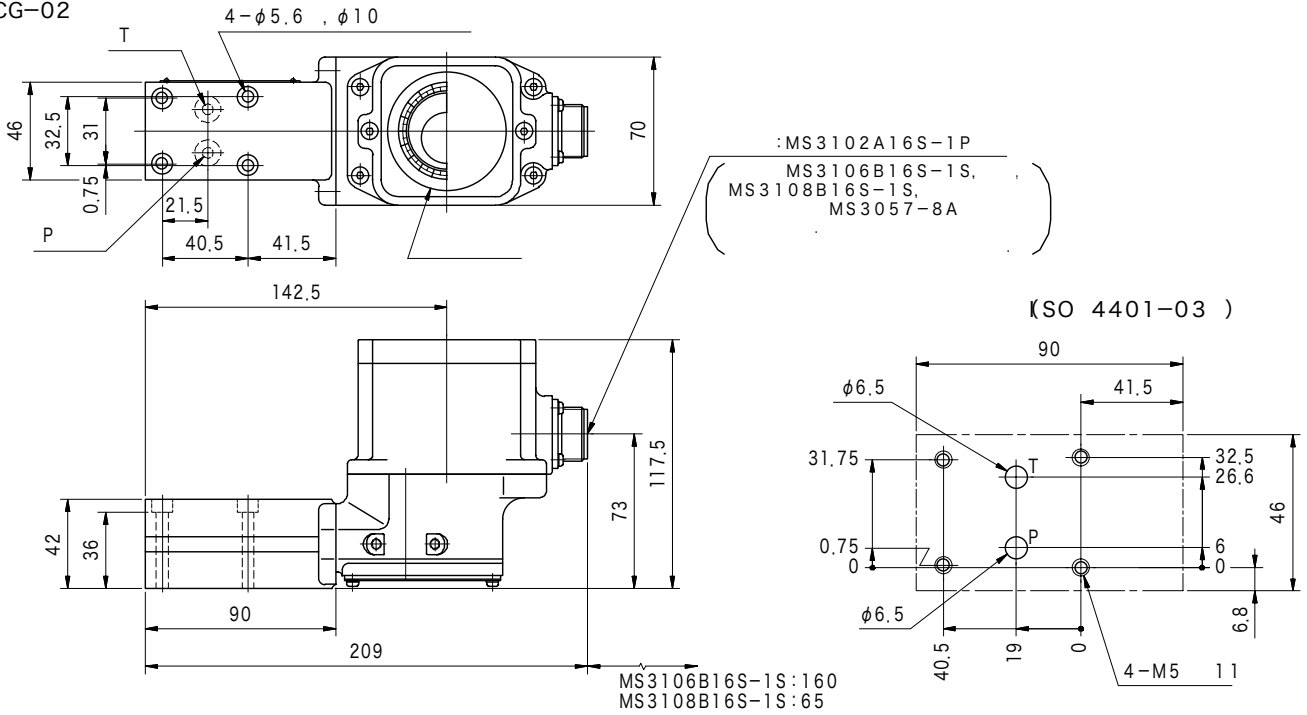
(JIS B 1176 12.9)

	サブプレート形式	Rc			4
D-CG-02	* DGMS-3-1E-10-T-JA-J	3/8	M5 × 45	—	4
	* DGVM-3-10-T-JA-J				
D-CG-03	TCGMT-03-10-JA-J	3/8	M12 × 80	1/2-13UNC × 82.5	4
D-CG-06	CGM-06-10-JA-J	3/4	M16 × 85	5/8-11UNC × 82.5	4
D-CG-10	CGM-10-10-JA-J	1-1/4	M20 × 100	3/4-10UNC × 101.6	4

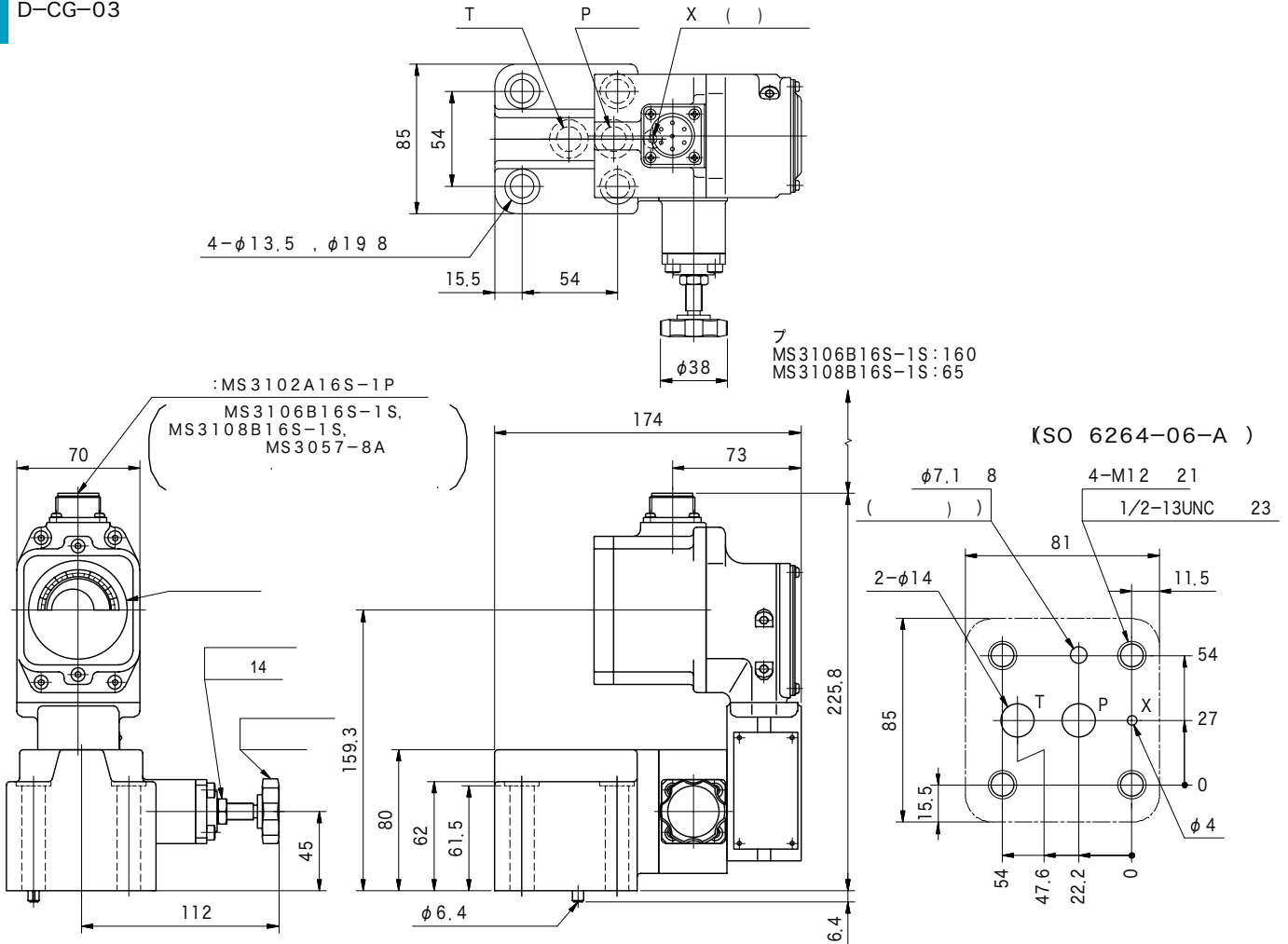
D-CG-02 : 7~8 N·m
 D-CG-03 : 72~88 N·m
 D-CG-06 : 90~110 N·m
 D-CG-10 : 180~220 N·m

가
 (*)
 Q3,Q8 page

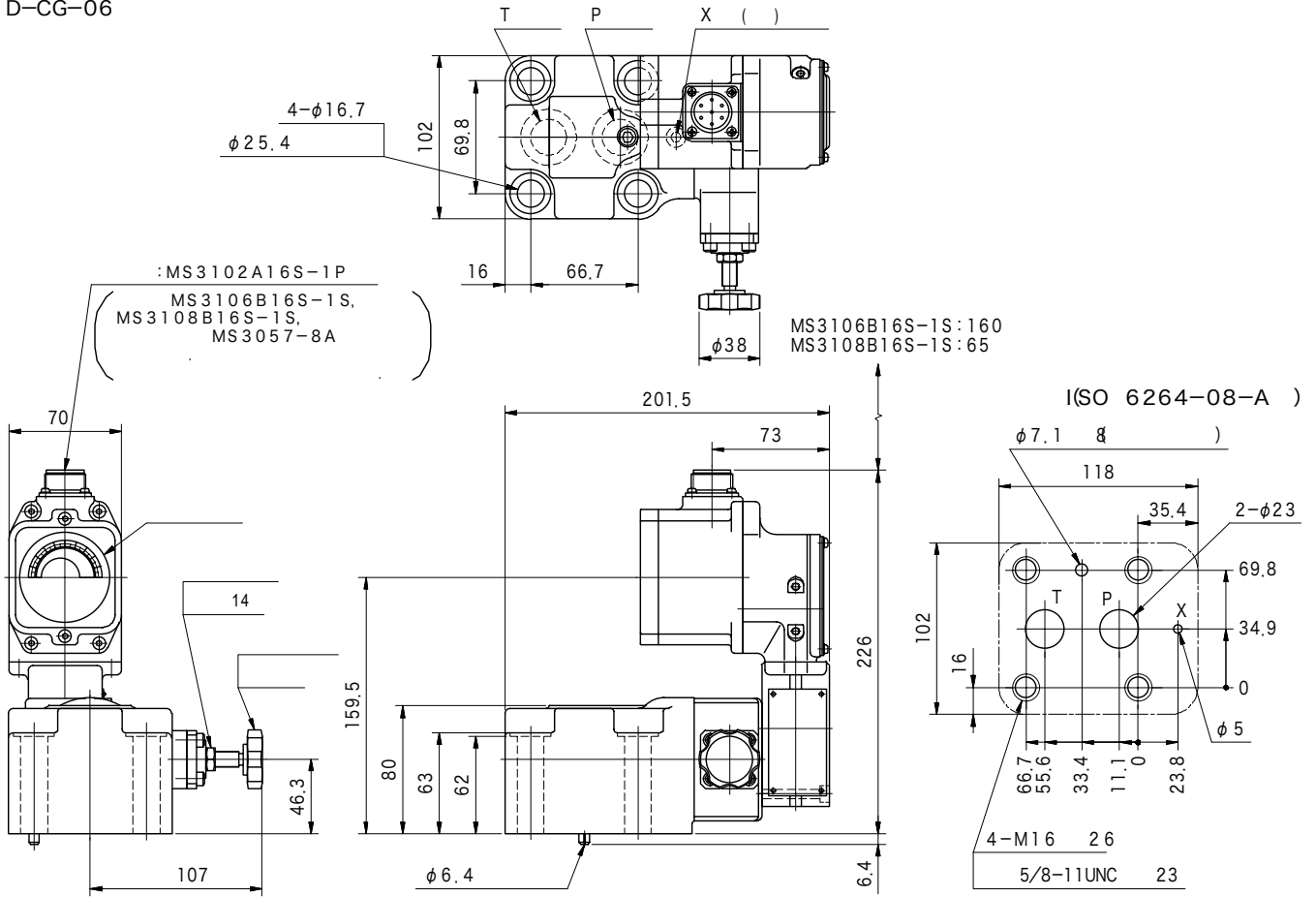
D-CG-02



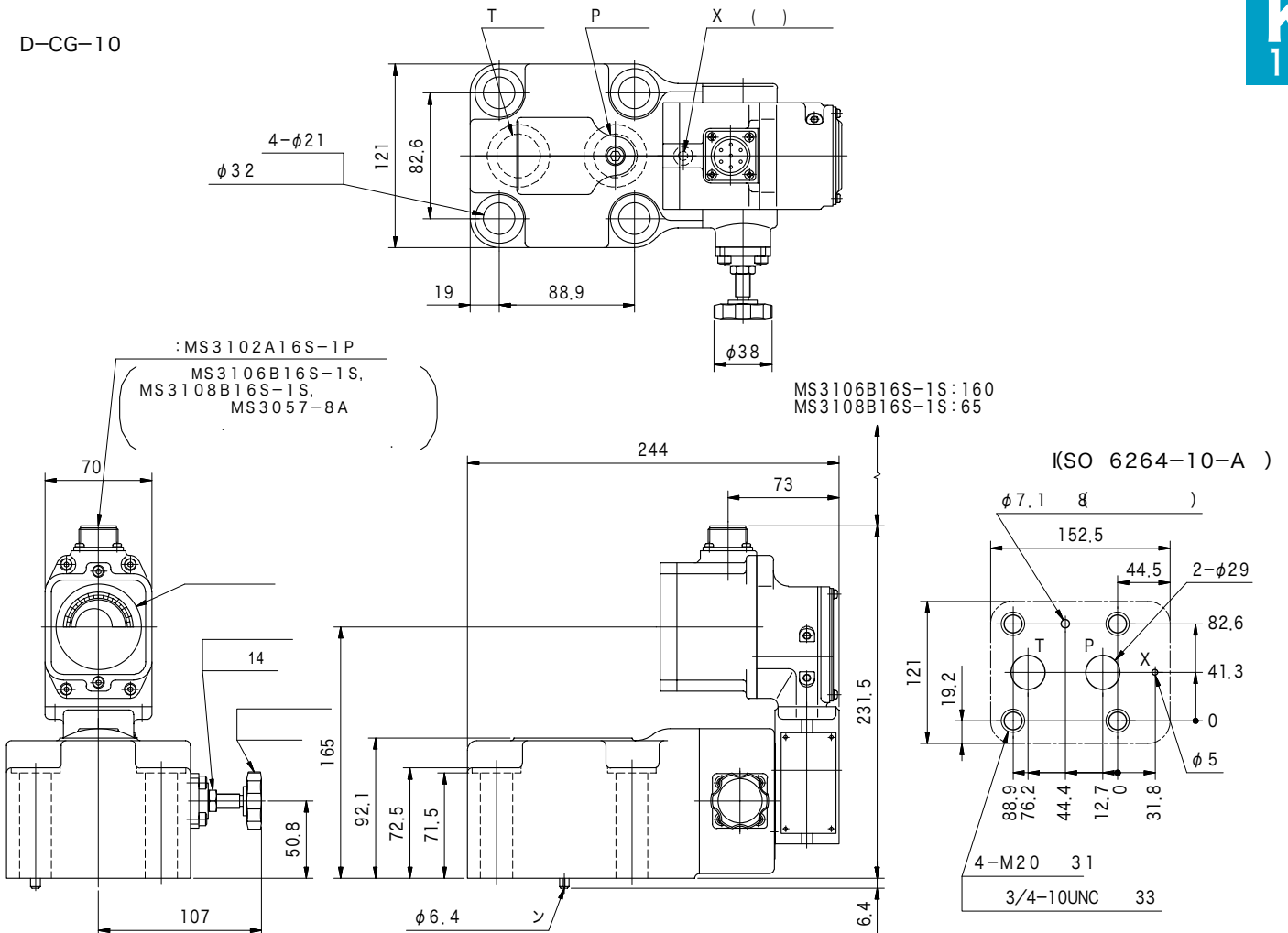
D-CG-03



D-CG-06

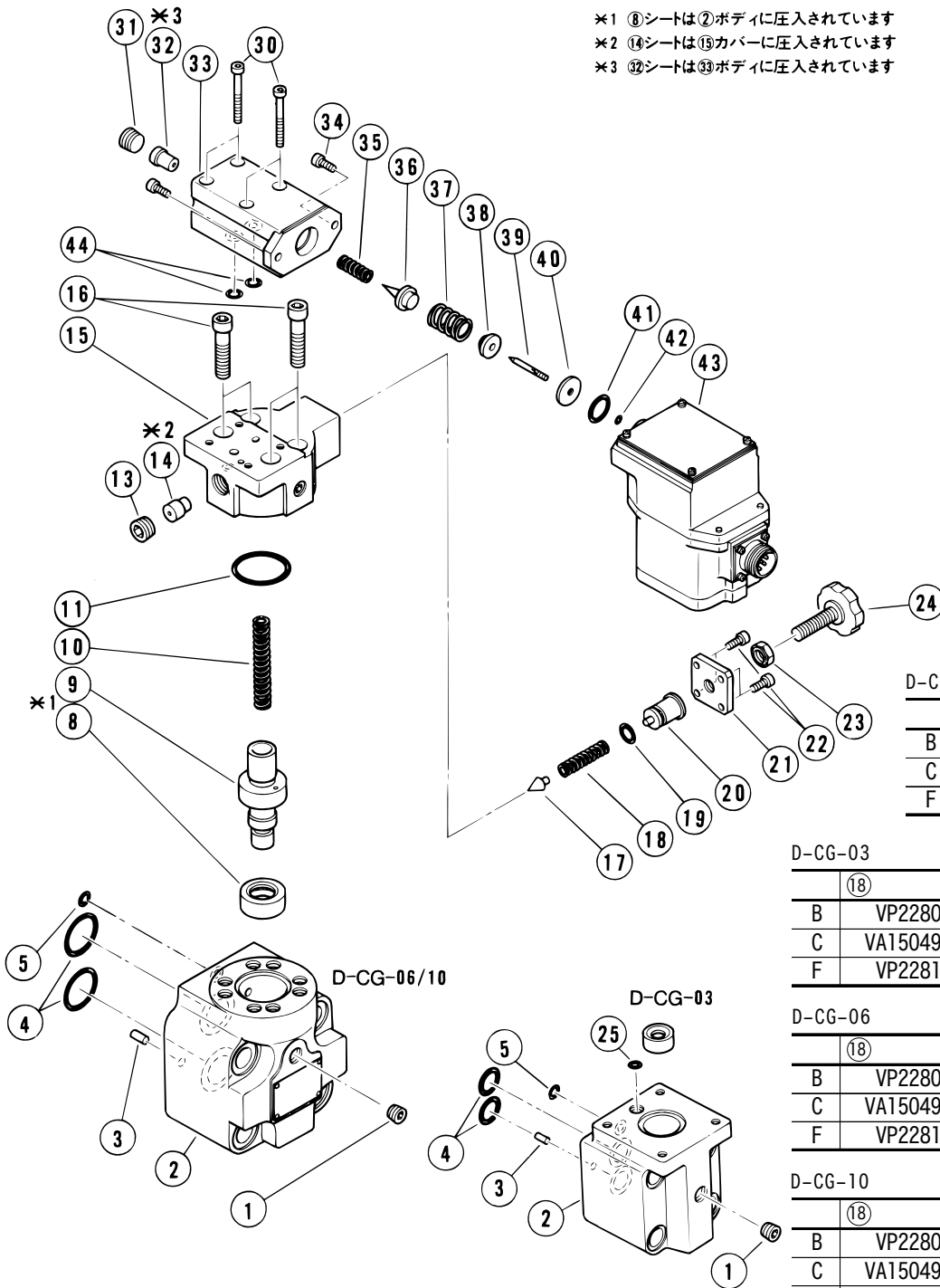


D-CG-10



D-CG-02 (31~44)

- ※1 ⑧シートは②ボディに圧入されています
- ※2 ⑭シートは⑮カバーに圧入されています
- ※3 ⑳シートは⑳ボディに圧入されています



D-CG-02

	⑳	㉑
B	VA25549	VA25552
C	VA26023	VA25551
F	VA24813	VA25551

D-CG-03

	⑳	㉑	㉒
B	VP2280	40013327	VA25553
C	VA15049	VA25550	VA24816
F	VP2281	VA24813	VA24816

D-CG-06

	⑳	㉑	㉒
B	VP2280	VA25549	VA25552
C	VA15049	VA26023	VA25551
F	VP2281	VA24813	VA25551

D-CG-10

	⑳	㉑	㉒
B	VP2280	VA25549	VA25553
C	VA15049	VA25550	VA24816
F	VP2281	VA24813	VA24816

0

D-CG-02

Part No.	Code	Description	Qty
41	007901817	AS568-018 (NBR, Hs70)	1
42	007900717	AS568-007 (NBR, Hs70)	1
44	007901217	AS568-012 (NBR, Hs70)	2

D-CG-03

Part No.	Code	Description	Qty
4	007911517	AS568-115 (NBR, Hs70)	2
5	007901117	AS568-011 (NBR, Hs70)	1
11	007912217	AS568-122 (NBR, Hs70)	1
19	007901517	AS568-015 (NBR, Hs70)	1
25	007900917	AS568-009 (NBR, Hs70)	1

)・㉑, ㉒, ㉓ D-CG-02

D-CG-06

Part No.	Code	Description	Qty
4	007921619	AS568-216 (NBR, Hs90)	2
5	007901219	AS568-012 (NBR, Hs90)	1
11	VA11168	—	1
19	007901517	AS568-015 (NBR, Hs70)	1

)・㉑, ㉒, ㉓ D-CG-02

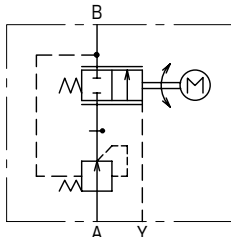
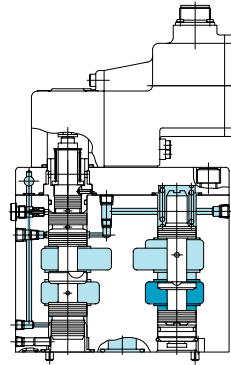
D-CG-10

Part No.	Code	Description	Qty
4	007922019	AS568-220 (NBR, Hs90)	2
5	007901219	AS568-012 (NBR, Hs90)	1
11	007922419	AS568-224 (NBR, Hs90)	1
19	007901517	AS568-015 (NBR, Hs70)	1

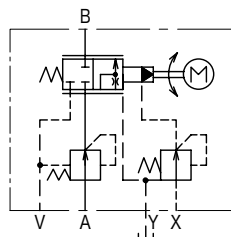
)・㉑, ㉒, ㉓ D-CG-02

D-F(R)G

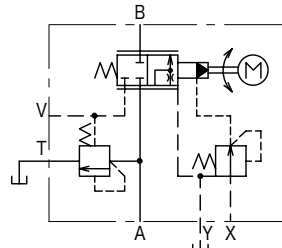
Digital flow control valves



D-FG-01



D-FG-02~10



D-FRG-02~10

() D-F (R) G-10
V () 가

D-F(R)G-03-EX-130-250-20

1 2 3 4 5 6

1

D-FG: (D-FG-01 , .)

D-FRG:

2

「 」

3

: (D-FG-01)
EX: ()

4

「 」

5

100:100 200 (4)
250:250 (5)

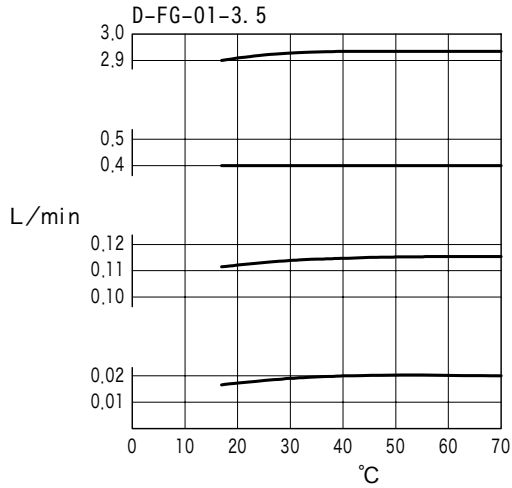
6

D-FG-01 10 , 20

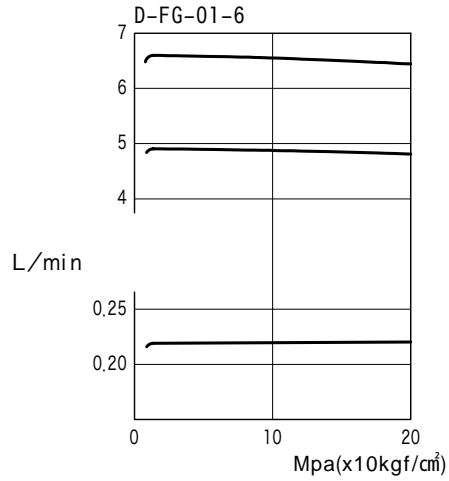
	01										02										03					06					10		
	D-FG										D-FG					D-FRG					D-FG		D-FRG			D-FG		D-FRG					
MPa(kgf/cm ²)	21										21										21					21					21		
L/min	0.3	1	2.5	3.5	6	8	10	6	15	25	40	65	6	15	25	40	65	90	130	90	130	130	170	250	170	250	375	500	500	1000			
L/min	0.03 (*1 0.02)										0.2	0.2	0.2	0.4	0.6	0.7	0.7	0.7	0.9	1.1	1.4	1.8	0.9	1.2	2	2.5	3	1.7	2.5	5	6	6	8
MPa(kgf/cm ²)	—————										2~21 (3MPpa(30kgf/cm ²))												
v (L/min 3 MPa)	—————										1.2										1.8					2.5					3.5		
	0.5%																				0.1 %												
(ISO VG 32 30~60°C)																					0.2 %												
()	2										100 (4)										100 (4)												
	1-2										200 (4)										200 (4)												
	4										250 (5)										250 (5)												
	2										(DC-B2B)										900 pps,												
	1.1ms/										(110ms/)																						
											±3 %																						
MPa(kgf/cm ²)	0.1										0.35																						
()	10 μm ()										25 μm ()																						
kg	6										10.5										18.5					34					68		

* 1. D-FG-01 10MPa(100kgf/cm²) 0.02L/min

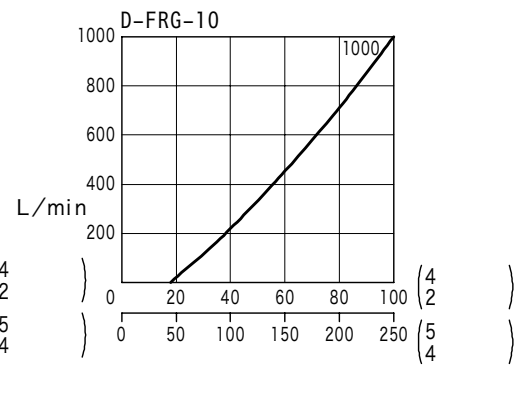
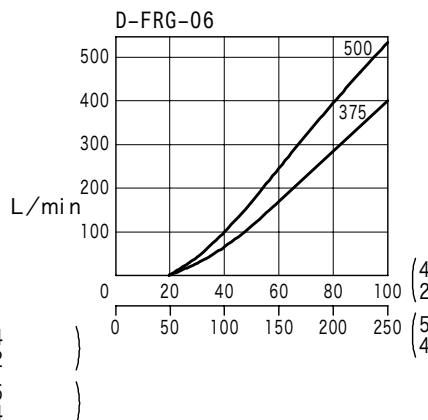
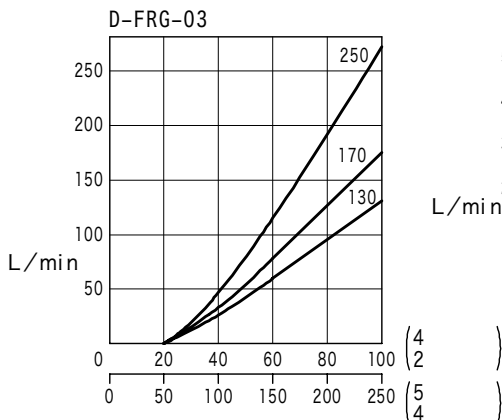
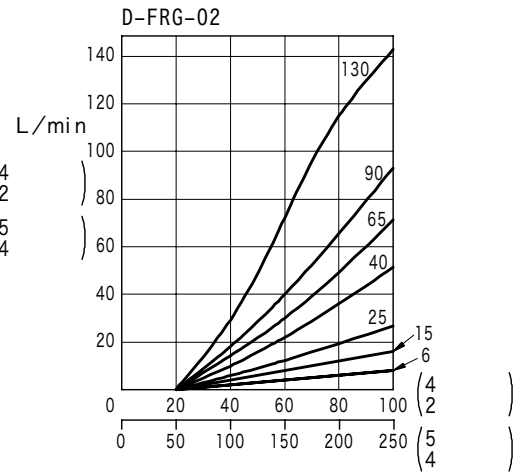
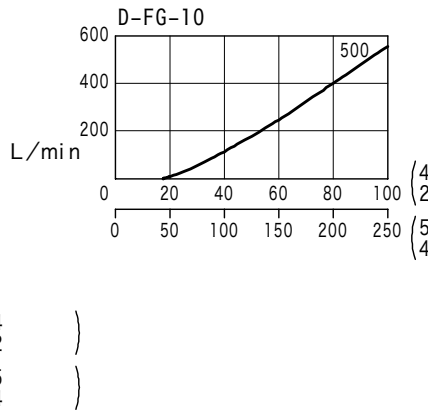
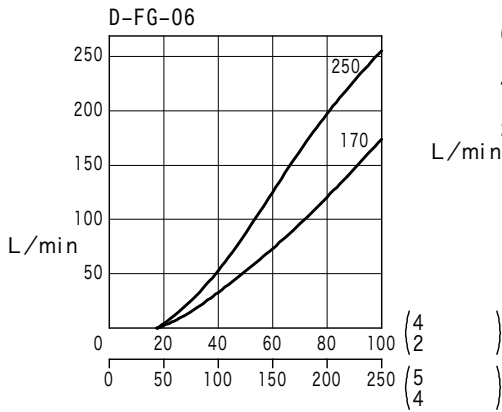
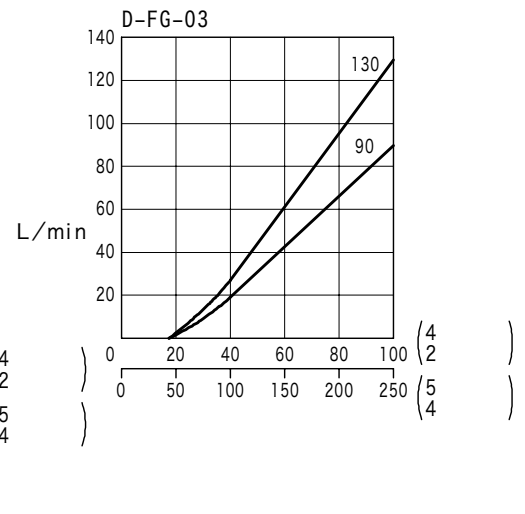
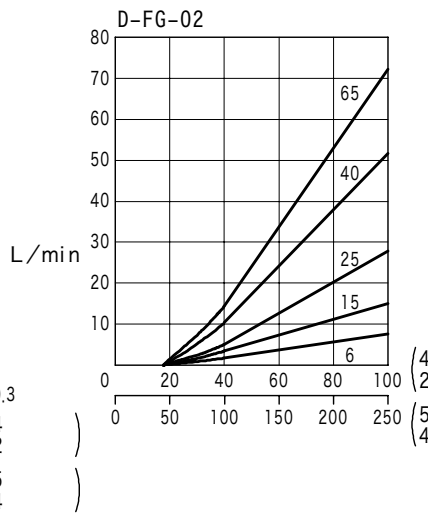
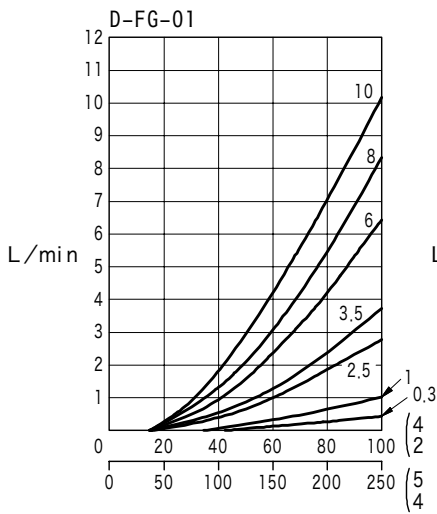
(VG32) - ()



- ()



- ()



- 가
- 가 02
- 가
- 가
- 가
- D-FG
- (10kgf/cm²)
- 1Mpa

D-FRG

0.6Mpa(6kgf/cm²)가

● Mpa(3.5kgf/cm²)

● 06,10

0.35

650, 500 PPS

(JIS B 1176 12.9)

		Rc		
D-FG-01	* DGMS-3-1E-10-T-JA-J	3/8	M5 × 100	4
	* DGVM-3-10-T-JA-J			
D-F (R) G-02	D-FRGM-02-10	3/4	M10 × 70	4
D-F (R) G-03	D-FRGM-03-10	1-1/4	M12 × 90	2
			M12 × 110	2
D-F (R) G-06	D-FRGM-06-10	1-1/2	M20 × 110	2
			M20 × 150	2
D-F (R) G-10			M20 × 130	2
			M20 × 190	2

-
- 가
- (*)
- Q8, Q10 page

D-FG-01 : 7~8 N·m

D-F (R) G-02 : 50~60 N·m

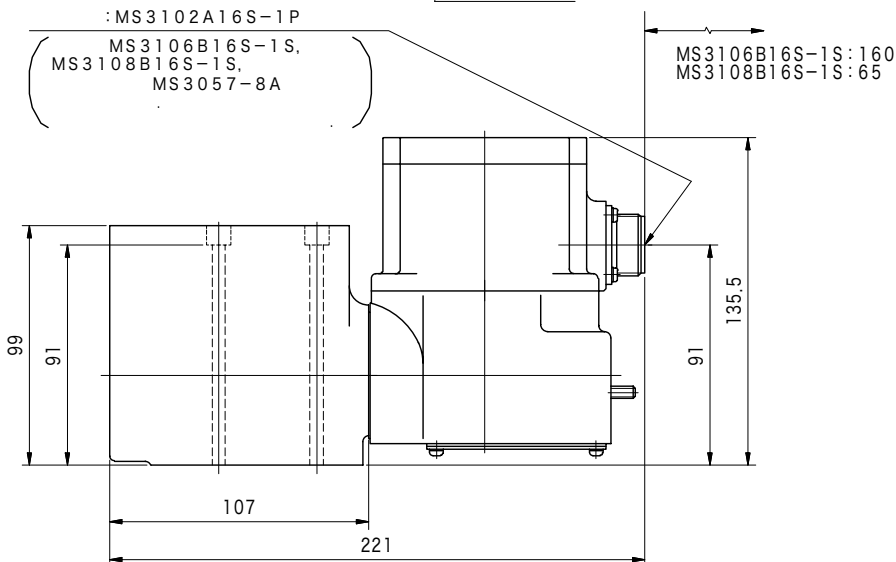
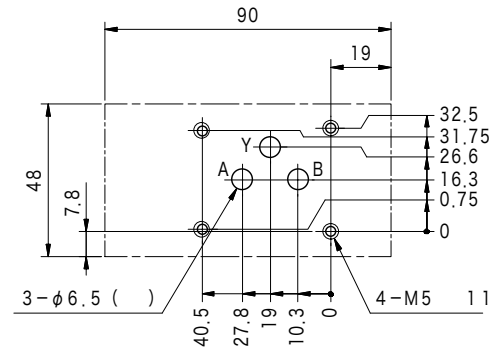
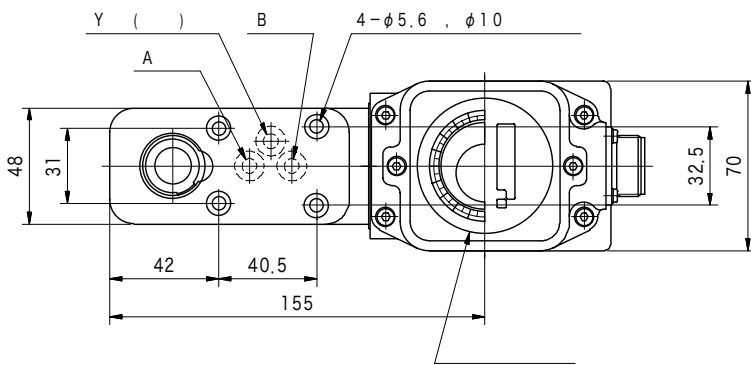
D-F (R) G-03 : 75~81 N·m

D-F (R) G-06 : 230~290 N·m

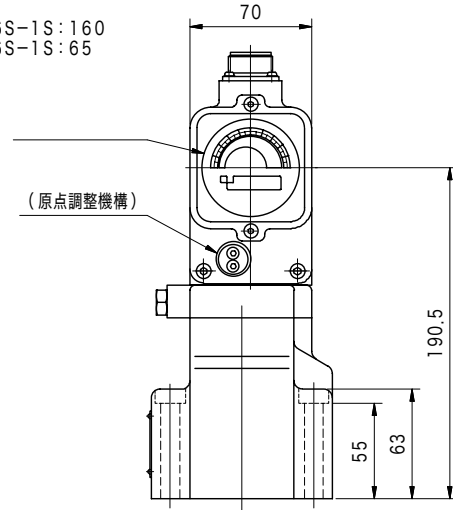
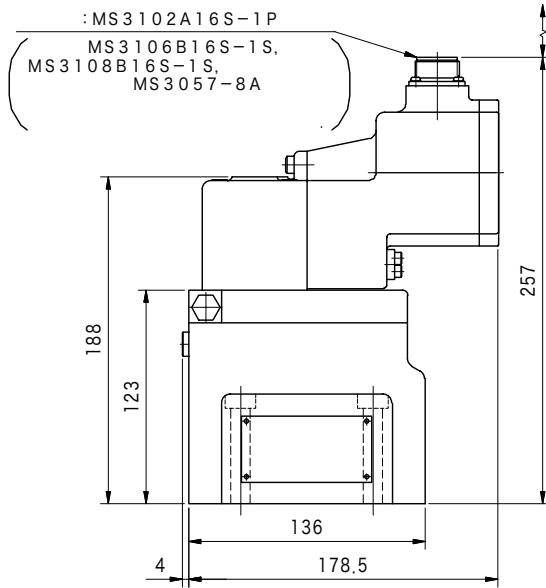
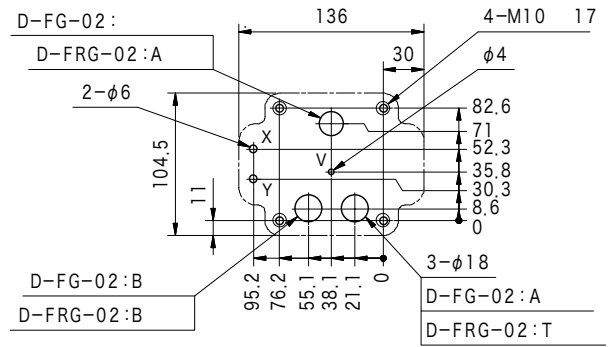
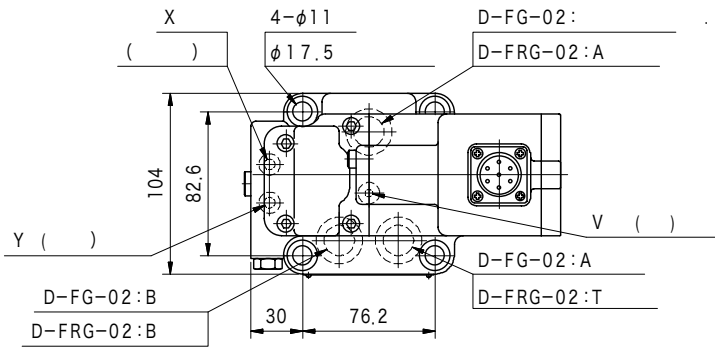
D-F (R) G-10 : 230~290 N·m

D-FG-01

(SO 4401-03)

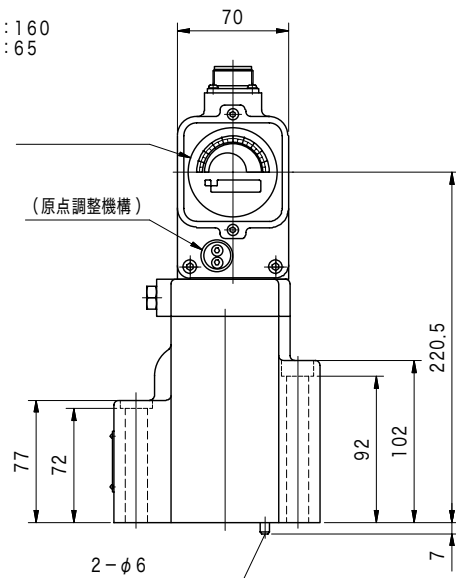
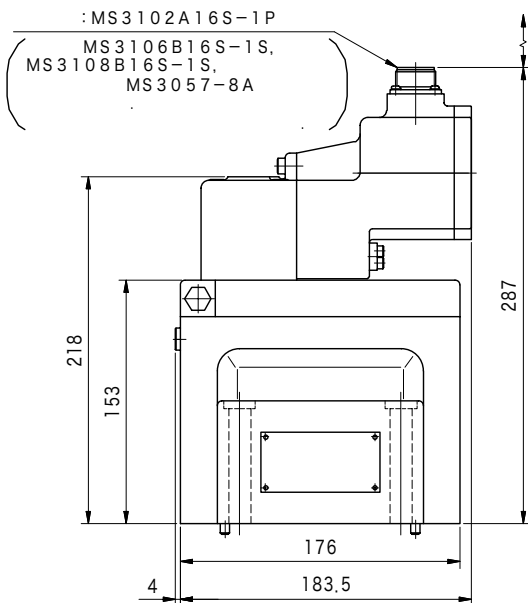
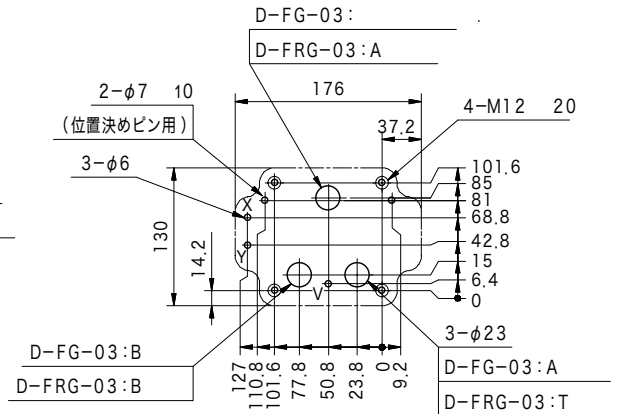
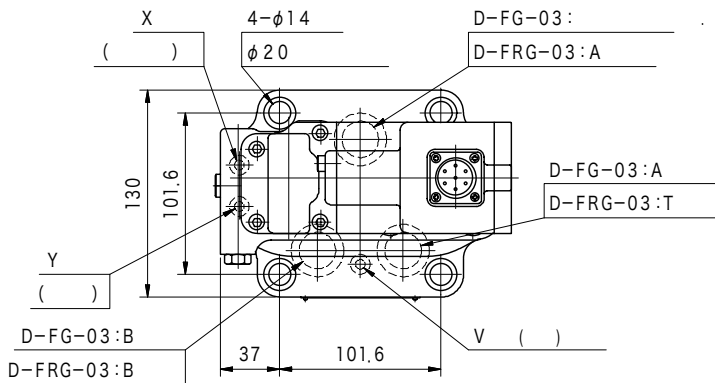


D-F(R)G-02

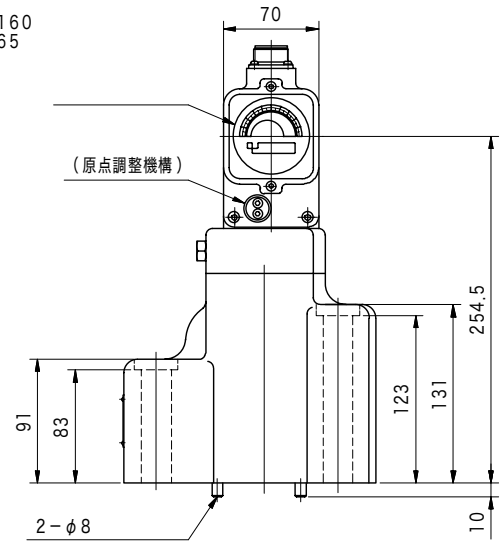
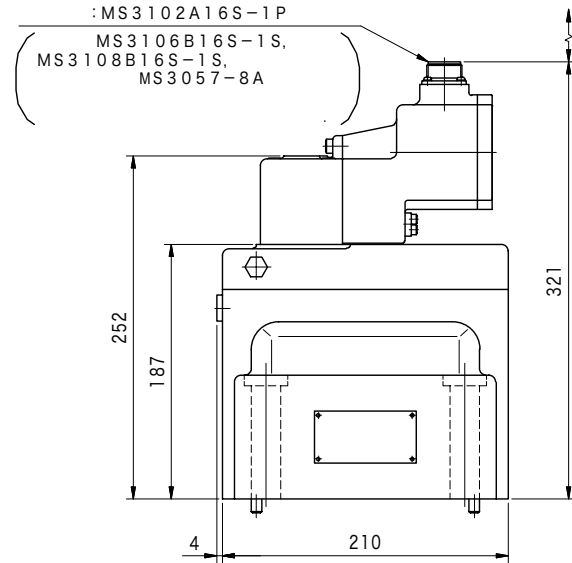
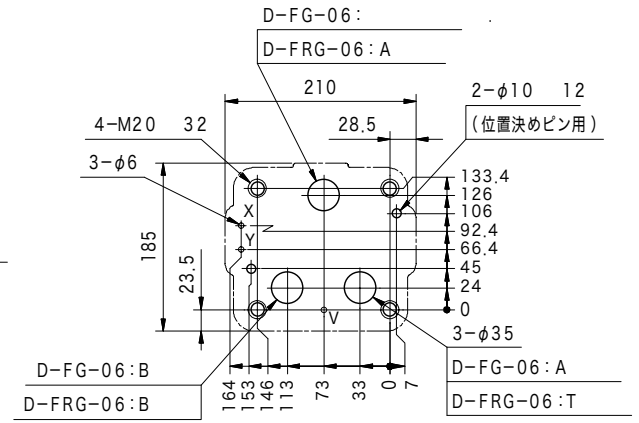
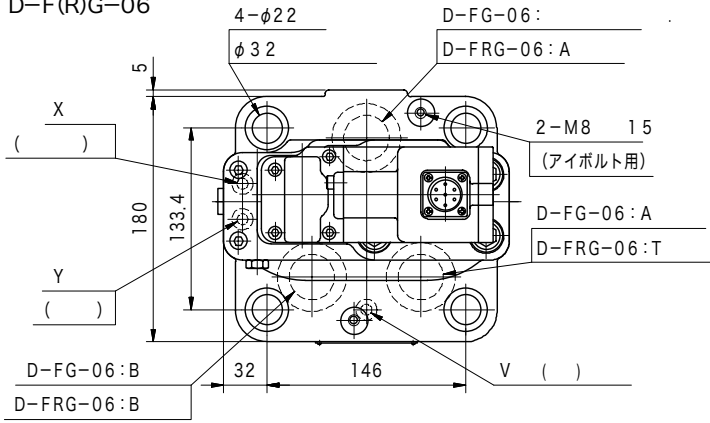


K
20

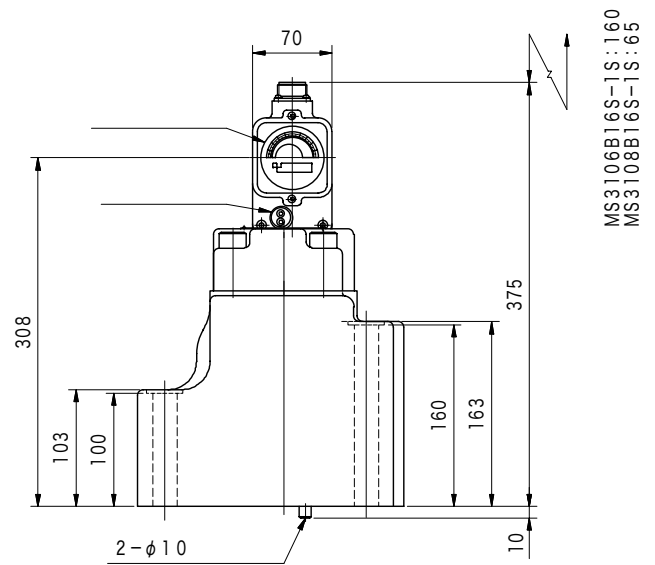
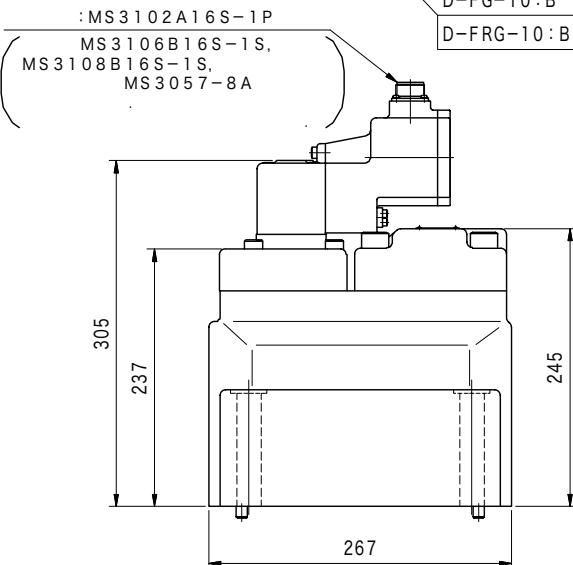
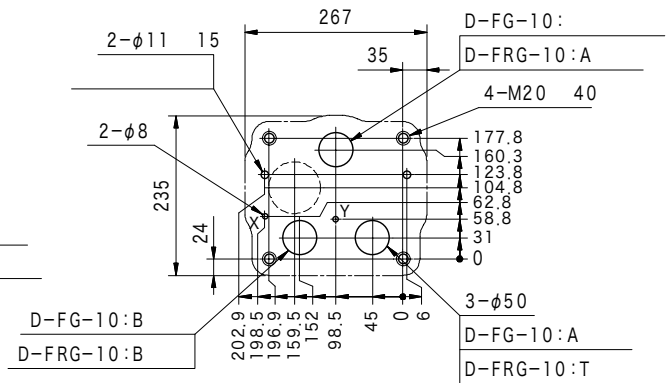
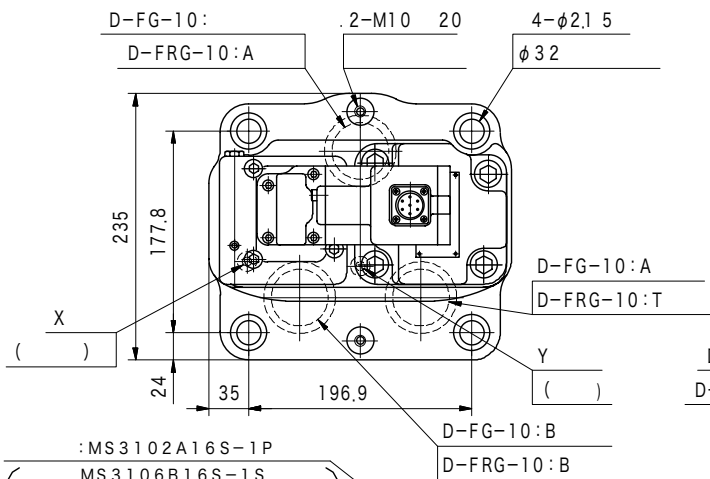
D-F(R)G-03

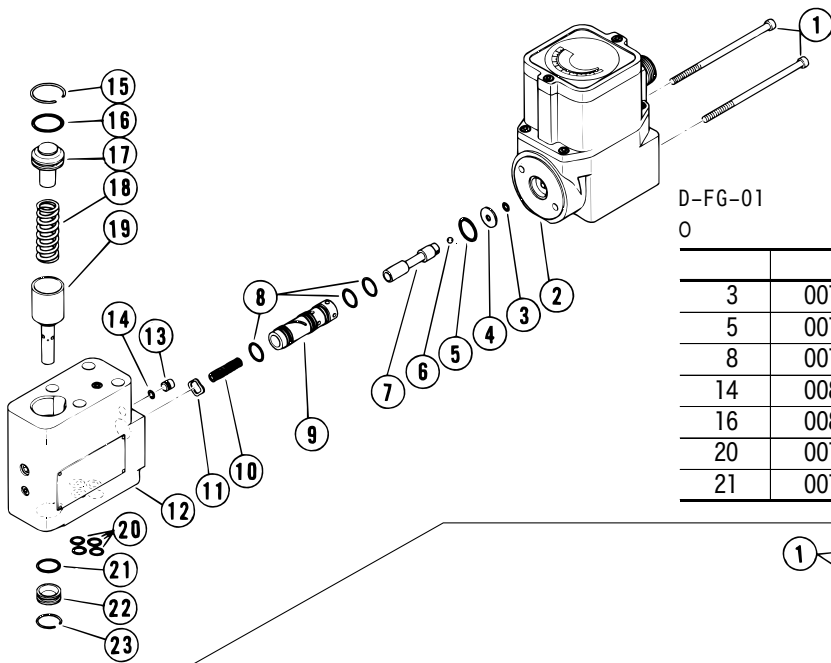


D-F(R)G-06



D-F(R)G-10



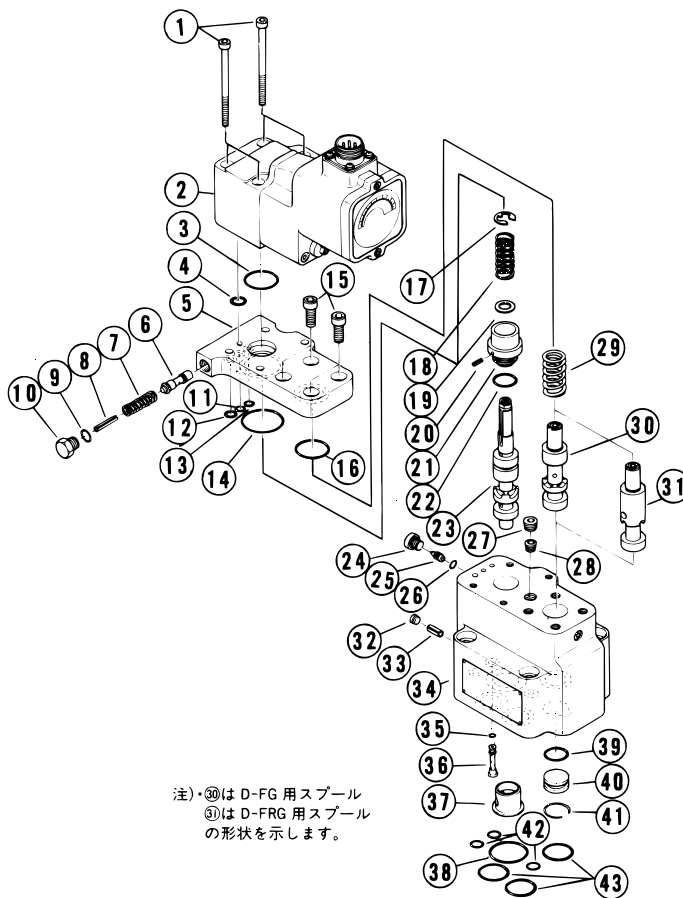


D-FG-01
O

3	007900717	AS568-007 (NBR, Hs70)	1
5	007901717	AS568-017 (NBR, Hs70)	1
8	007901419	AS568-014 (NBR, Hs90)	3
14	008000519	JIS B 2401 1B-P7	1
16	008001917	JIS B 2401 1A-P21	1
20	007901217	AS568-012 (NBR, Hs70)	4
21	007901617	AS568-016 (NBR, Hs70)	1

D-FG/FRG-02
O

3	007902317	AS568-023 (NBR, Hs70)	1
4	007901217	AS568-012 (NBR, Hs70)	1
9	007901219	AS568-012 (NBR, Hs90)	1
11	007901019	AS568-010 (NBR, Hs90)	1
12	007901119	AS568-011 (NBR, Hs90)	1
13	007901019	AS568-010 (NBR, Hs90)	1
14	007912519	AS568-125 (NBR, Hs90)	1
16	007912019	AS568-120 (NBR, Hs90)	1
22	007901819	AS568-018 (NBR, Hs90)	1
26	007900717	AS568-007 (NBR, Hs70)	1
35	007900617	AS568-006 (NBR, Hs70)	1
38	007912319	AS568-123 (NBR, Hs90)	1
39	007911519	AS568-115 (NBR, Hs90)	1
42	007901219	AS568-012 (NBR, Hs90)	3
43	007921119	AS568-211 (NBR, Hs90)	3



注) ㊸はD-FG用スプール
㊹はD-FRG用スプールの形状を示します。

D-FG/FRG-03
O

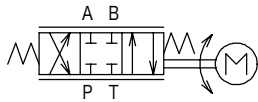
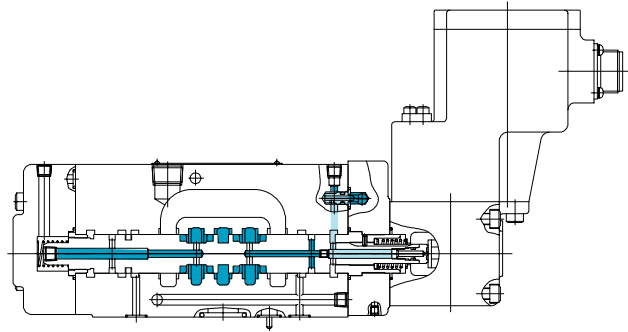
3	007912817	AS568-128 (NBR, Hs70)	1
9	007901219	AS568-012 (NBR, Hs90)	1
11	007901019	AS568-010 (NBR, Hs90)	2
12	007901119	AS568-011 (NBR, Hs90)	1
13	007901019	AS568-010 (NBR, Hs90)	1
14	007913119	AS568-131 (NBR, Hs90)	1
16	007912719	AS568-127 (NBR, Hs90)	1
22	007912119	AS568-121 (NBR, Hs90)	1
26	007900717	AS568-007 (NBR, Hs70)	1
35	007900617	AS568-006 (NBR, Hs70)	1
38	007912919	AS568-129 (NBR, Hs90)	1
39	007912119	AS568-121 (NBR, Hs90)	1
42	007901219	AS568-012 (NBR, Hs90)	3
43	007921517	AS568-215 (NBR, Hs70)	3

D-FG/FRG-06
O

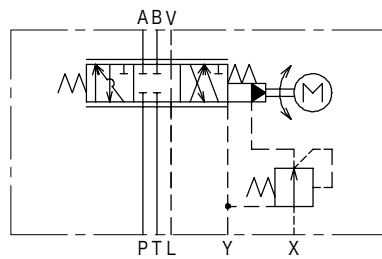
3	007913317	AS568-133 (NBR, Hs70)	1
9	007901219	AS568-012 (NBR, Hs90)	1
11	007901219	AS568-012 (NBR, Hs90)	1
12	007901219	AS568-012 (NBR, Hs90)	1
13	007901119	AS568-011 (NBR, Hs90)	1
14	007913919	AS568-139 (NBR, Hs90)	1
16	007913519	AS568-135 (NBR, Hs90)	1
22	007912919	AS568-129 (NBR, Hs90)	1
26	007900717	AS568-007 (NBR, Hs70)	1
35	007900717	AS568-007 (NBR, Hs70)	1
38	008050619	JIS B 2401 1B-G50	1
39	007912919	AS568-129 (NBR, Hs90)	1
42	007911119	AS568-111 (NBR, Hs90)	3
43	007922419	AS568-224 (NBR, Hs90)	3

D-DF(R)G

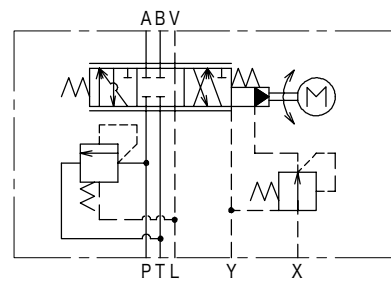
Digital directional & flow control valves



D-DFG-01



D-DFG-03~10



D-DFRG-03/04

D-DFG-01-2C-30-100-20

1 2 3 4 5 6 7

- 1
- 2
- 3 ()
- 2:
- 4
- C:
- 5
- 「 」
- 6 100:100 (5)
- 7

D-DFG-31-06-2C-EX-130-157-(*)-21

1 2 3 4 5 6 7 8 9 10 11

- 1
- D-DFG:
- D-DFRG: (03 04)
- 2
- 2: 1
- 3: 2
- 3
- 0: 5: (04, 06, Size)
- 1: 5: (04, 06 Size)
- 4
- 「 」
- 5 ()
- 2:
- 6
- c:
- 7 EX: ()
- 8
- 「 」
- 9
- 63:±63 ±127 (4)
- 157:±157 (5)
- 10
- :
- 1~:
- 11
- 20:D-DF(R)G-03, D-DFG-10
- 21:D-DF(R)G-04, D-DFG-06

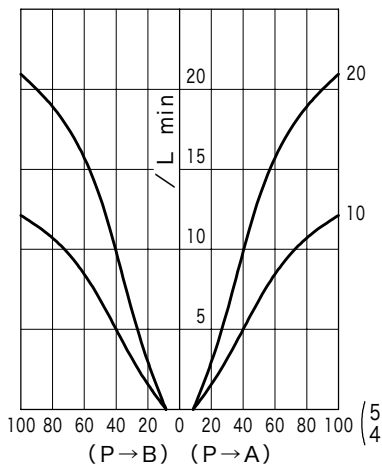
		01			03			04		06		10	
MPa(kgf/cm ²)		21											
L/min		10	20	30	20	40	70	100	130	190	250	350	500
L/min	D-DFG	0.35			0.8	1.0	1.2	1.6	1.9	2.6	3.5	7	9
	D-DFRG	—			1.8	2.0	2.2	2.6	2.9	—		—	
MPa(kgf/cm ²)		—			2~21 (3MPa(30 kgf/cm ²)					
L/min (3 MPa(30kgf/cm ²)		—			1.0			1.5		2.0			
		0.5 %			0.1 %								
(ISO VG 32	30~60°C)	φ2 %											
()	2	—			± 63 (P→A P→B) (4)								
	1-2	—			±127 (P→A P→B) (4)								
	4	±100 (P→A P→B)			±157 (P→A P→B) (5)								
		2000 pps			2	900 pps、			(DC-B2B) 1.1 ms/ (70 ms/63)				
		φ±3 %											
Y ()	MPakgf/cm ²	1 *1			0.35								
()		10 μm			25 μm以下								
kg	D-DFG	2.5			10.7			10.8		18.2		45	
	D-DFRG	—			12.7			12.8		—		—	

* 1 : T

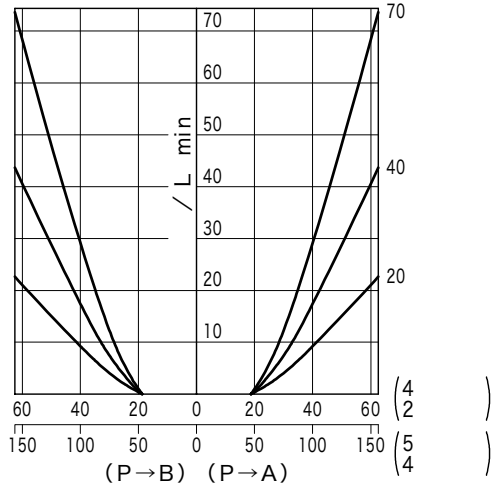
(20mm²/s(cSt)

(P→A/B 0.7MPa(7kgf/cm²)

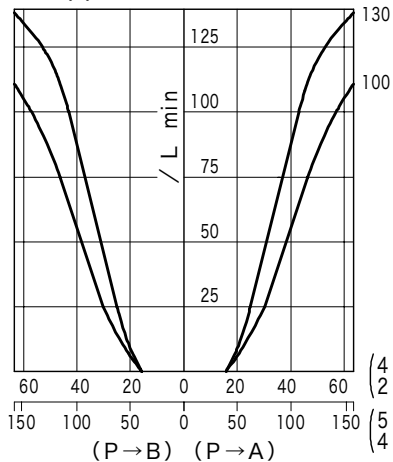
D-DFG-01



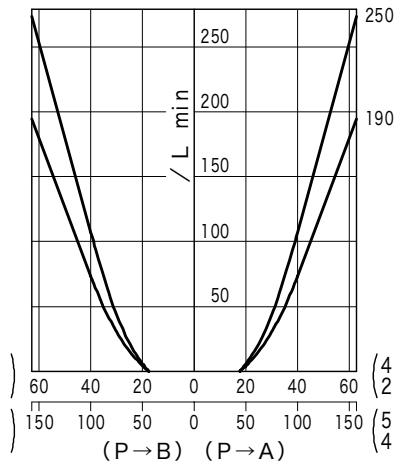
D-DF(R)G-31-03



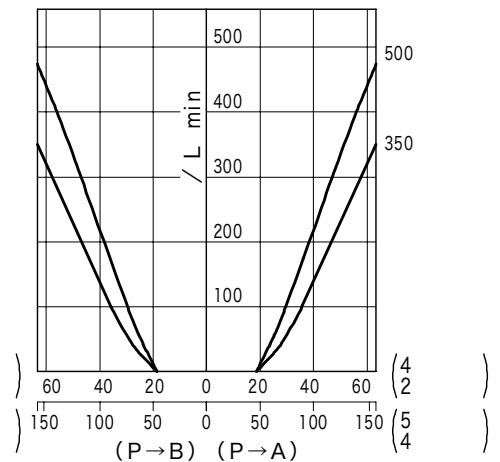
D-DF(R)G-31-04



D-DFG-31-06



D-DFG-31-10



置

03
가

가

06,10

3Mpa(30kgf./cm²)

Mpa(3.5kgf/cm²)

가7mpa(70kgf/cm²)

650, 500 PPS가

0.35

(JIS B 1176 12.9)

D-DFG-01	M 5×50	—	4
D-DF (R) G-03	M 6×40	1/4-20UNC×38.1	4
D-DF (R) G-04	M 6×45	1/4-20UNC×44.5	2
	M10×50	3/8-16UNC×50.8	4
D-DFG-06	M12×55	1/2-13UNC×57.1	6
D-DFG-10	M20×65	—	6

		Rc
D-DFG-01	* DGMS-3-1E-10-T-JA-J	3/8
	* DGVM-3-10-T-JA-J	
D-DF (R) G-03	DEFGM-03X-10	1/2
D-DF (R) G-04	DEFGM-04X-10	3/4
D-DFG-06	DEFGM-06X-11	1
D-DFG-10	DEFGM-10X-11	1-1/2

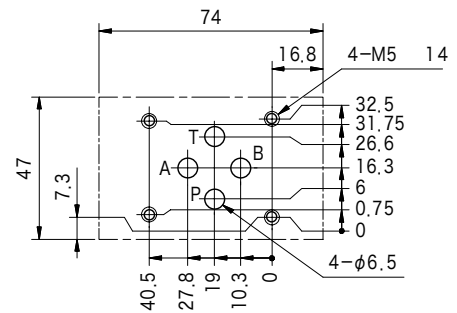
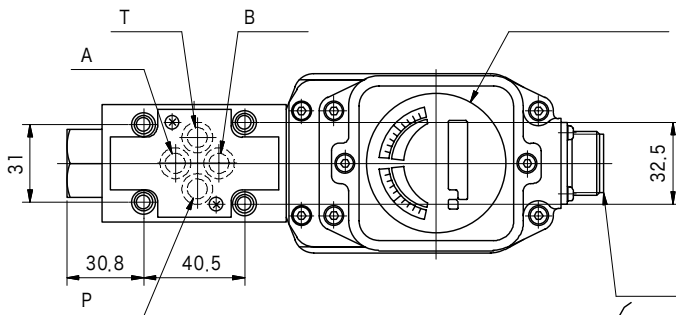
- D-DFG-01 : 7~8 N·m
- D-DF (R) G-03 : 12~15 N·m
- D-DF (R) G-04 : M6(1/4-20UNC) 9~14 N·m
M10(3/8-16UNC) 50~60 N·m
- D-DFG-06 : 75~81 N·m
- D-DFG-10 : 230~290 N·m

가 (*) ()

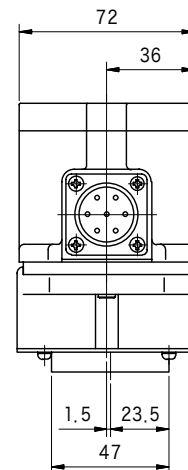
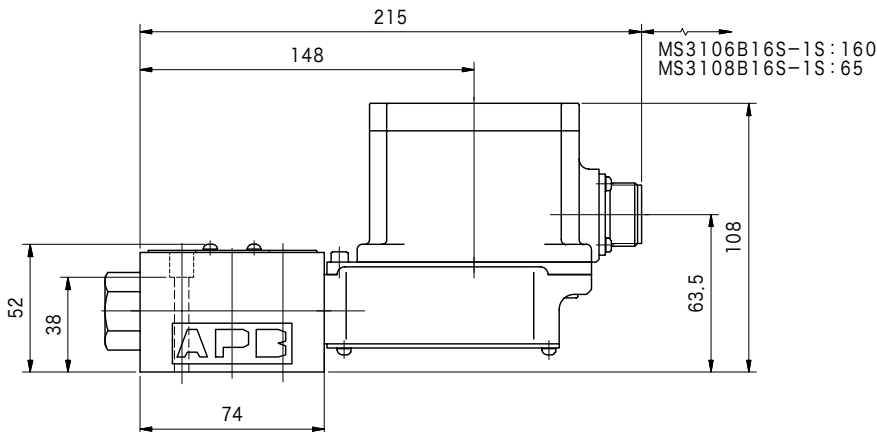
Q8,Q10,Q11 page

D-DFG-01

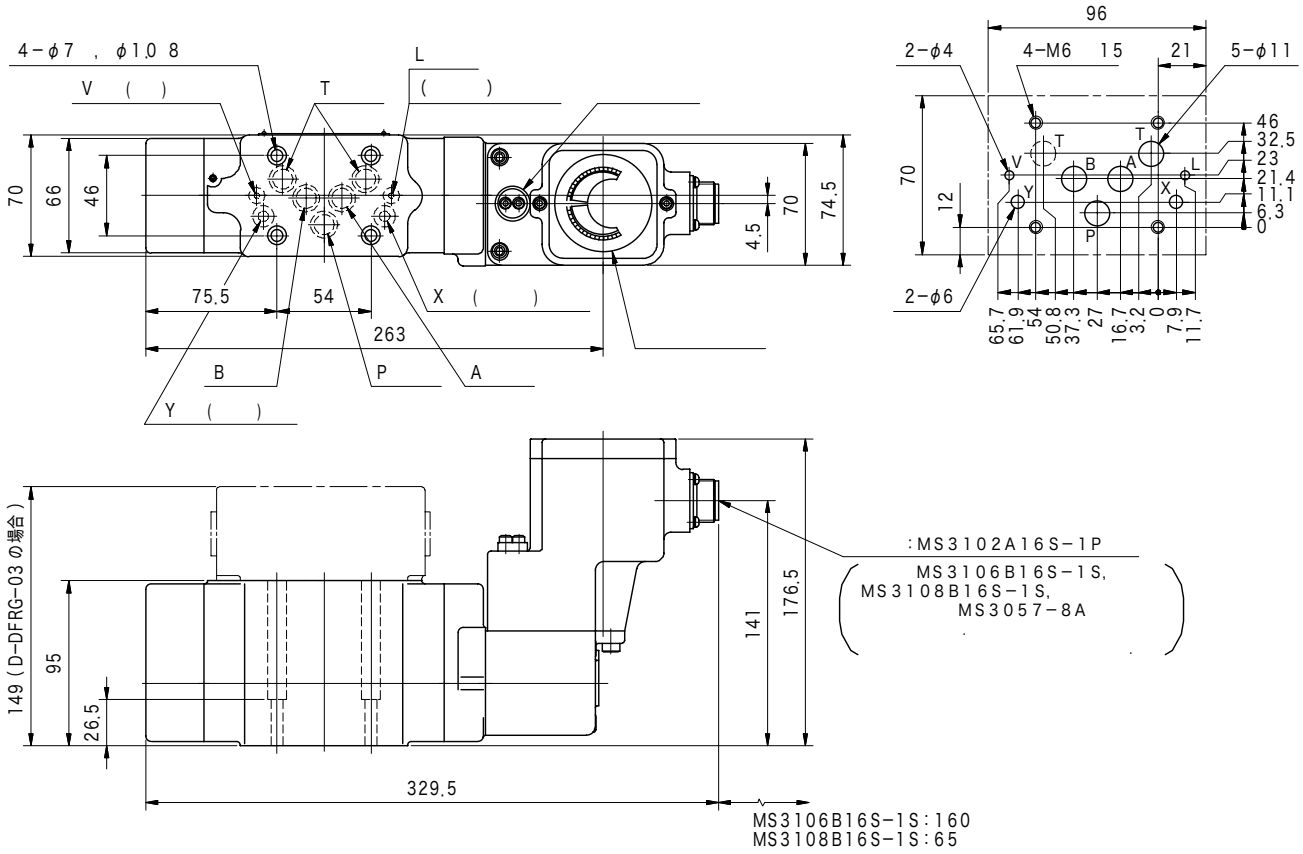
(ISO 4401-03)



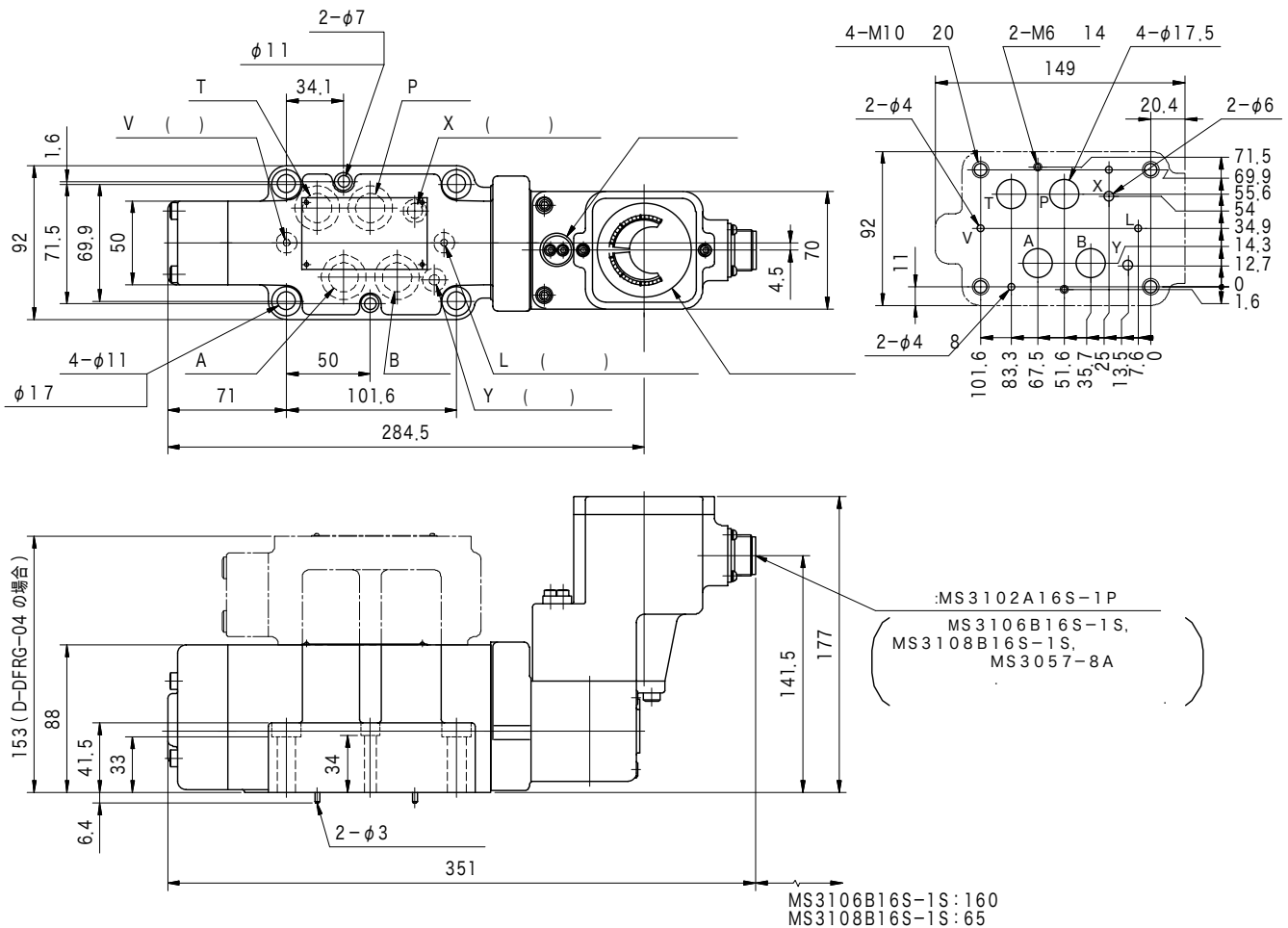
:MS3102A16S-1P
MS3106B16S-1S,
MS3108B16S-1S,
MS3057-8A



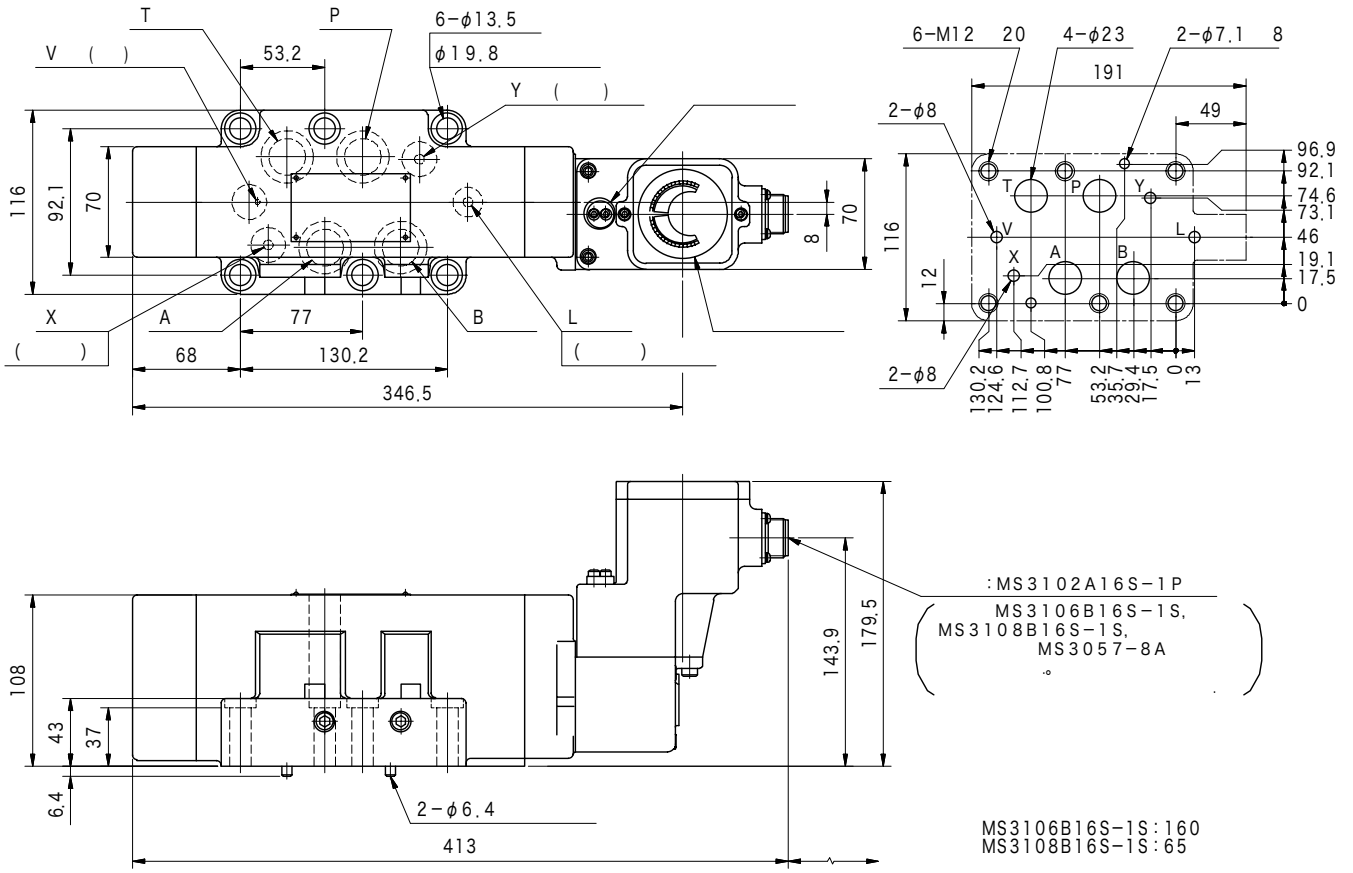
D-DF(R)G-03



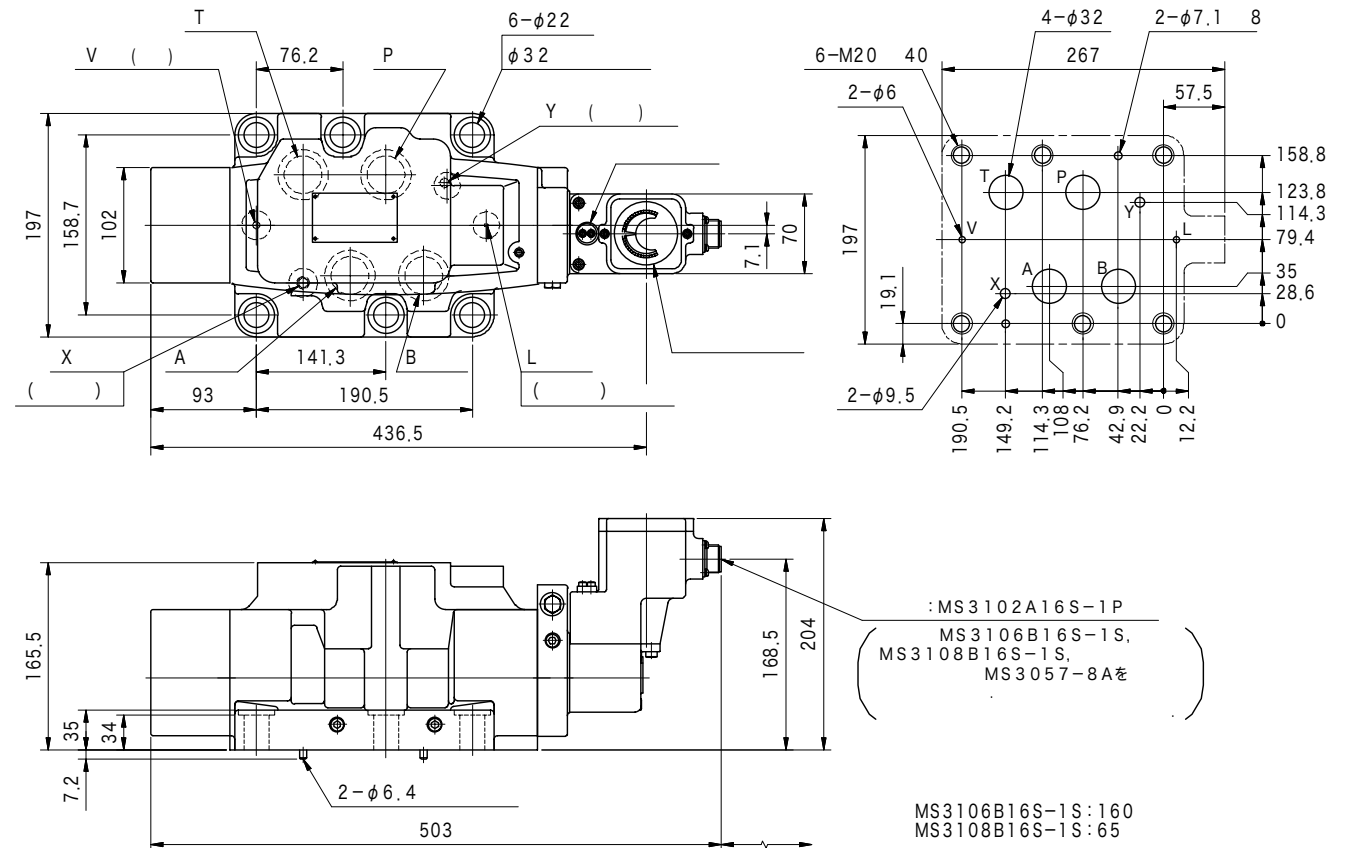
D-DF(R)G-04



D-DFG-06



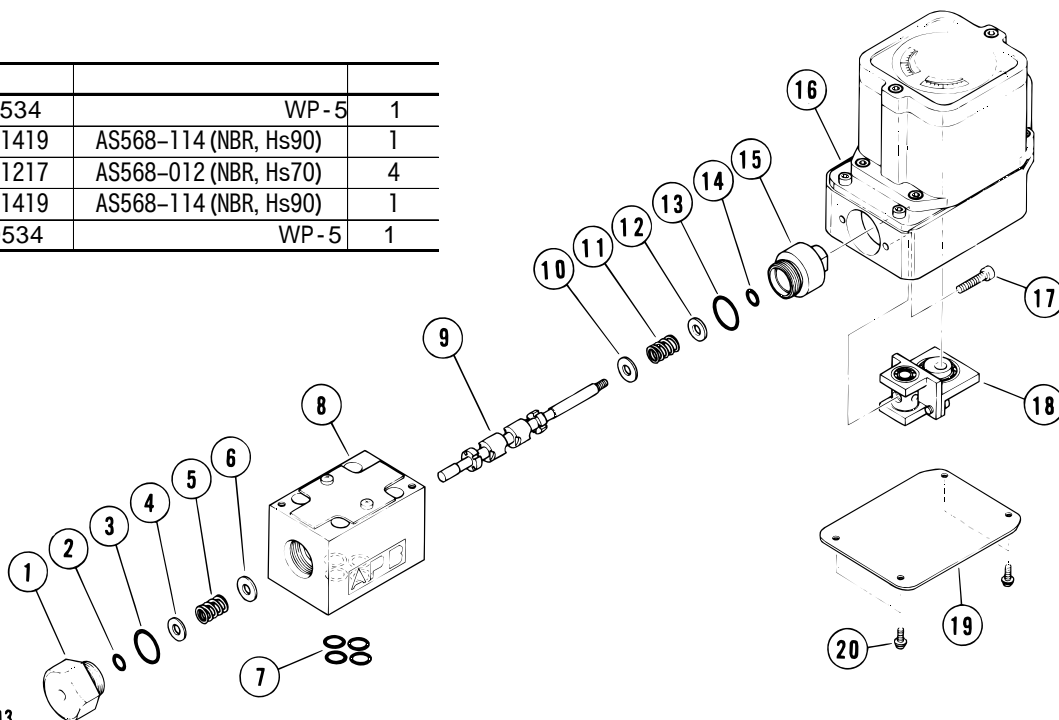
D-DFG-10



D-DFG-01

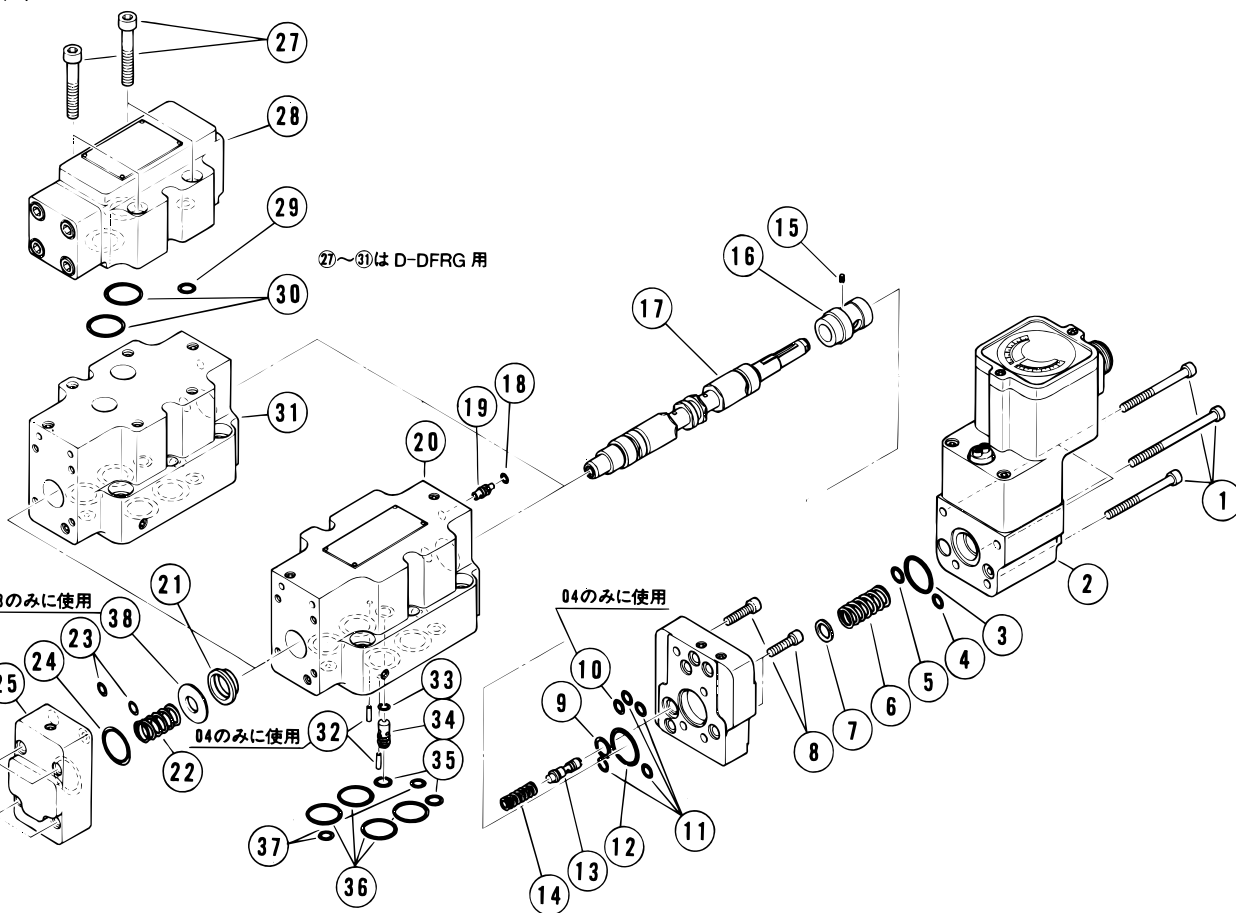
O

2	VA30534	WP-5	1
3	007911419	AS568-114 (NBR, Hs90)	1
7	007901217	AS568-012 (NBR, Hs70)	4
13	007911419	AS568-114 (NBR, Hs90)	1
14	VA30534	WP-5	1



D-DF(R)G-3*-03

D-DF(R)G-3*-04



D-DF(R)G-3*-03

O

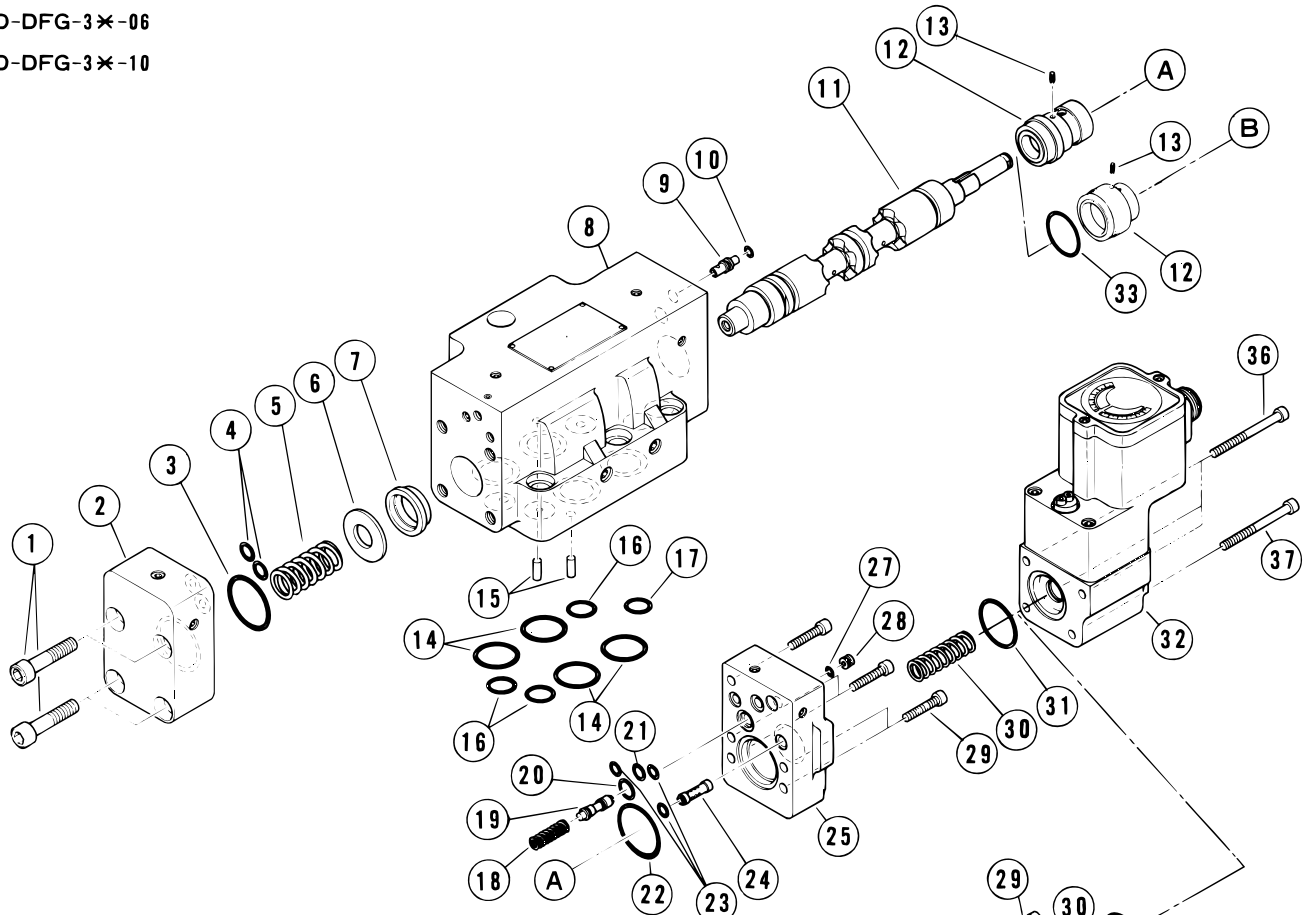
3	007902317	AS568-023 (NBR, Hs70)	1
4	007901217	AS568-012 (NBR, Hs70)	1
5	007901317	AS568-013 (NBR, Hs70)	1
9	007901417	AS568-014 (NBR, Hs70)	1
11	007901217	AS568-012 (NBR, Hs70)	4
12	007902317	AS568-023 (NBR, Hs70)	1
18	007900717	AS568-007 (NBR, Hs70)	1
23	007901217	AS568-012 (NBR, Hs70)	3

24	007902317	AS568-023 (NBR, Hs70)	1
29	007901317	AS568-013 (NBR, Hs70)	1
30	007901417	AS568-014 (NBR, Hs70)	2
33	007900917	AS568-009 (NBR, Hs70)	1
35	007901217	AS568-012 (NBR, Hs70)	2
36	007901417	AS568-014 (NBR, Hs70)	5
37	007901017	AS568-010 (NBR, Hs70)	2

内部構造

D-DFG-3*~~06~~

D-DFG-3*~~10~~



D-DF(R)G-3*~~04~~
O

D-DFG-3*~~06~~

Part No.	Code	Description	Qty
3	007902319	AS568-023 (NBR, Hs90)	1
4	007901119	AS568-011 (NBR, Hs90)	1
5	007901319	AS568-013 (NBR, Hs90)	1
9	007901419	AS568-014 (NBR, Hs90)	1
10	007901219	AS568-012 (NBR, Hs90)	1
11	007901219	AS568-012 (NBR, Hs90)	4
12	007902319	AS568-023 (NBR, Hs90)	1
18	007900717	AS568-007 (NBR, Hs70)	1
23	007901119	AS568-011 (NBR, Hs90)	2
24	007902319	AS568-023 (NBR, Hs90)	1
29	007901319	AS568-013 (NBR, Hs90)	1
30	007921219	AS568-212 (NBR, Hs90)	2
33	007900917	AS568-009 (NBR, Hs70)	1
35	007901319	AS568-013 (NBR, Hs90)	2
36	007921119	AS568-211 (NBR, Hs90)	4
37	007901219	AS568-012 (NBR, Hs90)	2

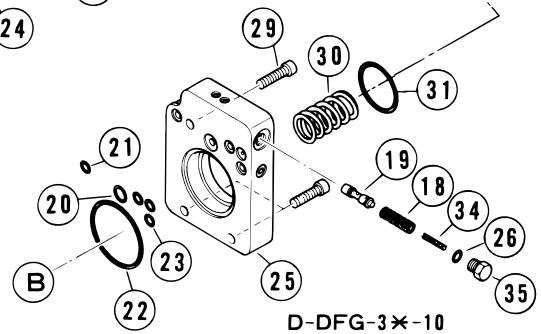
注)・D-DFG-37-04の場合、②3 007901119の個数は3になります。

D-DFG-3*~~06~~
O

Part No.	Code	Description	Qty
3	007912819	AS568-128 (NBR, Hs90)	1
4	007901319	AS568-013 (NBR, Hs90)	2
10	007900917	AS568-009 (NBR, Hs70)	1
14	007921519	AS568-215 (NBR, Hs90)	4
16	007911519	AS568-115 (NBR, Hs90)	3
17	007911319	AS568-113 (NBR, Hs90)	1
20	007901519	AS568-015 (NBR, Hs90)	1
21	007901319	AS568-013 (NBR, Hs90)	1
22	007912819	AS568-128 (NBR, Hs90)	1
23	007901219	AS568-012 (NBR, Hs90)	3
27	007900819	AS568-008 (NBR, Hs90)	1
31	007912519	AS568-125 (NBR, Hs90)	1

)・D-DFG-37-06

、④007901219、⑩007911619が



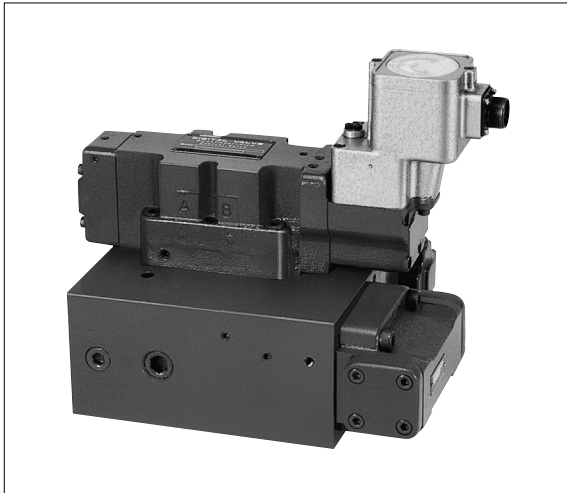
D-DFG-3*~~10~~

D-DFG-3*~~10~~
O

Part No.	Code	Description	Qty
3	007914317	AS568-143 (NBR, Hs70)	1
4	007901217	AS568-012 (NBR, Hs70)	2
10	007901017	AS568-010 (NBR, Hs70)	1
14	007922217	AS568-222 (NBR, Hs70)	4
16	007921017	AS568-210 (NBR, Hs70)	3
17	007921017	AS568-210 (NBR, Hs70)	1
20	007901417	AS568-014 (NBR, Hs70)	1
21	007901217	AS568-012 (NBR, Hs70)	1
22	007914117	AS568-141 (NBR, Hs70)	1
23	007901217	AS568-012 (NBR, Hs70)	3
26	007901217	AS568-012 (NBR, Hs70)	1
31	007913117	AS568-131 (NBR, Hs70)	1
33	007913317	AS568-133 (NBR, Hs70)	1

U-D35-04/06

Exclusive lift circuit block



가

U-D35-04-2C-130-001

- 1 2 3 4 5 6 7 8

1

2

3

35 :

4

5

6

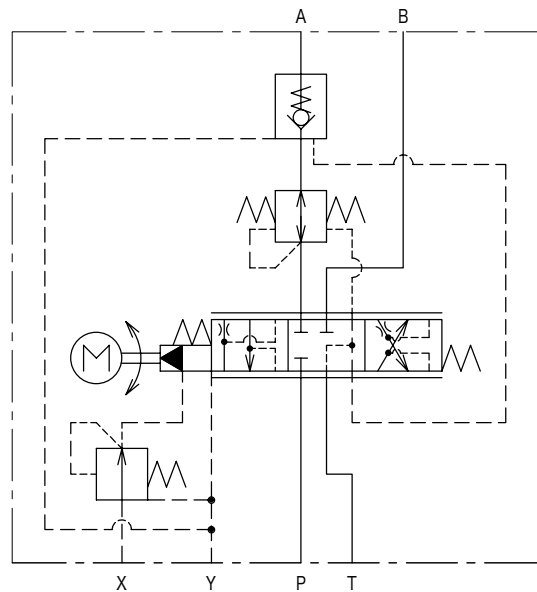
C :

7

130:130 L/min

250:250 L/min

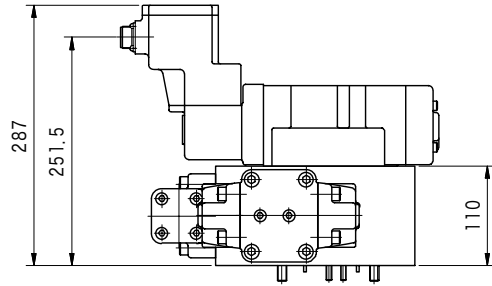
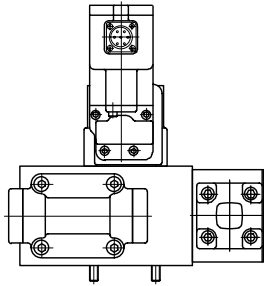
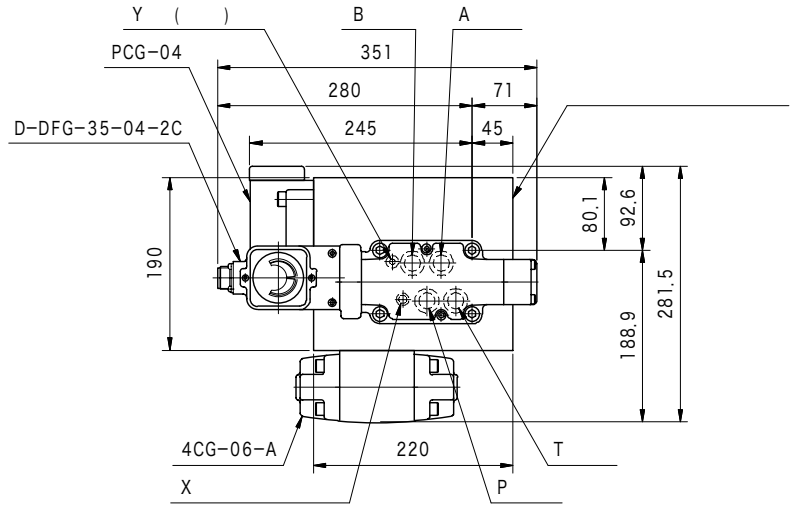
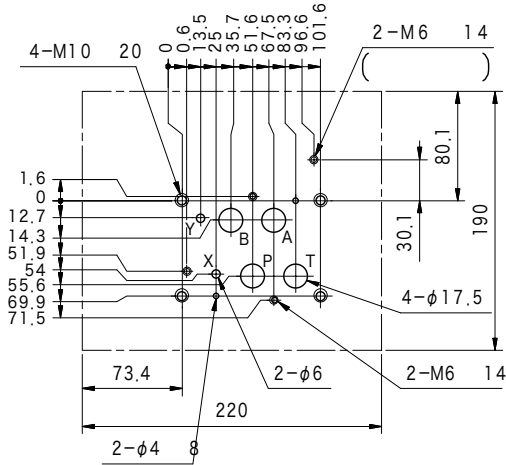
8



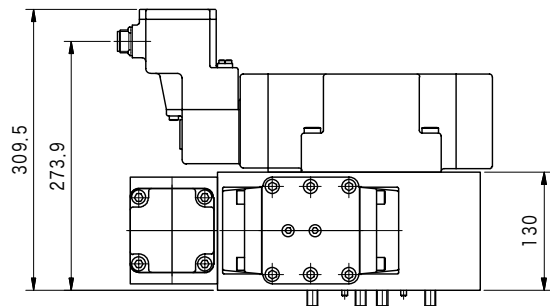
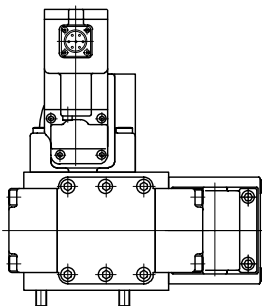
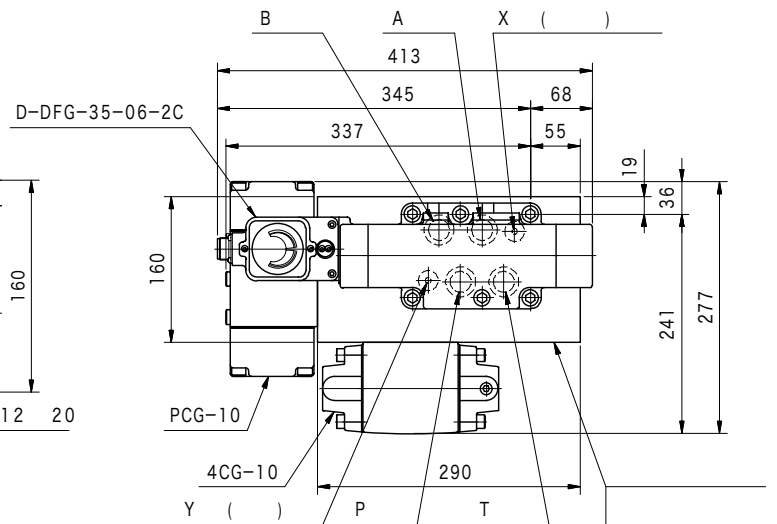
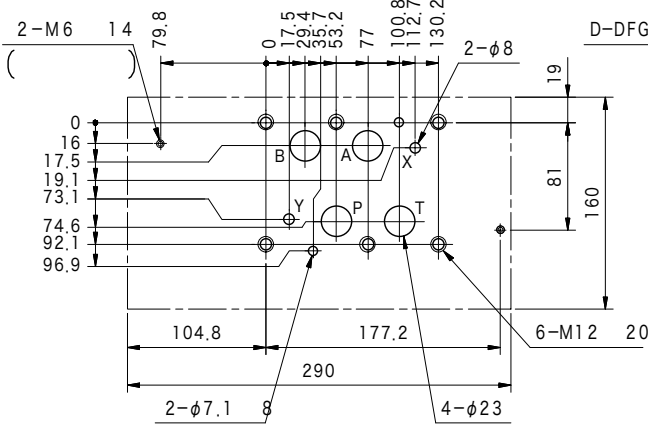
	Mpa	L/min	kg
04	21	130	58
06	21	250	90

K
30

U-D35-04

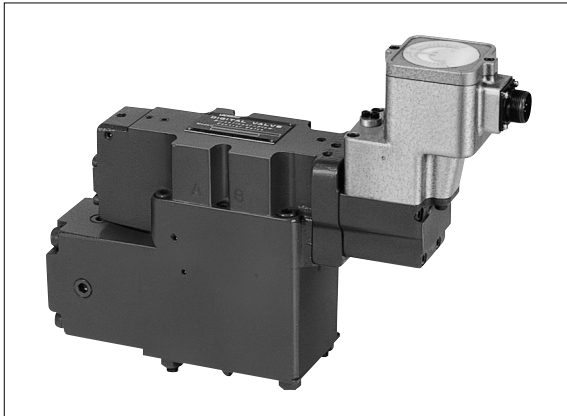


U-D35-06



U-D37-04/06

Meter-out circuit block



가

U-D37-04-2C-130-001

1 2 3 4 5 6 7 8

1
2
3

37:

4
5
6

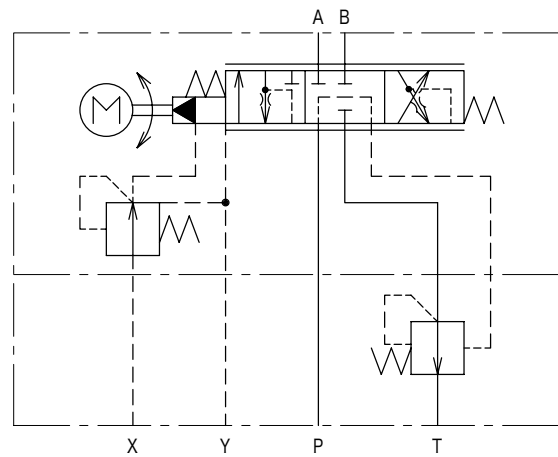
c:

7

130:130 L/min
250:250 L/min

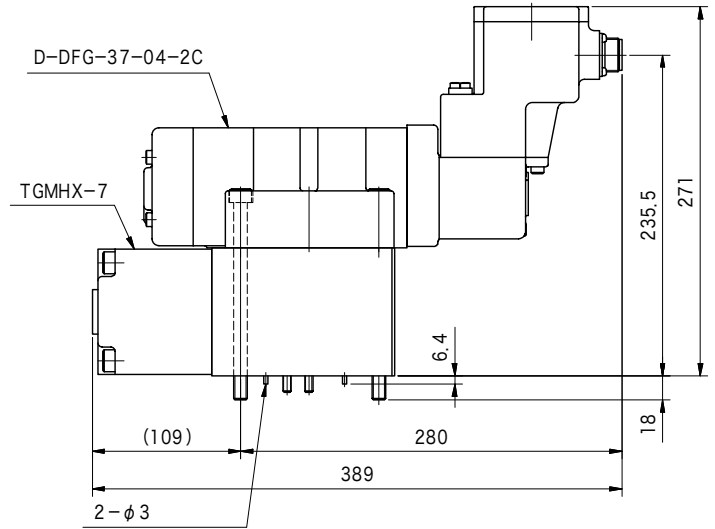
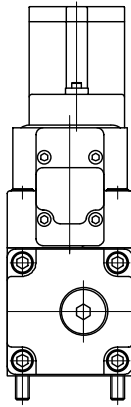
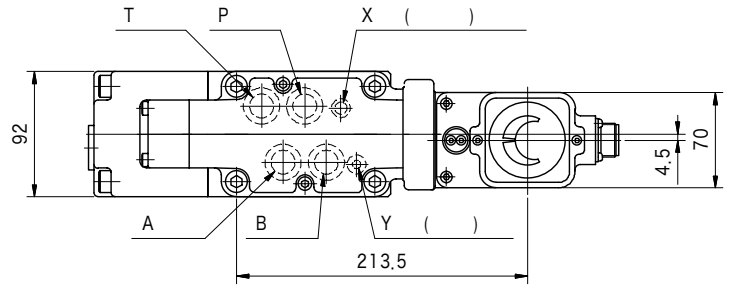
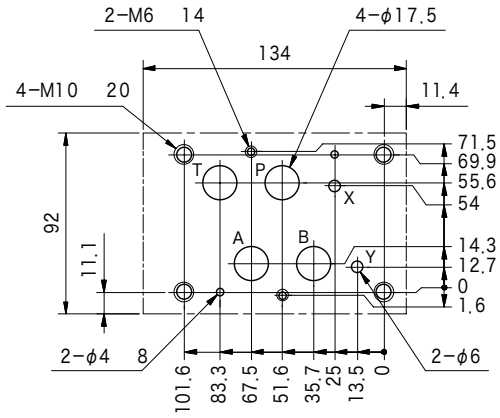
8

K
32

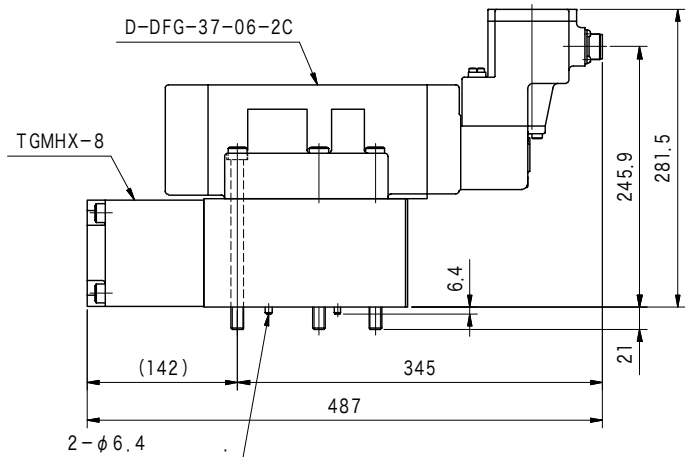
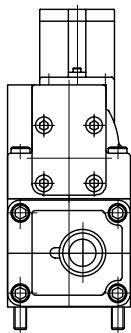
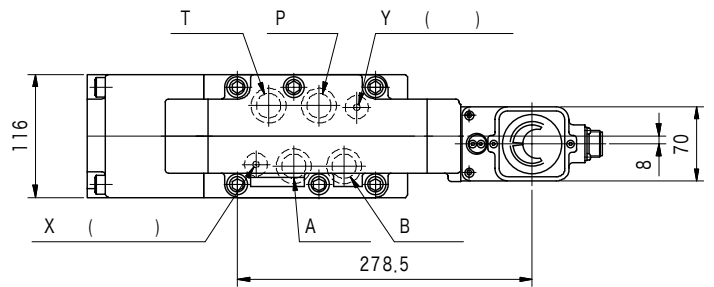
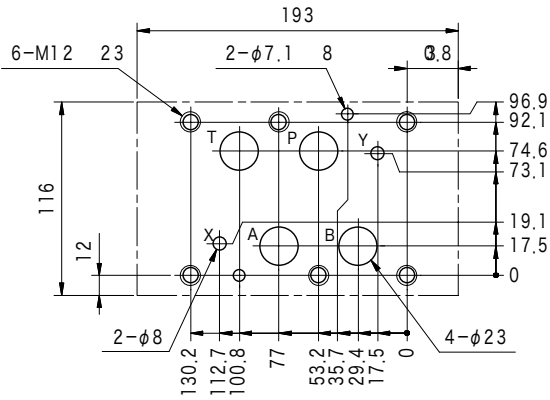


	Mpa	L/min	kg
04	21	130	23
06	21	250	40

U-D37-04



U-D37-06



DC-AX4

Digital valve controllers



DC-AX4 (5)
 (CH) (FL) 8(CH)X10(FL)=80 80
 6 4
 가 ,
 ,Programmable

DC-AX4-B-10

1 2 3 4 5

1
2
3

4: 5

4

4

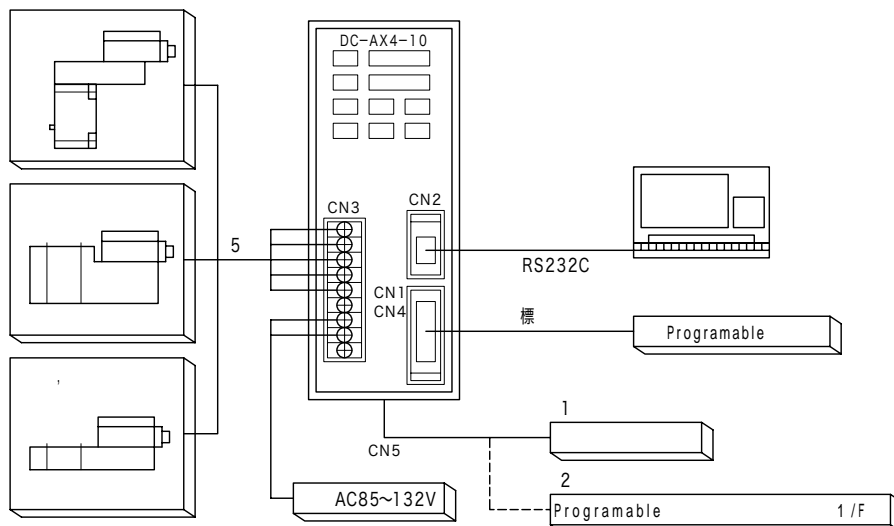
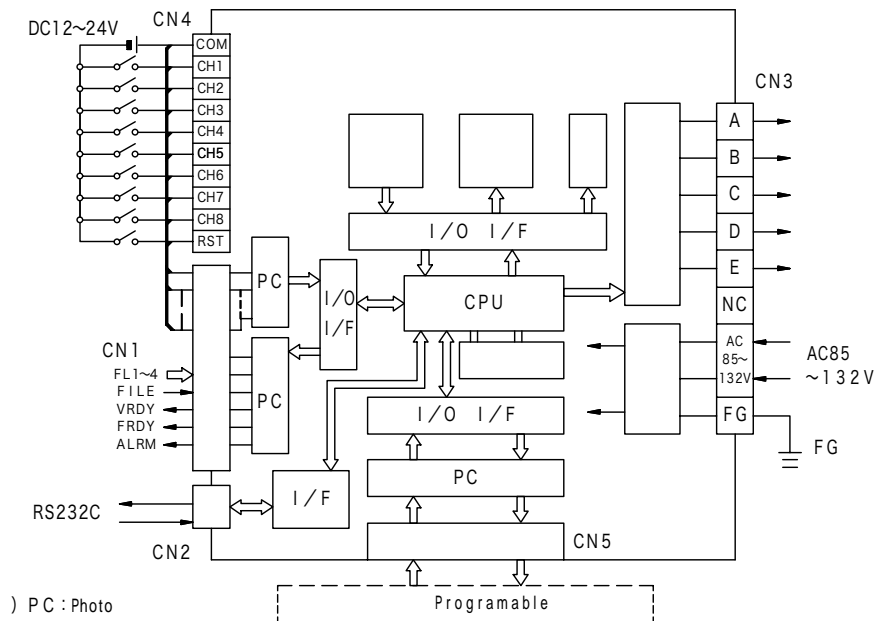
B:

5

K
34

DC-AX4-B-10	
AC85 V~132 V 50/60 Hz	
30 VA	
DC12 V~24 V	
10 mA/	
: 8 CH1~CH8, RST	
: 5 FL1~FL4, FILE	
: 7 , , /	
: 12 SDO~SD11	
: 8 CHS1~CHS8	
80 CH : 8 CH×10 FILE	
8 CH : BCD ()	
0~250	0~250
(01) -100~+100	(03) -157~+157
0.01~9.99 0.01 가	
5	4 0.75 A/ ()
RS232C (1) D 9	
1.5 kg	

ブロック図

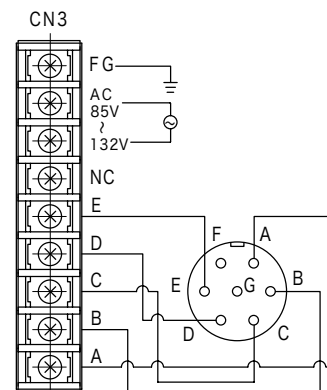
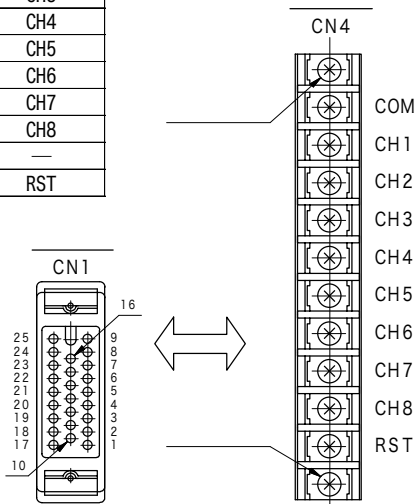


1 (CN1)

				(CN4)
1	COM	common		COM
2	CH1			CH1
3	CH2	チャンネル2	入力	CH2
4	CH3	チャンネル3	入力	CH3
5	CH4	チャンネル4	入力	CH4
6	CH5	チャンネル5	入力	CH5
7	CH6	チャンネル6	入力	CH6
8	CH7	チャンネル7	入力	CH7
9	CH8	チャンネル8	入力	CH8
10	AUX10	予備 入力0	入力	—
11	RST	リセット	入力	RST
12	FL1	ファイル1	入力	
13	FL2	ファイル2	入力	
14	FL3	ファイル3	入力	
15	FL4	ファイル4	入力	
16	FILE	ファイル切替	入力	
17	COM1+	出力コモン+	出力	
18	VRDY	弁レディ	出力	
19	FRDY	ファイルレディ	出力	
20	ALRM	アラーム	出力	
21	CNT/SET	制御/設定	出力	
22	AUX01	予備 出力1	出力	
23	AUX02	予備 出力2	出力	
24	AUX03	予備 出力3	出力	
25	COM1-	出力コモン-	出力	

(CN)

1	FG	フレームグラウンド	—
2	AC85 V	供給電源AC入力	入力
3	~132 V		入力
4	NC	不使用	—
5	E	弁 出力 E	出力
6	D	弁 出力 D	出力
7	C	弁 出力 C	出力
8	B	弁 出力 B	出力
9	A	弁 出力 A	出力



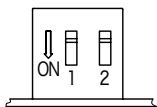
1CN1 CN4

CN1

Deep

NO	ON/OFF	
0	1 : OFF 2 : OFF	()
1	1 : ON 2 : OFF	
2	1 : OFF 2 : ON	
3	1 : ON 2 : ON	オプション

()

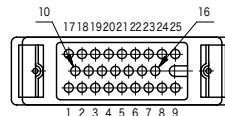


CN5

5 (CN5)

ピン番号	拡張機能1		拡張機能2		入出力
	信号	摘要	信号	摘要	
1	COM2+	コモン+	COM2+	コモン+	入力
2	SD0	ステップデータ0	SD0	ステップデータ0	入力
3	SD1	ステップデータ1	SD1	ステップデータ1	入力
4	SD2	ステップデータ2	SD2	ステップデータ2	入力
5	SD3	ステップデータ3	SD3	ステップデータ3	入力
6	SD4	ステップデータ4	SD4	ステップデータ4	入力
7	SD5	ステップデータ5	SD5	ステップデータ5	入力
8	SD6	ステップデータ6	SD6	ステップデータ6	入力
9	SD7	ステップデータ7	SD7	ステップデータ7	入力
10	SD8	ステップデータ8	TS0	TSデータ0	入力
11	SD9	ステップデータ9	TS1	TSデータ1	入力
12	SD10	ステップデータ10	TS2	TSデータ2	入力
13	SD11	ステップデータ11	TS3	TSデータ3	入力
14	AUX11	予備 入力1	TS4	TSデータ4	入力
15	AUX12	予備 入力2	SGN	符号データ	入力
16	AUX13	予備 入力3	VRST	弁リセット	入力
17	CHS1	チャンネルセレクト1	VRDY	弁レディ	出力
18	CHS2	チャンネルセレクト2	ALRM	アラーム	出力
19	CHS3	チャンネルセレクト3	CNT/SET	制御/設定モード	出力
20	CHS4	チャンネルセレクト4	AUX04	予備出力4	出力
21	CHS5	チャンネルセレクト5	AUX05	予備出力5	出力
22	CHS6	チャンネルセレクト6	AUX06	予備出力6	出力
23	CHS7	チャンネルセレクト7	AUX07	予備出力7	出力
24	CHS8	チャンネルセレクト8	AUX08	予備出力8	出力
25	COM2-	コモン-	COM2-	コモン-	出力

上面 (カバー内部) CN5

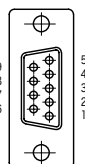


RS232C

2 (CN2)

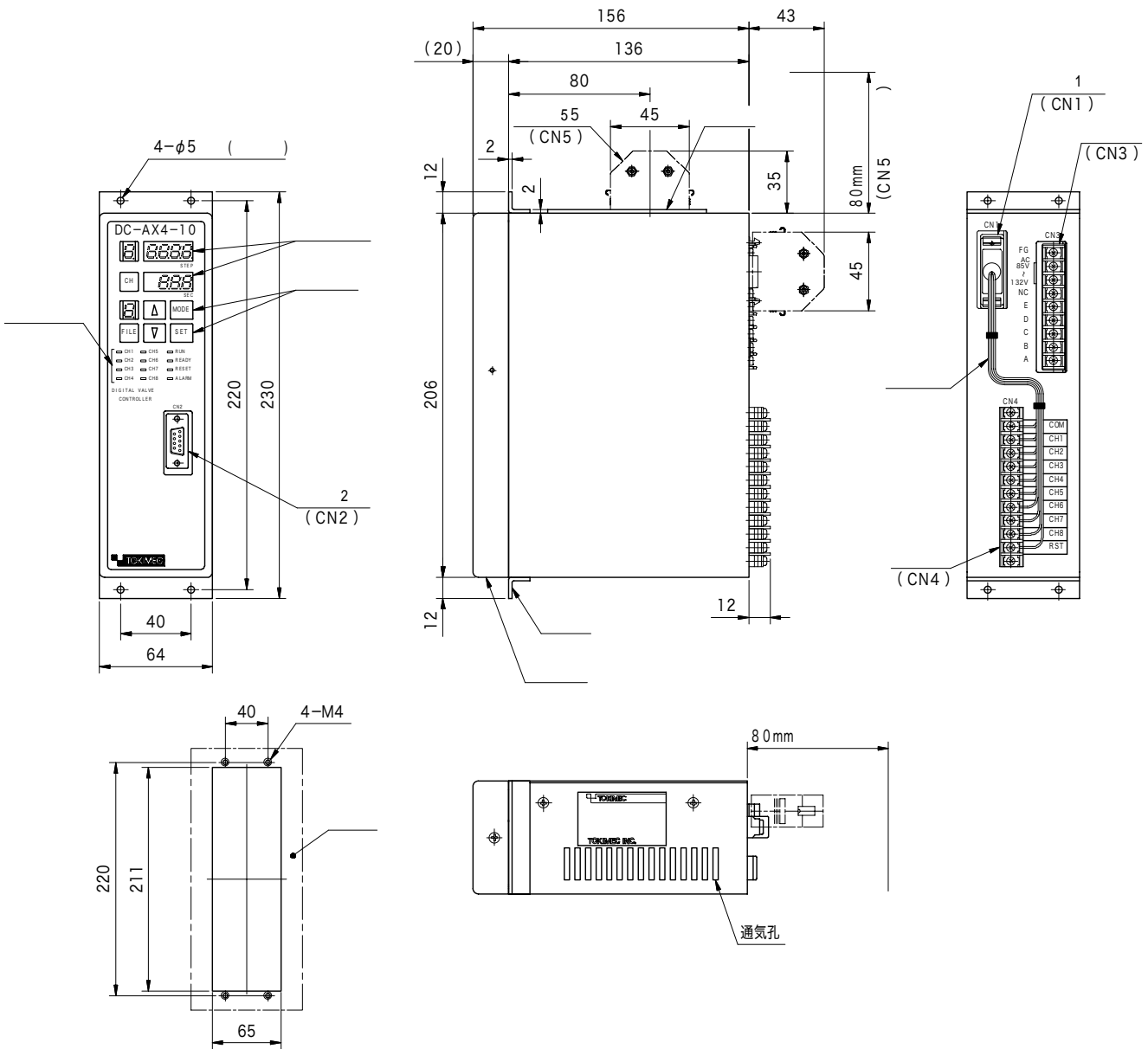
ピン	信号	機能	入出力
1	FG	フレームグラウンド	—
2	TXD	送信データ	出力
3	RXD	受信データ	入力
4	DDC	コントローラ選別ピン	入力
5	CTS	クリア トゥ センド	入力
6	DDCR	コントローラ選別ピン	出力
7	GND	信号グラウンド	—
8	NC	不使用 (空き)	—
9	24 V+	DC24 V+出力	出力

CN2



&

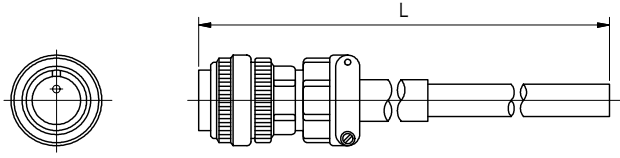
コネクタ	型番	ピン数	形状	規格
() CN3	F2067AX-15L-7M-9P-CT	9P	(M3)	AWG 20~22
CN1 CN5	MR-25RFAG	25P	{ 1 MR-25MG MR-25L	AWG 24~28
CN4	F2061C-10P	10P	(M3)	AWG 20~24
CN2	GM-9SRFD	9P	D 9	AWG 24~28



●
DC-H-DV-300-10

- 1 2 3 4

- 1
2
3 (L)
200:2 m 300:3 m 600:6 m
1000:10 m 1500:15 m 2000:20 m
4



	A	B	C	D	E	F	G
							-

DC-A1/4

Digital valve controllers



DC-A1/4

Programmable

DC-A1-20-(S2)

1 2 3 4

1	2	3	4	3	4
1:4	2			:	
4:5	4			s2 :	()

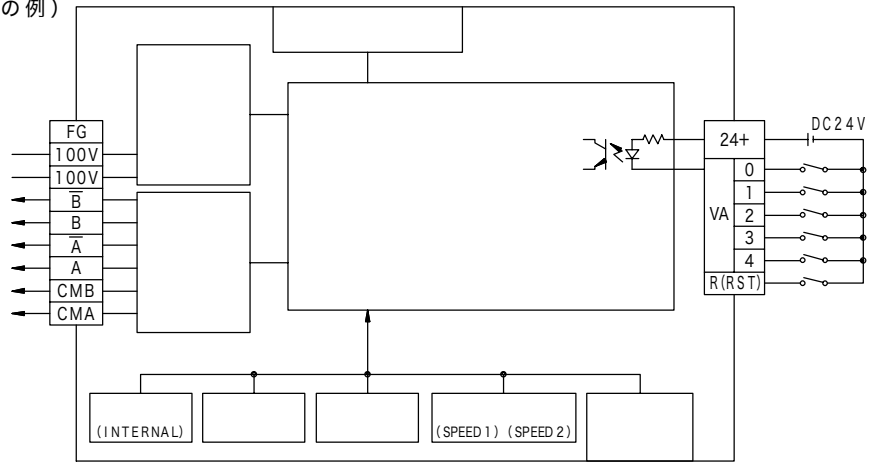
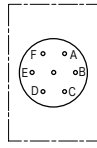
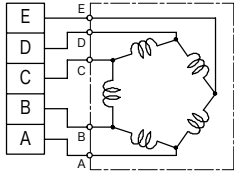
K
38

		DC-A1-20	DC-A4-20
		AC100 V±15 %, 50/60 Hz	
		80 VA	70 VA
		DC24 V±10 % 100 mA	
		5 (DC-A1	10 가)
()		0~99	0~250
		-63~+63	-157~+157または-100~+100
		2 (3)	
		1.2~100 ms/ 0.1 ms	0.5~100 ms/ 0.1 ms
		4 2	5 4
		1.1 A/	0.75 A/
		5 (4)	5 (4)
		(0)	
		BCD2	BCD 3
		8 BCD2 (24 V)	
		BERG 66900-250 (50 P)	BERG 66900-260 (60 P)
		Dc-H-P5* -300-10	DC-H-P5* -60-300-10
		()	
		3.8 kg	

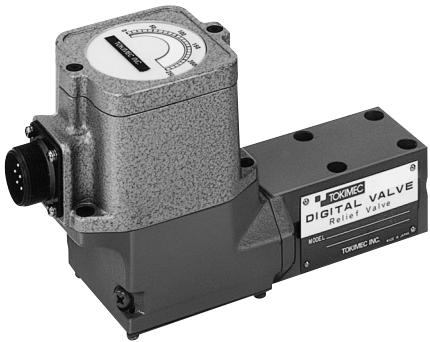
(DC-A1-20 の例)

(DC-A4-20)

(5)

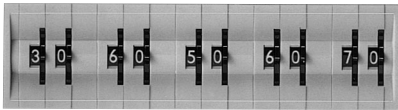


AC100 V 80 VA(max)



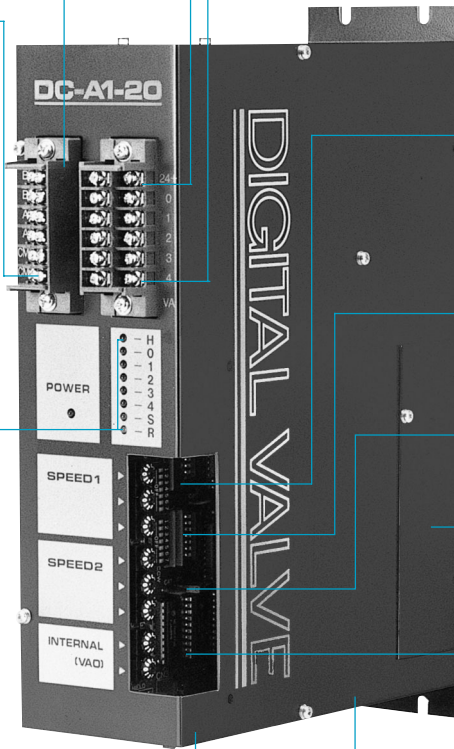
LED

(S H(home position) R)



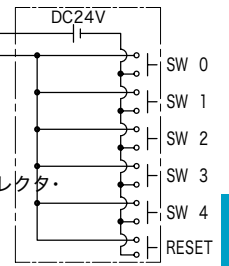
BCD

5



設定できる内部セレクト
スイッチ。

Programmable

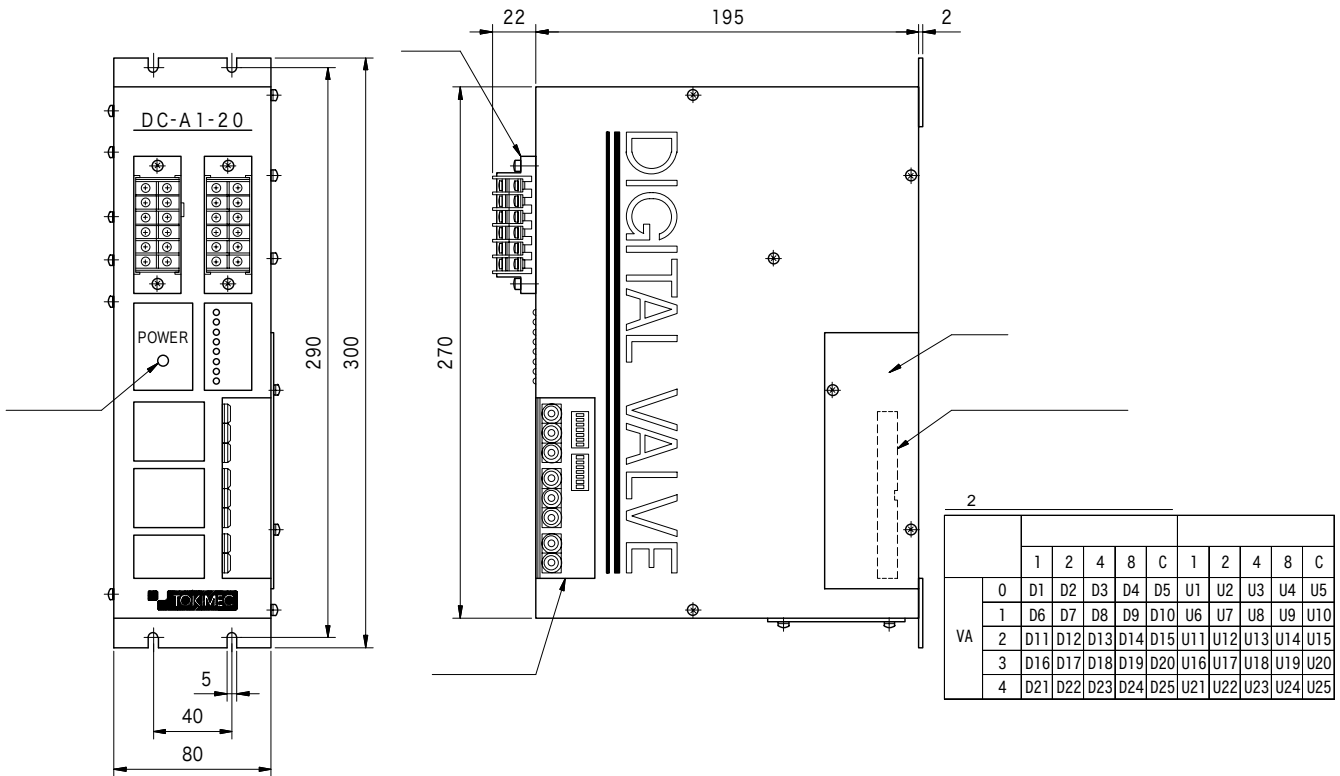


が

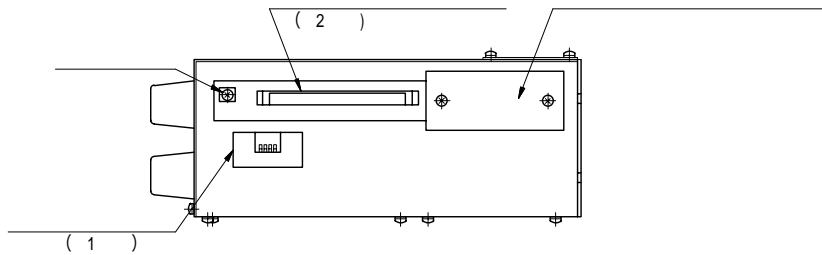
1

4

BCD



NO		OFF	ON
1	方向選択	リリーフ弁および 流量調整弁	方向・流量 制御弁
2	%	実設定	%設定
3	入力モード	BCD入力 (通常使用時)	バイナリ入力 (外部ステップ 入力使用時)
4	オプション	どちらでもよい	

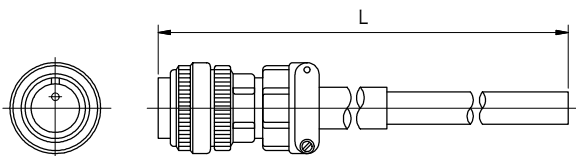


K
40

DC-H-DV-300-10

1 2 3 4

- 1
- 2
- 3 (L)
200:2m 300:3m 600:6m
1000:10m 1500:15m 2000:20m
- 4



	A	B	C	D	E	F	G
							-

DC-H-P5 S-(60)-300-10

1 2 3 4 5 6

- 1
- 2 (5)
- 3 (BERG 66900-250)

S :
D :

- 4 : DC-A1
60:DC-A4
- 5 300:3m
- 6

Flat ()

DC-AE

Extension unit



- DC-A1
- 5
- DC-A1-10
- DC-A1-10 5 BCD
- 2
- 4

DC-AE-10-(S2)

1 2 3 4

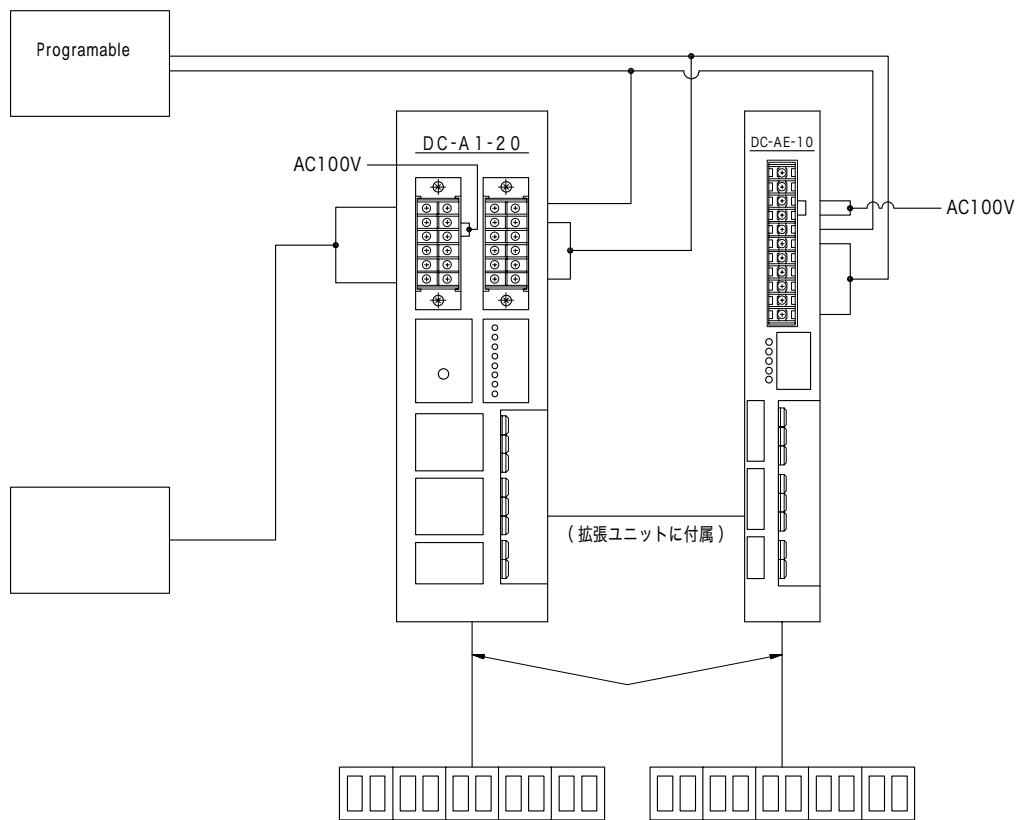
1
2

E:DC-A1-20

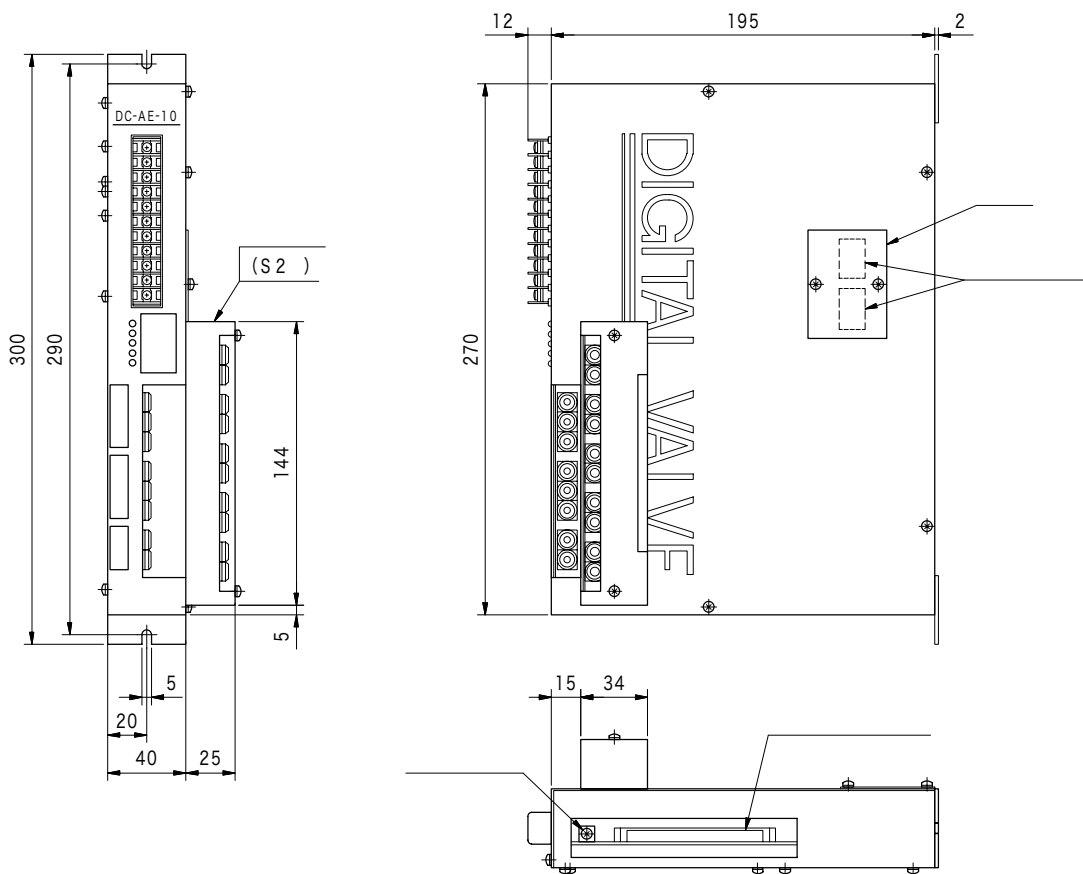
3
4

S2 : ()

		DC-AE-10
		AC100 V±15 %, 50/60 Hz
		20 VA
		DC24 V±10 %
		100 mA
		5
		0~99
		-63~+63
		2(3)
()		1.2~100 ms/ 0.1 ms
		(⁴ / ₂ 1.1 A/)
		5()
		(0)
		BCD 2
		BERG 66900-250 (50P)
		DC-H-P5*-300-10
		2.1 kg



DC-AE-10



DC-AT1/2

Digital valve controllers



DC-AT1/2, DC-A1

) 32

DC-AT1/2

(0~31)

TS

DC-A1

DC-PT-10

Programmable

DC-AT1-20

1 2 3 4

1

2

(32)

3

1:4

1-2

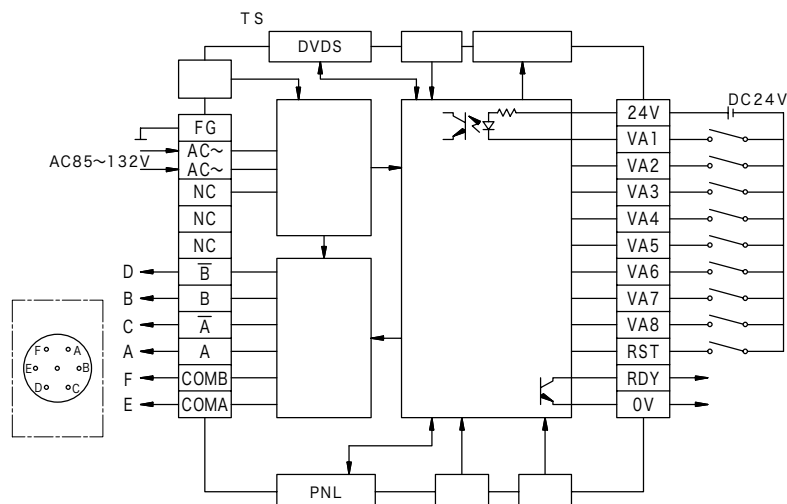
2:4

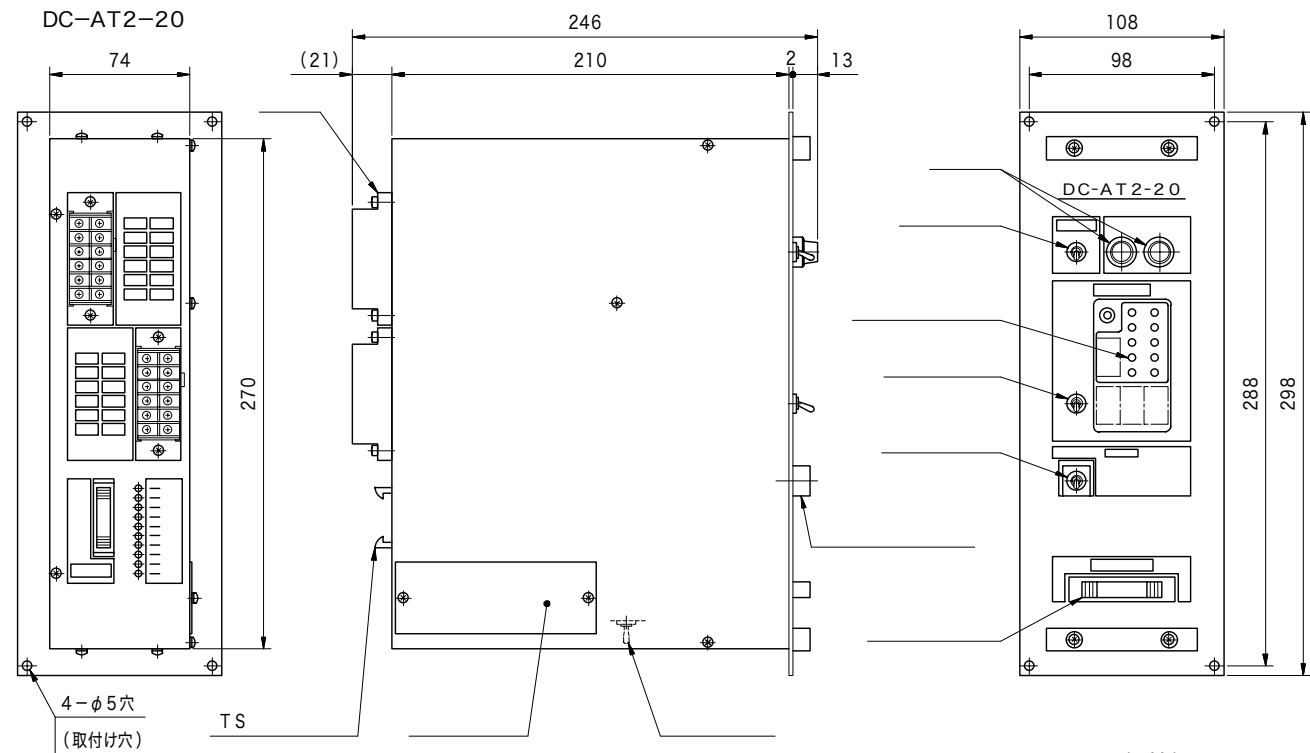
2

4

		DC-AT1-20	DC-AT2-20
		AC85~132 V, 50~60 Hz	
		80 VA	
		DC24 V ± 10 %	
		: 150 mA	
		8 +	
		32	
		0~199	0~99
		-126~+126	-63~+63
		(DC-PT)가	
		4	4
		1-2	2 1.1 A/

K
43





●設定器 DC-PT

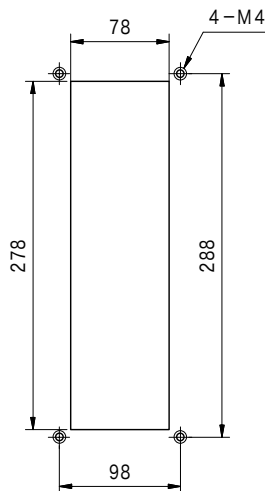
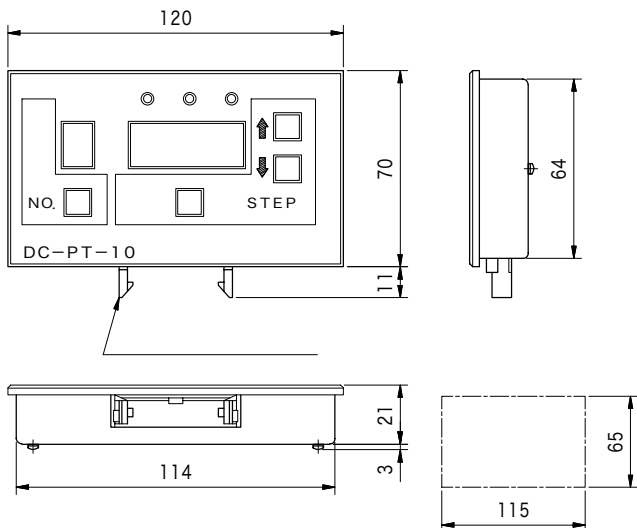
DC-PT-10-(S1)

- 1 2 3 4

- 1
2
3
4

S1:

- : Push ()4
- : 7 LED X 4
- LED ×4
- : a)
- b)
- c) TS, NO

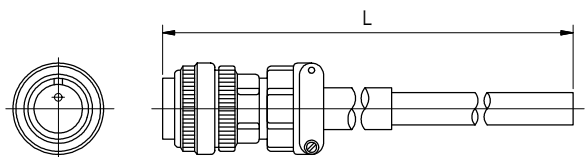


● DC-H-DV-300-10

- 1 2 3 4

- 1
2
3
4

(L)
200:2m 300:3m 600:6m
1000:10m 1500:15m 2000:20m



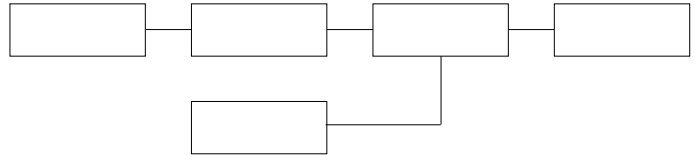
	A	B	C	D	E	F	G
							-

製品の仕様およびデザインは改良などのため予告なく変更する場合があります。

安全に関するご注意 ご使用の際は取扱説明書をよくお読みの上、正しくお使いください。

DC-B*B/B*C

Digital valve drivers



DC-B2B-10

1 2 3 4

1

2

1 : 4

2 : 4

4 : 5

1 - 2

2

5

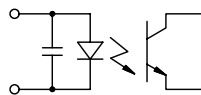
3

B : AC100 V

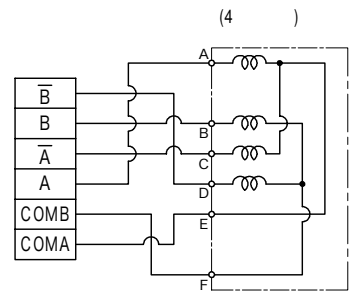
C : DC24 V

4

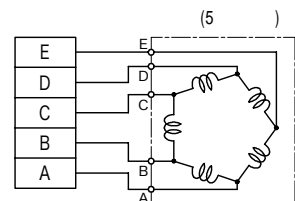
	B : AC100 V ±15 %, 50/60 Hz
	C : DC24 V ±10 %
	B : 60 VA (max.)
	C : 30 VA (max.)
	(20mS)3 TRUE 20mA ±20 % FALSE 0.5 mA 70 μs
	*CW : *CCW : * :
	B1B/C, B2B/C : 1.1 A/ B4B/C : 0.75 A/
	B1B/C : 4 1-2
	B2B/C : 4 2
	B4B/C : 5 4
	B1B/C : 1800 pps B2B/C : 900 pps B4B/C : 2200 pps
kg	DC-B*C : 0.8 DC-B*B : 3.2



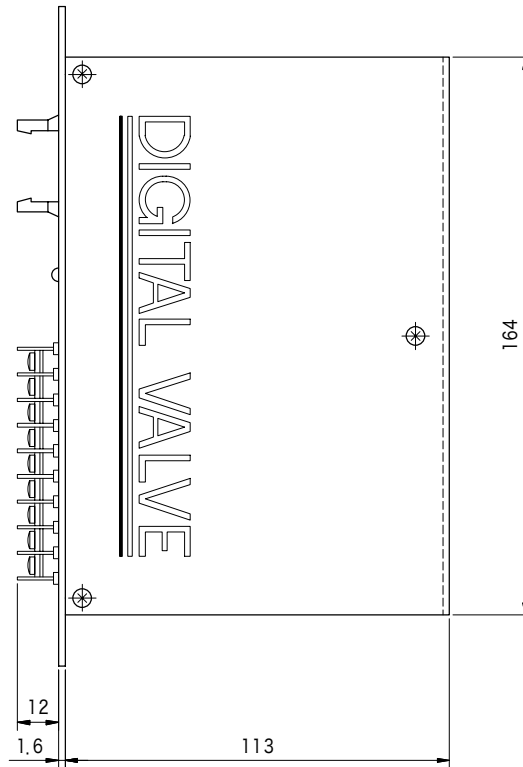
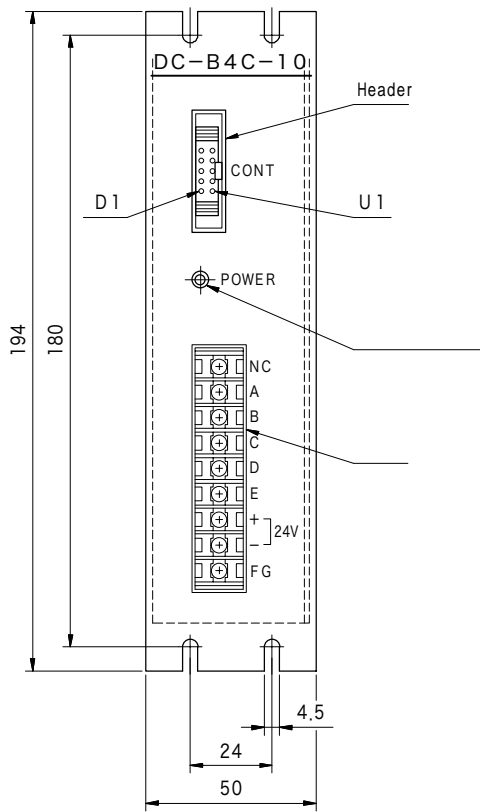
● DC-B1B/C
DC-B2B/C



DC-B4B/C

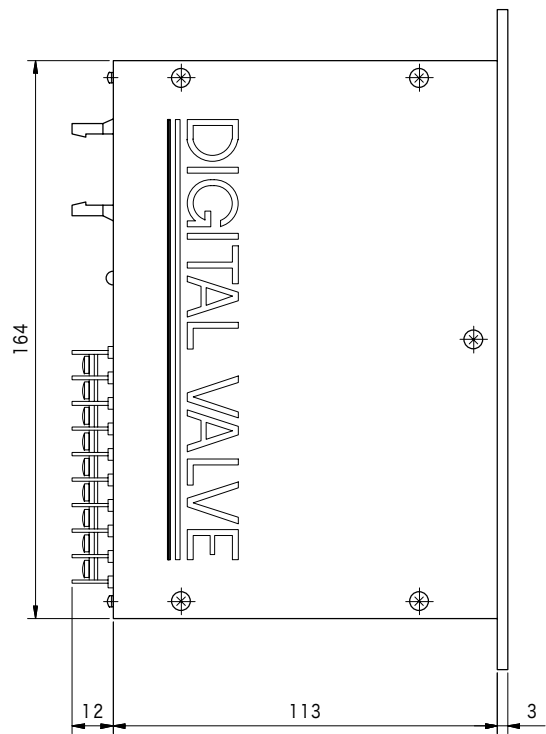
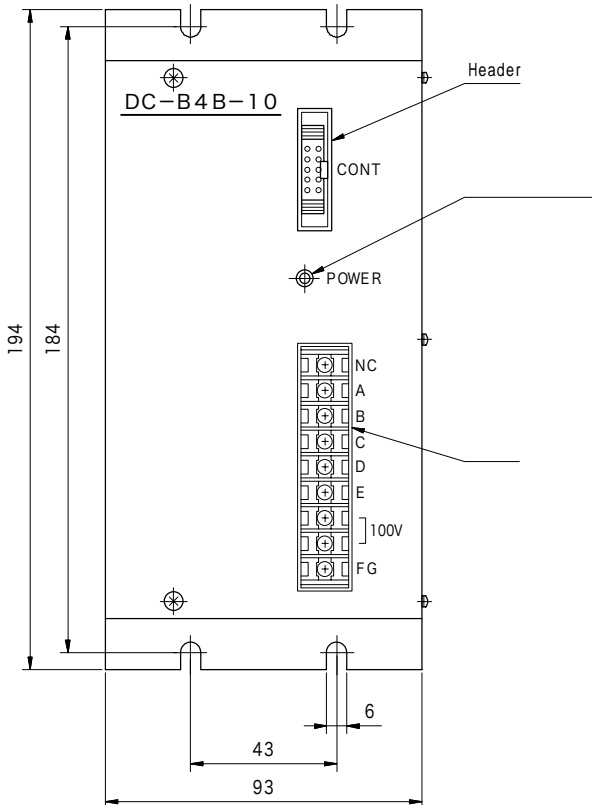


DC-B*C-10



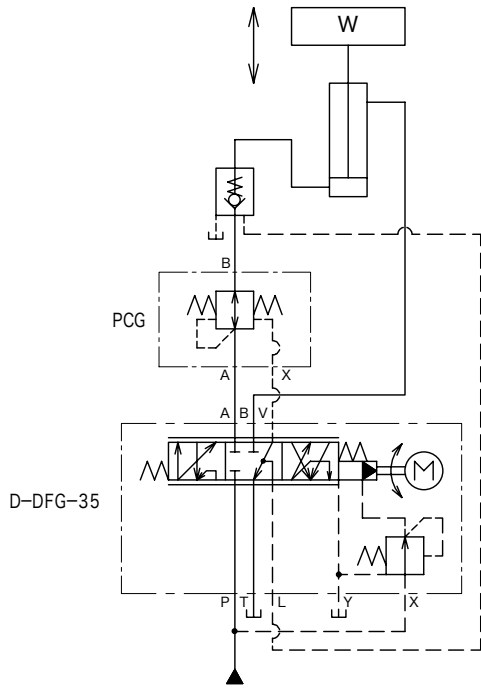
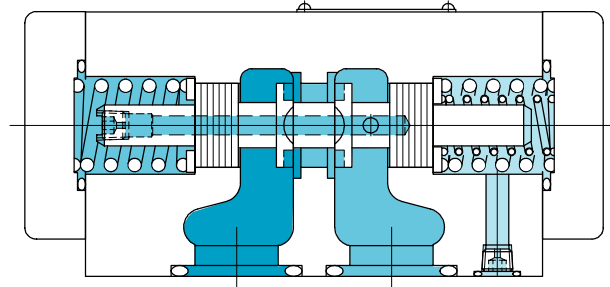
K
46

DC-B*B-10



PCG

Pressure compensators



PCG-04-XB-130-12

1 2 3 4

1 (가)

2 「 」

3 「 」

4
12:PCG-04
10:PCG-10

	MPa	L/min	kg
PCG-04-130	21	130	4.5
PCG-10-250	21	250	15

1—Mpa(10(kgf/cm²))

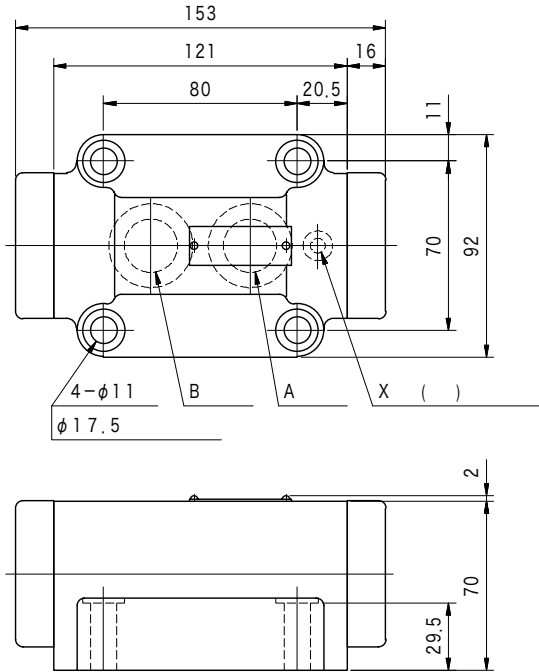
(JIS B 1176 12.9)

		Rc (PT)		
PCG-04	PCGM-04-10	3/4	M10×45	4
PCG-10	RXGM-10-20-JA-J	1-1/4	M10×105	6
	RXGM-10X-20-JA-J	1-1/2	3/8-16UNC×107.9	

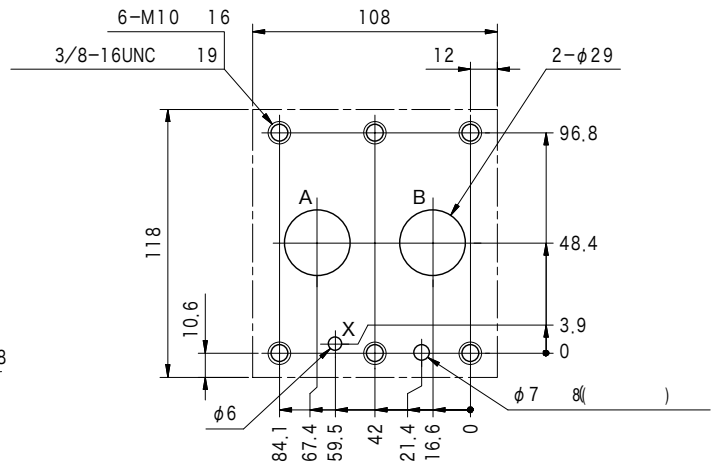
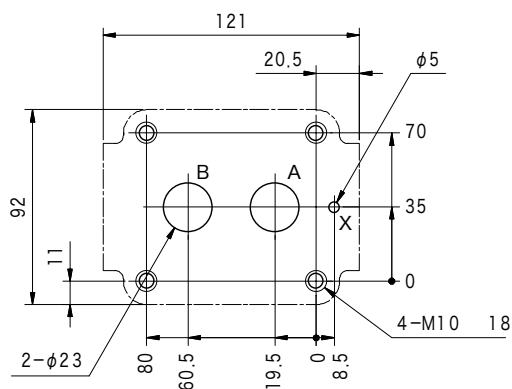
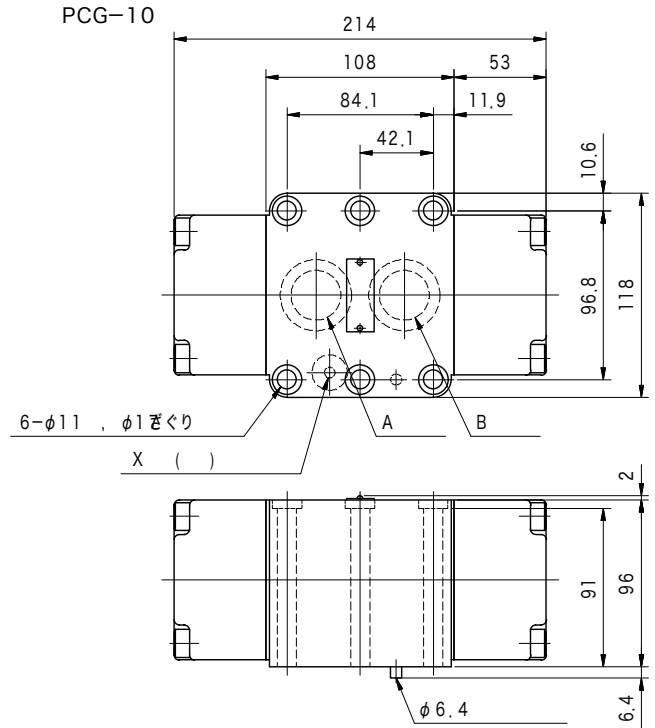
Q4, Q11 page

PCG-04/10 : 50~60 N·m

PCG-04

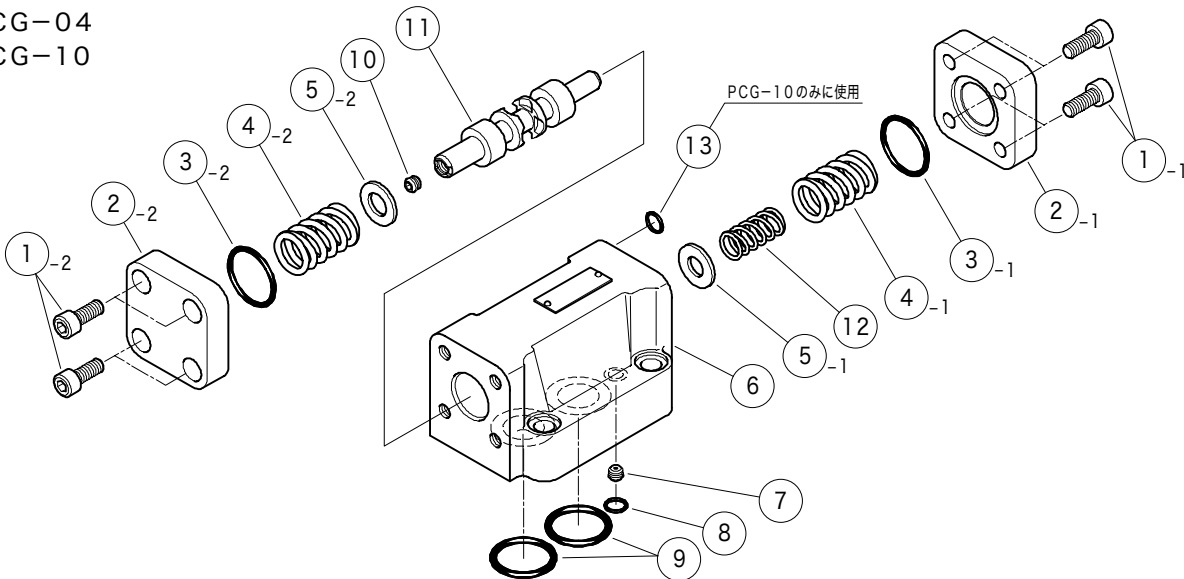


PCG-10



K
48

PCG-04
PCG-10



PCG-04 O

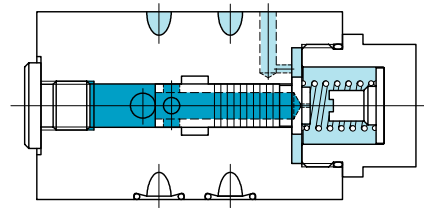
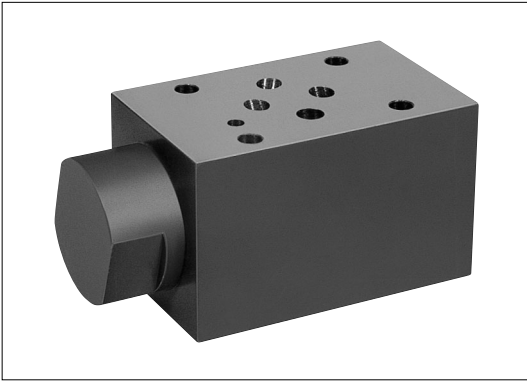
Part No.	Code	Description	Quantity
3	007912319	AS568-123 (NBR, Hs90)	2
8	007901219	AS568-012 (NBR, Hs90)	1
9	007921619	AS568-216 (NBR, Hs90)	2

PCG-10 O

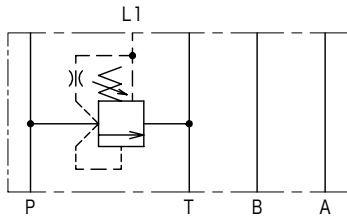
Part No.	Code	Description	Quantity
3	007913319	AS568-133 (NBR, Hs90)	2
8	007911419	AS568-114 (NBR, Hs90)	1
9	007922019	AS568-220 (NBR, Hs90)	2
13	007901219	AS568-012 (NBR, Hs90)	1

() TGMHR-3

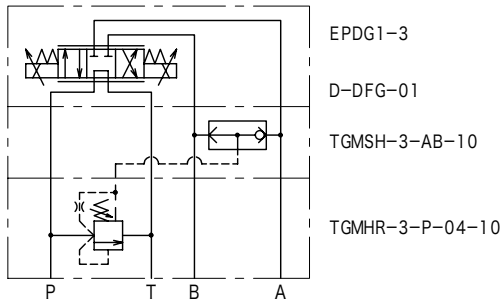
Pressure compensator module (by-pass type)



● (D-DFG-01,EPDG1-3)
(TGMHR-3)



	MPa	L/min	MPa	kg
TGMHR-3	21	30	0.4	1.1



2	007902317	AS568-023 (NBR, Hs70)	1
6	007901217	AS568-012 (NBR, Hs70)	4

TGMHR-3-P-04-10

1 2 3 4 5

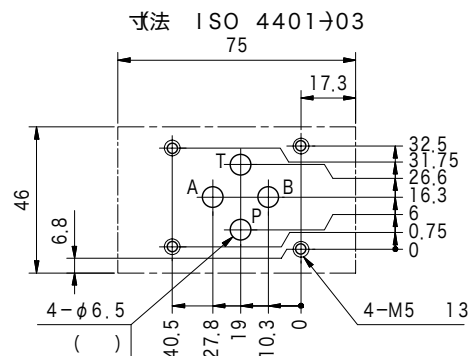
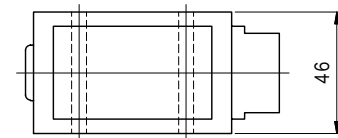
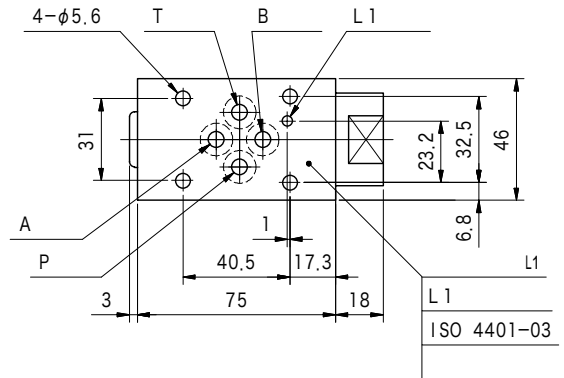
1 ()

2 3: ISO 4401-03

3 P: P

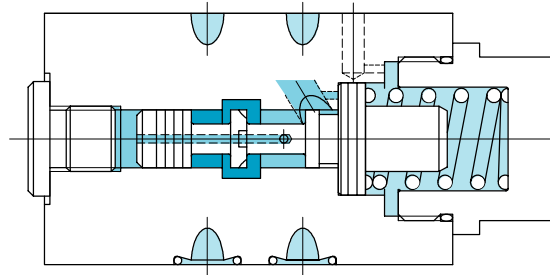
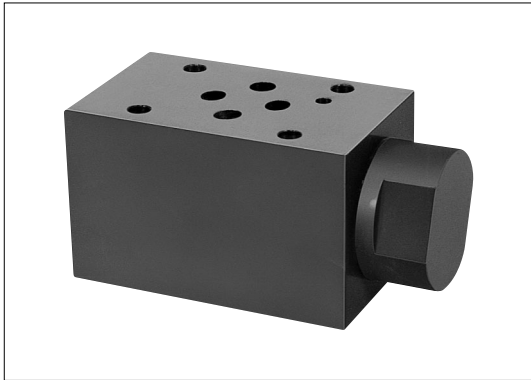
4 04:0.4 MPa

5



() TGMHX

Pressure compensator module (series type)

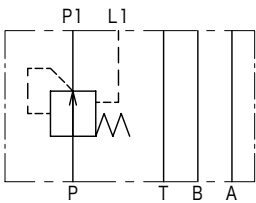


(D-DFG)

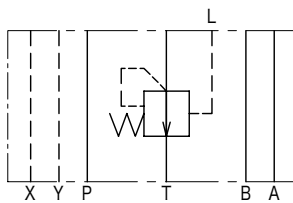
● TGMHX-3

(TGMHX-3)가

TGMHX-3



TGMHX-7/8



K
50

TGMHX-3-P-04-10

1 2 3 4 5

1 ()

2

3: ISO 4401-03

7: ISO 4401-07

8: ISO 4401-08

3 ()

P: P (TGMHX-3)

T: T (TGMHX-7/8)

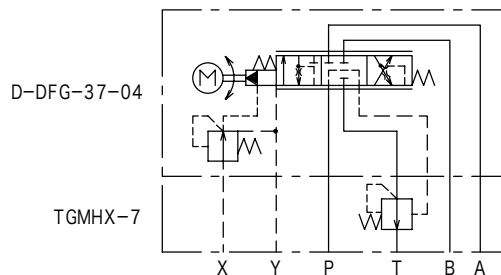
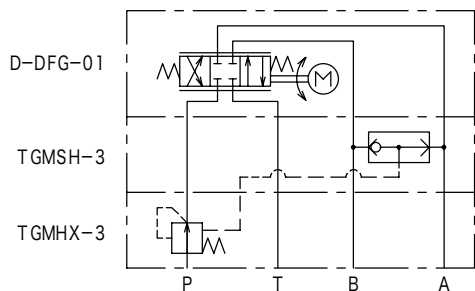
4 (TGMHX-3)

04: 0.4 MPa(4kgf/cm²)

5

	MPa	L/min	L/min	kg
TGMHX-3	21	25	下表参照	1.1
TGMHX-7		130	0.5	12
TGMHX-8		250	0.5	21

-	Mpa(kgf/cm ²)	L/min
	3.5	0.1
	7	0.15
	10.5	0.2
	14	0.25
	17.5	0.3
	21	0.35



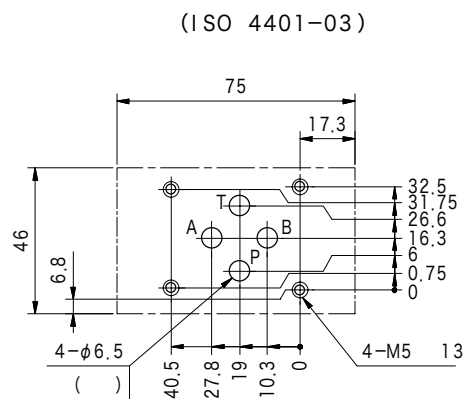
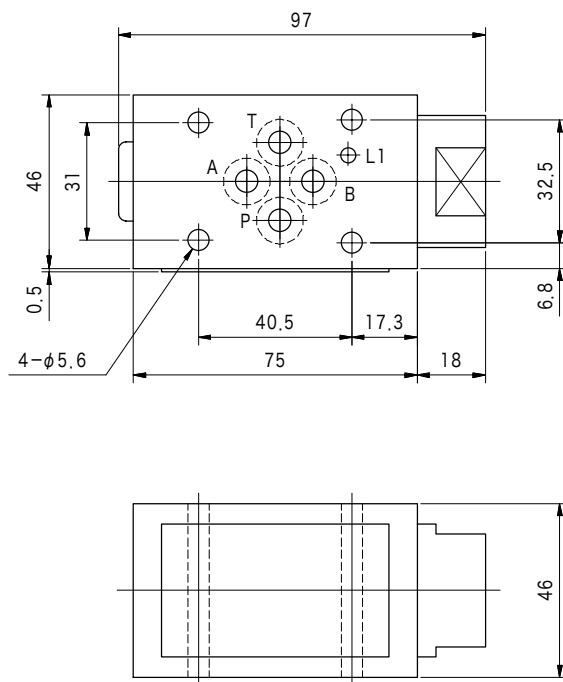
(JIS B 1176

12.9)

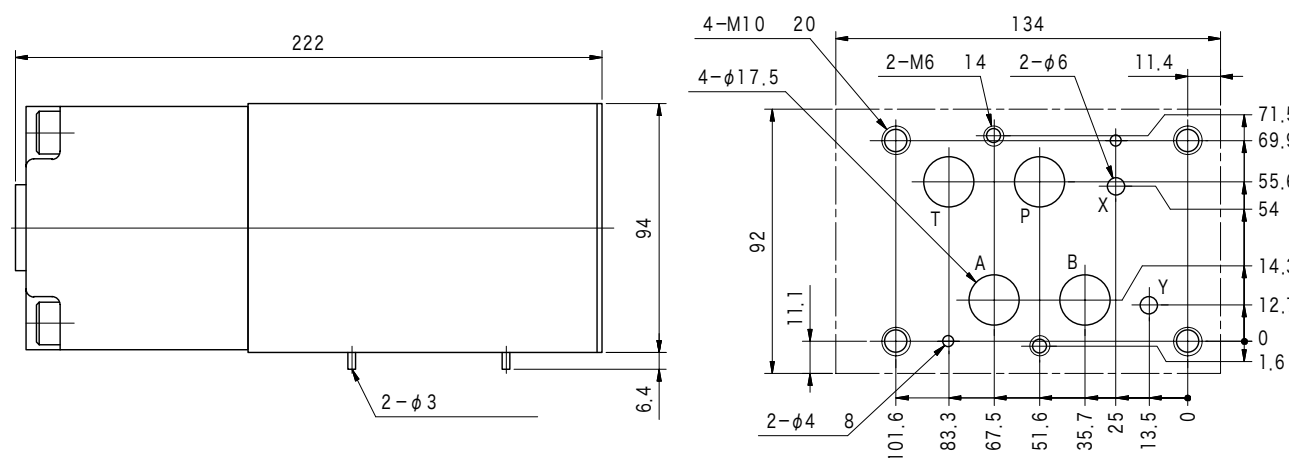
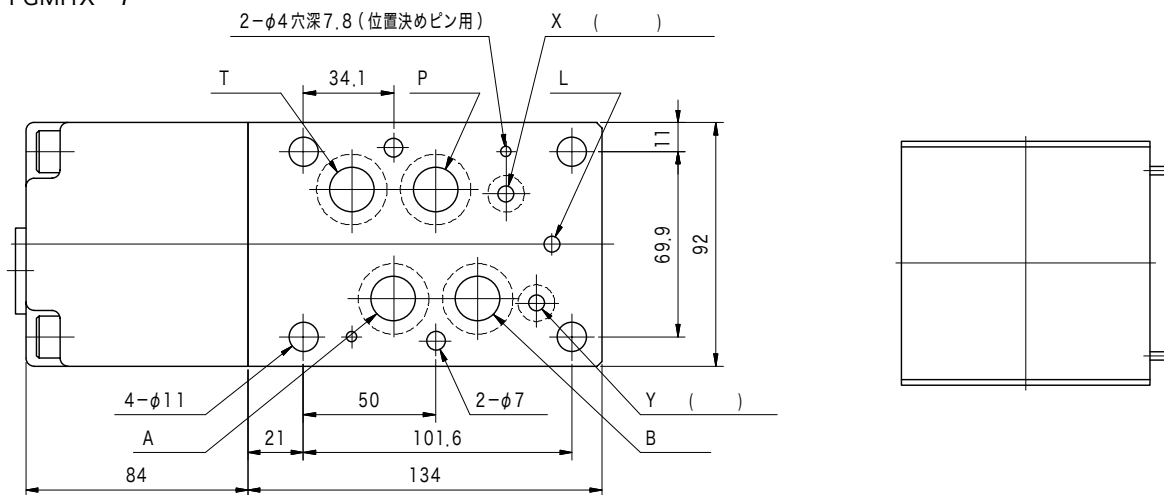
		Rc		
TGMHX-7	DEFGM-04X-10	3/4	M 6×140	2
			M10×145	4
TGMHX-8	DEFGM-06X-11	1	M12×160	6

- (D-DFG-37-04/06)
(TGMHX-7/8)
-
- サブプレートの外形寸法はQ10ページを参照してください。
-
- TGMHX-7 : M6.....9~14 N・m
M10.....50~60 N・m
- TGMHX-8 : 75~81 N・m

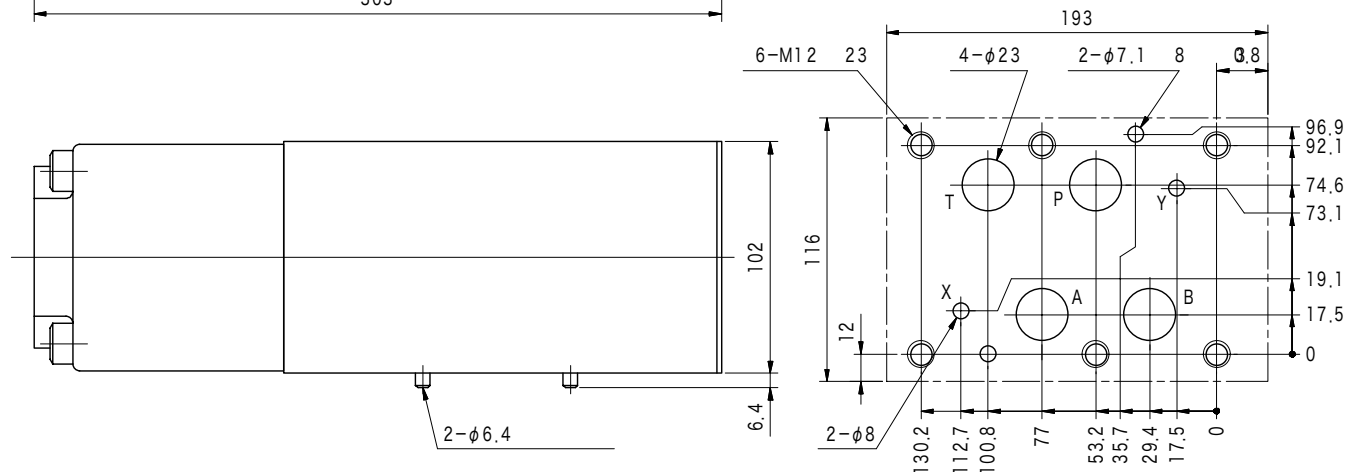
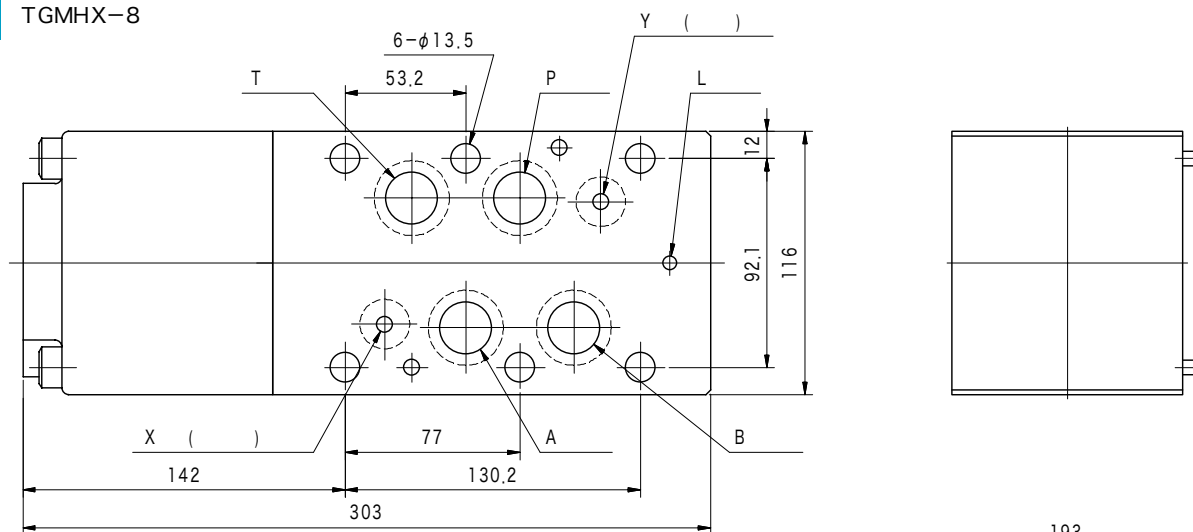
TGMHX-3



TGMHX-7

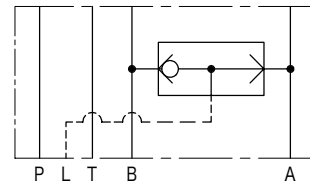
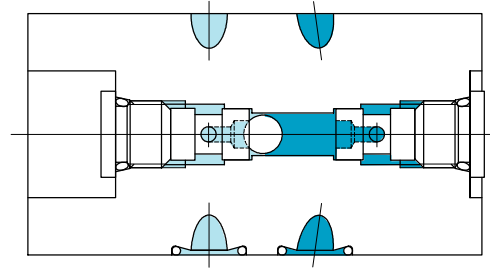
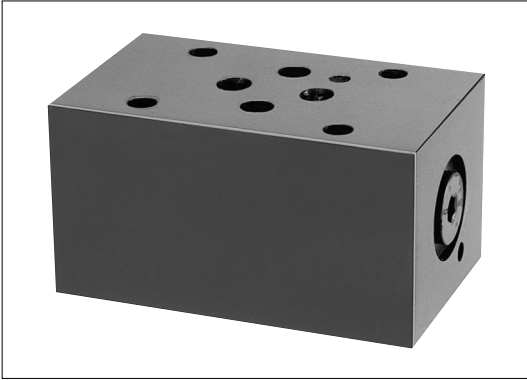


TGMHX-8



TGMSH-3

Shuttle module



TGMSH-3-AB-10

1 2 3 4

1
2

3: ISO 4401-03 (L 가)

3

AB: A, B

4

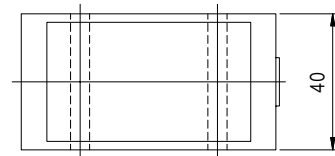
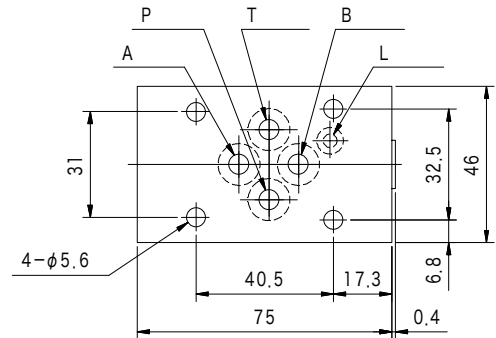
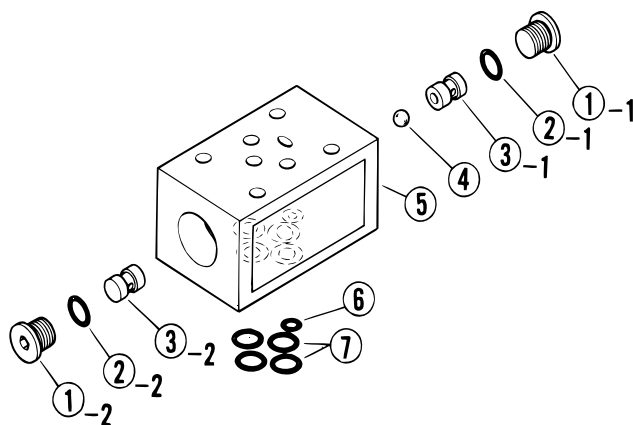
	MPa	L/min	kg
TGMSH-3	21	1	0.85

(JIS B 1176 12.9)

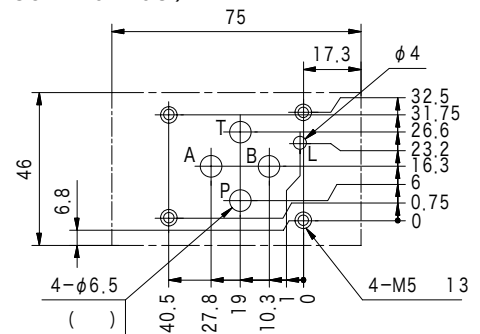
● (EPDG1-3 D-DFG-01)
(TGMSH-3) (TGMHR-3 TGMHX-3)

M5×135	4
--------	---

● : 7~8 N·m



(ISO 4401-03)



O			
2	007990419	AS568-904 (NBR, Hs90)	2
6	007900917	AS568-009 (NBR, Hs70)	1
7	007901217	AS568-012 (NBR, Hs70)	4