

EP ,DEF(R)G, ST3, HVM

Proportional control valves, Servo valves

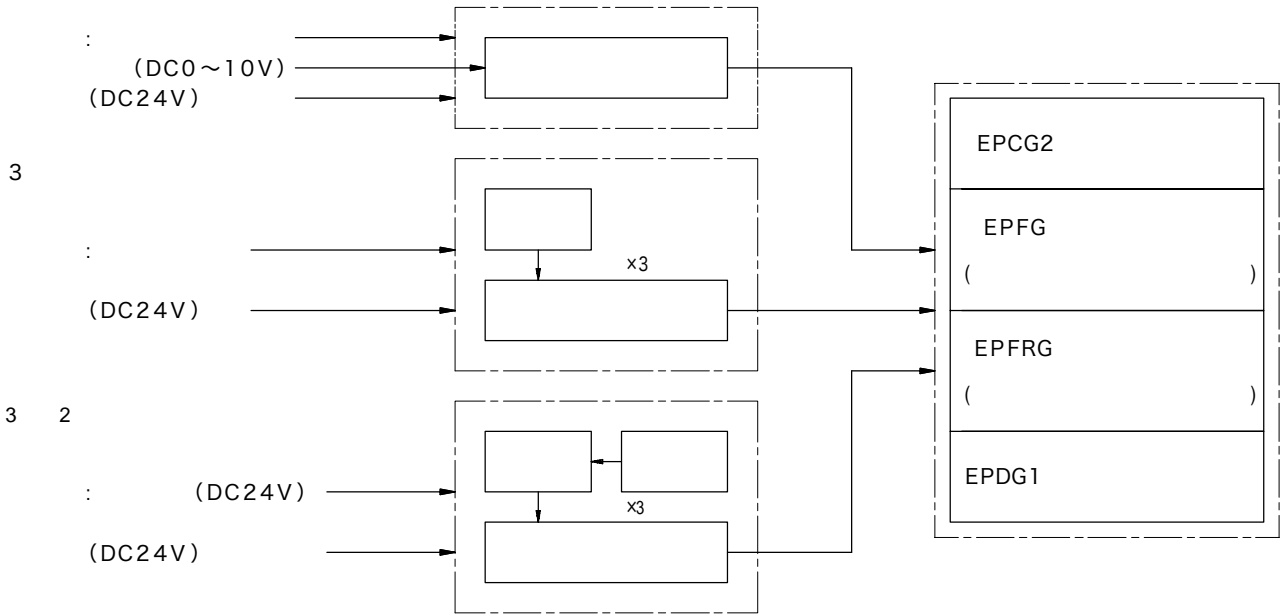


		MPa	L/min										page		
			1	2	5	10	20	50	100	200	500	1000			
	EPCG2-01	21	█												J5
	EPCG2	21	█							03	06	10			J8
	EPFG-01	21	█												J13
()	EPFG	21 (17.5)	█							03	06	10			J16
()	EPFRG	21	█							02	03	06	10		J16
(3)	EPDG1-3	21	█												J25
EP	EPAD	—													J28
EP	P-X P-Z	—													J31
EP	PB-X PB-Z	—													J33
EP	EPA	—													J34
	EC-4S	—													J36
3	ST3	21	█							7	H7			J38	
ST 3	STC-Y	—													J41

●
●가

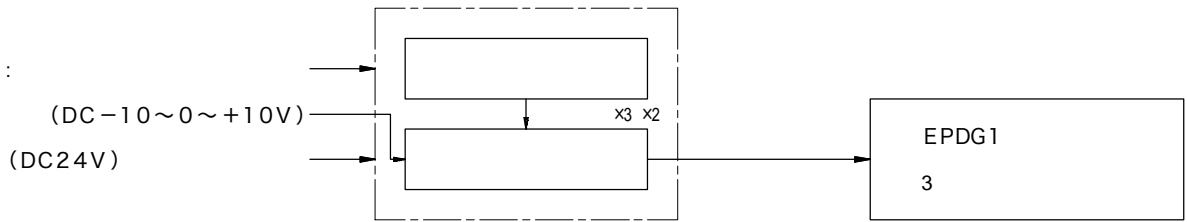
OPEN

EP

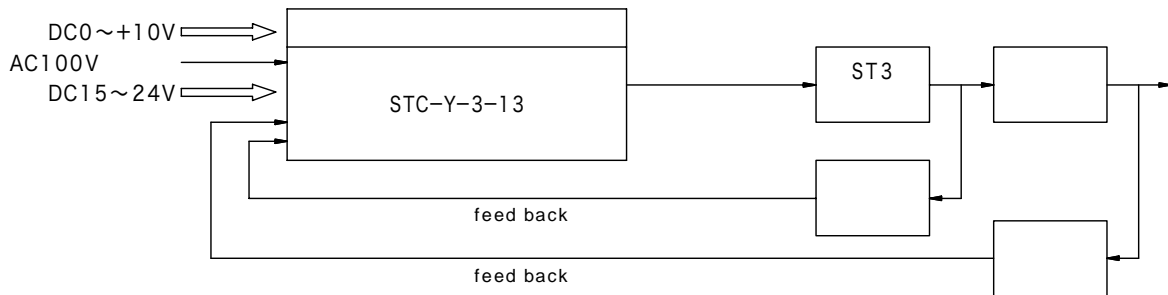
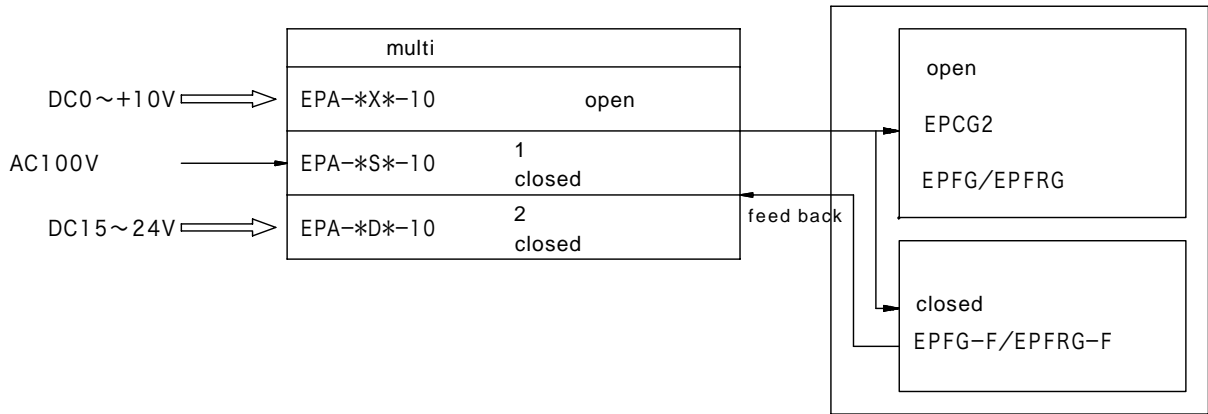
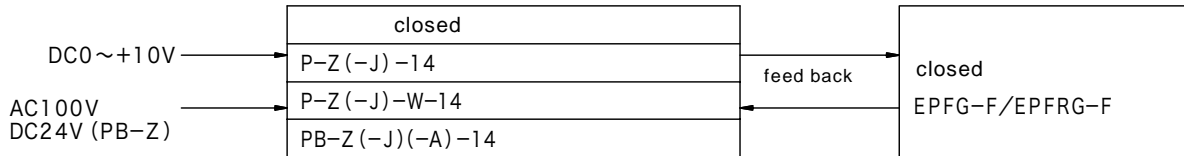
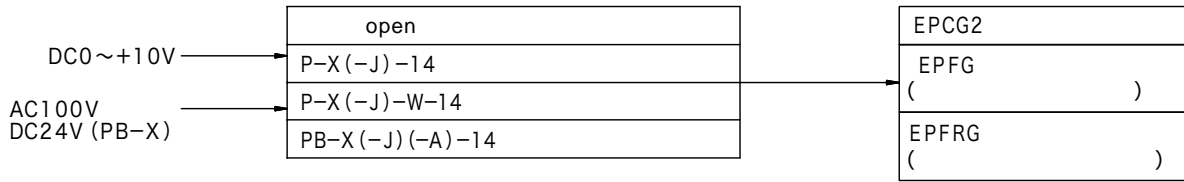


OPEN

EPDG 1

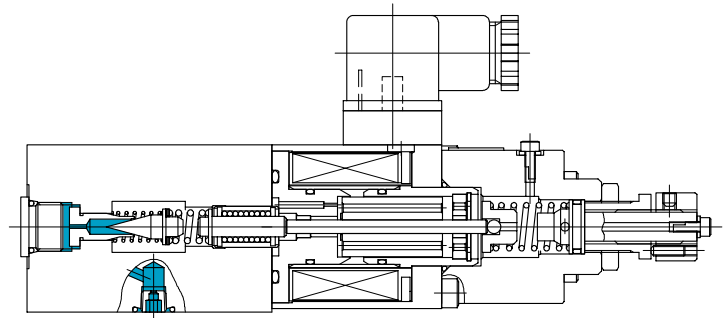


14Ω 1A

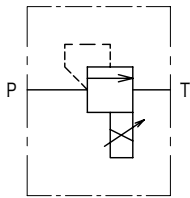


EPCG2-01

Proportional relief valves (direct operated type)



EPCG2-01



が

EPCG2-01-210-11

1 2 3 4

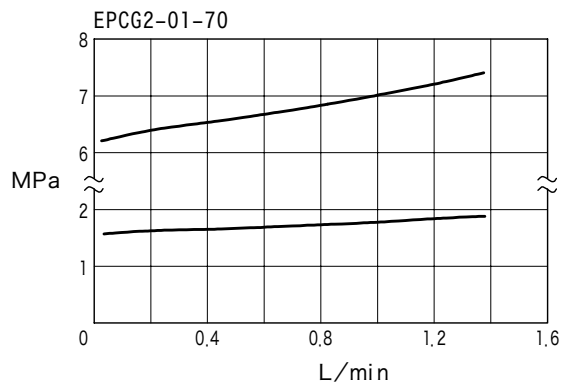
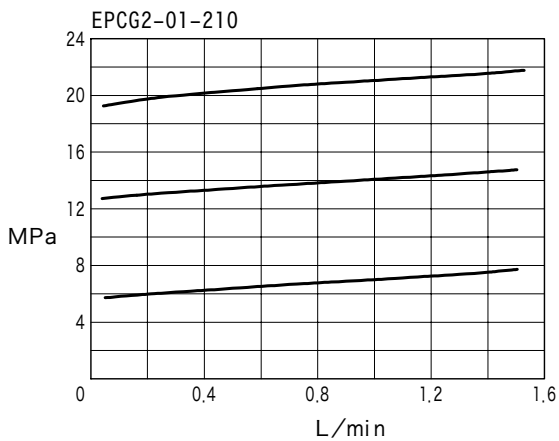
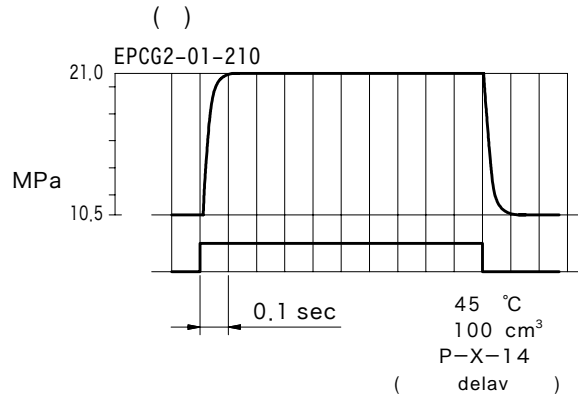
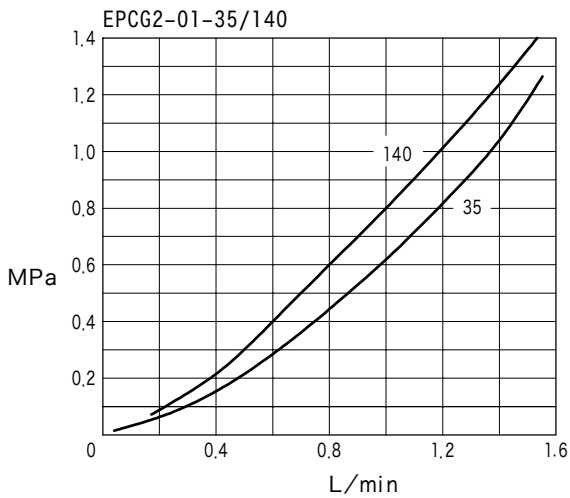
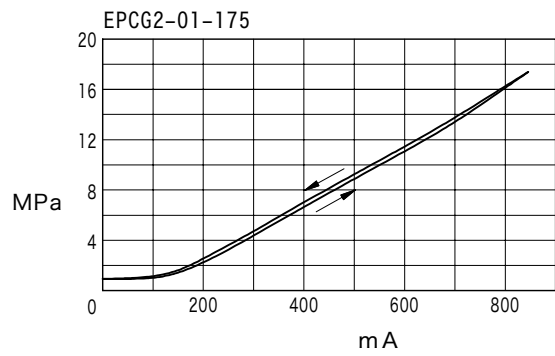
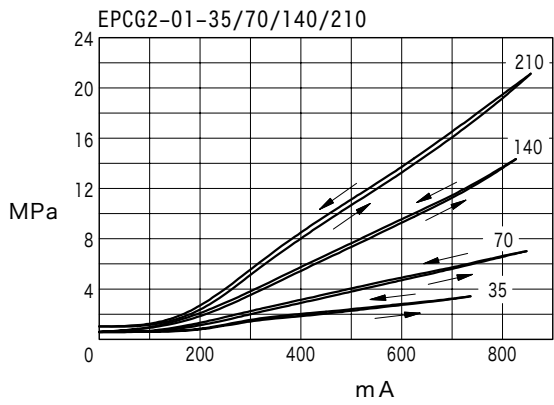
1
2

3
4

		EPCG2				
		01				
MPa		21				
L/min		0.3~1.5				
		35	70	140	175	210
MPa		0.7~3.5	1~7	1~14	1~17.5	1~21
A		1				
Ω		14				
		3 % (1)				
		1 % (2)				
		kg 2.5				

1) P-X-14
2)

(20 mm²/s(cst))



J
6

比例電磁式制御弁・サーボ弁

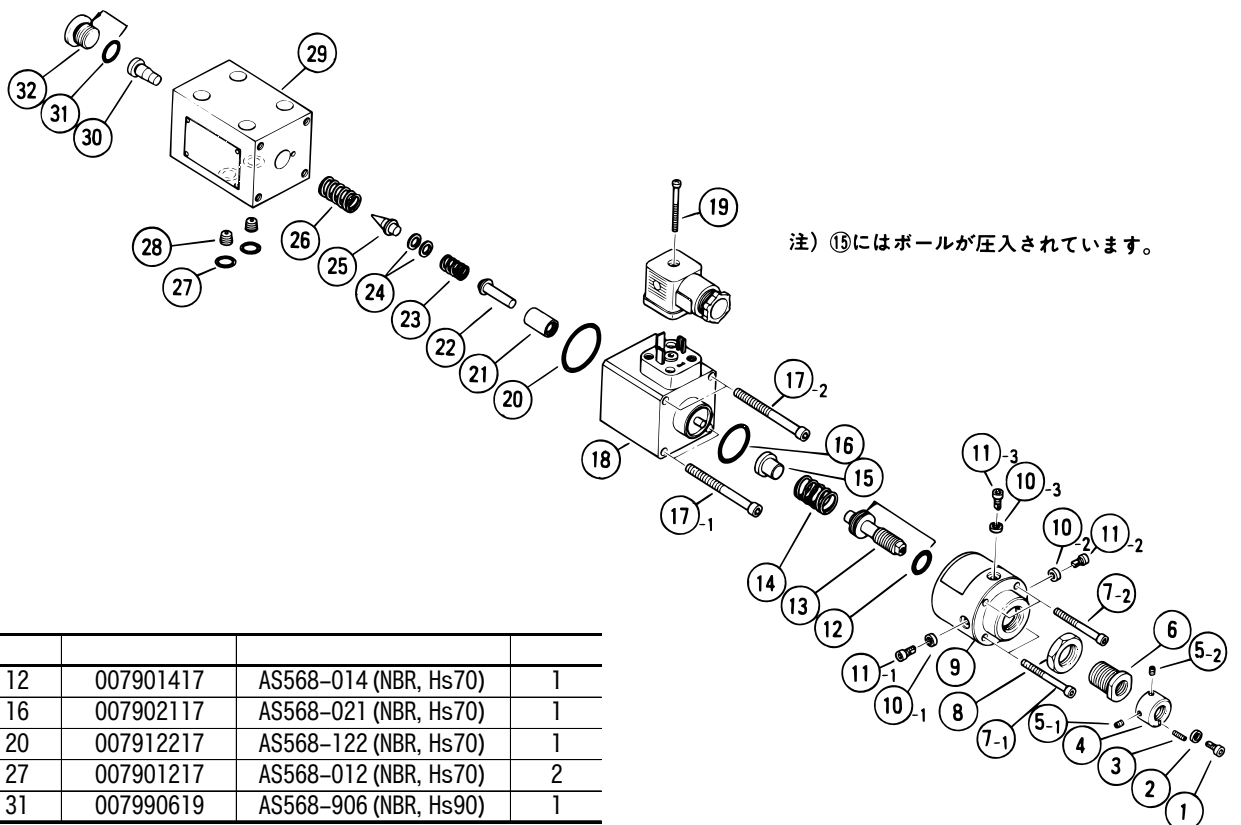
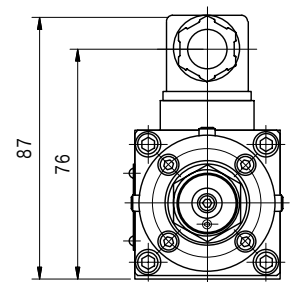
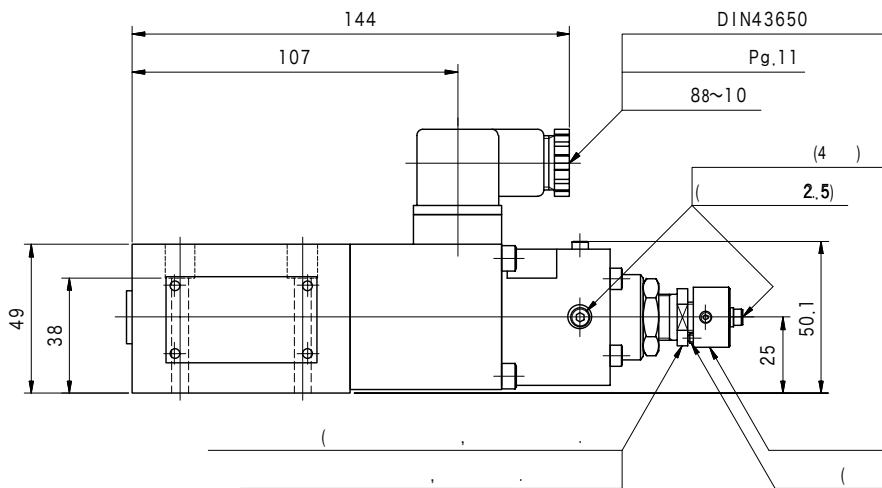
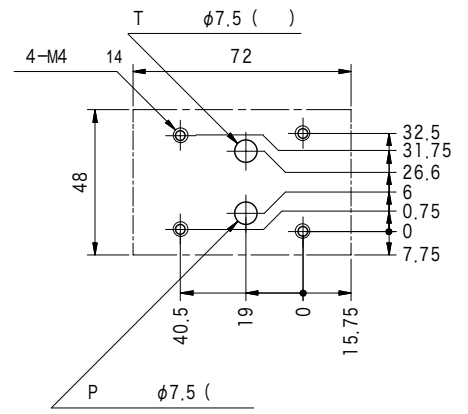
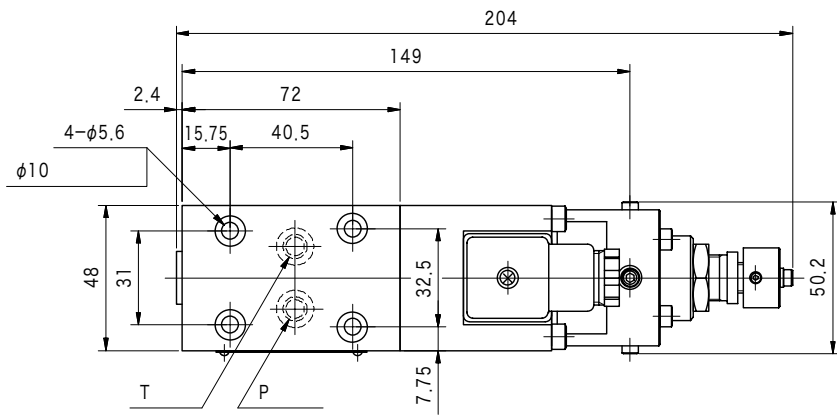


●
●
●
●
● T
0.3 L/min
0.2 MPa (2 kgf/cm²)

(JIS B 1176 12.9)

M5×50		4
: 7~8 N·m		
		Rc
DGMS-3-1E-10-T-JA-J		3/8
DGVN-3-10-T-JA-J		

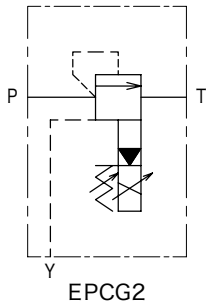
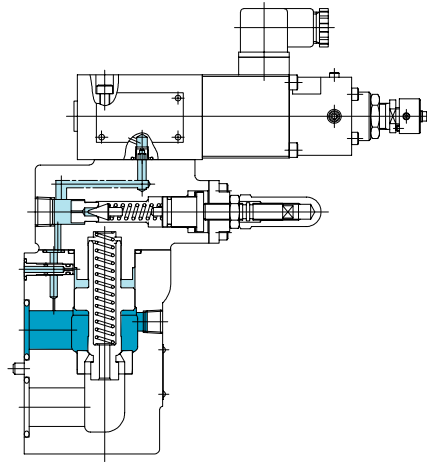
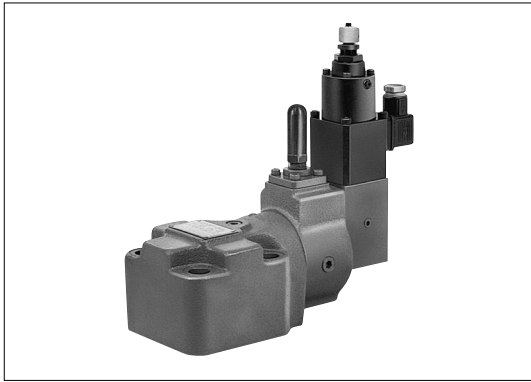
●
●
●
Q8 page



Part No.	Code	Description	Quantity
12	007901417	AS568-014 (NBR, Hs70)	1
16	007902117	AS568-021 (NBR, Hs70)	1
20	007912217	AS568-122 (NBR, Hs70)	1
27	007901217	AS568-012 (NBR, Hs70)	2
31	007990619	AS568-906 (NBR, Hs90)	1

EPCG2-03/06/10

Proportional relief valves



J
8

比例電磁式制御弁・サーボ弁

EPCG2-06-210-Y-L-13

1 2 3 4 5 6

1
2
3

「 」

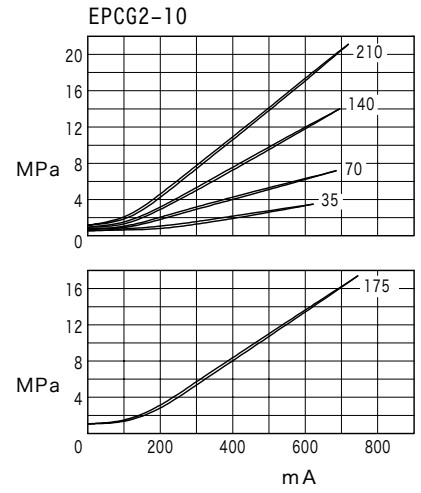
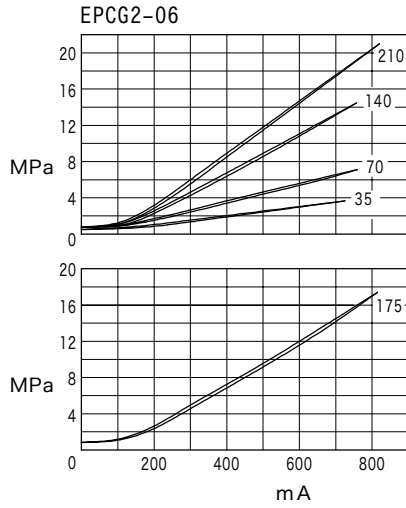
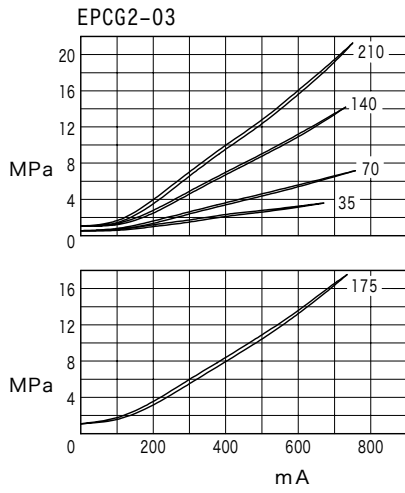
4
5
6

Y: ()
: L:

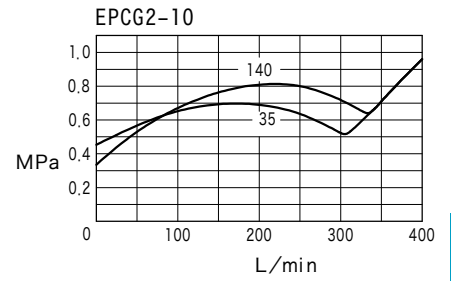
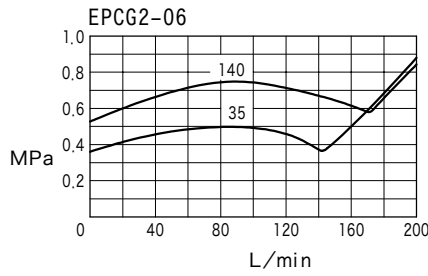
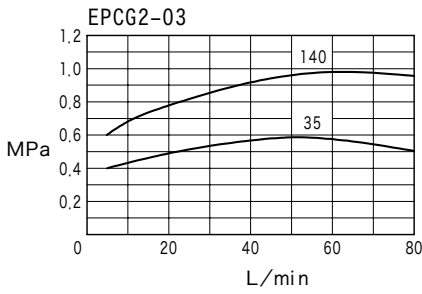
		EPCG2		
		03	06	10
MPa		21		
L/min		80	200	400
(3)	MPa	35	3.5	
		70	7	
		140	14	
		175	17.5	
		210	21	
A		1		
Ω		14		
		3 % (1)		
		1 % (2)		
kg		7	10	15

1) P-X-14
2)
3)

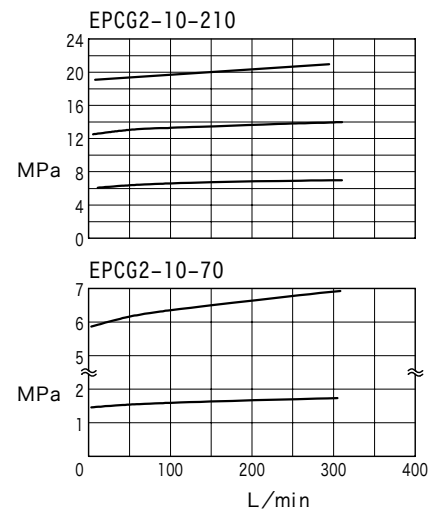
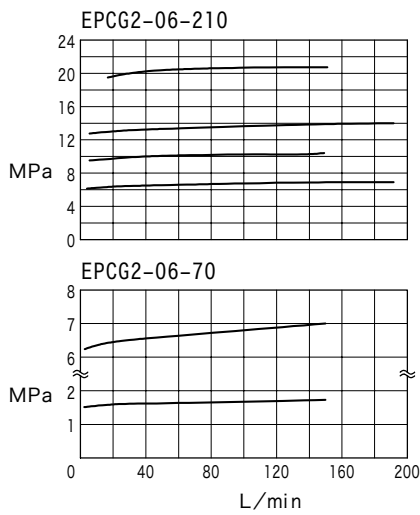
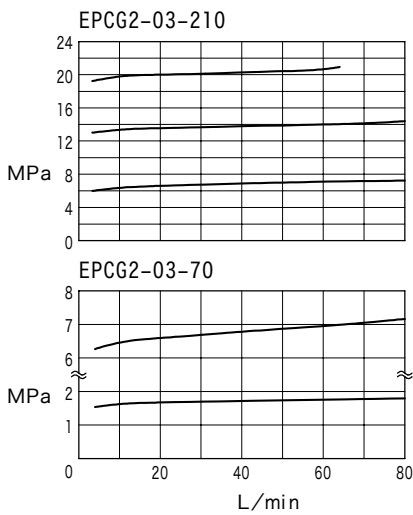
- ()



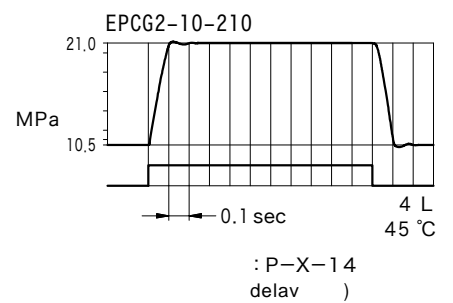
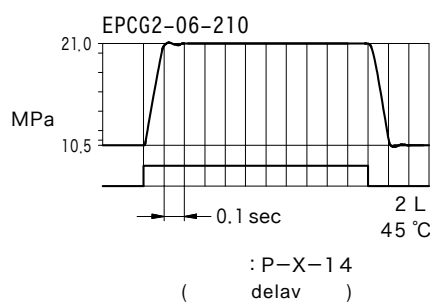
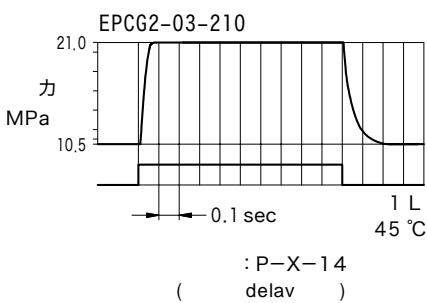
()



-

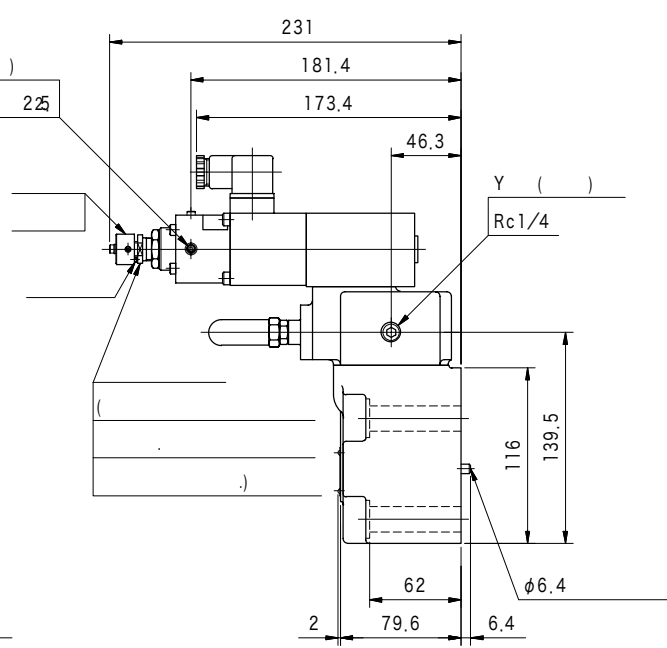
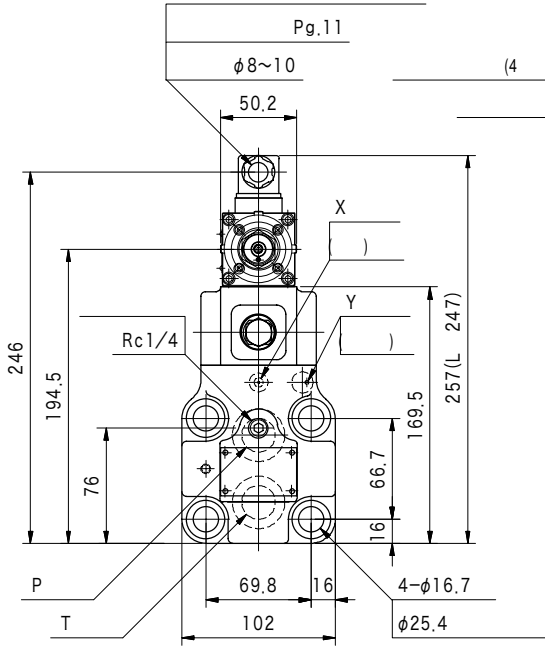


()

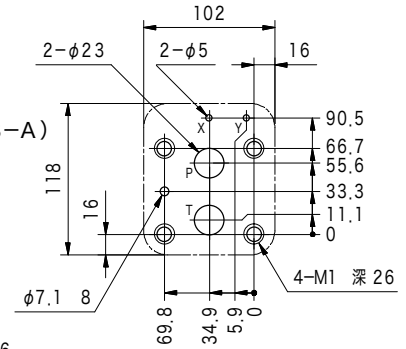


EPCG2-06

(DIN43650)

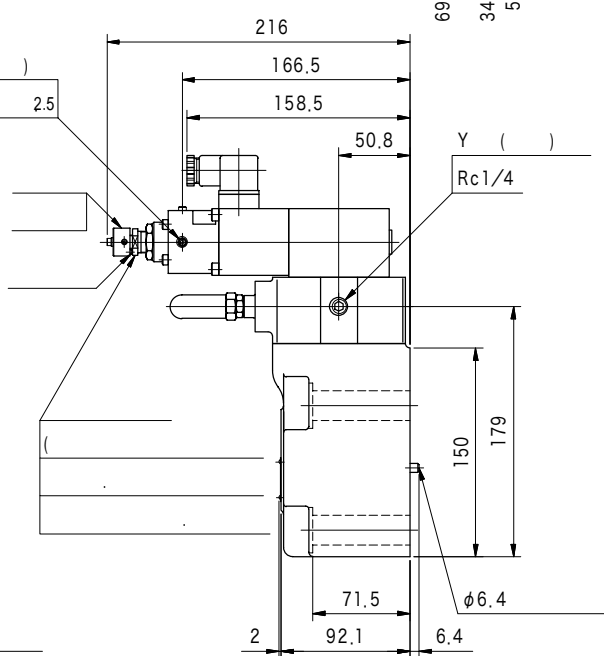
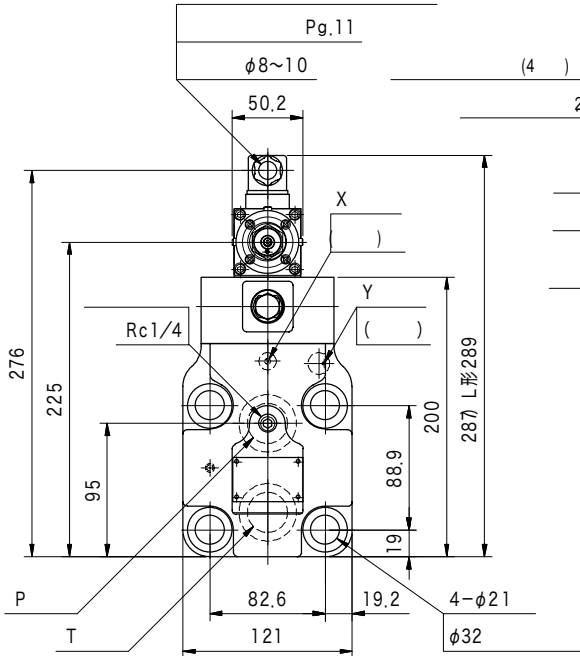


(ISO 6264-08-A)

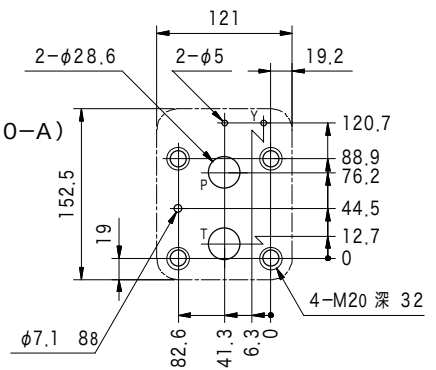


EPCG2-10

(DIN43650)

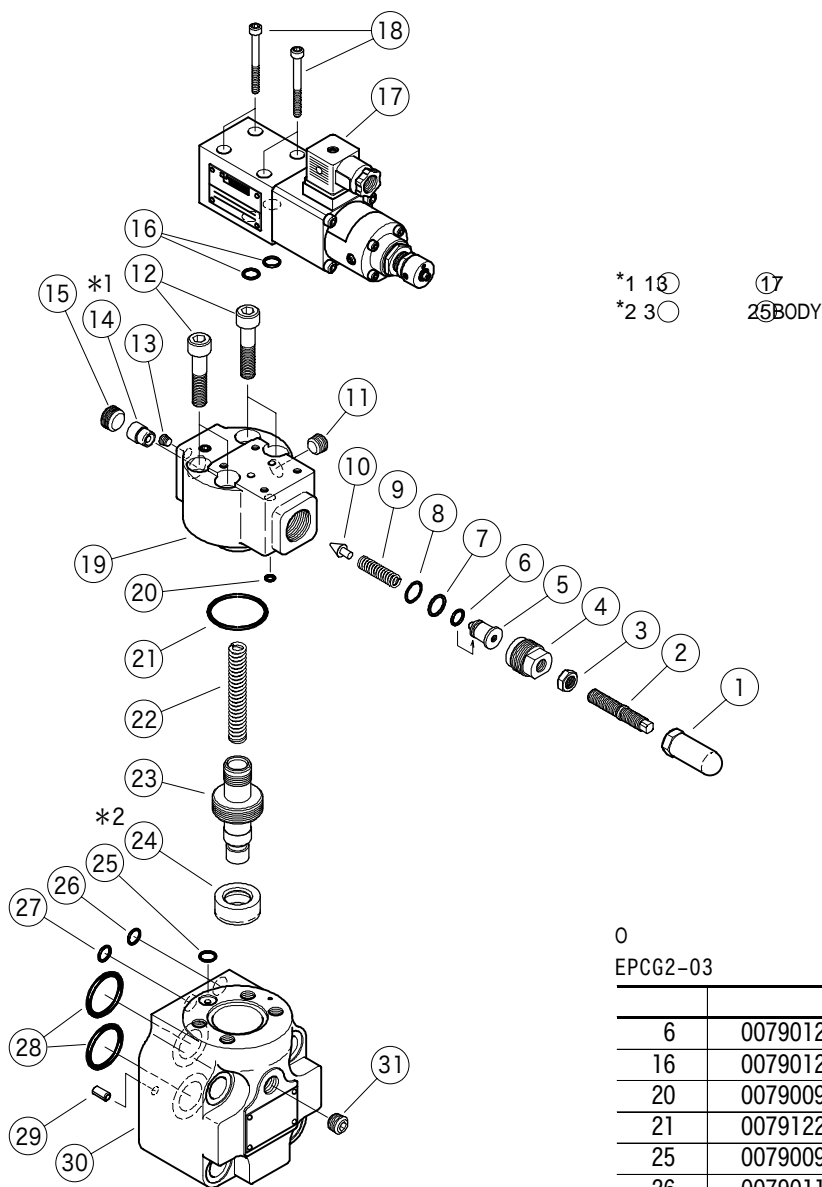


(ISO 6264-10-A)



0

(L)



*1 ⑱
*2 ⑳

⑰
25 BODY

EPCG2-03

	⑨	㉔
35	VP2280	VA24150
70	VA15049	VA15401
140~210	VP2281	VA15401

EPCG2-06

	9	㉔
35	VP2280	VA29663
70	VA15049	VA14894
140~210	VP2281	VA14894

EPCG2-10

	⑨	㉔
35	VP2280	VA28580
70	VA15049	VA15105
140~210	VP2281	VA15105

0
EPCG2-03

6	007901217	AS568-012 (NBR, Hs70)	1
16	007901217	AS568-012 (NBR, Hs70)	2
20	007900919	AS568-009 (NBR, Hs90)	1
21	007912219	AS568-122 (NBR, Hs90)	1
25	007900919	AS568-009 (NBR, Hs90)	1
26	007901119	AS568-011 (NBR, Hs90)	1
27	007901119	AS568-011 (NBR, Hs90)	1
28	007911519	AS568-115 (NBR, Hs90)	2

EPCG2-06

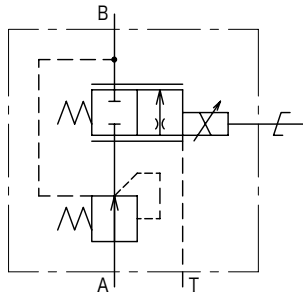
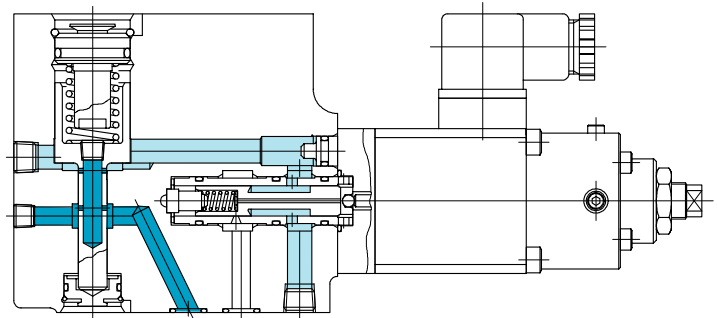
6	007901217	AS568-012 (NBR, Hs70)	1
16	007901217	AS568-012 (NBR, Hs70)	2
20	007900819	AS568-008 (NBR, Hs90)	1
21	VA11168	—	1
25	007901219	AS568-012 (NBR, Hs90)	1
26	007911019	AS568-110 (NBR, Hs90)	1
27	007901219	AS568-012 (NBR, Hs90)	1
28	007921619	AS568-216 (NBR, Hs90)	2

EPCG2-10

6	007901217	AS568-012 (NBR, Hs70)	1
16	007901217	AS568-012 (NBR, Hs70)	2
20	007901219	AS568-012 (NBR, Hs90)	1
21	007922419	AS568-224 (NBR, Hs90)	1
25	007901219	AS568-012 (NBR, Hs90)	1
26	007901419	AS568-014 (NBR, Hs90)	1
27	007901219	AS568-012 (NBR, Hs90)	1
28	007922019	AS568-220 (NBR, Hs90)	2

EPFG-01

Proportional flow control valves (direct operated type)



EPFG-01-5-15-10

1 2 3 4

1 (가)

2

3 「 」

4

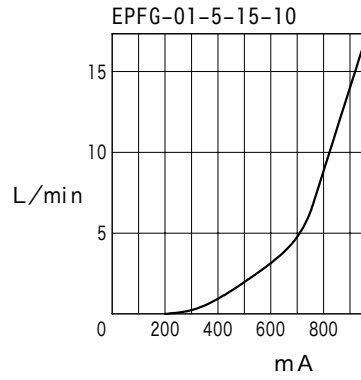
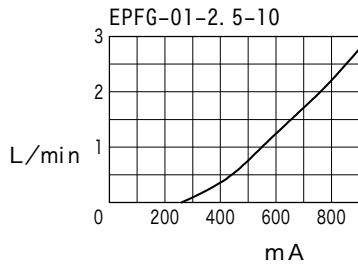
		EPFG			
		01			
		21			
MPa		2.5	10	5-15	15
L/min		0.03			
L/min		2.5	10	15	15
A		1			
Ω		14			
		4 % (1)			
		1 % (2)			
		kg 5			

1) P-X-14

2)

(20 mm²/s(cSt))

- ()



3 90 1 가

가

T () 0.2Mpa(2kgf/cm)

() 가 ()

10 μm

10L/min 1Mpa(10KGf/CM) 2MPa(20kgf/cm)

(JIS B 1176 12.9)

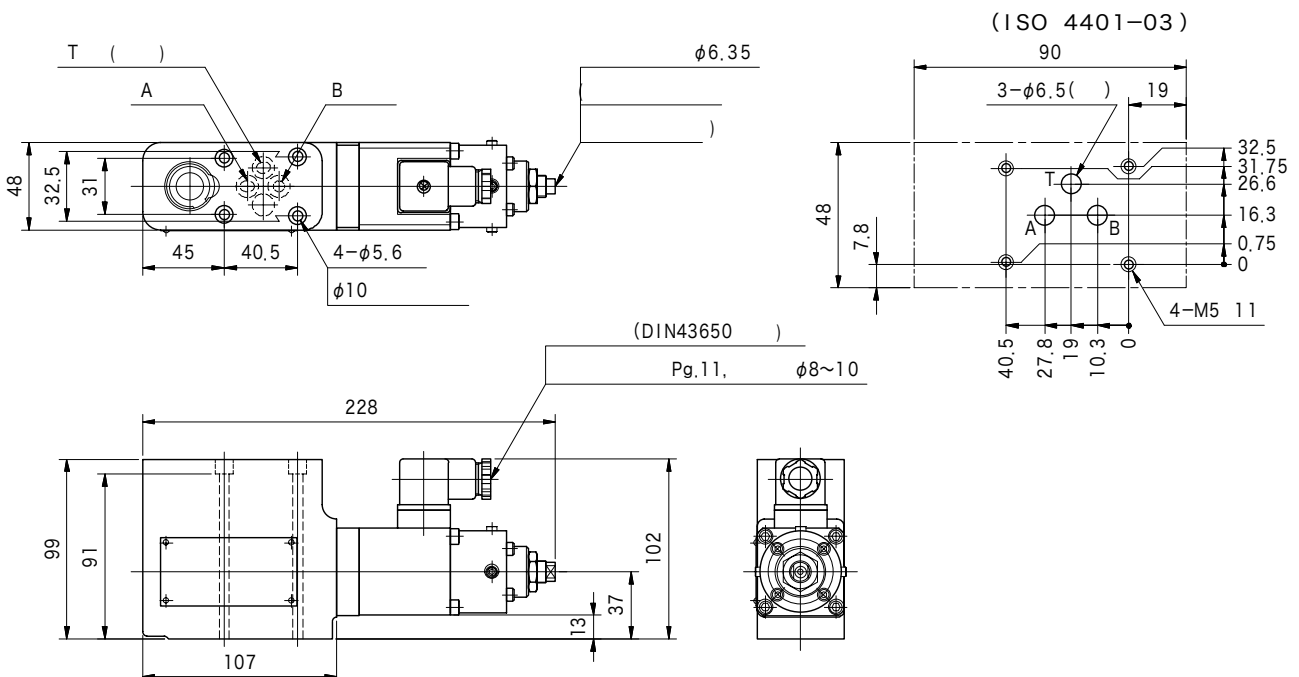
M5×100	4
--------	---

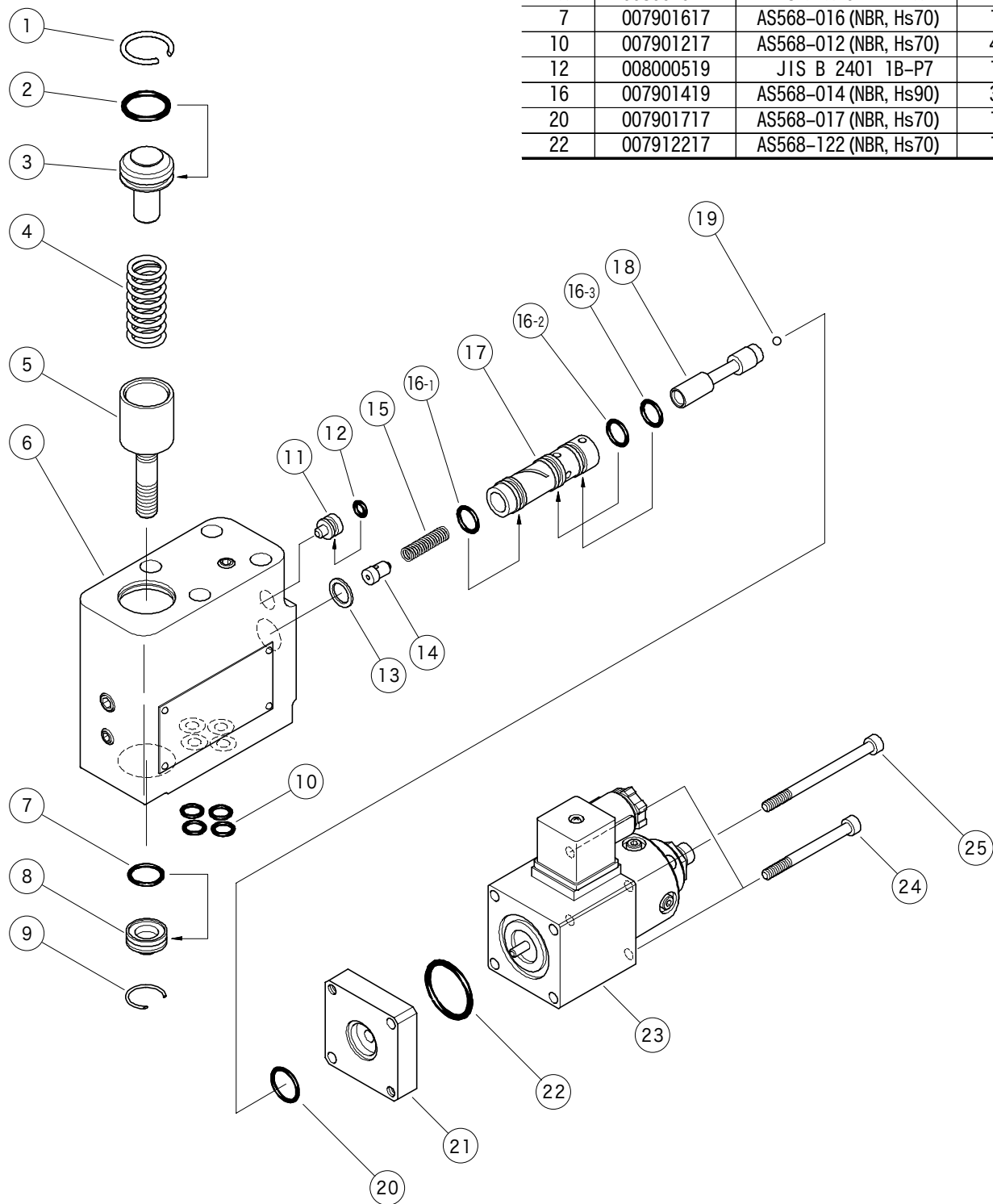
: 7~8 N·m

Q8page

J
14

比例電磁式制御弁・サーボ弁



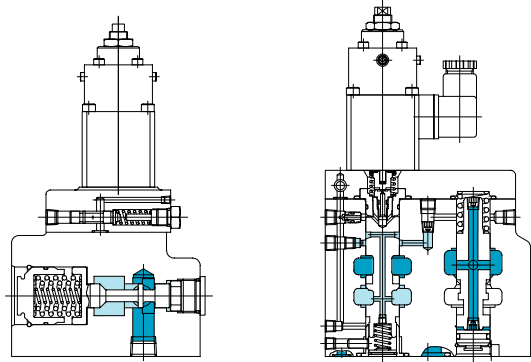


O

2	008001917	JIS B 2401 1A-P21	1
7	007901617	AS568-016 (NBR, Hs70)	1
10	007901217	AS568-012 (NBR, Hs70)	4
12	008000519	JIS B 2401 1B-P7	1
16	007901419	AS568-014 (NBR, Hs90)	3
20	007901717	AS568-017 (NBR, Hs70)	1
22	007912217	AS568-122 (NBR, Hs70)	1

EPF(R)G

Proportional flow control valves

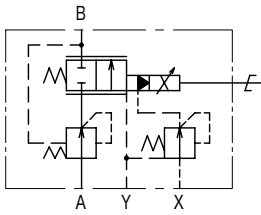


EPFRG

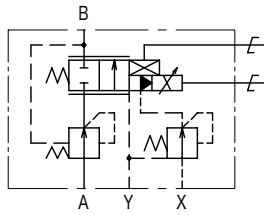
가

가

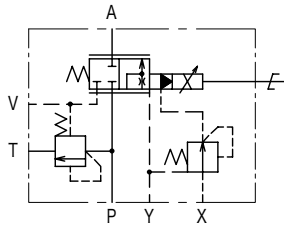
EPFG-**-*



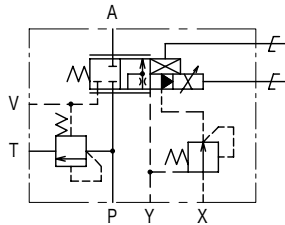
EPFG-**-F



EPFRG-**-S1



EPFRG-**-F-S1



()EPFRG-06/10 V ()가

J
16

比例電磁式制御弁・サーボ弁

EPF(R)G-03-130-(F)-(EX)-10-(S1)

- 1
- 2
- 3
- 4
- 5
- 6
- 7

1 (가)

EPFG:
EPFRG:

2 「 」

3 「 」

4 :
F:

5 :
EX:

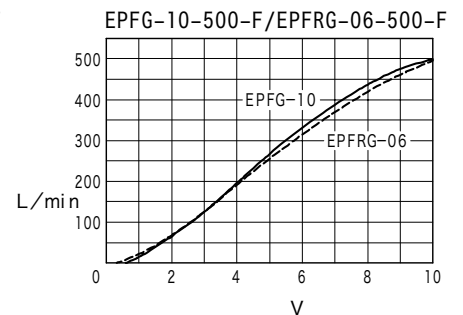
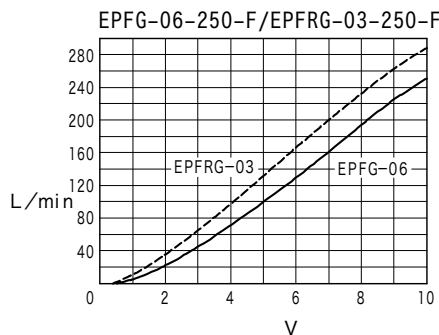
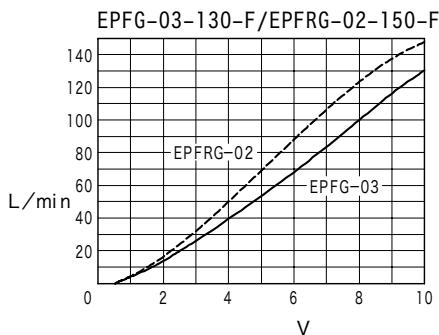
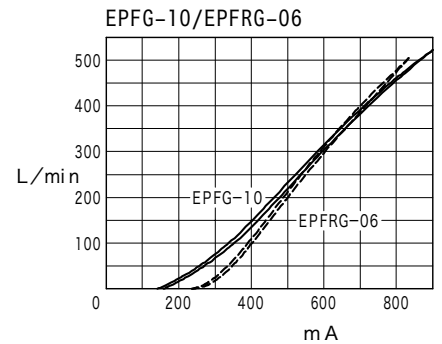
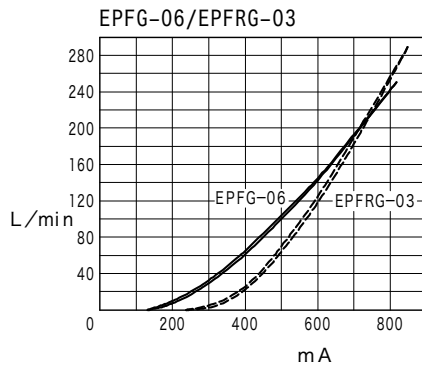
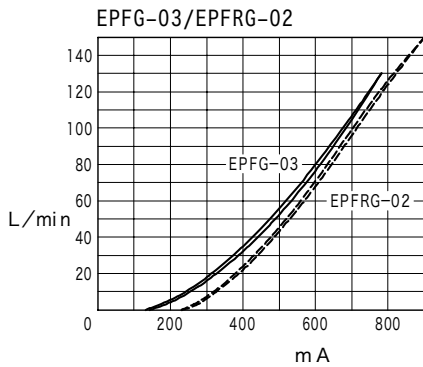
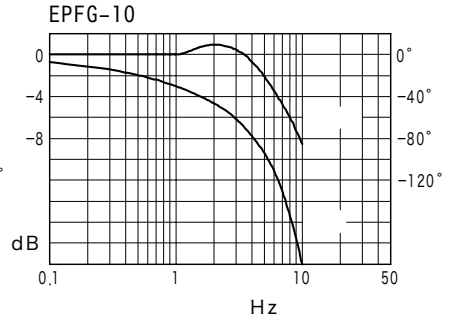
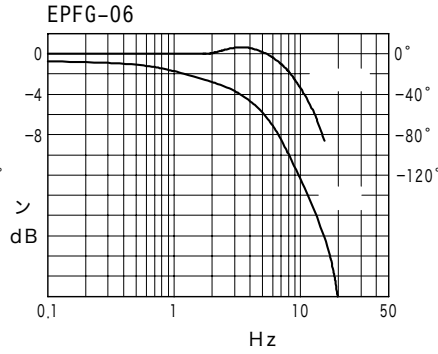
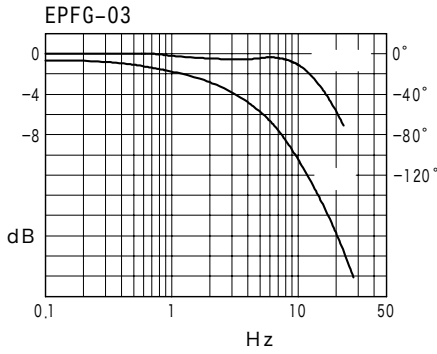
6 10: EPFRG-06
11: EPFRG-06

7 : EPFG
S1: EPFRG 가

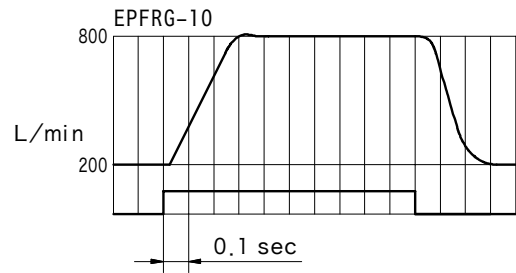
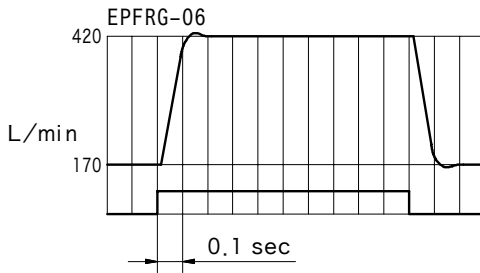
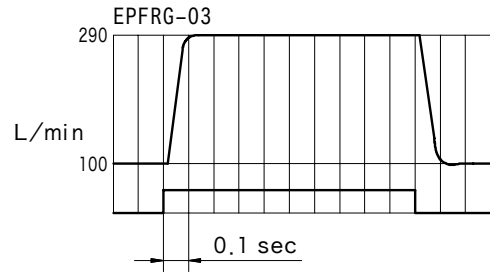
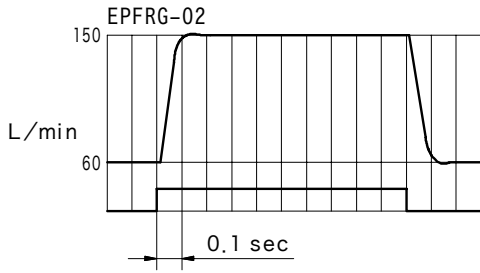
	EPFG							EPFRG								
	03			06				10	02			03		06	10	
MPa	21			17.5				21								
L/min	30	65	130	170	250	375	500	30	65	130	150	250	290	375	500	1000
L/min	0.7	1.0	1.3	1.7	2.5	4	5	1	1.5	2	2	3	4	5	6	10
L/min	30	65	130	170	250	375	500	30	65	130	150	250	290	375	500	1000
MPa	1.5~21							1.5~21								
L/min	1.5		1.5		2.5		1.5		2.0		2.5		3			
A	1							1								
Ω	14							15								
D I T H E R	Hz							100~110								
D I T H E R	mA rms							42								
	3 % (1)							3 % (1)								
	1 % (3)							1 % (3)								
	0.2 % (2)							0.2 % (2)								
	0.1 % (3)							0.1 % (3)								
	(5)							(4)								
kg	10		24		50		10		18		33		68			

- 1) P-X-14
- 2) P-Z-14
- 3)
- 4) EPFRG-10 600 l/min 2Mpa(20kgf/cm) 600L/min
- 5) 03 1Mpa(10kgf/cm) ,06 1.5Mpa(15kgf/cm) ,10 2Mpa(20kgf/cm)

(20 mm²/s(cSt))



()



J
18

比例電磁式制御弁・サーボ弁

- 3 90 가 (1.5%)
- 가

- Y () 0.3Mpa(2kgf/cm)
- 가 ()

	MPpa(kgf/cm)
03	1
06	1.5
10	2

(JIS B 1176 12.9)

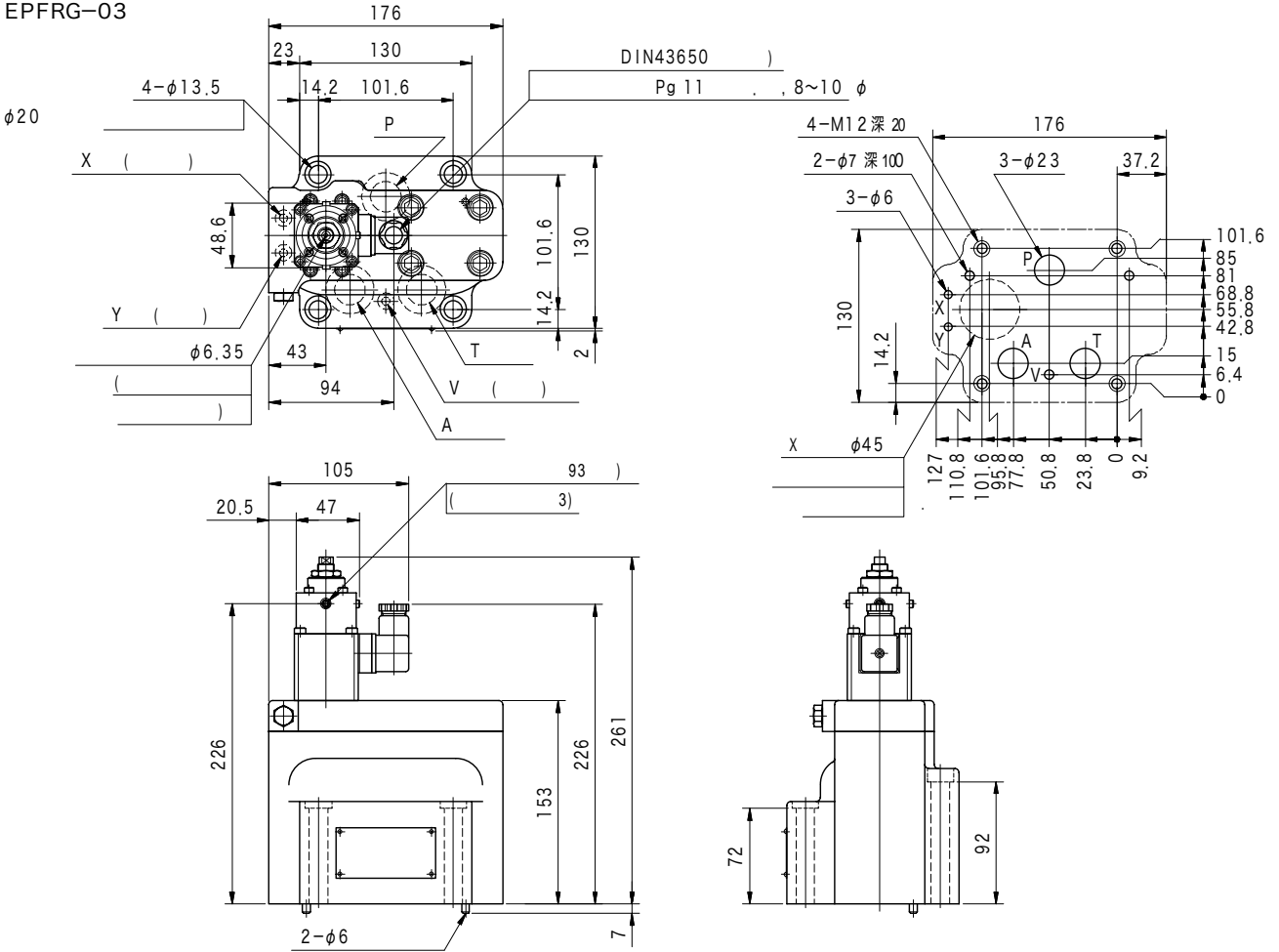
EPFG-03	M10×60	3/8-16UNC×63.5	4
EPFG-06	M16×105	5/8-11UNC×101.6	4
EPFG-10	M20×145	3/4-10UNC×146.1	4
EPFRG-02	M10×70	3/8-16UNC×69.8	4
EPFRG-03	M12×110	1/2-13UNC×114.3	2
	M12×90	1/2-13UNC×95.2	2
EPFRG-06	M20×150	—————	2
	M20×110	—————	2
EPFRG-10	M20×190	—————	2
	M20×130	—————	2

		(Rc(pt))
EPFG-03	EPFGM-03Y-20	3/4
	EPFGM-03Z-20	1
EPFG-06	EPFGM-06X-20	1
	EPFGM-06Y-20	1-1/4
EPFG-10	EPFGM-06Z-20	1-1/2
	TFGTM-10X-10	1-1/2
	TFGTM-10Y-10	2
EPFRG-02	D-FRGM-02-10	3/4
EPFRG-03	D-FRGM-03-10	1-1/4
EPFRG-06	D-FRGM-06-10	1-1/2

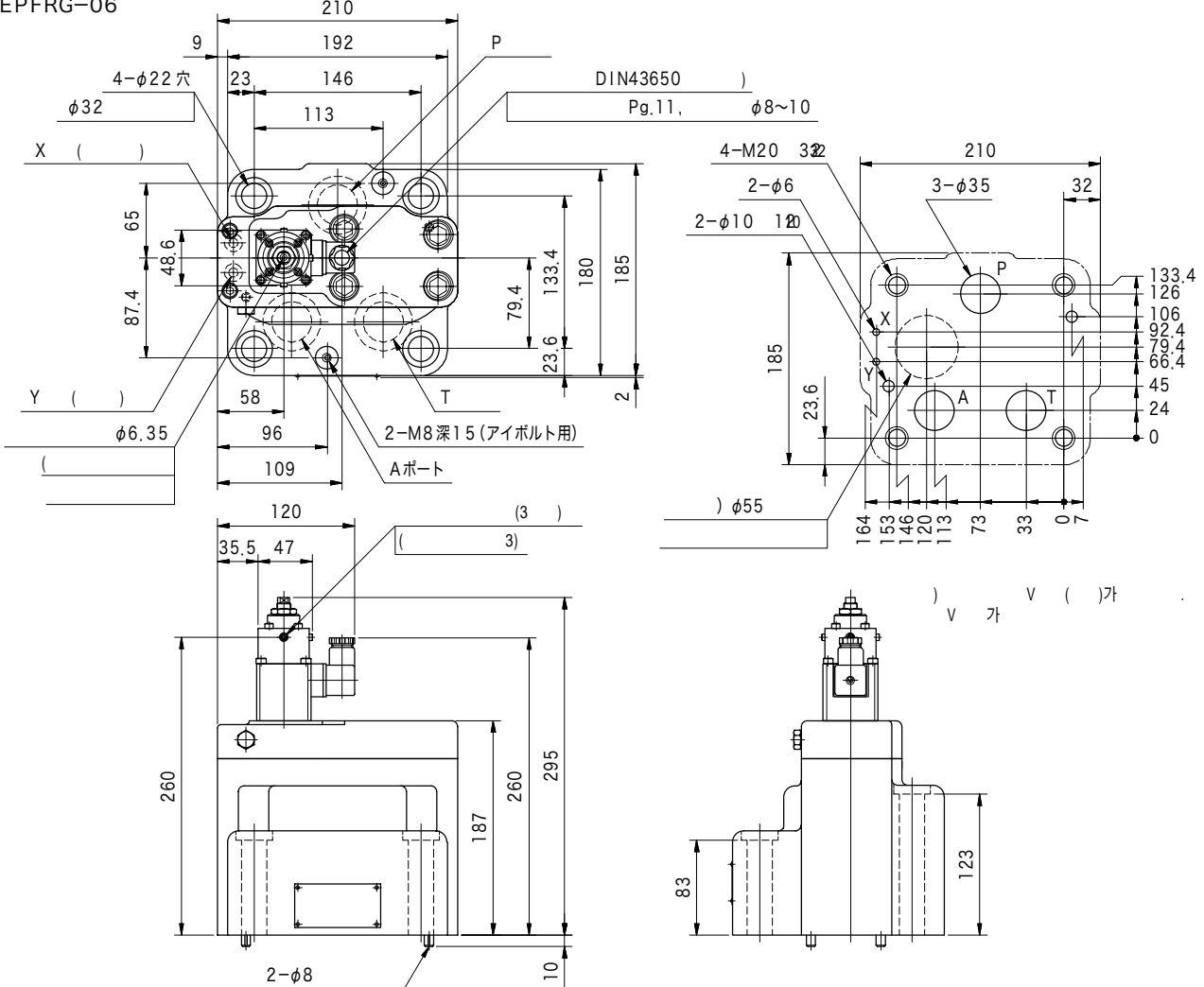
- EPFG-03, EPFRG-02 : 50~60 N·m
- EPFRG-03 : 75~81 N·m
- EPFG-06 : 90~110 N·m
- EPFRG-06, EPF(R)G-10 : 230~290 N·m

- 가
- ((
- Q9,Q10page

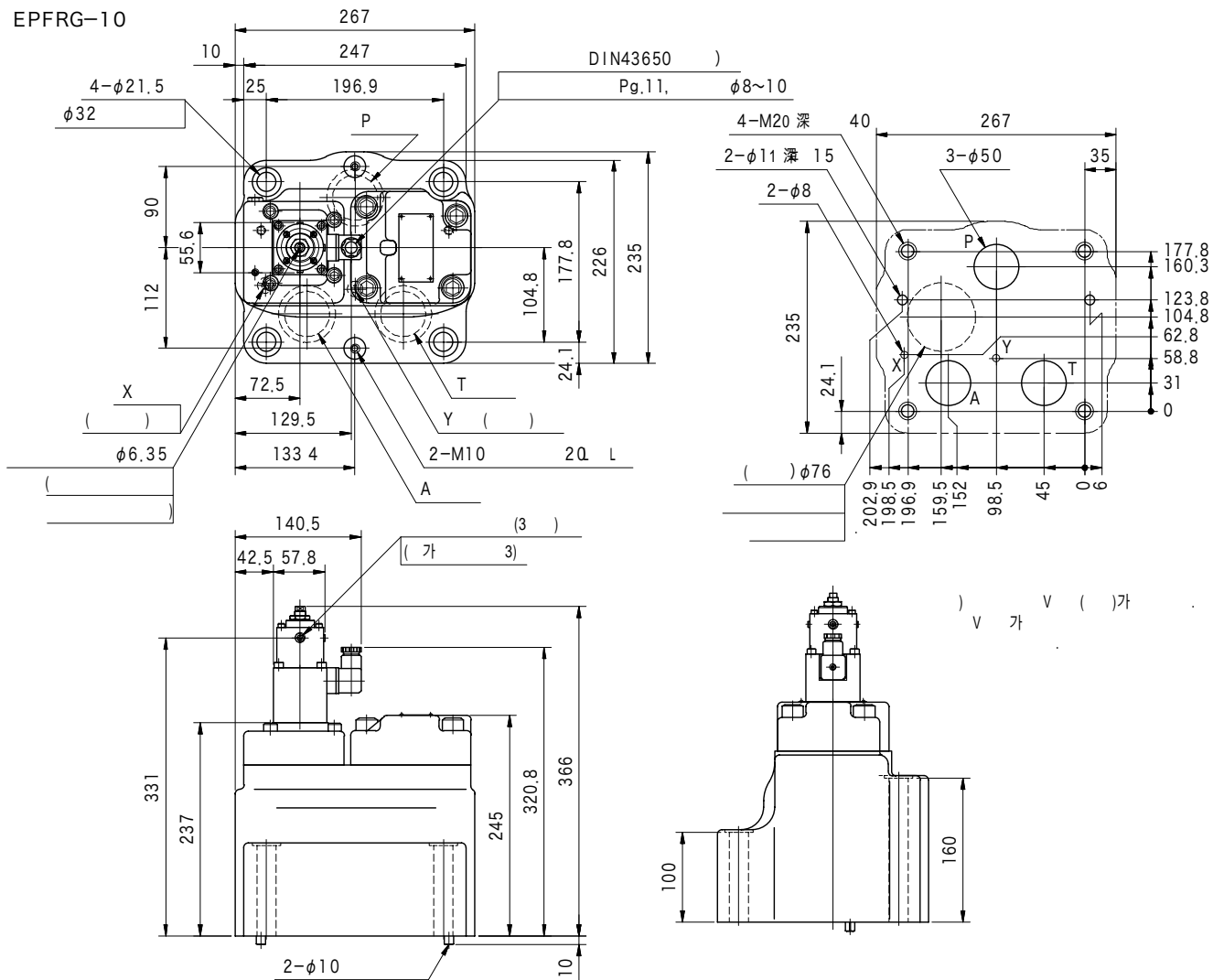
EPFRG-03



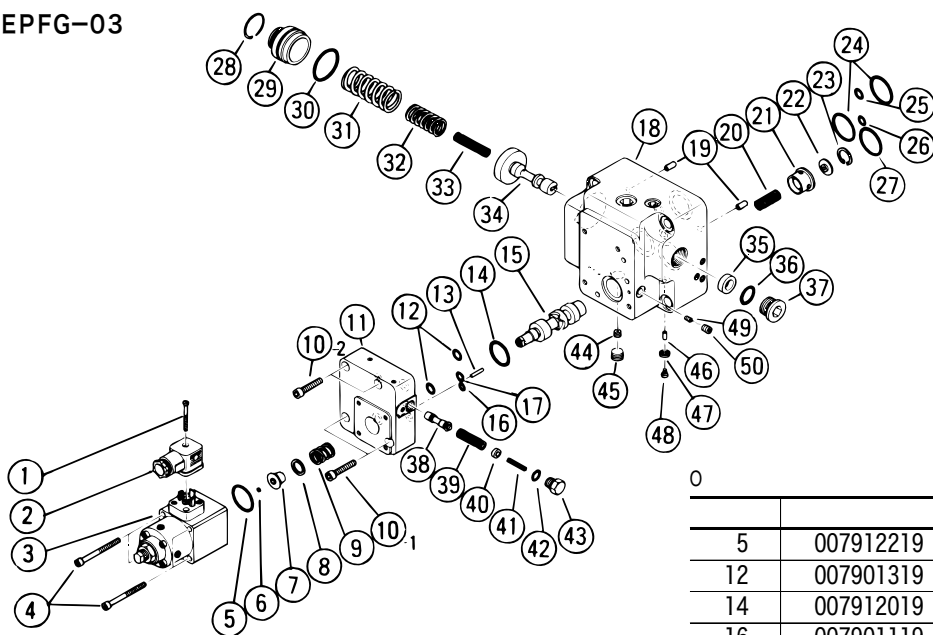
EPFRG-06



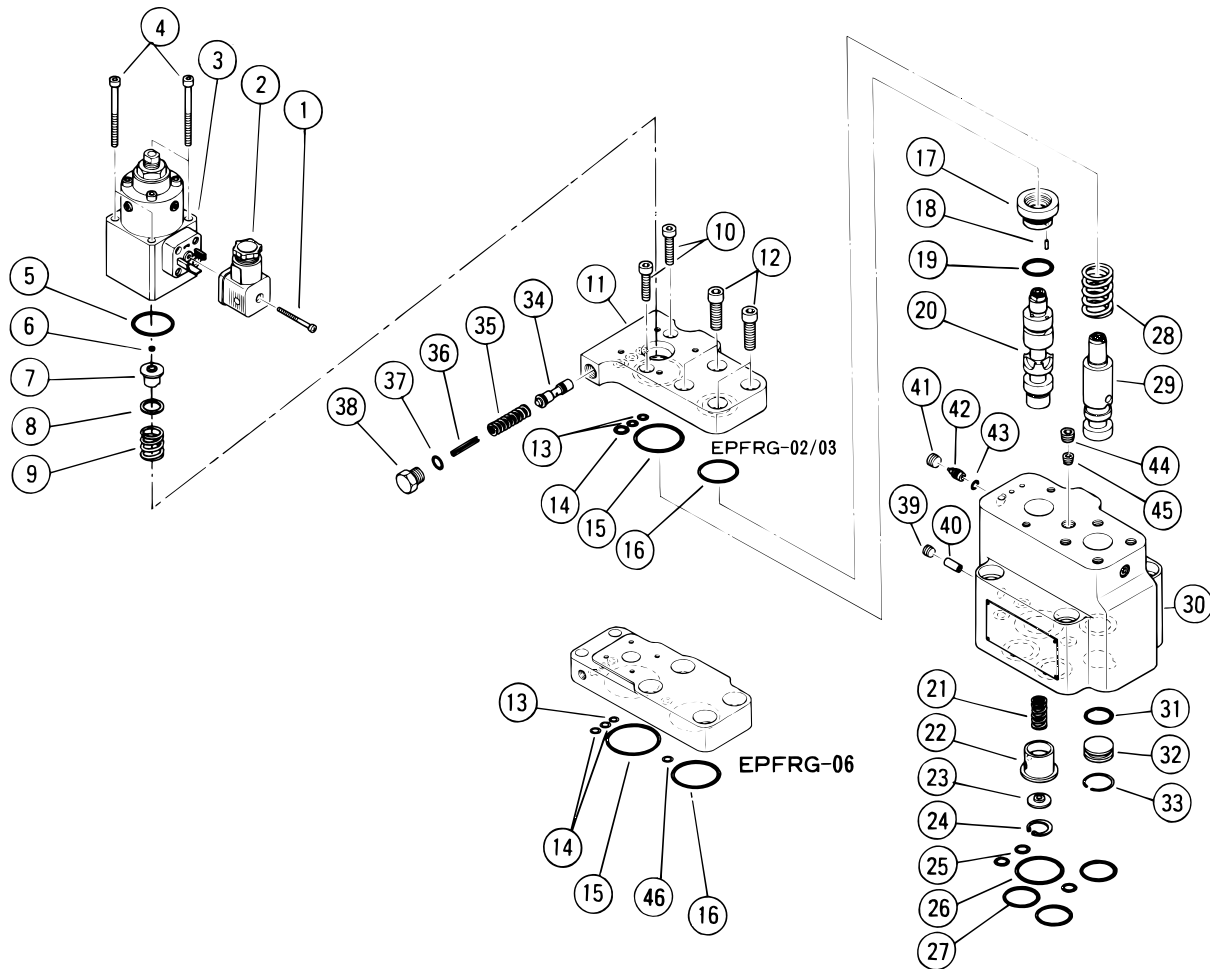
EPFRG-10



EPFG-03



5	007912219	AS568-122 (NBR, Hs90)	1
12	007901319	AS568-013 (NBR, Hs90)	2
14	007912019	AS568-120 (NBR, Hs90)	1
16	007901119	AS568-011 (NBR, Hs90)	2
17	007901219	AS568-012 (NBR, Hs90)	1
24	007921519	AS568-215 (NBR, Hs90)	2
25	007901319	AS568-013 (NBR, Hs90)	1
26	007901219	AS568-012 (NBR, Hs90)	1
27	007912319	AS568-123 (NBR, Hs90)	1
30	007902819	AS568-028 (NBR, Hs90)	1
36	007991019	AS568-910 (NBR, Hs90)	1
42	007901219	AS568-012 (NBR, Hs90)	1



0

EPFRG-02

5	007912219	AS568-122 (NBR, Hs90)	1
13	007901019	AS568-010 (NBR, Hs90)	2
14	007901119	AS568-011 (NBR, Hs90)	1
15	007912519	AS568-125 (NBR, Hs90)	1
16	007912019	AS568-120 (NBR, Hs90)	1
19	007901819	AS568-018 (NBR, Hs90)	1
25	007901219	AS568-012 (NBR, Hs90)	3
26	007912319	AS568-123 (NBR, Hs90)	1
27	007921319	AS568-213 (NBR, Hs90)	3
31	007911519	AS568-115 (NBR, Hs90)	1
37	007901219	AS568-012 (NBR, Hs90)	1
43	007900719	AS568-007 (NBR, Hs90)	1

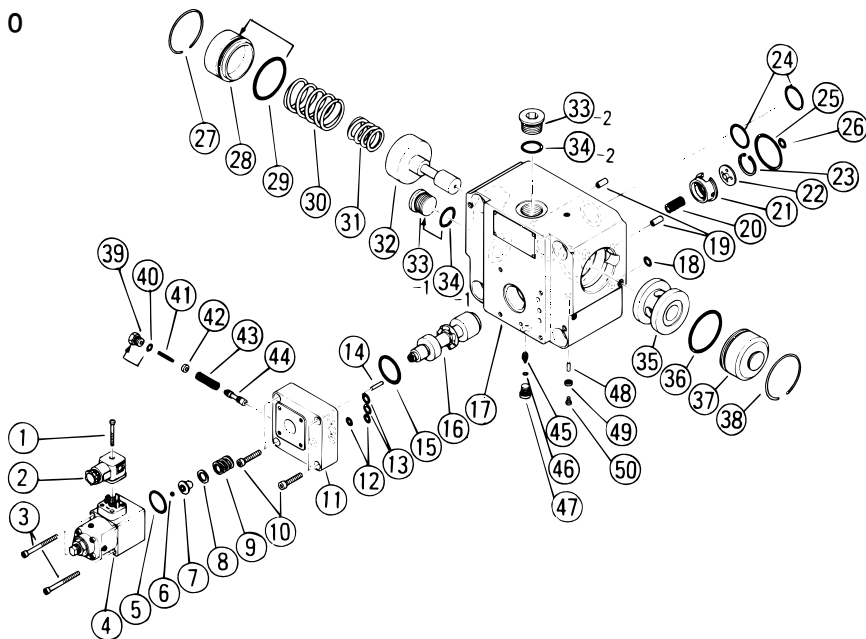
EPFRG-03

5	007912219	AS568-122 (NBR, Hs90)	1
13	007901019	AS568-010 (NBR, Hs90)	2
14	007901119	AS568-011 (NBR, Hs90)	1
15	007913119	AS568-131 (NBR, Hs90)	1
16	007912719	AS568-127 (NBR, Hs90)	1
19	007912119	AS568-121 (NBR, Hs90)	1
25	007901219	AS568-012 (NBR, Hs90)	3
26	007912919	AS568-129 (NBR, Hs90)	1
27	007921719	AS568-217 (NBR, Hs90)	3
31	007912119	AS568-121 (NBR, Hs90)	1
37	007901219	AS568-012 (NBR, Hs90)	1
43	007900719	AS568-007 (NBR, Hs90)	1

EPFRG-06

5	007912219	AS568-122 (NBR, Hs90)	1
13	007901119	AS568-011 (NBR, Hs90)	1
14	007901219	AS568-012 (NBR, Hs90)	2
15	007913919	AS568-139 (NBR, Hs90)	1
16	007922819	AS568-228 (NBR, Hs90)	1
19	007912919	AS568-129 (NBR, Hs90)	1
25	007911119	AS568-111 (NBR, Hs90)	2
26	008050619	JIS B 2401 1B-G50	1
27	007922419	AS568-224 (NBR, Hs90)	3
31	007912919	AS568-129 (NBR, Hs90)	1
37	007901219	AS568-012 (NBR, Hs90)	1
46	007901219	AS568-012 (NBR, Hs90)	1

EPFG-06/10



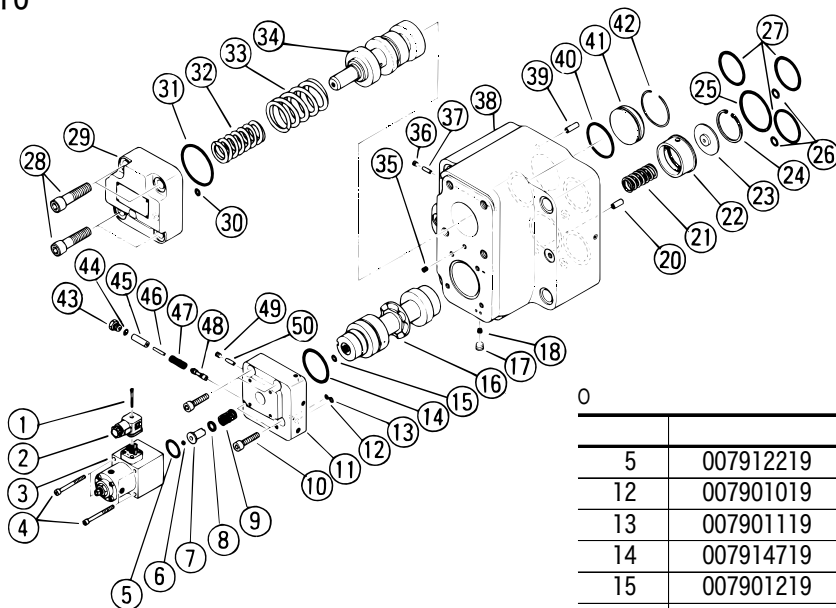
0
EPFG-06

5	007912219	AS568-122 (NBR, Hs90)	1
12	007901219	AS568-012 (NBR, Hs90)	2
13	007901319	AS568-013 (NBR, Hs90)	2
15	007912619	AS568-126 (NBR, Hs90)	1
18	007901319	AS568-013 (NBR, Hs90)	1
24	007921719	AS568-217 (NBR, Hs90)	2
25	007913319	AS568-133 (NBR, Hs90)	1
26	007901319	AS568-013 (NBR, Hs90)	1
29	007922619	AS568-226 (NBR, Hs90)	1
34	007991219	AS568-912 (NBR, Hs90)	2
36	007922719	AS568-227 (NBR, Hs90)	1
40	007901219	AS568-012 (NBR, Hs90)	1
46	007900717	AS568-007 (NBR, Hs70)	1

EPFG-10

5	007912219	AS568-122 (NBR, Hs90)	1
12	007901219	AS568-012 (NBR, Hs90)	2
13	007901319	AS568-013 (NBR, Hs90)	2
15	007913719	AS568-137 (NBR, Hs90)	1
18	007911219	AS568-112 (NBR, Hs90)	1
24	007922419	AS568-224 (NBR, Hs90)	2
25	007914119	AS568-141 (NBR, Hs90)	1
26	007911219	AS568-112 (NBR, Hs90)	1
29	007923219	AS568-232 (NBR, Hs90)	1
34	007921819	AS568-218 (NBR, Hs90)	2
36	007923419	AS568-234 (NBR, Hs90)	1
40	007901219	AS568-012 (NBR, Hs90)	1

EPFRG-10

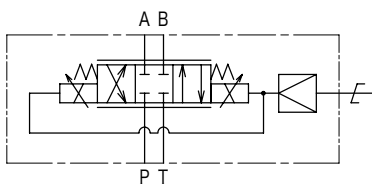
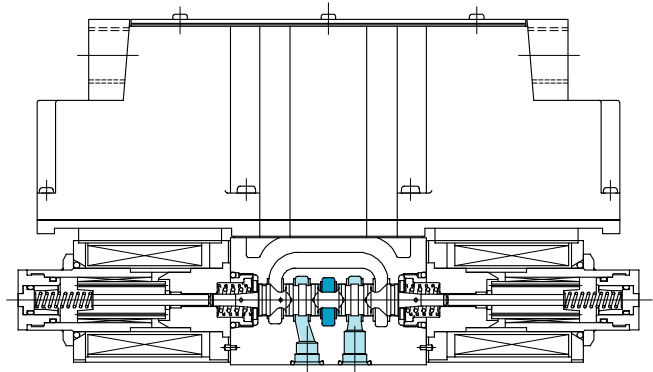


0

5	007912219	AS568-122 (NBR, Hs90)	1
12	007901019	AS568-010 (NBR, Hs90)	1
13	007901119	AS568-011 (NBR, Hs90)	1
14	007914719	AS568-147 (NBR, Hs90)	1
15	007901219	AS568-012 (NBR, Hs90)	1
25	007914919	AS568-149 (NBR, Hs90)	1
26	007911219	AS568-112 (NBR, Hs90)	2
27	007922819	AS568-228 (NBR, Hs90)	3
30	007901319	AS568-013 (NBR, Hs90)	1
31	007923219	AS568-232 (NBR, Hs90)	1
40	007922819	AS568-228 (NBR, Hs90)	1
44	007901219	AS568-012 (NBR, Hs90)	1

EPDG1-3

Proportional directional and flow control valves (direct operated type)



2, 3

EPDG1-3-33C-20-(DA)-21

1 2 3 4 5 6 7 8

- 1
- 2 3: ISO 4401-03
- 3 2:2 33:33
- 4 C: (3)
- 5 (P→A/B =0.7 MPa(7kgf/cm)
- 6 10:10L/min 20:20L/min
- 7
- 8

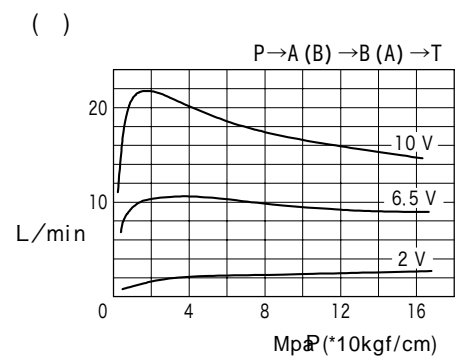
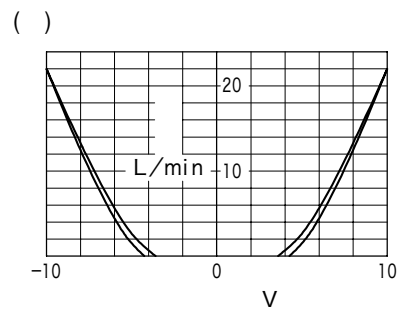
A1: ()
 D: DIN
 7 DIN
 A:
 T: (3 2)
 8

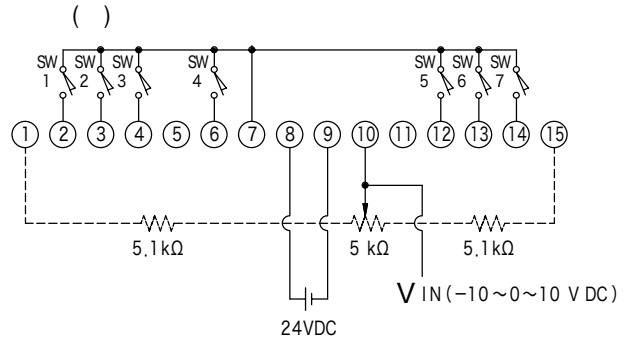
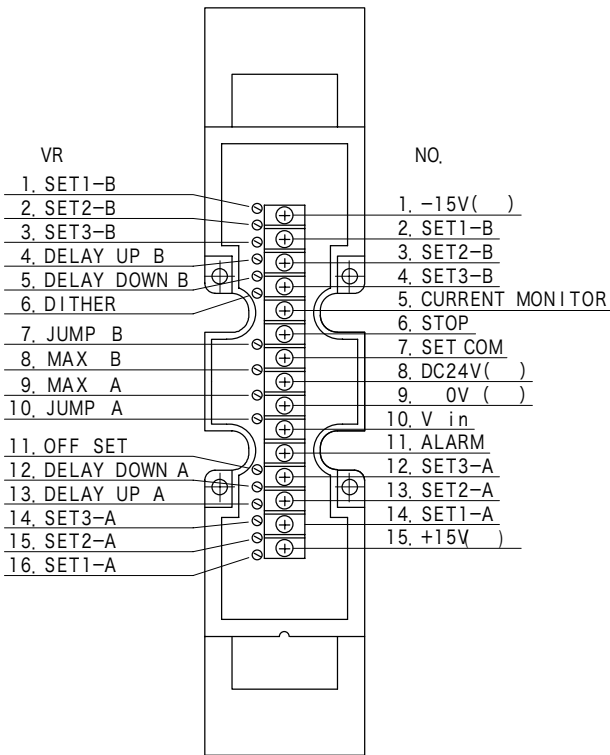
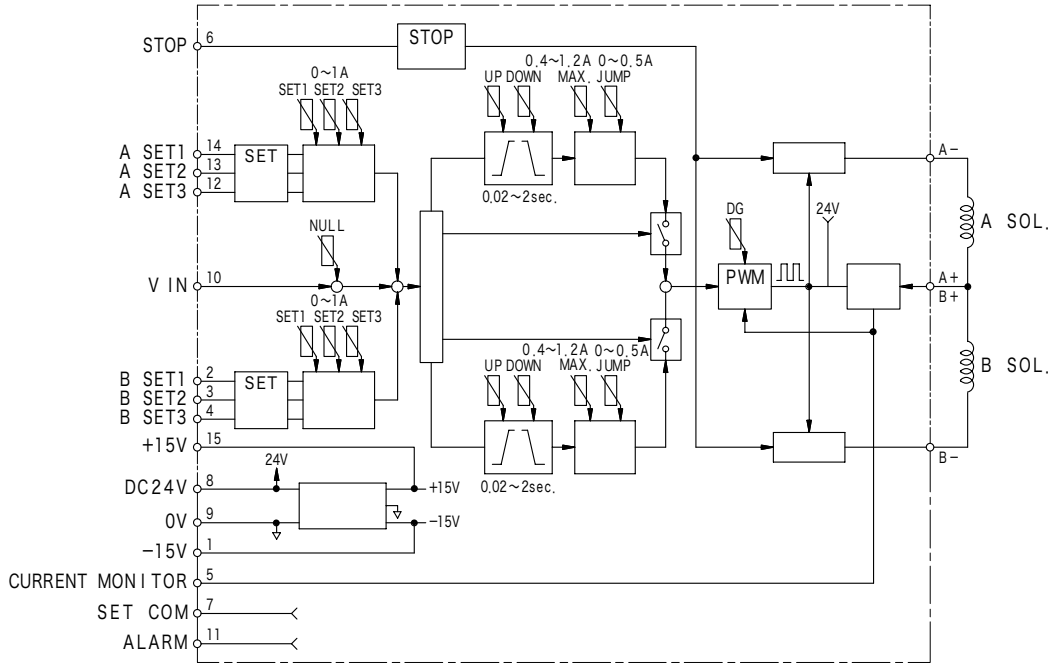
EPDG1-3

		EPDG1-3	
	MPa	21	
T	MPa	14	
		10	20
	L/min(1)	0.5	1
	L/min(1)	10	20
	A	1	
	Ω	13 (20 °C)	
D I T H E R	Hz	100~110	
D I T H E R	mA (p-p)	200	
		7 % (2)	
		2 % (2)	
	kg	: 2.4	
		: 0.5	

1) P→A/B =0.7 MPa(7kgf/cm)
 2)

(20 mm²/sのとき)





- SW1 ON SET1-B VR
- SW2 ON SET2-B VR
- SW3 ON SET3-B VR
- SW4 ON 가
- SW5 ON SET3-A VR
- SW6 ON SET2-A VR
- SW7 ON SET1-A VR

V IN

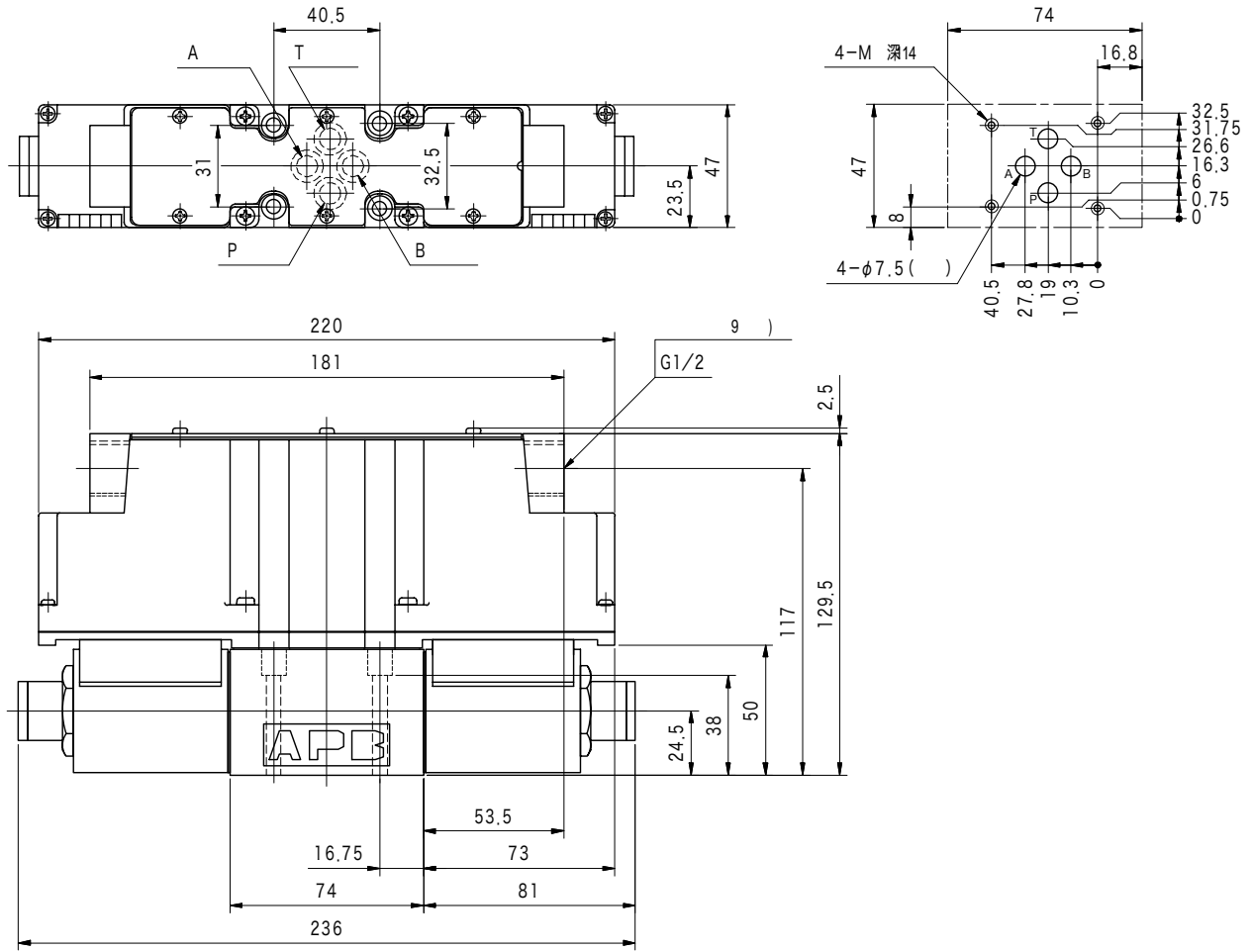
● T	
T ()	가
	0.035Mpa(0.35kgf/cm)
(JIS B 1176 12.9)	
M5×50	4
●	
●	
●	7~8 N·m

	Rc
DGMS-3-1E-10-T-JA-J	3/8
DGVM-3-10-T-JA-J	

●
●
●
Q8page

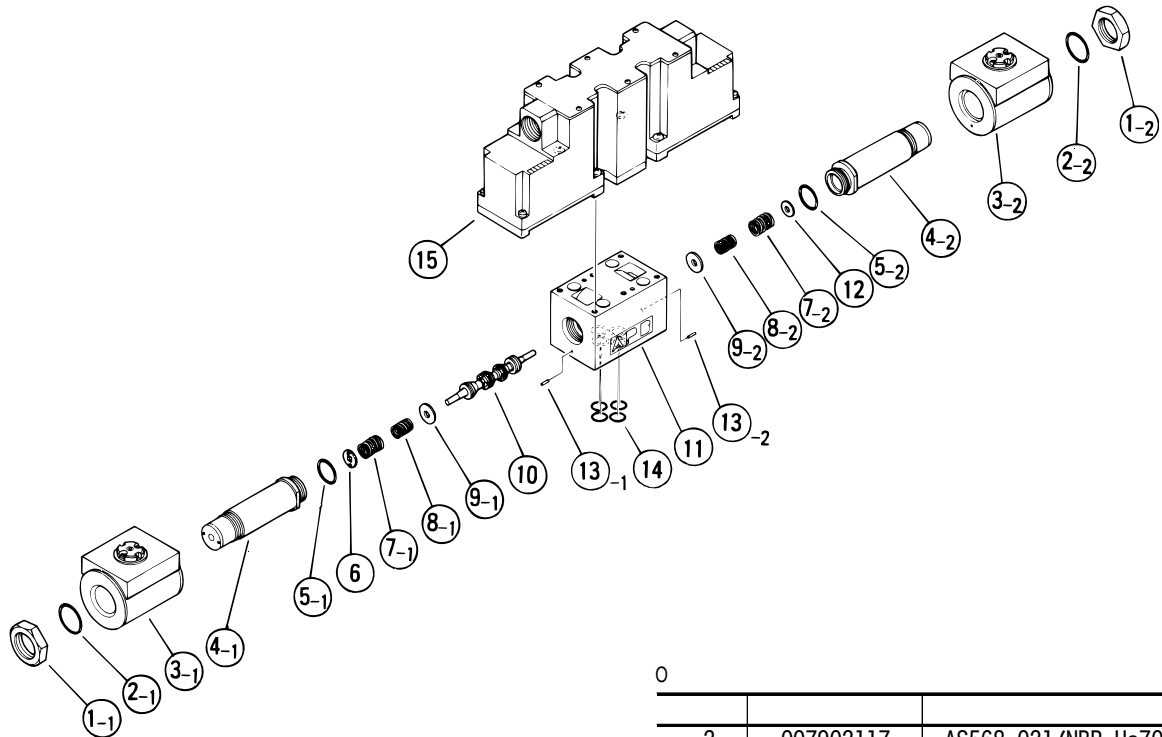
A1

(ISO 4401-03)

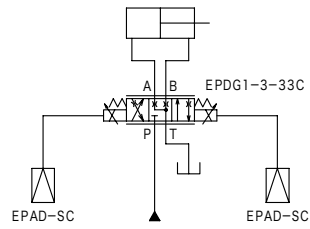
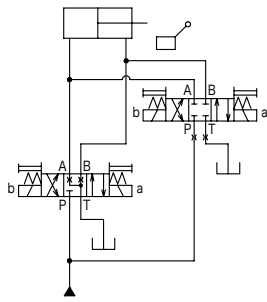


J
27

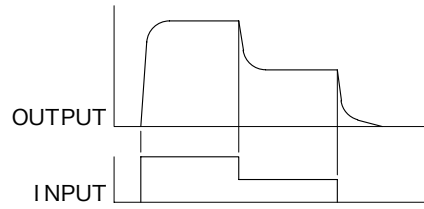
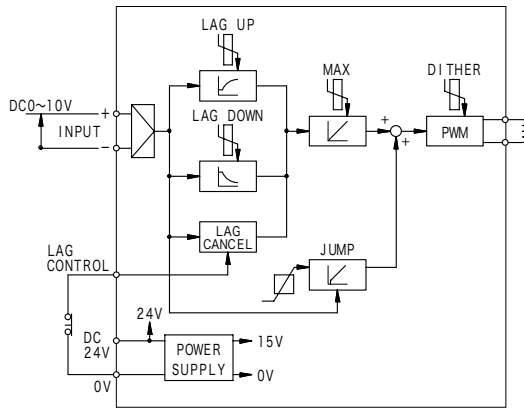
比例電磁式制御弁・サーボ弁



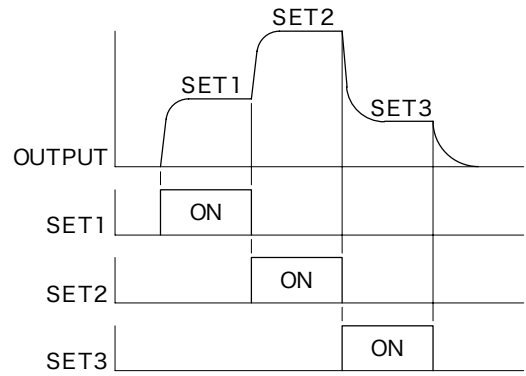
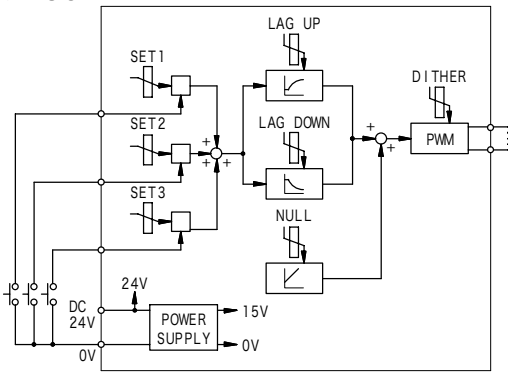
0			
2	007902117	AS568-021 (NBR, Hs70)	2
5	007911429	AS568-114 (FKM, Hs90)	2
14	007901219	AS568-012 (NBR, Hs90)	4



● EPAD-A(L)

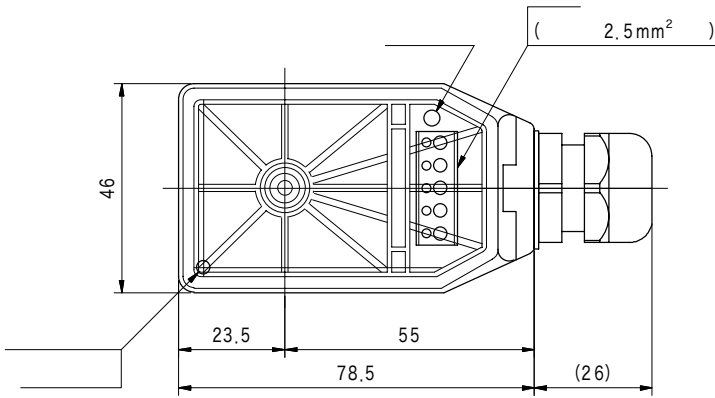


● EPAD-SC

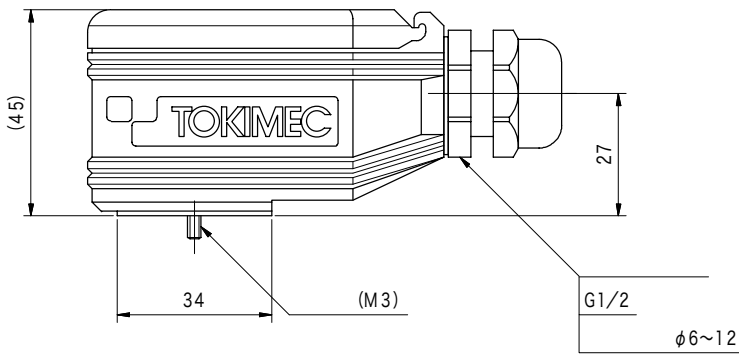
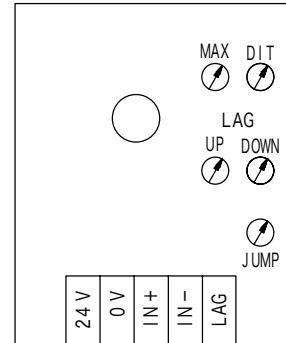


2.5mm²

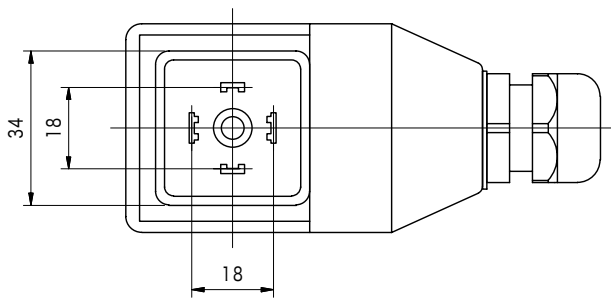
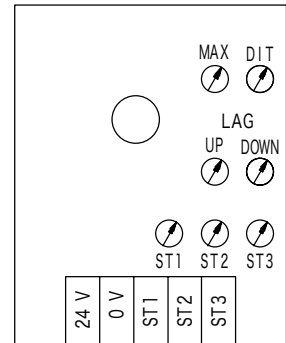
MAX..... (10V)
NULL, JUMP.....
, LAG ,
DITHER..... 160 Hz



EPAD-A(L)-***-12



EPAD-SC-***-12



JDINDIN

가

J
30

比例電磁式制御弁・サーボ弁

EP

P-X/Z

EP series proportional valve controllers



P-Z-(J)-(W)-14

- 1 2 3 4 5

1 EP

2

X: open

Z: (LVDT) closed

3

:

J:

4

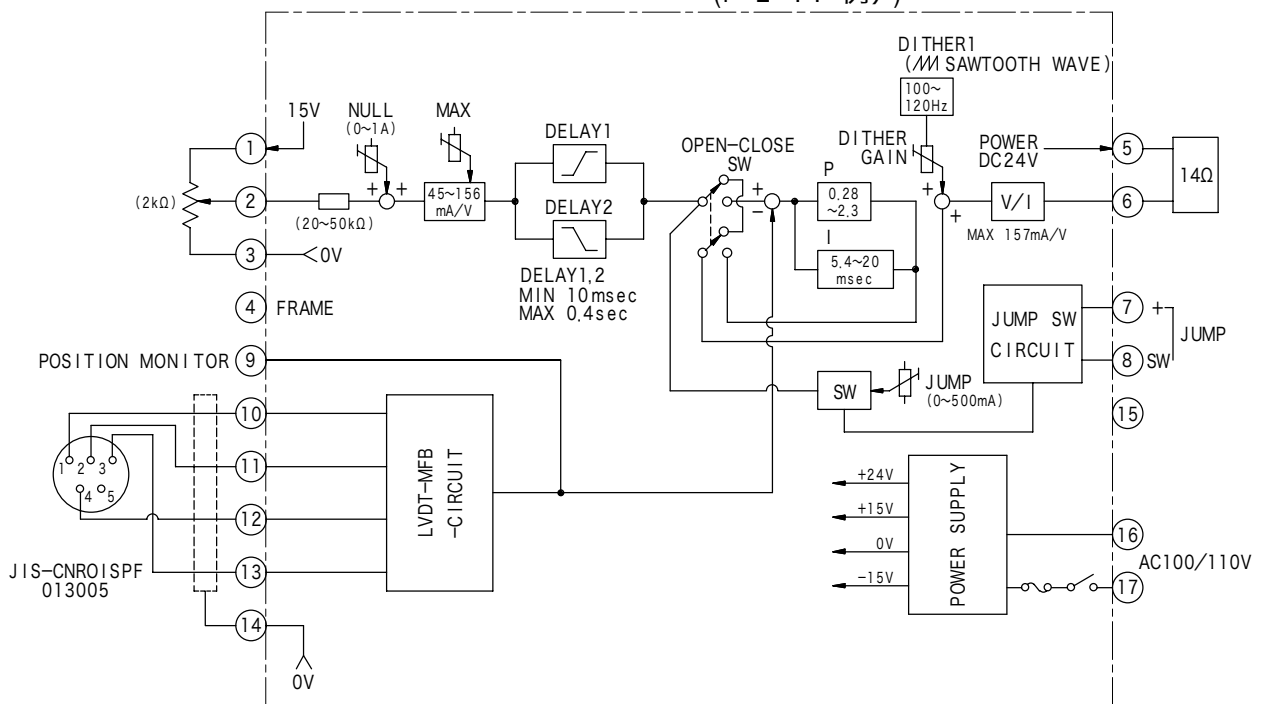
:

W:

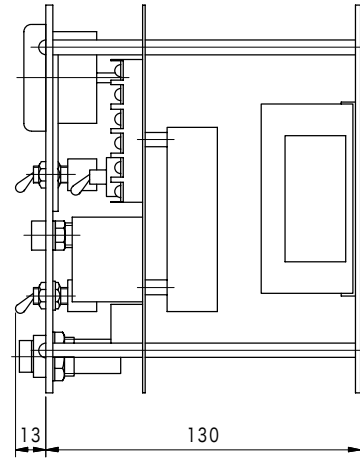
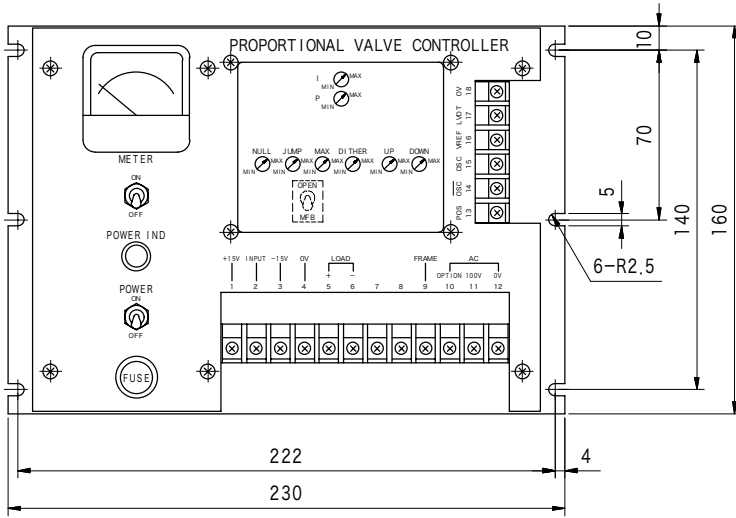
5

	AC100/110 V 50/60 Hz
	45 VA
	0~10 V
	24 kΩ (入力10 V, 出力1 A時)
	0~1 A
	14~19 Ω
D I T H E R	100~120 Hz
D I T H E R	0~400 mA (P-P)
	1 %
	0~50 °C
	-10~+75 °C
	30~90 %

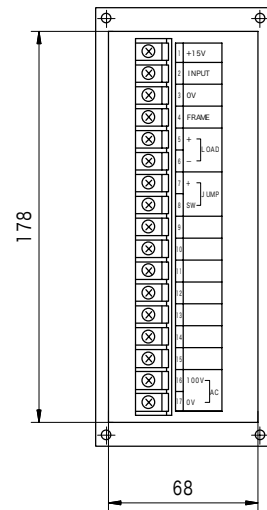
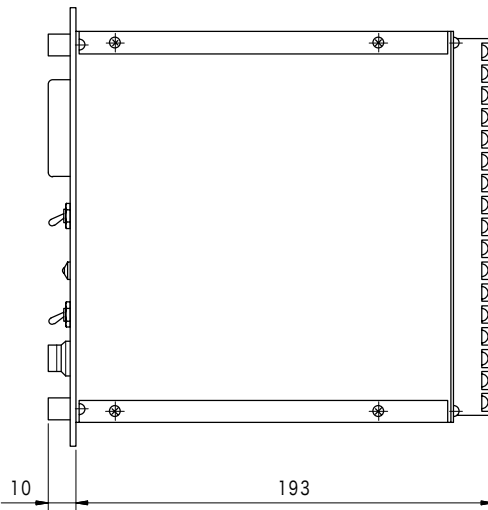
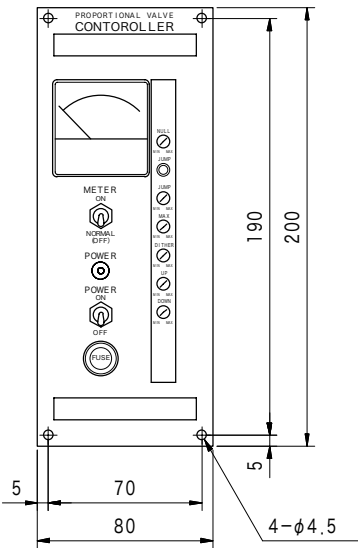
(P-Z-14 例)



P-Z-(J)-W-14



P-X-(J)-14/P-Z-(J)-14



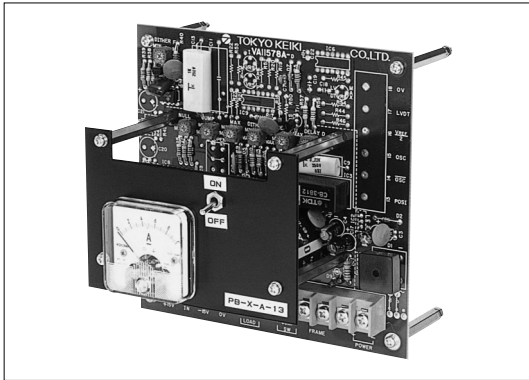
J
32

比例電磁式制御弁・サーボ弁

EP

EP series proportional valve controllers (PCB type)

PB-X/Z



PB-X-(J)-(A)-14

1 2 3 4 5

1 EP

2

X: open

z: (LVDT) closed

3

:

J:

4

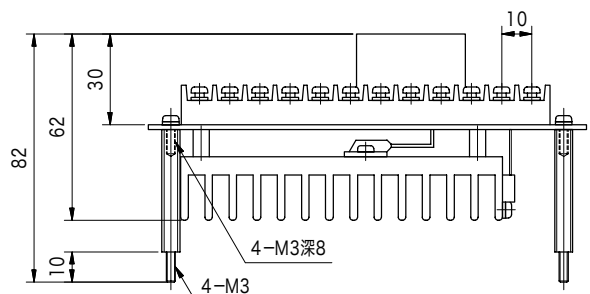
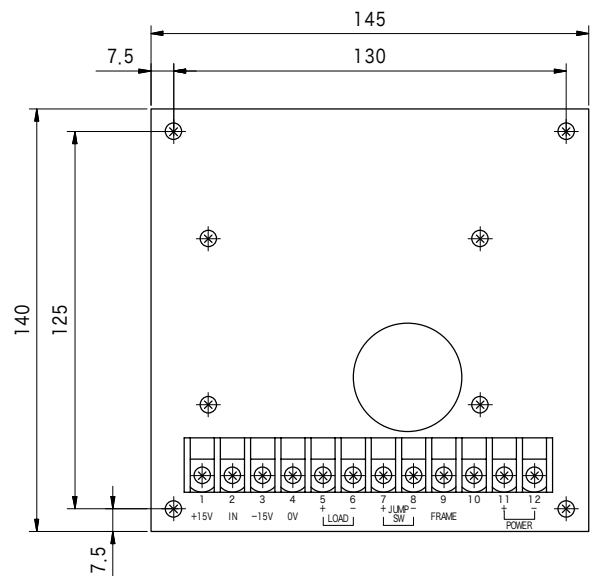
:

A:

5

	DC24 V±5 % 1.1 A
	DC0~10 V
	24 kΩ (10 V, 1 A)
	0~1 A
	14~19 Ω
D I T H E R	0~400 mA (p-p)
D I T H E R	100~120 Hz
	0~50 °C

PB-X-(J)-14/PB-Z-(J)-14



J
33

比例電磁式制御弁・サーボ弁

EP

EPA

EP series proportional valve controllers (multi-channel type)



- 2 1 2
- 가
- 3 3
- 6S3, 6D3
- OPEN
- feed back
- 가

EPA-6X3-A-10

1 2 3 4 5 6

- 1 EP
- 2 6:2 / 1 × 3
- 3

	open	closed (LVDT)
X		—
S	2,3	1
D	3	1,2

- 4 3:3
- 5

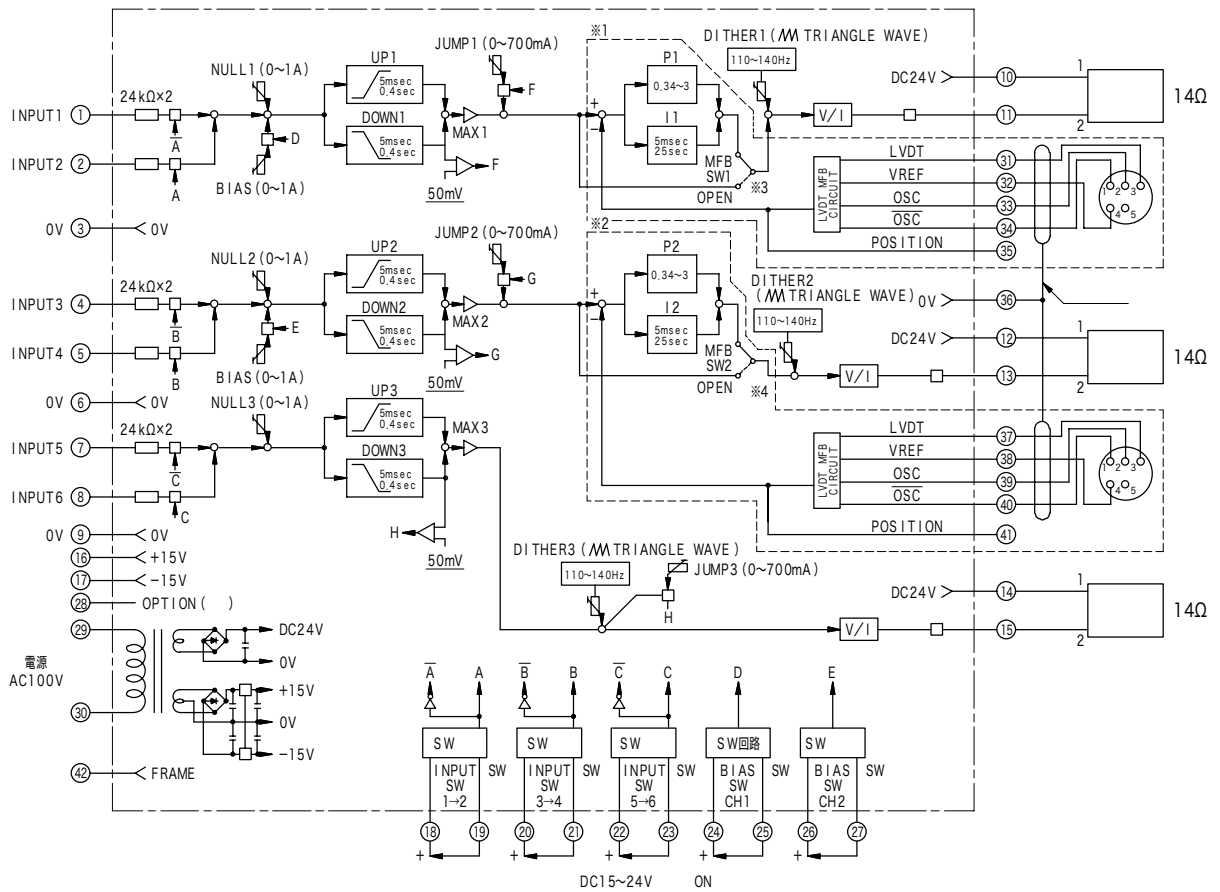
	1			1		
	1	2	3	1	2	3
A	○	○	○	—	—	—
B	○	—	—	○	○	○
C	—	○	—	○	—	○
D	—	—	○	○	○	—

- 6

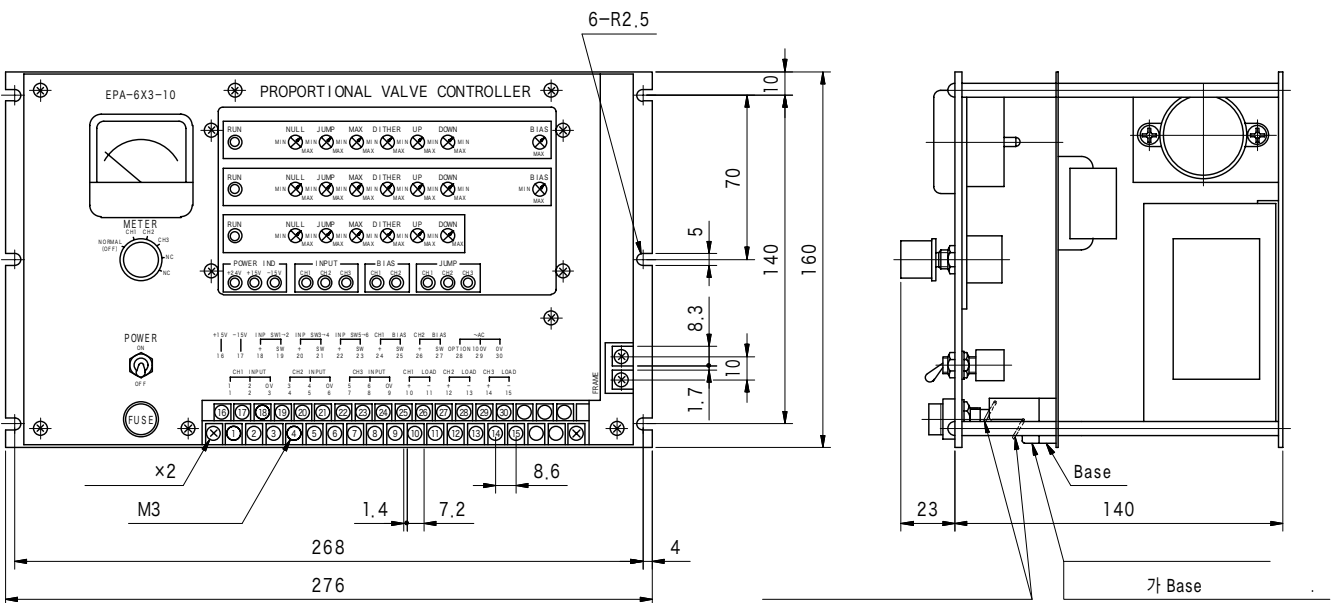
	AC100/110 V 50/60 Hz
	80 VA
	DC0~10 V
	22 kΩ
	0~1 A/1ch
	14 Ω (at20 °C)
D I T H E R	10~140 Hz
D I T H E R	チャンネル1: 0~400 mAp-p()
	チャンネル2, 3: 0~300 mAp-p()
	1 % (VS)
	0 ~50 °C
	-10~+75 °C
	30~90 %
	4 kg

J
34

比例電磁式制御弁・サーボ弁



	※1	※2	SW1	SW2
EPA-6X3-(*)-10	無	無	※3	無
EPA-6S3-(*)-10				※4
EPA-6D3-(*)-10				



) EPA-6X3-(*)-10
 EPA-6S3-(*)-10, EPA-6D3-(*)-10
 ()

EC-4S

Signal controllers



EC-4S-100-12

1 2 3

1 4

2

100: 5

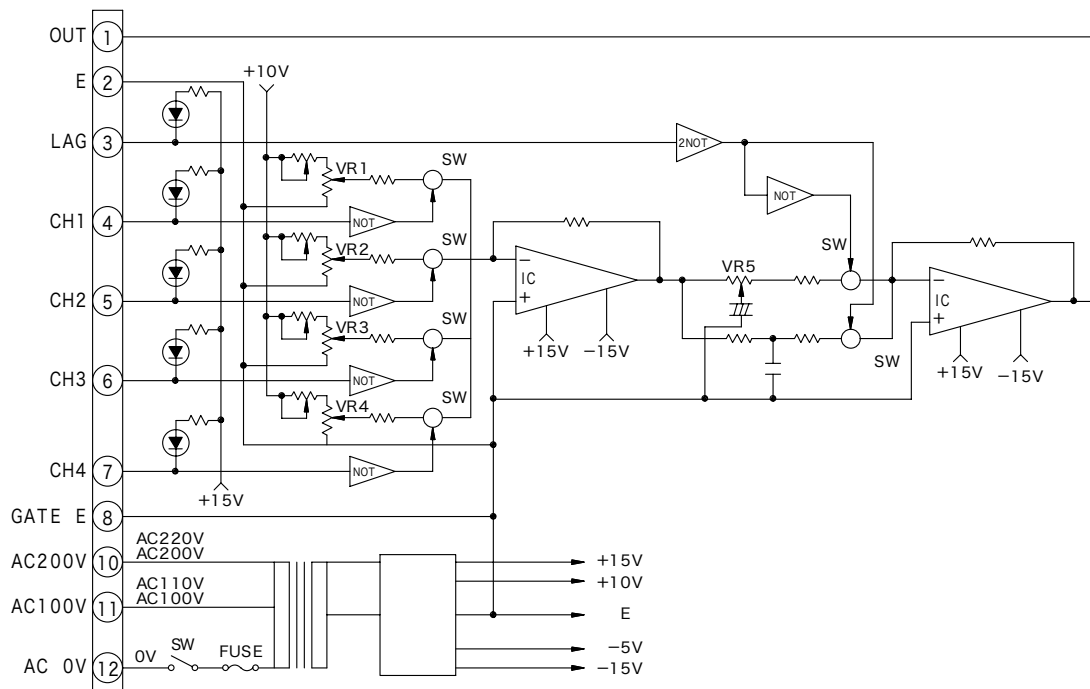
22: 1

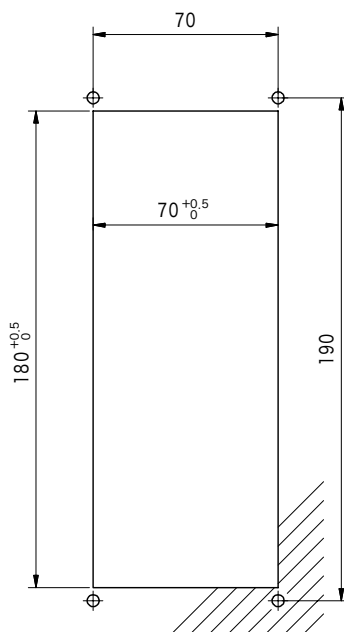
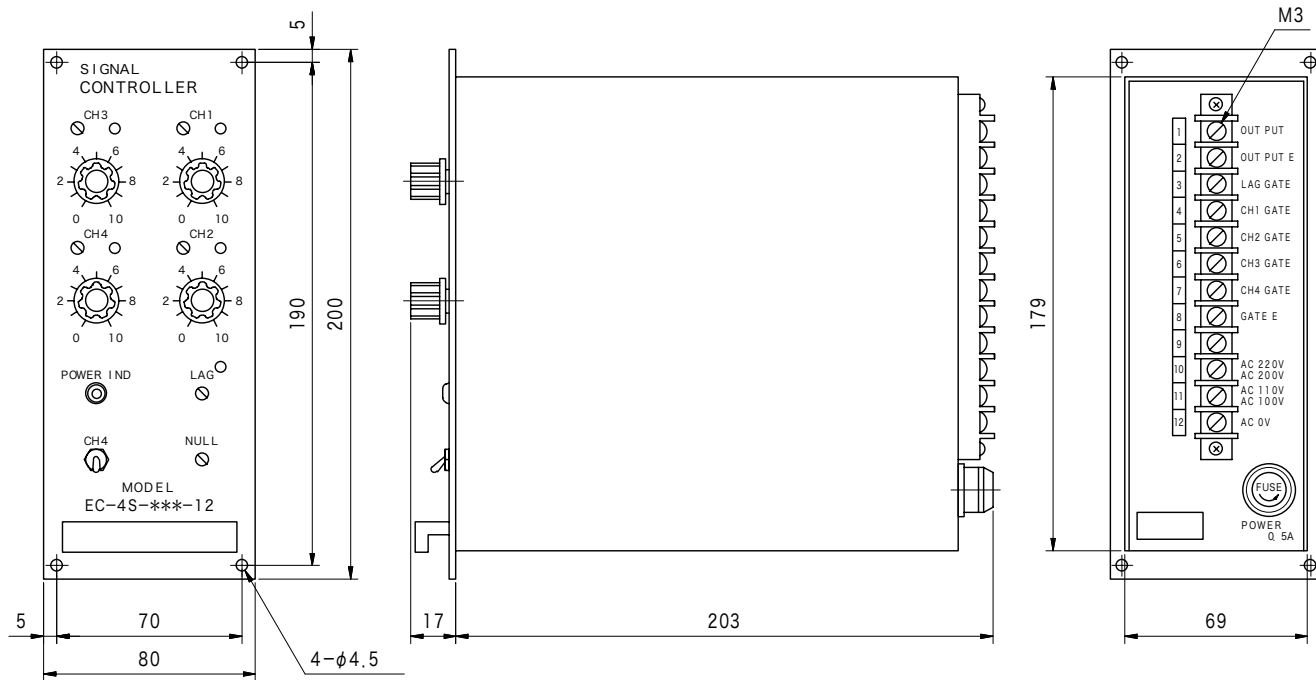
3

J
36

比例電磁式制御弁・サーボ弁

	AC100/110, AC200/220 V 50/60 Hz 20 VA
	DC24 V 20 mA
	DC0~+10 V
	0.5 % (FULL SCALE)
NULL	±2 % (FULL SCALE)
LAG	0.5~5 —EC-4S-100-12 0.1~1 —EC-4S-22-12
drift	0.5 % (FULL SCALE)
drift	1.0 % (FULL SCALE)
	0~50 °C
	-10~80 °C
	25~95 %
	2.5kg

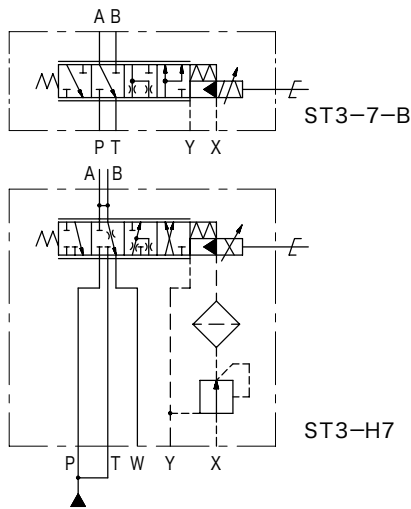
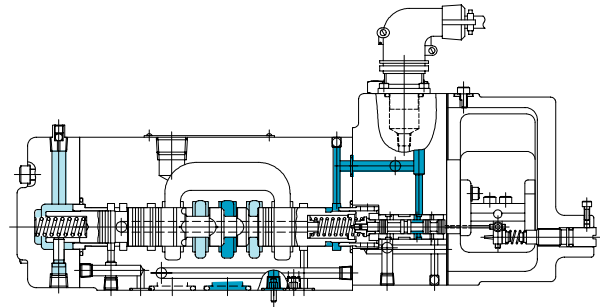
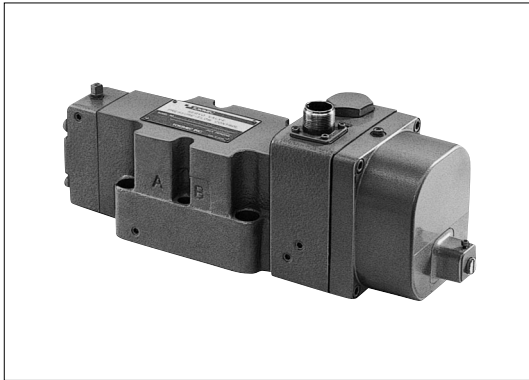




3

3way servo valves

ST3



ST3-7-B-350-10-12

1 2 3 4 5 6

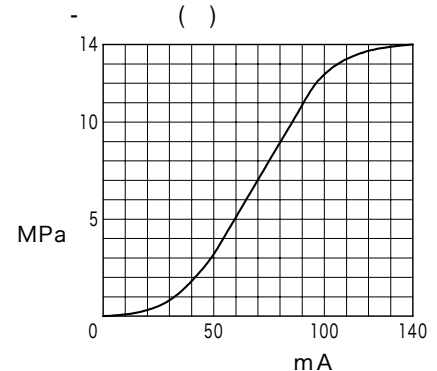
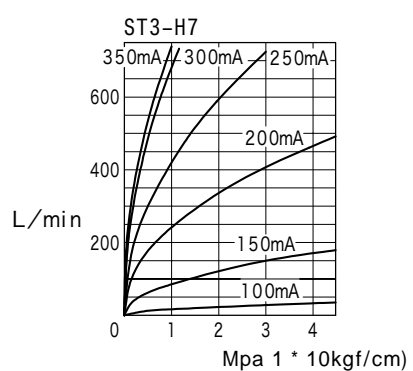
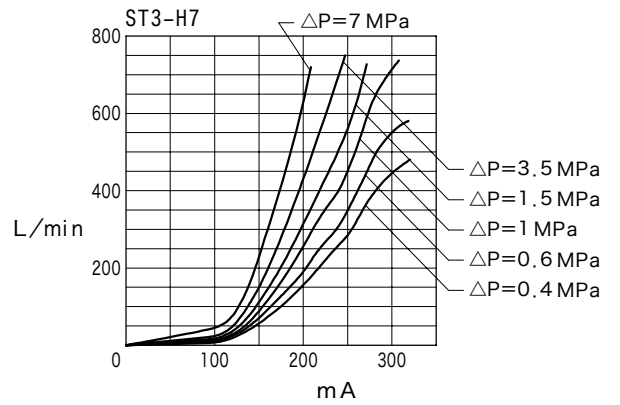
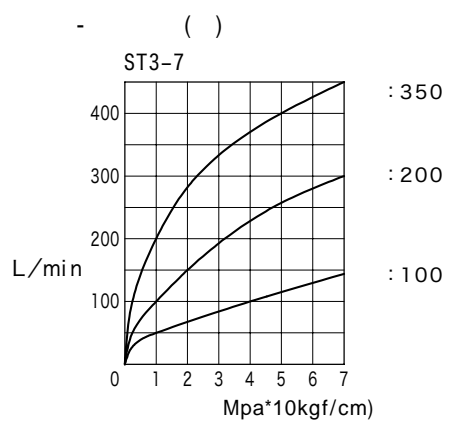
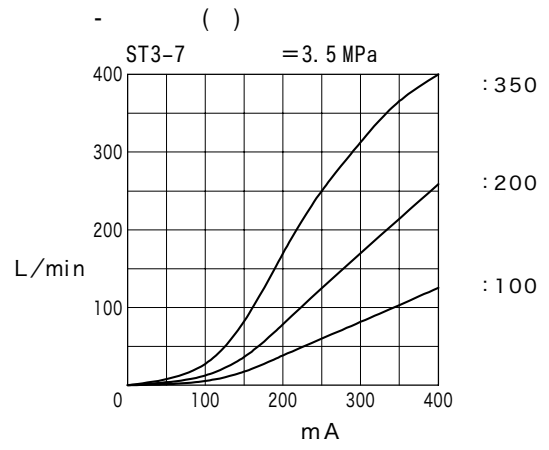
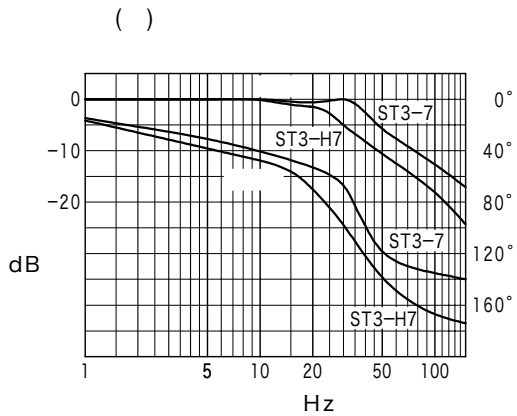
- 1 3
- 2 7: ISO 4401-07
H7: ISO 4401-07 W 가
- 3 ()
- 4 ()
- 5 ()
- 6 12: ST3-7
11: ST3-H7

J
38

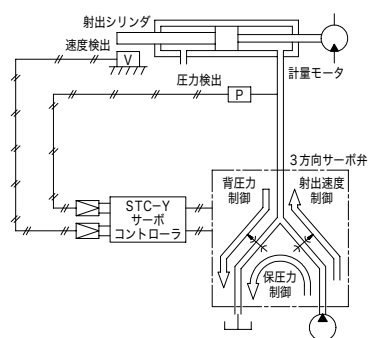
比例電磁式制御弁・サーボ弁

	ST3-7	ST3-H7
	20 MPa(Y)	0.1 MPa(1kgf/cm)
	(3.5 MPa(200kgf/cm)	(1 MPa(10kgf/cm)
	100 : 100 L/min(A)※	700 : 700 L/min
	200 : 200 L/min(B)※	
	350 : 350 L/min(B)※	
	0~20 MPa	
	10 : 10 L/min	20 : 20 L/min
	20 : 20 L/min	40 : 40 L/min
	5 ~ 7 MPa	7 MPa
(, 7 MPa)	3 L/min	5 L/min
	2 %	
	36 Hz(-3 dB)	25 Hz(-3 dB)
	0~60 °C (作動油温度)	
	32~68 mm ² /s (40 °C)	
	40 Ω (20 °C) ×2	
	-400~+400 mA ()	
D I T H E R	50~70 mA rms/ , 350 Hz	
	3.2 W(1.6 W/) , 20 °C	
()	P, A, B, T : 25 μm	
	X() : 10 μm	
	12.5 kg	21 kg

※ A 가 .
B A B 가 .
(ST3-H7 , A B 가 .



-
-
- Y () 0.1 MPa(1kgf/cm) .Y
-
- が 10 μm
-
- ST3-7 5~7 MPa(50~70kgf/cm)

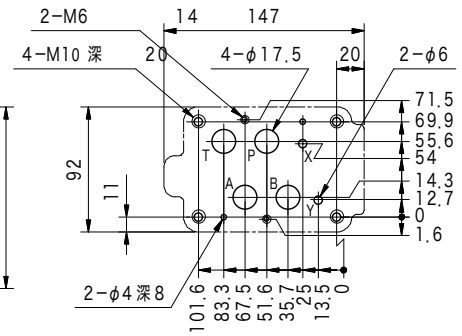
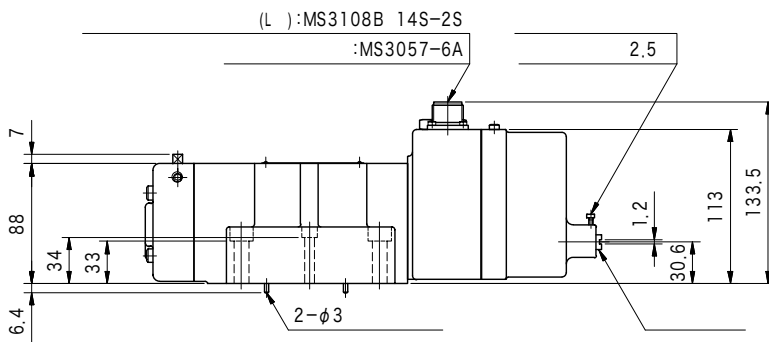
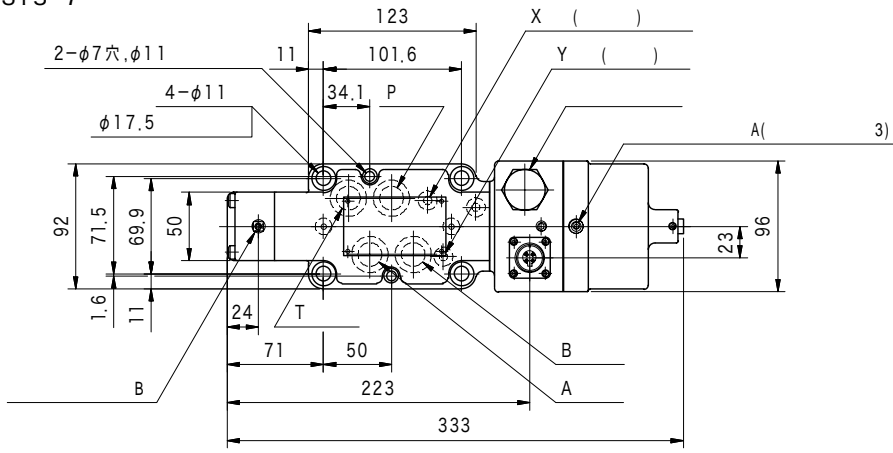


(2)

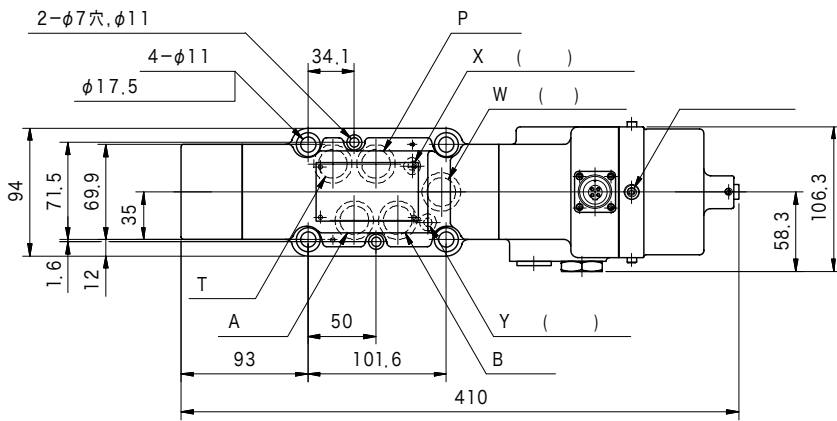
		(JIS B 1176 12.9)	
ST3-H7	M6×90	1/4-20UNC×88.9	2
	M10×95	3/8-16UNC×95.2	4
ST3-7	M6×45	1/4-20UNC×44.5	2
	M10×50	3/8-16UNC×50.8	4

M6, 1/4-20UNC : 12~15 N·m		
M10, 3/8-16UNC : 50~60 N·m		
	Rc	
ST3-7	DGSM-04-10-JA-M	1/2
	DGSM-04X-20-JA-M	3/4

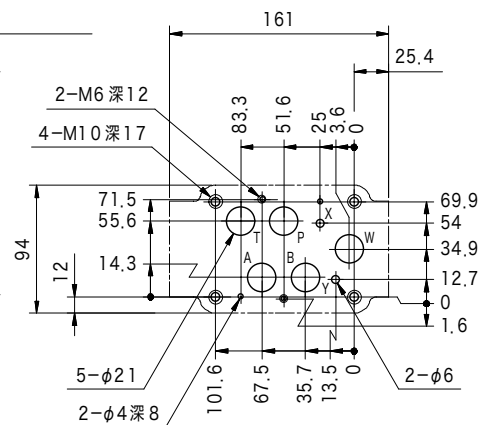
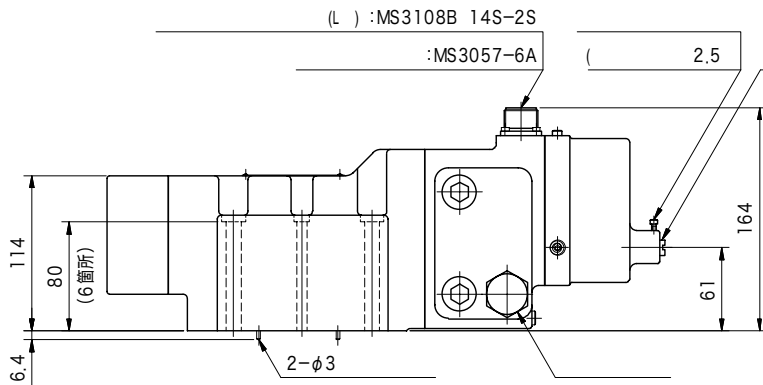
ST3-7

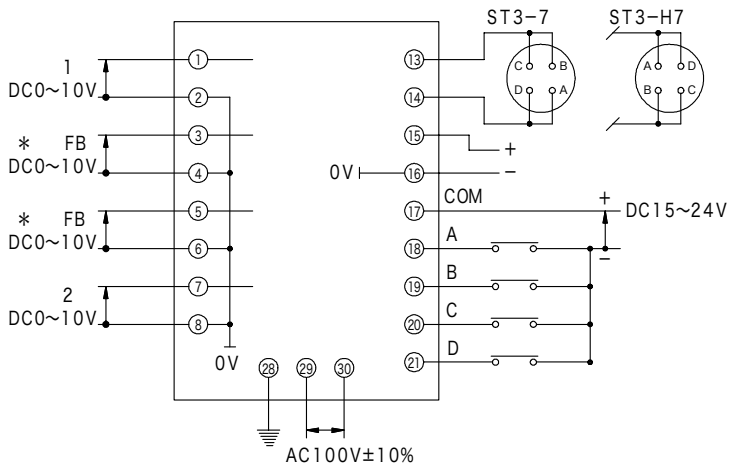


ST3-H7



(:VA27615
:VA27616)



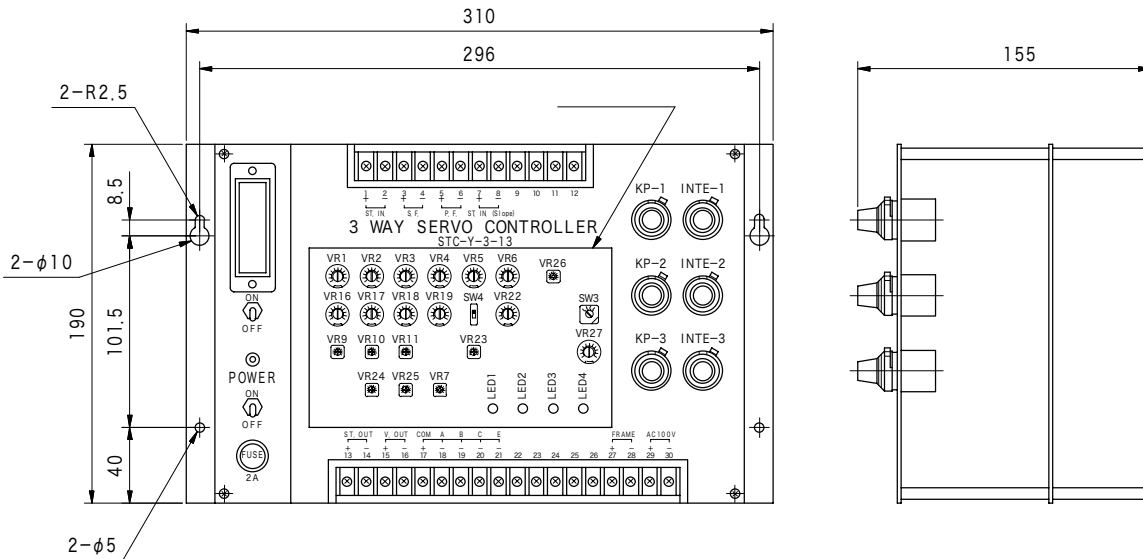


) 1 2
28 FRAME
*

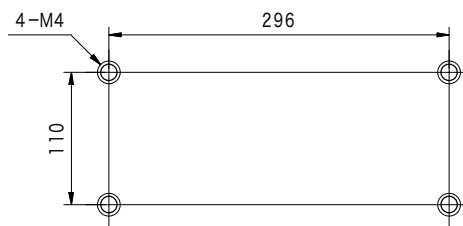
①-②	① : 1 ② : 1
③-④	③ : feed back ④ : feed back
⑤-⑥	⑤ : feed back ⑥ : feed back
⑦-⑧	⑦ : 2 ⑧ : 2
⑬-⑭	⑬ : ⑭ :
⑮-⑯	⑮ : ⑯ :
⑰	:
⑱	:
⑳	:
㉑	:

J
42

比例電磁式制御弁・サーボ弁



가



Schneider servo valves

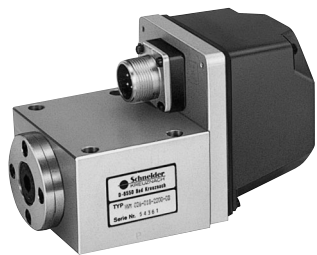
特長

- 가
 - 가
 - 가
 - 가
- , CETOP (ISO4401) , 3
 - 8mm 가

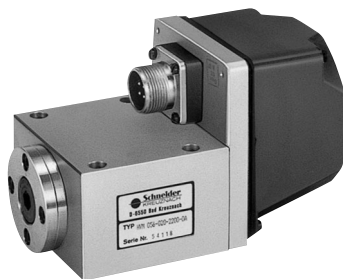
	MPa	L/min																			
		1	2	5	10	20	50	100	200	500	1000										
	HVM025/026/027-001	30	1 *1																		
	HVM025/026/027-003	30	2.5 *1																		
	HVM025/026/027-005	30	5 *1																		
	HVM025/026/027-010	5	10 *1																		
	HVM025/026/027-018	4	18 *1																		
	HVM061	31.5	5																		
2	HVM055/056/057	31.5								40											
	HVM062/063/064	31.5								40											
	HVM067	31.5								80											
	HVM090	30								60											
, feed back (LVDT)	HVM106	*2 42 *3 15								150											
	HVM107	*2 42 *3 15								250											
	HVM108	*2 42 *3 21								720											
P I D	HE218	—																			
	HE220	—																			
	HE241-6207	—																			
	HE236	—																			

*2 : *3 :

HVM025/026/027 (~18 L/min)



HVM055/056/057 (~40 L/min)



HVM061/062/063/064 (~40 L/min)



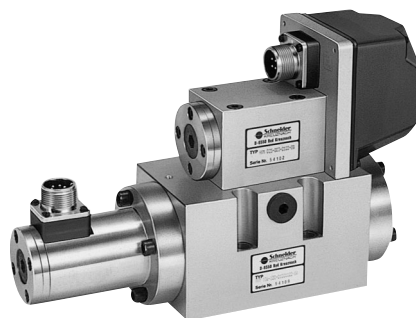
HVM067 (~80 L/min)



HVM090 (~60 L/min)



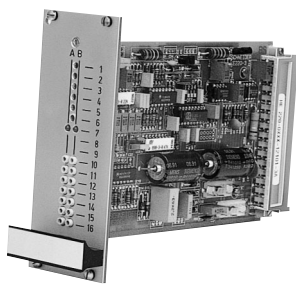
HVM106/107/108 (~720 L/min)



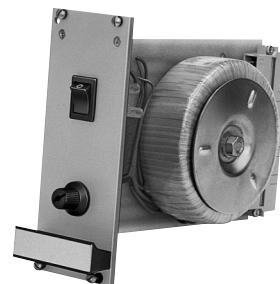
HE218 ()



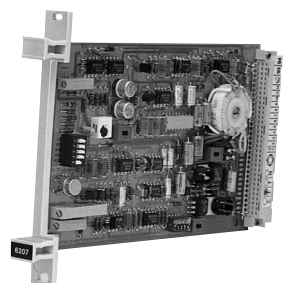
HE220 ()

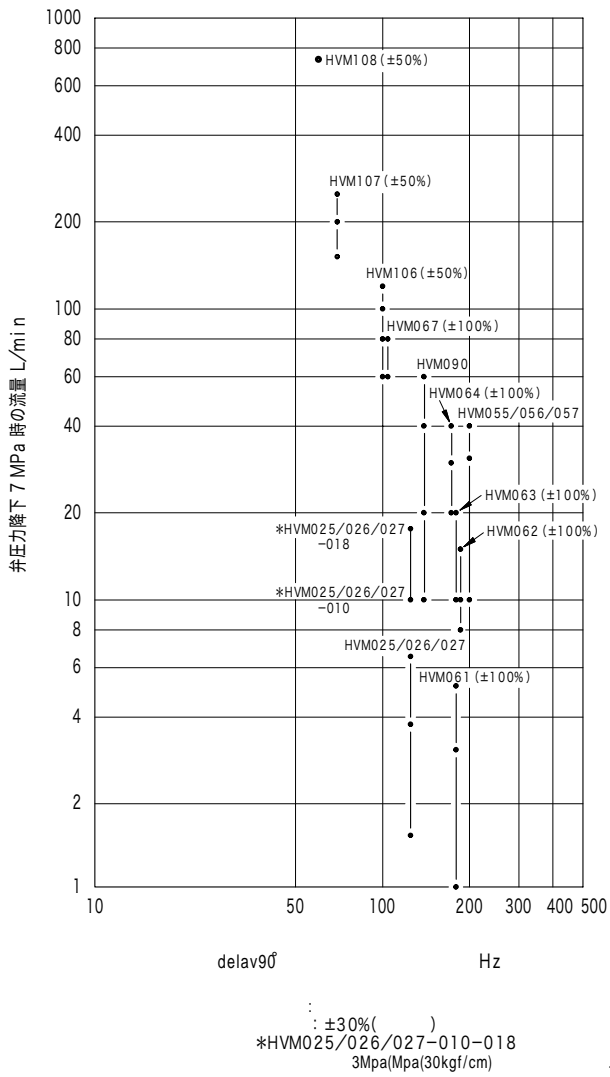


HE236 ()



HE241 ()





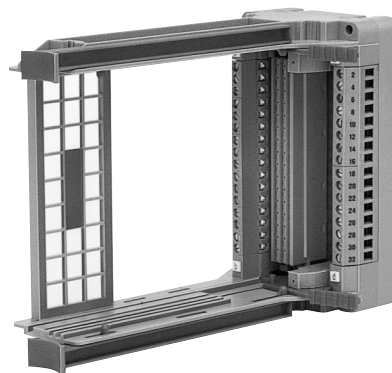
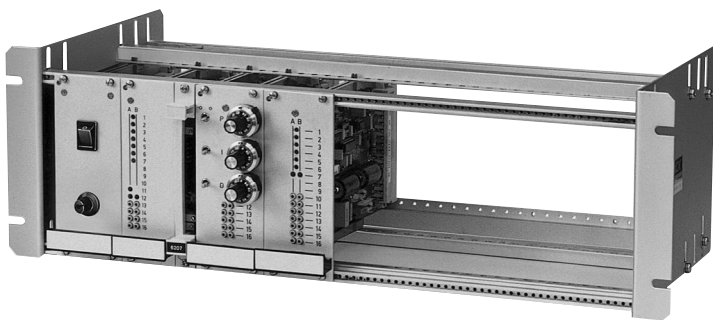
- 가
- 가
- : 1.6 μm Ra
- : 0.01
- ISO VG10~VG46
- 10~1000 mm²/s
- -20~+80 °C
- 10um()
- 0.1 Mpa(1 kgf/cm)
- 가 (R1/4,R1/8)
- feed back HVM 106, 107, 108, X Y
- (G*) ()

100mm×160mm

19

● 19 ()

●



「Cat. No. 968-2-J

J
45

比例電磁式制御弁・サーボ弁